

LIGHTING FIXTURE SCHEDULE										
TYPE	SYMBOL	DESCRIPTION	MANUFACTURER	CATALOG NO.	LAMPS	BALLAST		VOLTS	MOUNTING	
						TYPE	QTY			
A17		2'X2' RECESSED FLUORESCENT DIRECT / INDIRECT FIXTURE WITH STEEL HOUSING, STEEL REFLECTOR, ACRYLIC DIFFUSER, AND ELECTRONIC BALLAST.	FOCAL POINT OR APPROVED EQUAL	FAR-22-AC-2-BX25-E-VOLTS-G1-WH	(2) 25W BIAx	E	1	277	RECESSED	
A2		2'X4' RECESSED FLUORESCENT DIRECT / INDIRECT FIXTURE WITH STEEL HOUSING, STEEL REFLECTOR, ACRYLIC DIFFUSER, AND ELECTRONIC BALLAST.	FOCAL POINT OR APPROVED EQUAL	FAR-24-AC-2-T8-E-VOLTS-G1-WH	(2) 32W T8	E	1	277	RECESSED	
A3		2'X4' RECESSED FLUORESCENT DIRECT / INDIRECT FIXTURE WITH STEEL HOUSING, STEEL REFLECTOR, ACRYLIC DIFFUSER, AND ELECTRONIC BALLAST.	FOCAL POINT OR APPROVED EQUAL	FAR-24-AC-3-T8-E-VOLTS-G1-WH	(3) 32W T8	E	1	277	RECESSED	
B1		2'X2' RECESSED FLUORESCENT FIXTURE WITH STEEL HOUSING, ACRYLIC LENS, AND ELECTRONIC BALLAST.	HE WILLIAMS OR APPROVED EQUAL	50-G-S-22-2-25TT-S-A12125-EB2-UNV	(2) 25W TT	E	1	277	RECESSED	
B2		2'X4' RECESSED FLUORESCENT FIXTURE WITH STEEL HOUSING, ACRYLIC LENS, AND ELECTRONIC BALLAST.	HE WILLIAMS OR APPROVED EQUAL	50-G-S-24-2-32-S-A12125-EB2-UNV	(2) 32W T8	E	1	277	RECESSED	
B3		2'X2' RECESSED FLUORESCENT FIXTURE WITH STEEL HOUSING, ACRYLIC LENS, AND ELECTRONIC BALLAST.	HE WILLIAMS OR APPROVED EQUAL	50-G-S-22-2-25TT-S-A19156-EB2-UNV	(2) 25W TT	E	1	277	RECESSED	
B4		2'X4' RECESSED FLUORESCENT FIXTURE WITH STEEL HOUSING, ACRYLIC LENS, AND ELECTRONIC BALLAST.	HE WILLIAMS OR APPROVED EQUAL	50-G-S-24-2-32-S-A19156-EB2-UNV	(2) 32W T8	E	1	277	RECESSED	
B5		2'X4' RECESSED FLUORESCENT FIXTURE WITH STEEL HOUSING, ACRYLIC LENS, AND ELECTRONIC BALLAST.	HE WILLIAMS OR APPROVED EQUAL	50-G-S-24-3-32-S-A12125-EB2-UNV	(3) 32W T8	E	1	277	RECESSED	
C1		1'X4' PENDANT MOUNTED DIRECT / INDIRECT FLUORESCENT FIXTURE WITH STEEL HOUSING, FROSTED ACRYLIC DIFFUSER, AND ELECTRONIC BALLAST.	FOCAL POINT OR APPROVED EQUAL	FV4S-AC-2T8-1C-VOLTS-S-C24-WH-4 COORDINATE RUN LENGTHS WITH THE FLOORPLANS.	(2) 32W T8	E	1	277	PENDANT	
C2		1'X4' PENDANT MOUNTED DIRECT / INDIRECT FLUORESCENT FIXTURE WITH STEEL HOUSING, FROSTED ACRYLIC DIFFUSER, AND ELECTRONIC BALLAST.	FOCAL POINT OR APPROVED EQUAL	FV4S-AC-3T8-1C-VOLTS-S-C24-WH-4 COORDINATE RUN LENGTHS WITH THE FLOORPLANS.	(3) 32W T8	E	1	277	PENDANT	
C3		1'X4' PENDANT MOUNTED DIRECT / INDIRECT FLUORESCENT FIXTURE WITH STEEL HOUSING, FROSTED ACRYLIC DIFFUSER, AND ELECTRONIC BALLAST.	FOCAL POINT OR APPROVED EQUAL	FV4S-AC-DR1-3T8-1C-VOLTS-S-C48-WH-4 COORDINATE RUN LENGTHS WITH THE FLOORPLANS.	(3) 32W T8	E	1	277	PENDANT	
D1		1'X4' SURFACE MOUNTED FLUORESCENT FIXTURE WITH STEEL HOUSING, ACRYLIC WRAP AROUND LENS, AND ELECTRONIC BALLAST.	LSI INDUSTRIES OR APPROVED EQUAL	WNA10-2-32-SS010-PAF-UE	(2) 32W T8	E	1	277	PENDANT	
F1		4-1/2" RECESSED FLUORESCENT DOWNLIGHT WITH STEEL HOUSING, ALUMINUM REFLECTOR, CLEAR DIFFUSE TRIM, AND ELECTRONIC BALLAST.	FOCAL POINT OR APPROVED EQUAL	FC4D-26TT-S-VOLT-RO-T-D4-RD-DN-CD-NP	26W TT	E	1	277	RECESSED	
F2		6" RECESSED FLUORESCENT DOWNLIGHT WITH STEEL HOUSING, ALUMINUM REFLECTOR, CLEAR DIFFUSE TRIM, REGRESSED LENS, AND ELECTRONIC BALLAST.	FOCAL POINT OR APPROVED EQUAL	FC6D-26TT-S-VOLT-RO-T-D6-RD-RL-CD-NP	26W TT	E	1	277	RECESSED	
F3		8" WET LOCATION RATED RECESSED FLUORESCENT DOWNLIGHT WITH STEEL HOUSING, ALZAK REFLECTOR, REGRESSED PRISMATIC ACRYLIC LENS, AND ELECTRONIC BALLAST.	PEACHTREE LIGHTING OR APPROVED EQUAL	PFFX-8126-WRPA-ST	26W TT	E	1	277	RECESSED	
F4		7" WET LOCATION RATED RECESSED FLUORESCENT DOWNLIGHT WITH STEEL HOUSING, ALZAK REFLECTOR, REGRESSED PRISMATIC ACRYLIC LENS, AND ELECTRONIC BALLAST.	PEACHTREE LIGHTING OR APPROVED EQUAL	PFFX-7126-RPA	26W TT	E	1	277	RECESSED	
F5		7" WET LOCATION RATED RECESSED FLUORESCENT DOWNLIGHT WITH STEEL HOUSING, ALZAK REFLECTOR, REGRESSED PRISMATIC ACRYLIC LENS, AND ELECTRONIC BALLAST.	PEACHTREE LIGHTING OR APPROVED EQUAL	PFTX-7132-RPA	32W TT	E	1	277	RECESSED	
G1		22" PENDANT MOUNTED FLUORESCENT HIGHBAY FIXTURE WITH ALUMINUM HOUSING, ACRYLIC REFRACTOR, FLAT PRISMATIC LENS, FULL WIRE CAGE, AND ELECTRONIC BALLAST.	A-STAR LIGHTING OR APPROVED EQUAL	HSV22-8-42-U-AR-COLOR-FL22-FWG22-# # - DENOTES CUSTOM LENGTH STEM MOUNT. COORDINATE LENGTH IN FIELD.	(8) 42W TTT	E	4	277	PENDANT	
G2		16" PENDANT MOUNTED FLUORESCENT HIGHBAY FIXTURE WITH ALUMINUM HOUSING, ACRYLIC REFRACTOR, FLAT PRISMATIC LENS, WIRE GUARD, AND ELECTRONIC BALLAST.	A-STAR LIGHTING OR APPROVED EQUAL	LSV16-4-42-U-AR-COLOR-FL16-WG16-# # - DENOTES CUSTOM LENGTH STEM MOUNT. COORDINATE LENGTH IN FIELD.	(4) 42W TTT	E	2	277	PENDANT	
H1		4'-0" PENDANT MOUNTED FLUORESCENT FIXTURE WITH HIGH IMPACT HOUSING, GASKETED POLYCARBONATE LENS, AND ELECTRONIC BALLAST. COORDINATE PENDANT LENGTH IN THE FIELD.	LSI INDUSTRIES OR APPROVED EQUAL	EG3-2-32-SS010-UE	(2) 32W T8	E	1	277	PENDANT	
J1		2'X2' RECESSED FLUORESCENT FIXTURE WITH ONE PIECE STEEL HOUSING, GASKETED ACRYLIC LENS, AND ELECTRONIC BALLAST. WET LOCATION RATED, IP55, 85 PSI.	KURTZON LIGHTING OR APPROVED EQUAL	WL-G-1-2X2-2-BX25-UNV-HD85	(2) 25W BIAx	E	1	277	RECESSED	
K1		33" PENDANT MOUNTED FLUORESCENT DOME FIXTURE WITH STEEL HOUSING, STEEL REFLECTOR, CONVEX LENS, AND ELECTRONIC BALLAST.	FOCAL POINT OR APPROVED EQUAL	FSD-33-D-3T8U6-S-VOLT-S24-CX-WH	(3) 32W T8 U6	E	1	277	PENDANT	
L1		PENDANT MOUNTED FLUORESCENT FIXTURE WITH ALUMINUM HOUSING, ACRYLIC DIFFUSER, EDGE-LIT TRIM, AND ELECTRONIC BALLAST. COORDINATE STEM LENGTH WITH ARCHITECTURAL DRAWINGS.	VISA LIGHTING OR APPROVED EQUAL	AIR FOIL CP5300-2S54-CMB-FINISH-STM-MWAC	(2) 54W TSHO	E	1	277	PENDANT	
L2		PENDANT MOUNTED FLUORESCENT FIXTURE WITH ACRYLIC CYLINDER BODY AND ELECTRONIC BALLAST. COORDINATE STEM LENGTH WITH ARCHITECTURAL DRAWINGS.	VISA LIGHTING OR APPROVED EQUAL	SEQUENCE CP5404-1FS39-CMB-FINISH-STM-MWAC	39W TSHO	E	1	277	PENDANT	

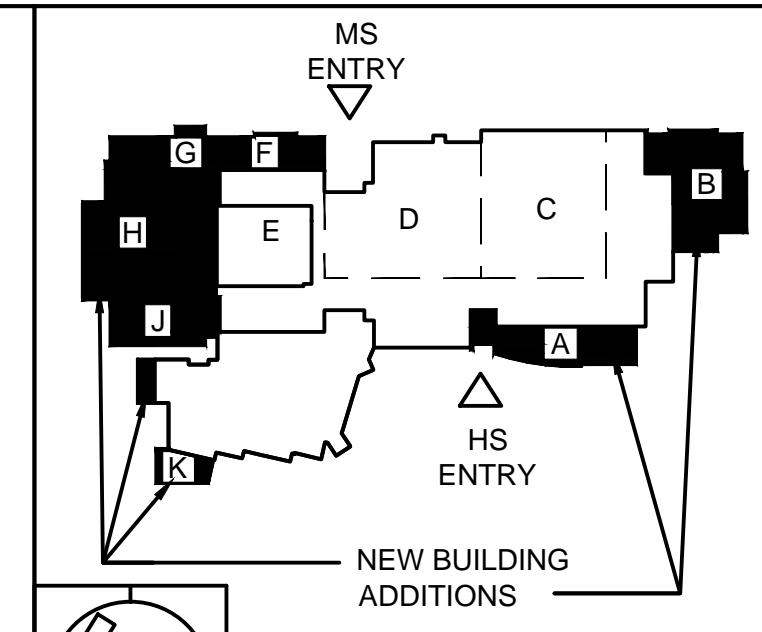
LIGHTING FIXTURE SCHEDULE										
TYPE	SYMBOL	DESCRIPTION	MANUFACTURER	CATALOG NO.	LAMPS	BALLAST		VOLTS	MOUNTING	
						TYPE	QTY			
M1		SINGLE ARM WALL MOUNTED FLUORESCENT FIXTURE WITH ALUMINUM HOUSING, ACRYLIC DIFFUSER, EDGE-LIT TRIM, AND ELECTRONIC BALLAST.	VISA LIGHTING OR APPROVED EQUAL	AIR FOIL CB5300-2FS28-FINISH-MWAC	(2) 28W TSHO	E	1	277	WALL	
M1		4'-0" PENDANT MOUNTED FLUORESCENT FIXTURE WITH MARINE GRADE ALUMINUM HOUSING, GASKETED POLYCARBONATE LENS, AND ELECTRONIC BALLAST.	LUMINAIRE LIGHTING OR APPROVED EQUAL	VPF-8-4-2F32T8-277-OP-COLOR-JB-STEM	(2) 32W T8	E	1	277	PENDANT	
P1		FLUORESCENT UNDER CABINET FIXTURE WITH STEEL HOUSING, ACRYLIC LENS, AND ELECTRONIC BALLAST.	HE WILLIAMS OR APPROVED EQUAL	2 FEET: 1SF-24-14TSS-A12125-WRS-EB2-120 3 FEET: 1SF-36-21TSS-A12125-WRS-EB2-120 4 FEET: 1SF-48-28TSS-A12125-WRS-EB2-120 * COORDINATE LENGTH IN FIELD.	2 FEET: (2) 14W T5 3 FEET: (2) 21W T5 4 FEET: (2) 28W T5	E	1	120	SURFACE	
D1		WALL MOUNTED FLUORESCENT FIXTURE WITH MARINE GRADE ALUMINUM HOUSING, POLYCARBONATE LENS, AND TWO ELECTRONIC BALLAST.	LUMINAIRE LIGHTING OR APPROVED EQUAL	AEL-48-2F24T5HO-277-CP-COLOR- (2) NORMAL BALLASTS - EMB600R REMOTE EM	(2) 24W T5HO	E	1	277	WALL	
D2		WALL MOUNTED FLUORESCENT FIXTURE WITH MARINE GRADE ALUMINUM HOUSING, POLYCARBONATE LENS, AND TWO ELECTRONIC BALLAST.	LUMINAIRE LIGHTING OR APPROVED EQUAL	AEL-72-2F39T5HO-277-CP-COLOR- (2) NORMAL BALLASTS - EMB600R REMOTE EM	(2) 39W T5HO	E	1	277	WALL	
D3		WELL LOCATION RATED WALL MOUNTED LED FIXTURE WITH DIE CAST ALUMINUM HOUSING AND GRILL, FROSTED DIFFUSER, GASKET, AND LED DRIVER.	PERFORMANCE IN LIGHTING OR APPROVED EQUAL	NIKKO + 45/G LED 079666	LED	L	1	277	WALL	
D4		WALL MOUNTED FLUORESCENT FIXTURE WITH EXTRUDED ALUMINUM HOUSING, TEMPERED GLASS DIFFUSER, GASKET, AND ELECTRONIC BALLAST.	PERFORMANCE IN LIGHTING OR APPROVED EQUAL	DILUME 300X230-M 074568	(1) 57W TT	E	1	277	WALL	
D5		WALL MOUNTED FLUORESCENT FIXTURE WITH EXTRUDED ALUMINUM HOUSING, TEMPERED GLASS DIFFUSER, GASKET, AND ELECTRONIC BALLAST.	PERFORMANCE IN LIGHTING OR APPROVED EQUAL	DILUME 500X500-B/C/C 074653	(2) 150W MH	E	1	277	WALL	
R		SURFACE MOUNTED SINGLE CIRCUIT TRACK, INCANDESCENT TRACK HEADS, AND 5 AMP CURRENT LIMITER. PROVIDE ALL REQUIRED JOINERS, ADAPTERS AND CONNECTORS. COORDINATE LENGTH OF TRACK IN THE FIELD.		TRACK: 31310 (4 FEET) 31320 (8 FEET) 31330 (12 FEET) HANGERS: 30652 END FEED: 31340 CURRENT LIMITER: TCL5W HEAD: 238-00-FD-W						
S1	REFER TO THE CIVIL ENGINEERS DWGS FOR ADDITIONAL INFORMATION.									
S2	REFER TO THE CIVIL ENGINEERS DWGS FOR ADDITIONAL INFORMATION.									
S3	REFER TO THE CIVIL ENGINEERS DWGS FOR ADDITIONAL INFORMATION.									
X		LED EXIT LIGHT WITH THERMOPLASTIC HOUSING, RED LETTERS, SELF DIAGNOSTICS, AND NICKEL-CADMIUM BATTERY. COORDINATE COLOR WITH THE ARCHITECT. COORDINATE NUMBER OF FACES, CHEVRONS, AND MOUNTING TYPE WITH THE PLANS.	EVENLITE OR APPROVED EQUAL	TLX-EM-RU-W-SD PROVIDE M990010 WIRE GUARD IN GYMS	LED	L	1	277	WALL / CEILING	
Y1		EMERGENCY LIGHT WITH THERMOPLASTIC HOUSING, TWO ADJUSTABLE HEADS, SELF DIAGNOSTICS, AND NICKEL-CADMIUM BATTERY. BATTERY SHALL BE CAPABLE OF OPERATING FIXTURE FOR 90 MINS.	EVENLITE OR APPROVED EQUAL	TEB2-6V-W-SD	(2) 12W HALOGEN	-	1	277	WALL	

- NOTES:
- VERIFY ALL CEILING TYPES PRIOR TO ORDERING FIXTURES
 - VERIFY ALL OPERATING VOLTAGES PRIOR TO ORDERING FIXTURES.
 - COORDINATE THE HEIGHT OF ALL SUSPENDED FIXTURES WITH THE OWNER, ARCHITECT, AND ENGINEER PRIOR TO INSTALLATION.
 - ALL LAMPS SHALL HAVE A COLOR TEMPERATURE OF 3500°K AND A CRI OF 85, UNLESS NOTED OTHERWISE.

- BALLAST TYPES:
- CW COLD WEATHER
 - DL DIMMING (LUTRON)
 - DMX DIMMING (MARK 10)
 - E ELECTRONIC
 - EM ELECTROMAGNETIC
 - HPF HIGH POWER FACTOR
 - L LED DRIVER

BASE BID: FIXTURES DESIGNATED WITH A "1/2 SHADE" OR "FULL SHADE" AND ALL EXIT SIGNS SHALL HAVE AN EMERGENCY BATTERY BALLAST, UNLESS SPECIFICALLY NOTED OTHERWISE. BATTERY SHALL BE ABLE TO OPERATE LINEAR FLUORESCENT LAMPS (MINIMUM 1300 LUMENS), COMPACT FLUORESCENT LAMP (MINIMUM 600 LUMENS), OR ENTIRE LED FIXTURE FOR MINIMUM 90 MINS.

ADD ALTERNATE #4: FIXTURES DESIGNATED WITH A "1/2 SHADE" OR "FULL SHADE" AND ALL EXIT SIGNS SHALL BE WIRED TO AN EMERGENCY PANELBOARD FED FROM THE GENERATOR, UNLESS SPECIFICALLY NOTED OTHERWISE.



di cara rubino architects
 30 galesi drive
 wayne, nj 07470
 tel 973.256.0202 | fax 973.256.0227

MEMBERS OF THE AMERICAN INSTITUTE OF ARCHITECTS

GERMANO RUBINO, AIA NJ # AI 08084
 JOSEPH DI CARA, AIA NJ # AI 08265

NOT VALID FOR BUILDING UNLESS SIGNED AND SEALED BY ARCHITECT

X Board President of Schools,
 X Superintendent of Schools,

FRENCH & PARRELLO
 ASSOCIATES, PA, CONSULTING ENGINEERS

1800 Route 34, Suite 101 • Wall, NJ • 07719 • 732 312-9800

AMIN H. GOMAA, PE
 PROFESSIONAL ENGINEER, NJ LIC. NO. 24Ge04842100

BUILDING ADDITION AND INTERIOR RENOVATIONS AT :
SECAUCUS MIDDLE HIGH SCHOOL
 11 MILL RIDGE ROAD
 SECAUCUS, NJ 07094

SECAUCUS BOARD OF EDUCATION

ELECTRICAL LIGHT FIXTURE SCHEDULE

REV.	DATE:	DRN	CHK	
	9/2/14	GS	AHG	PROGRESS SET FOR CM
	9/22/14	GS	AHG	80% CODE REVIEW
	11/5/14	GS	AHG	CODE REVIEW
	1/5/15	GS	AHG	BID SET

STATE PROJECT NO.
4730-050-13-1000

PROJECT NO. **2718** SHEET NO. **E1.2**