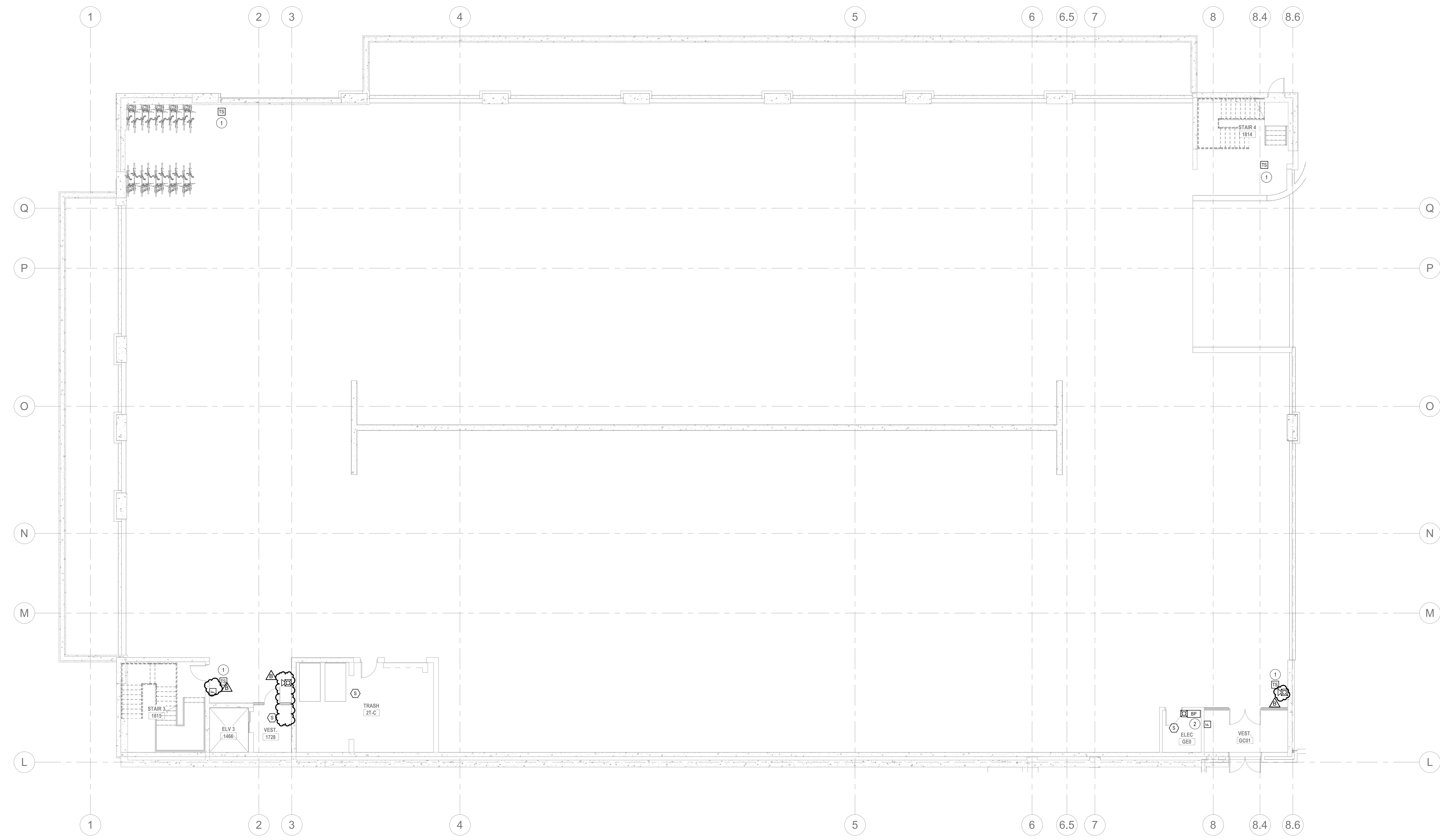


**** NOTE ****

THESE FIRE ALARM DRAWINGS ARE PERFORMANCE SPECIFICATION ONLY. CONTRACTOR SHALL PROVIDE A COMPLETE SYSTEM DESIGN IN COMPLIANCE WITH NFPA 72, THE IBC, NFPA 101, AND ANY OTHER ENFORCED CODES AND AMENDMENTS, INCLUDING ENGINEERED SIGNED AND SEALED DRAWINGS, POINT TO POINT WIRING WITH PROPOSED CIRCUITING OR CONDUIT ROUTING, ALL APPLICABLE CALCULATIONS, DEVICE MANUFACTURERS AND QUANTITIES, WIRING DIAGRAMS, AND SHOP SUBMITTALS. CONTRACTOR SHALL BE RESPONSIBLE FOR ALL ASSOCIATED PERMITS, INSPECTIONS, AND TESTING. CONSULT LOCAL BUILDING AUTHORITY AND FIRE MARSHAL REGARDING LOCAL AREA'S REQUIREMENTS.

- FIRE ALARM GENERAL NOTES**
- REFER TO SHEETS QFA0.01 FOR NOTES, SYMBOLS AND ABBREVIATIONS.
 - EG SHALL REFER TO TELECOM, SECURITY & AV DRAWINGS, DETAILS FOR FINAL DEVICE LOCATIONS & RACEWAY REQUIREMENTS.
 - REFER TO MECHANICAL PLANS FOR DUCT SMOKE DETECTOR AND FIRE SMOKE DAMPER LOCATIONS. PROVIDE FA CONNECTION AND WIRE AS REQUIRED.
 - REFER TO FIRE PROTECTION PLANS FOR TAMPER AND FLOW SWITCH LOCATIONS. PROVIDE FA CONNECTION AND WIRE AS REQUIRED.
 - PROVIDE AREA SMOKE DETECTORS IN ELEVATORS LOBBIES AND ELEVATOR MACHINE ROOM(S). SMOKE DETECTORS SHALL BE LOCATED ON THE CEILING WITHIN 21 FEET OF THE CENTERLINE OF EACH ELEVATOR DOOR WITHIN THE ELEVATOR BANK UNDER CONTROL OF THE DETECTOR FOR ELEVATOR LOBBIES UP TO 15 FEET IN HEIGHT WITH FLAT AND SMOOTH CEILINGS. FOR HIGHER AND UNEVEN CEILINGS, ADDITIONAL SMOKE DETECTORS MAY BE REQUIRED.
 - MANUAL FIRE ALARM BOXES SHALL BE LOCATED WITHIN 5 FEET OF EACH EXIT DOORWAY ON EACH FLOOR.
 - DUCT SMOKE DETECTORS AND DUCT SMOKE DETECTORS TEST STATIONS LOCATIONS TO BE COORDINATED WITH THE MECHANICAL DRAWINGS.
 - PROVIDE AND INSTALL SYSTEM FIRE ALARM ADDRESSABLE DUCT SMOKE DETECTORS AS INDICATED ON THE MECHANICAL FLOOR PLANS AND RISERS FOR FIRE SMOKE DAMPERS AND SMOKE DAMPERS. PROVIDE ADDRESSABLE CONTROL RELAY AT EACH DAMPER.
 - PROVIDE 120V EMERGENCY POWER TO ALL FIRE/SMOKE AND SMOKE DAMPERS INDICATED ON THE MECHANICAL DRAWINGS.

- FIRE ALARM SHEET NOTES**
- COORDINATE FINAL LOCATION AND QUANTITIES TAMPER AND FLOW SWITCHES WITH THE FIRE PROTECTION DRAWINGS AND THE SPRINKLER CONTRACTOR.



1 FIRE ALARM - PARKING LEVEL 0 (CLUB LEVEL) FLOOR PLAN
 18" = 1'-0"

ALL REPORTS, PLANS, SPECIFICATIONS AND COMPUTER FILES RELATING TO THIS PROJECT ARE THE PROPERTY OF THE MARTIN ARCHITECTURAL GROUP. REPRODUCTION OF ANY COMMON LAW, STATUTE AND OTHER RESERVED RIGHTS INCLUDING THE COPYRIGHT RIGHT THEREIN OR SUBSTANTIAL USE WITHOUT WRITTEN PERMISSION OF THE MARTIN ARCHITECTURAL GROUP WILL VIOLATE THE COPYRIGHT LAWS OF THE UNITED STATES AND WILL BE SUBJECT TO LEGAL PROSECUTION.
 © The Martin Architectural Group, P.C.



THE MARTIN ARCHITECTURAL GROUP, P.C.
 ARCHITECTS AND LAND PLANNERS
 A PROFESSIONAL CORPORATION
 240 NORTH 22ND STREET, PHILADELPHIA, PA, 19103
 P (215) 665-1060 F (215) 561-5064

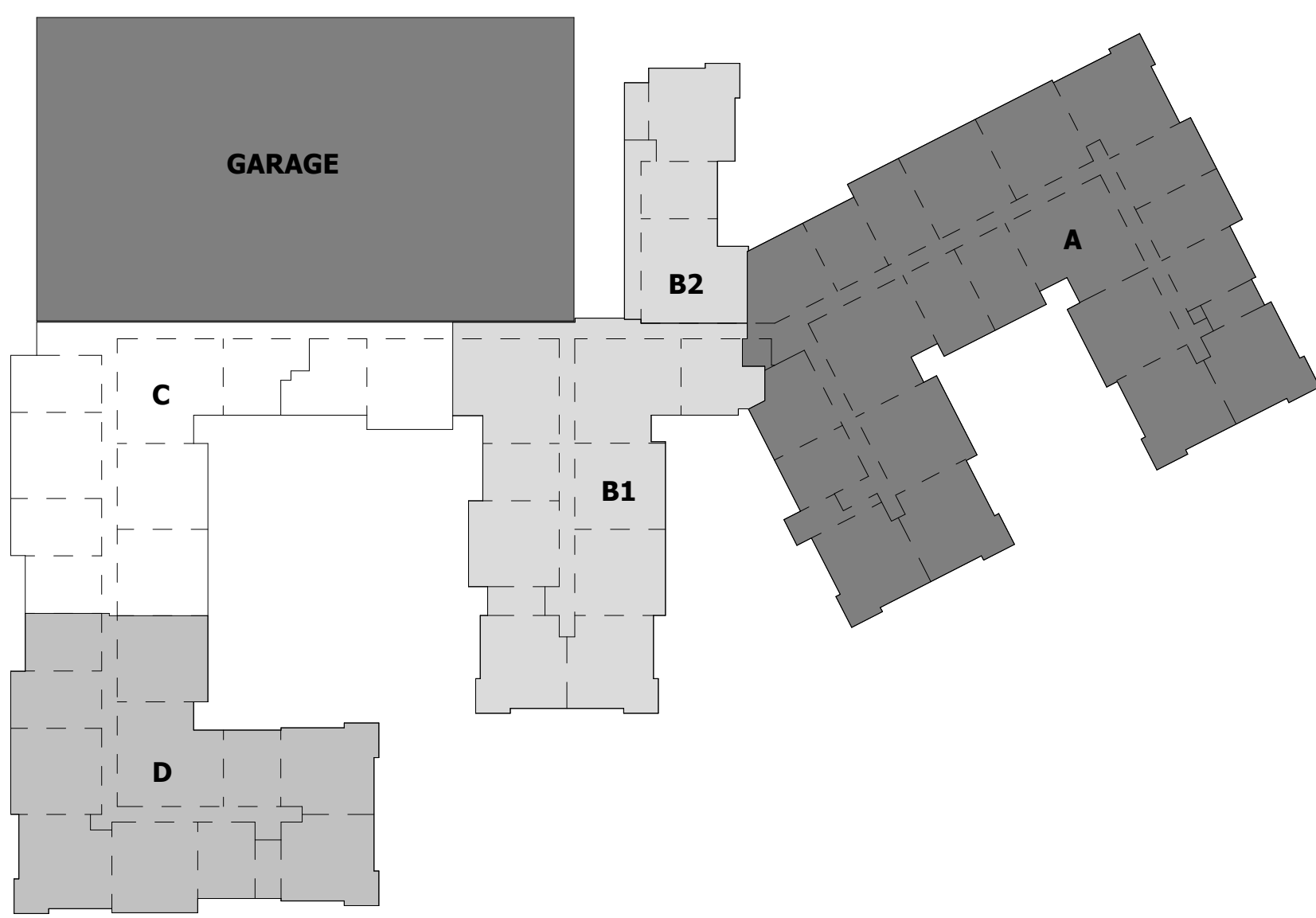
P.A.: JTG
 P.M.: TRT
 DRAWN BY: NIP
 PROJECT NO: 1022747

NO.	REVISION	DATE
1	PERMIT SET	12/17/22
2	PERMIT COMMENTS	12/22/22

Project Status

FIRE ALARM - PARKING LEVEL 0 (CLUB LEVEL) FLOOR PLAN
Granite Run Apartments
 MIDDLETOWN TOWNSHIP, PA

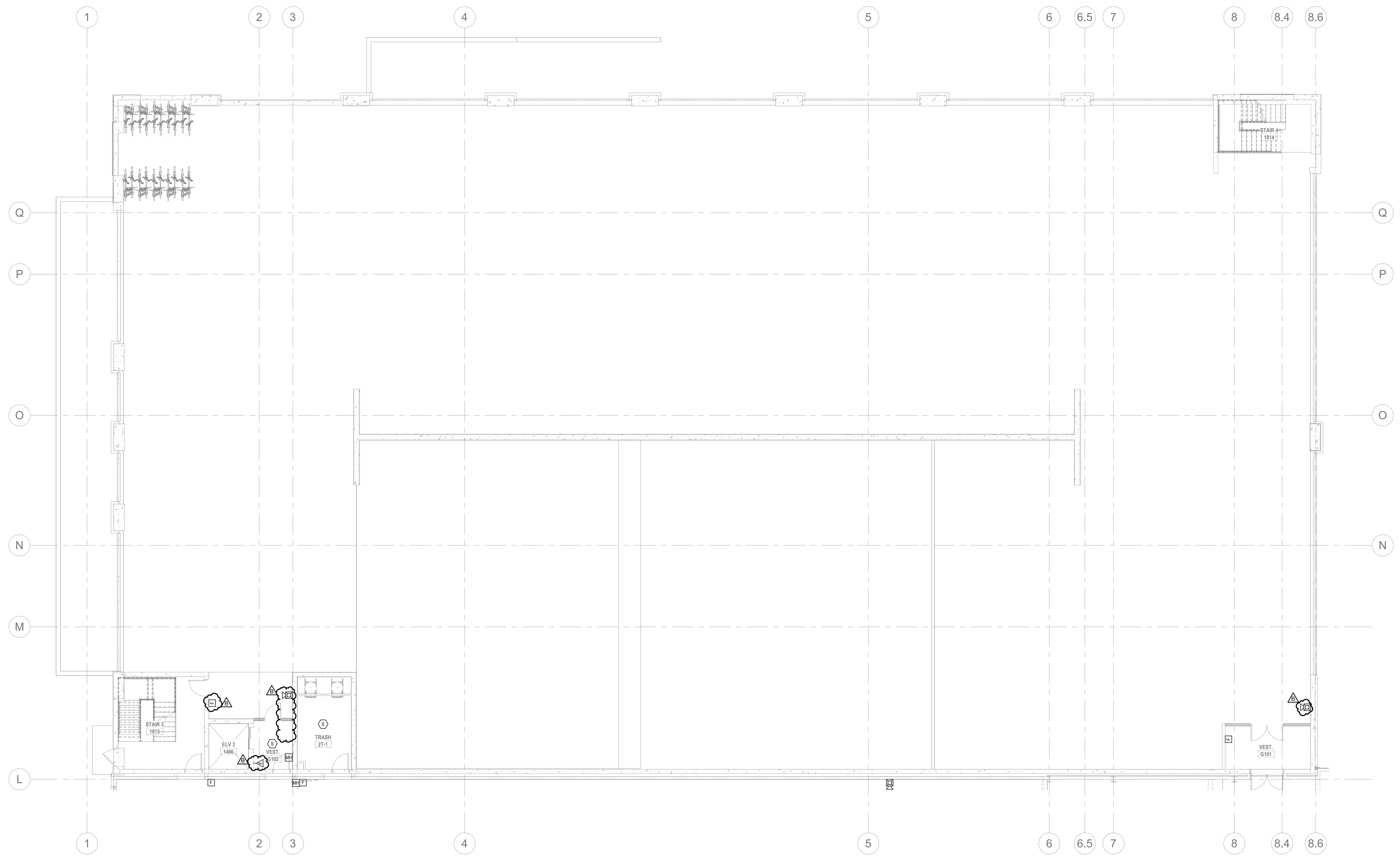
SCALE: AS INDICATED
 DATE: 11/01/22



**** NOTE ****

THESE FIRE ALARM DRAWINGS ARE PERFORMANCE SPECIFICATION ONLY. CONTRACTOR SHALL PROVIDE A COMPLETE SYSTEM DESIGN IN COMPLIANCE WITH NFPA 72, THE IBC, NFPA 101, AND ANY OTHER ENFORCED CODES AND AMENDMENTS, INCLUDING ENGINEERED SIGNED AND SEALED DRAWINGS, POINT TO POINT WIRING WITH PROPOSED CIRCUITING OR CONDUIT ROUTING, ALL APPLICABLE CALCULATIONS, DEVICE MANUFACTURERS AND QUANTITIES, WIRING DIAGRAMS, AND SHOP SUBMITTALS. CONTRACTOR SHALL BE RESPONSIBLE FOR ALL ASSOCIATED PERMITS, INSPECTIONS, AND TESTING. CONSULT LOCAL BUILDING AUTHORITY AND FIRE MARSHAL REGARDING LOCAL AREA'S REQUIREMENTS.

- FIRE ALARM GENERAL NOTES**
1. REFER TO SHEETS QFA0.01 FOR NOTES, SYMBOLS AND ABBREVIATIONS.
 2. EC SHALL REFER TO TELECOM, SECURITY & AV DRAWINGS, DETAILS FOR FINAL DEVICE LOCATIONS & RACEWAY REQUIREMENTS.
 3. REFER TO MECHANICAL PLANS FOR DUCT SMOKE DETECTOR AND FIRE SMOKE DAMPER LOCATIONS. PROVIDE FA CONNECTION AND WIRE AS REQUIRED.
 4. REFER TO FIRE PROTECTION PLANS FOR TAMPER AND FLOW SWITCH LOCATIONS. PROVIDE FA CONNECTION AND WIRE AS REQUIRED.
 5. PROVIDE AREA SMOKE DETECTORS IN ELEVATORS LOBBIES AND ELEVATOR MACHINE ROOM(S). SMOKE DETECTORS SHALL BE LOCATED ON THE CEILING WITHIN 21 FEET OF THE CENTERLINE OF EACH ELEVATOR DOOR WITHIN THE ELEVATOR BANK UNDER CONTROL OF THE DETECTOR FOR ELEVATOR LOBBIES UP TO 15 FEET IN HEIGHT WITH FLAT AND SMOOTH CEILINGS. FOR HIGHER AND UNEVEN CEILINGS, ADDITIONAL SMOKE DETECTORS MAY BE REQUIRED.
 6. MANUAL FIRE ALARM BOXES SHALL BE LOCATED WITHIN 5 FEET OF EACH EXIT DOORWAY ON EACH FLOOR.
 7. DUCT SMOKE DETECTORS AND DUCT SMOKE DETECTORS TEST STATIONS LOCATIONS TO BE COORDINATED WITH THE MECHANICAL DRAWINGS.
 8. PROVIDE AND INSTALL SYSTEM FIRE ALARM ADDRESSABLE DUCT SMOKE DETECTORS AS INDICATED ON THE MECHANICAL FLOOR PLANS AND RISERS FOR FIRE SMOKE DAMPERS AND SMOKE DAMPERS. PROVIDE ADDRESSABLE CONTROL RELAY AT EACH DAMPER.
 9. PROVIDE 120V EMERGENCY POWER TO ALL FIRE/SMOKE AND SMOKE DAMPERS INDICATED ON THE MECHANICAL DRAWINGS.



1 FIRE ALARM - PARKING LEVEL 1 FLOOR PLAN
1/8" = 1'-0"

ALL REPORTS, PLANS, SPECIFICATIONS AND COMPUTER FILES RELATING TO THIS PROJECT ARE THE PROPERTY OF THE MARTIN ARCHITECTURAL GROUP. THE MARTIN ARCHITECTURAL GROUP RESERVES ALL COMMON LAW, STATUTE AND OTHER RESERVED RIGHTS INCLUDING THE COPY RIGHT THEREIN. REPRODUCTION OF THE MATERIAL HEREIN OR SUBSTANTIAL USE WITHOUT WRITTEN PERMISSION OF THE MARTIN ARCHITECTURAL GROUP VIOLATES THE COPYRIGHT LAWS OF THE UNITED STATES AND WILL BE SUBJECT TO LEGAL PROSECUTION.
© The Martin Architectural Group, P.C.



THE MARTIN ARCHITECTURAL GROUP, P.C.
ARCHITECTS AND LAND PLANNERS
A PROFESSIONAL CORPORATION
240 NORTH 22ND STREET, PHILADELPHIA, PA, 19103
P (215) 665-1066 F (215) 561-5064

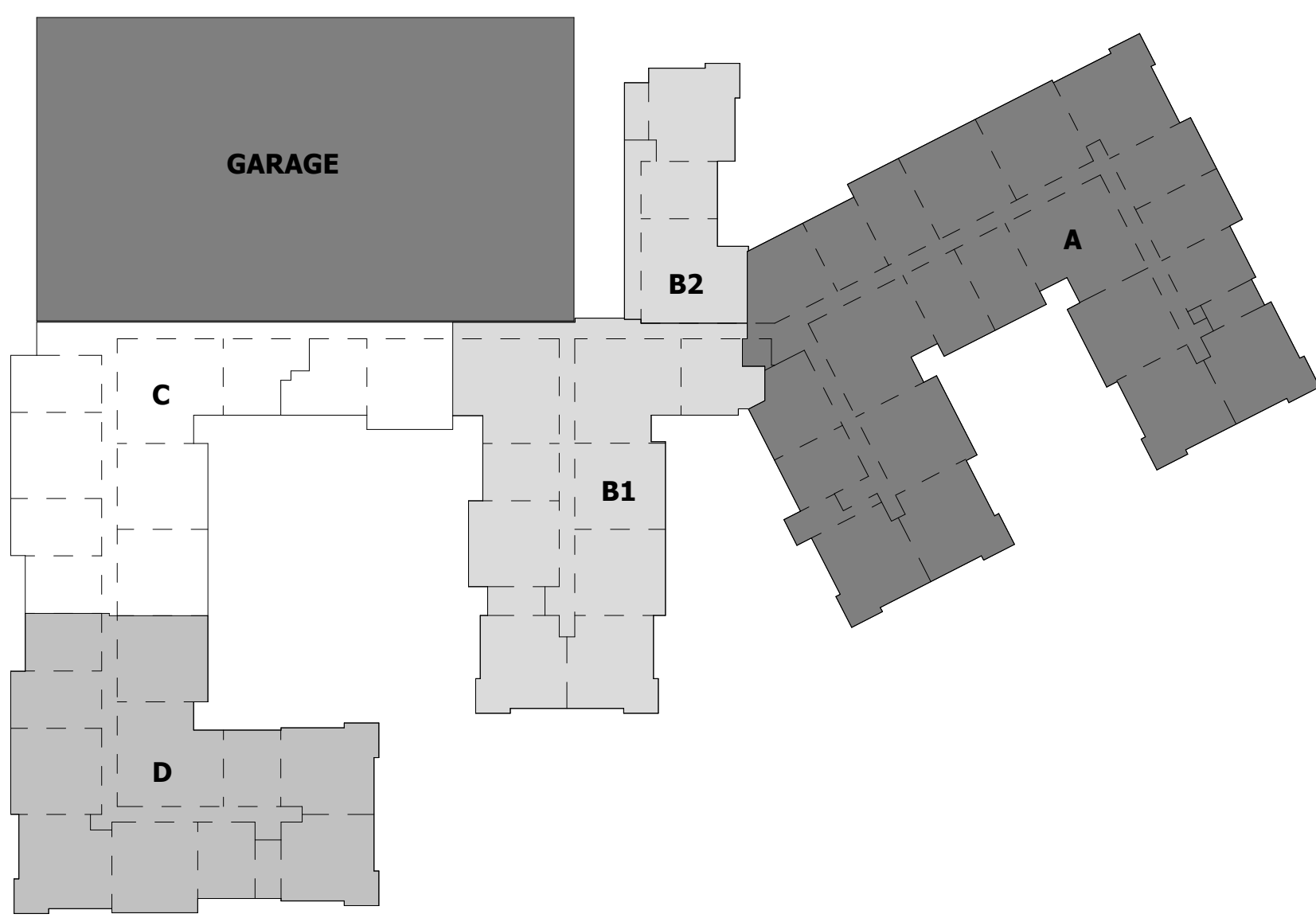
P.A.: JTG
P.M.: TRT
DRAWN BY: NIP
PROJECT NO: 1022747

NO.	REVISION	DATE
1	ISSUE FOR PERMIT SET	12/17/2022
2	PERMIT COMMENTS	12/21/22

Project Status

FIRE ALARM - PARKING LEVEL 1 FLOOR PLAN
Granite Run Apartments
MIDDLETOWN TOWNSHIP, PA

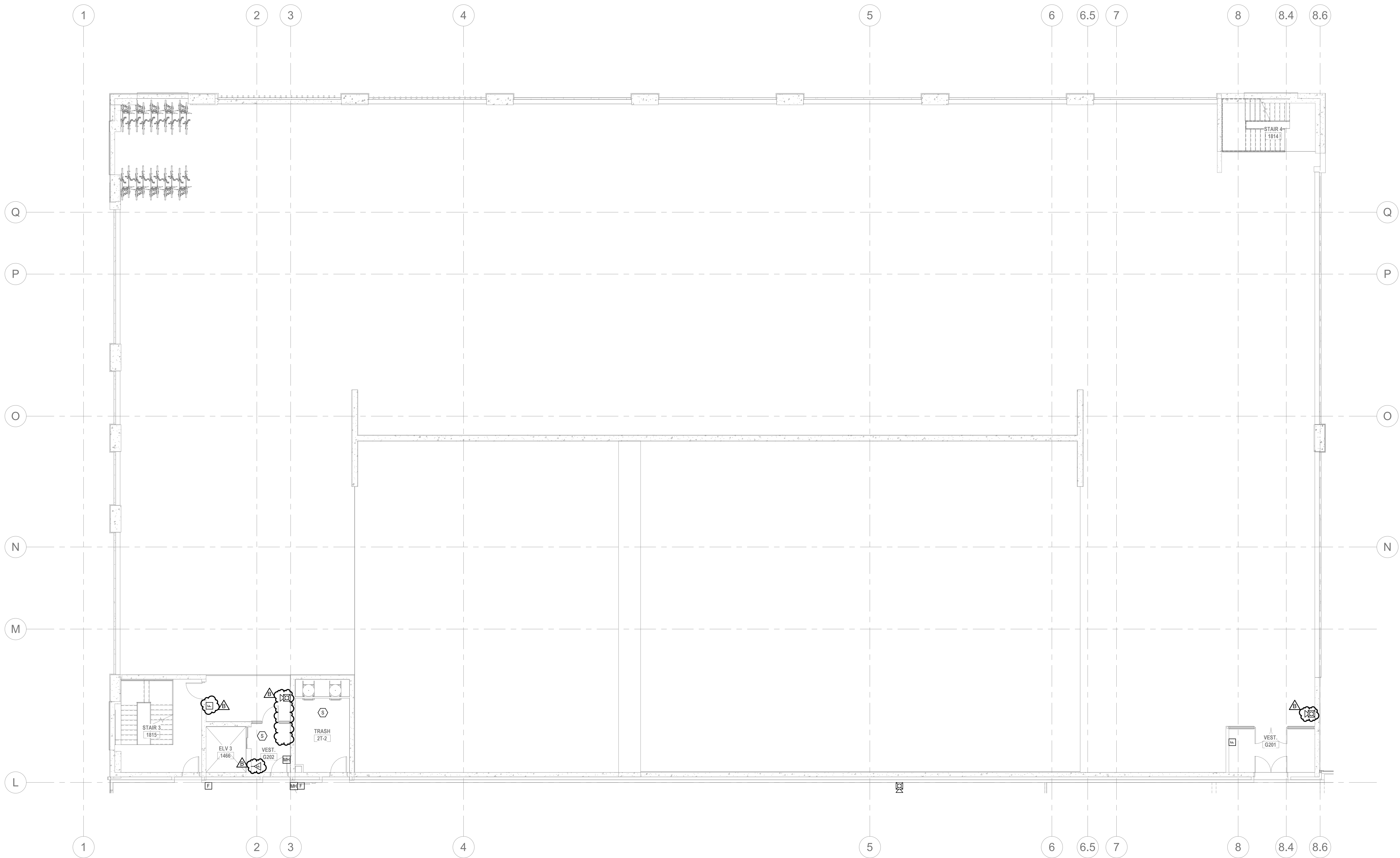
SCALE: AS INDICATED
DATE: 11/01/22



**** NOTE ****

THESE FIRE ALARM DRAWINGS ARE PERFORMANCE SPECIFICATION ONLY. CONTRACTOR SHALL PROVIDE A COMPLETE SYSTEM DESIGN IN COMPLIANCE WITH NFPA 72, THE IBC, NFPA 101, AND ANY OTHER ENFORCED CODES AND AMENDMENTS, INCLUDING ENGINEERED SIGNED AND SEALED DRAWINGS, POINT TO POINT WIRING WITH PROPOSED CIRCUITING OR CONDUIT ROUTING, ALL APPLICABLE CALCULATIONS, DEVICE MANUFACTURERS AND QUANTITIES, WIRING DIAGRAMS, AND SHOP SUBMITTALS. CONTRACTOR SHALL BE RESPONSIBLE FOR ALL ASSOCIATED PERMITS, INSPECTIONS, AND TESTING. CONSULT LOCAL BUILDING AUTHORITY AND FIRE MARSHAL REGARDING LOCAL AREA'S REQUIREMENTS.

- FIRE ALARM GENERAL NOTES**
1. REFER TO SHEETS QFA0.01 FOR NOTES, SYMBOLS AND ABBREVIATIONS.
 2. EC SHALL REFER TO TELECOM, SECURITY & AV DRAWINGS, DETAILS FOR FINAL DEVICE LOCATIONS & RACEWAY REQUIREMENTS.
 3. REFER TO MECHANICAL PLANS FOR DUCT SMOKE DETECTOR AND FIRE SMOKE DAMPER LOCATIONS. PROVIDE FA CONNECTION AND WIRE AS REQUIRED.
 4. REFER TO FIRE PROTECTION PLANS FOR TAMPER AND FLOW SWITCH LOCATIONS. PROVIDE FA CONNECTION AND WIRE AS REQUIRED.
 5. PROVIDE AREA SMOKE DETECTORS IN ELEVATORS LOBBIES AND ELEVATOR MACHINE ROOM(S). SMOKE DETECTORS SHALL BE LOCATED ON THE CEILING WITHIN 21 FEET OF THE CENTERLINE OF EACH ELEVATOR DOOR WITHIN THE ELEVATOR BANK UNDER CONTROL OF THE DETECTOR FOR ELEVATOR LOBBIES UP TO 15 FEET IN HEIGHT WITH FLAT AND SMOOTH CEILINGS. FOR HIGHER AND UNEVEN CEILINGS, ADDITIONAL SMOKE DETECTORS MAY BE REQUIRED.
 6. MANUAL FIRE ALARM BOXES SHALL BE LOCATED WITHIN 5 FEET OF EACH EXIT DOORWAY ON EACH FLOOR.
 7. DUCT SMOKE DETECTORS AND DUCT SMOKE DETECTORS TEST STATIONS LOCATIONS TO BE COORDINATED WITH THE MECHANICAL DRAWINGS.
 8. PROVIDE AND INSTALL SYSTEM FIRE ALARM ADDRESSABLE DUCT SMOKE DETECTORS AS INDICATED ON THE MECHANICAL FLOOR PLANS AND RISERS FOR FIRE SMOKE DAMPERS AND SMOKE DAMPERS. PROVIDE ADDRESSABLE CONTROL RELAY AT EACH DAMPER.
 9. PROVIDE 120V EMERGENCY POWER TO ALL FIRE/SMOKE AND SMOKE DAMPERS INDICATED ON THE MECHANICAL DRAWINGS.



1 FIRE ALARM - PARKING LEVEL 2 FLOOR PLAN
QFA2.05 1/8" = 1'-0"

ALL REPORTS, PLANS, SPECIFICATIONS AND COMPUTER FILES RELATING TO THIS PROJECT ARE THE PROPERTY OF THE MARTIN ARCHITECTURAL GROUP. THE MARTIN ARCHITECTURAL GROUP RESERVES ALL COMMON LAW, STATUTE AND OTHER RESERVED RIGHTS INCLUDING THE COPY RIGHT. THEFT, REPRODUCTION OF THE MATERIAL HEREIN OR SUBSTANTIAL USE WITHOUT WRITTEN PERMISSION OF THE MARTIN ARCHITECTURAL GROUP VIOLATES THE COPYRIGHT LAWS OF THE UNITED STATES AND WILL BE SUBJECT TO LEGAL PROSECUTION.
© The Martin Architectural Group, P.C.



THE MARTIN ARCHITECTURAL GROUP, P.C.
ARCHITECTS AND LAND PLANNERS
A PROFESSIONAL CORPORATION
240 NORTH 22ND STREET, PHILADELPHIA, PA, 19103
P (215) 665-1066 F (215) 561-5064

P.A.: JTG
P.M.: TRT
DRAWN BY: NIP
PROJECT NO: 1022747

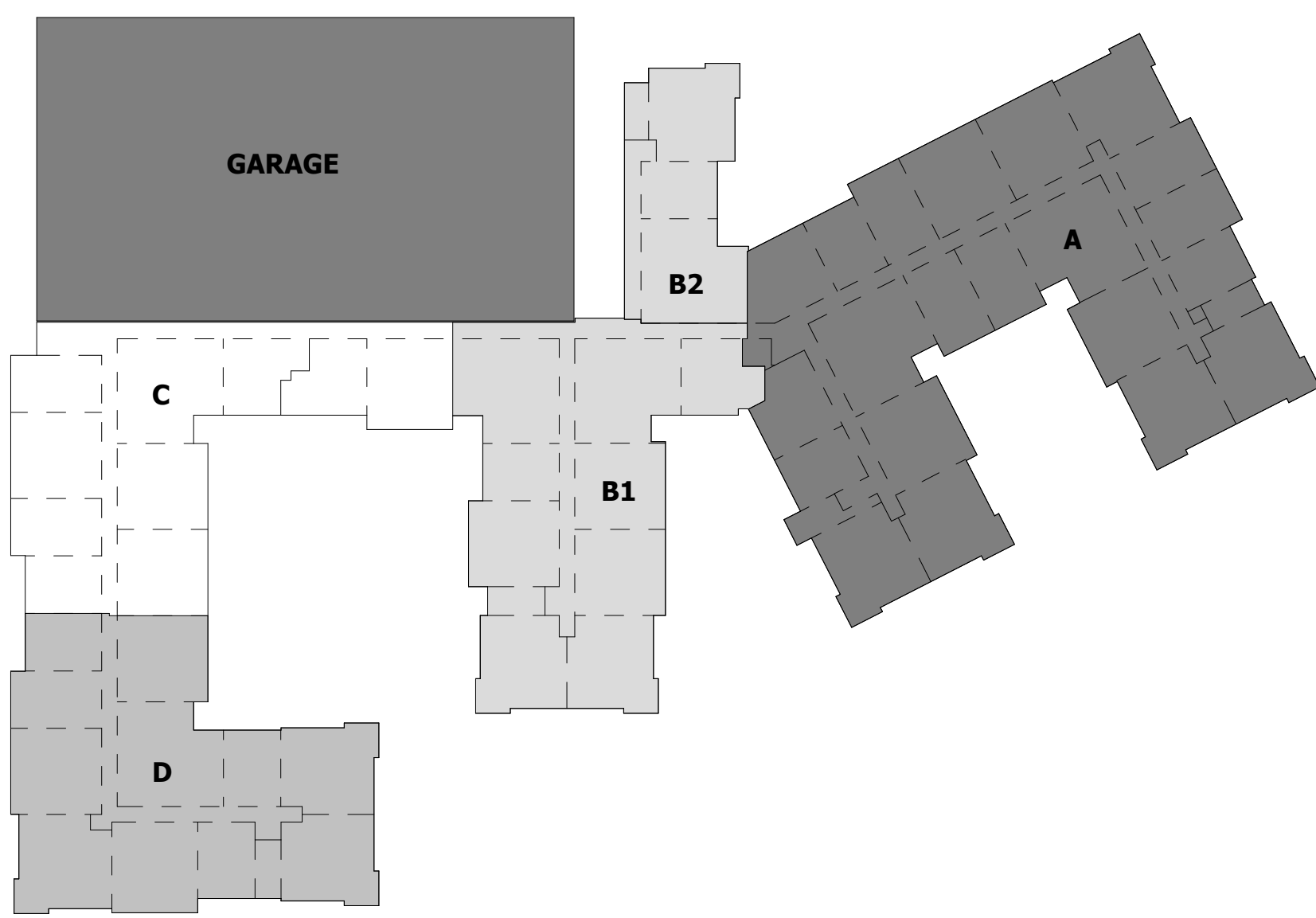
NO.	REVISION	DATE
A	PERMITS SET	12/17/2022
B	PERMITS COMMENTS	12/21/22

Project Status

FIRE ALARM - PARKING LEVEL 2 FLOOR PLAN
Granite Run Apartments
MIDDLETOWN TOWNSHIP, PA

SCALE: AS INDICATED
DATE: 11/01/22

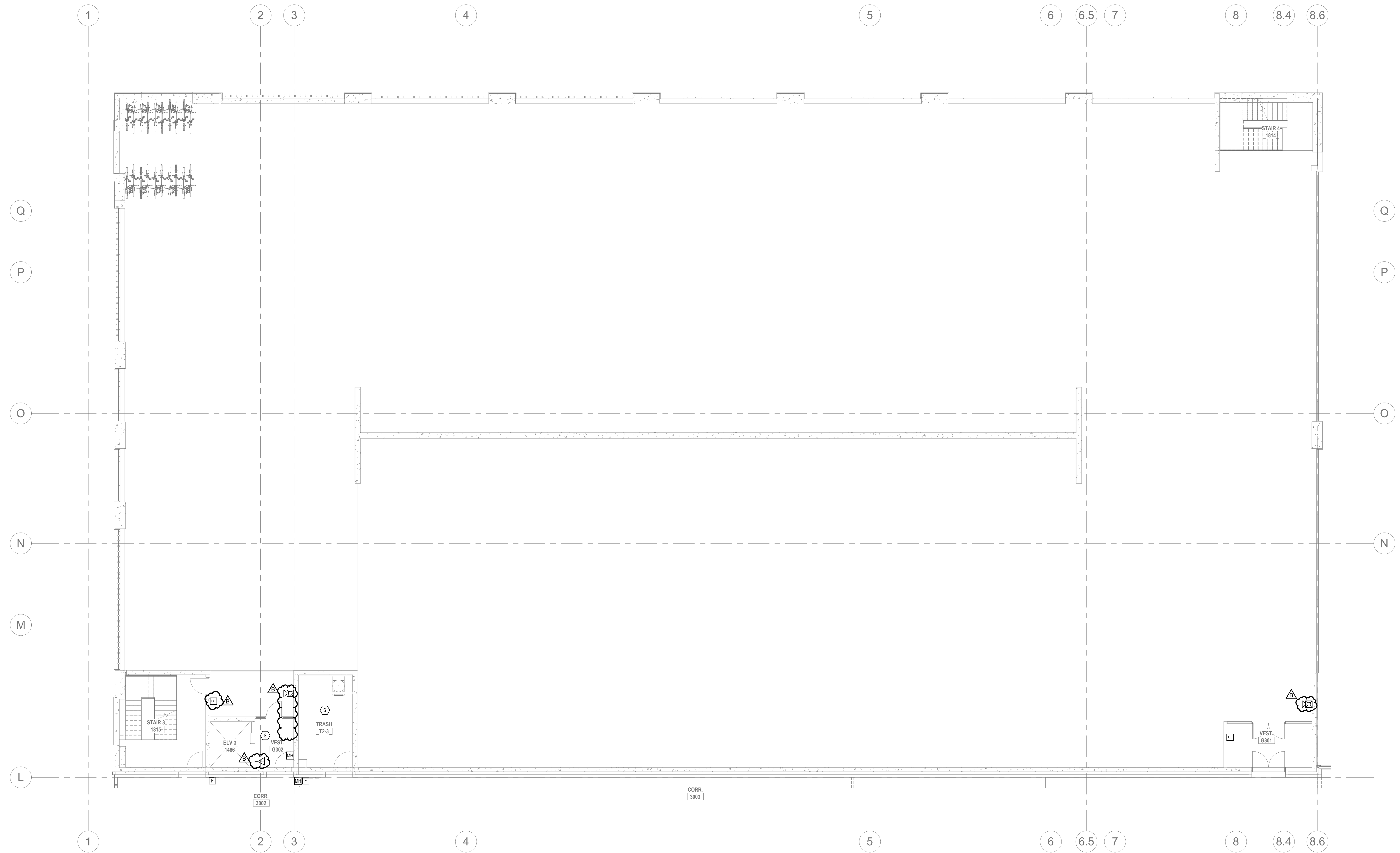
GFA2.05
© The Martin Architectural Group, P.C.



**** NOTE ****

THESE FIRE ALARM DRAWINGS ARE PERFORMANCE SPECIFICATION ONLY. CONTRACTOR SHALL PROVIDE A COMPLETE SYSTEM DESIGN IN COMPLIANCE WITH NFPA 72, THE IBC, NFPA 101, AND ANY OTHER ENFORCED CODES AND AMENDMENTS, INCLUDING ENGINEERED SIGNED AND SEALED DRAWINGS, POINT TO POINT WIRING WITH PROPOSED CIRCUITING OR CONDUIT ROUTING, ALL APPLICABLE CALCULATIONS, DEVICE MANUFACTURERS AND QUANTITIES, WIRING DIAGRAMS, AND SHOP SUBMITTALS. CONTRACTOR SHALL BE RESPONSIBLE FOR ALL ASSOCIATED PERMITS, INSPECTIONS, AND TESTING. CONSULT LOCAL BUILDING AUTHORITY AND FIRE MARSHAL REGARDING LOCAL AREA'S REQUIREMENTS.

- FIRE ALARM GENERAL NOTES**
1. REFER TO SHEETS GF-A0.01 FOR NOTES, SYMBOLS AND ABBREVIATIONS.
 2. EC SHALL REFER TO TELECOM, SECURITY & AV DRAWINGS, DETAILS FOR FINAL DEVICE LOCATIONS & RACEWAY REQUIREMENTS.
 3. REFER TO MECHANICAL PLANS FOR DUCT SMOKE DETECTOR AND FIRE SMOKE DAMPER LOCATIONS. PROVIDE FA CONNECTION AND WIRE AS REQUIRED.
 4. REFER TO FIRE PROTECTION PLANS FOR TAMPER AND FLOW SWITCH LOCATIONS. PROVIDE FA CONNECTION AND WIRE AS REQUIRED.
 5. PROVIDE AREA SMOKE DETECTORS IN ELEVATORS LOBBIES AND ELEVATOR MACHINE ROOM(S). SMOKE DETECTORS SHALL BE LOCATED ON THE CEILING WITHIN 21 FEET OF THE CENTERLINE OF EACH ELEVATOR DOOR WITHIN THE ELEVATOR BANK UNDER CONTROL OF THE DETECTOR FOR ELEVATOR LOBBIES UP TO 15 FEET IN HEIGHT WITH FLAT AND SMOOTH CEILINGS. FOR HIGHER AND UNEVEN CEILINGS, ADDITIONAL SMOKE DETECTORS MAY BE REQUIRED.
 6. MANUAL FIRE ALARM BOXES SHALL BE LOCATED WITHIN 5 FEET OF EACH EXIT DOORWAY ON EACH FLOOR.
 7. DUCT SMOKE DETECTORS AND DUCT SMOKE DETECTORS TEST STATIONS LOCATIONS TO BE COORDINATED WITH THE MECHANICAL DRAWINGS.
 8. PROVIDE AND INSTALL SYSTEM FIRE ALARM ADDRESSABLE DUCT SMOKE DETECTORS AS INDICATED ON THE MECHANICAL FLOOR PLANS AND RISERS FOR FIRE SMOKE DAMPERS AND SMOKE DAMPERS. PROVIDE ADDRESSABLE CONTROL RELAY AT EACH DAMPER.
 9. PROVIDE 120V EMERGENCY POWER TO ALL FIRE/SMOKE AND SMOKE DAMPERS INDICATED ON THE MECHANICAL DRAWINGS.



1 FIRE ALARM - PARKING LEVEL 3 FLOOR PLAN
 GF-A2.06
 1/8" = 1'-0"

ALL REPORTS, PLANS, SPECIFICATIONS AND COMPUTER FILES RELATING TO THIS PROJECT ARE THE PROPERTY OF THE MARTIN ARCHITECTURAL GROUP. REPRODUCTION OF THIS MATERIAL HEREIN OR SUBSTANTIAL USE WITHOUT THE WRITTEN PERMISSION OF THE MARTIN ARCHITECTURAL GROUP VIOLATES THE COPYRIGHT LAWS OF THE UNITED STATES AND WILL BE SUBJECT TO LEGAL PROSECUTION.
 © The Martin Architectural Group, P.C.



THE MARTIN ARCHITECTURAL GROUP, P.C.
 ARCHITECTS AND LAND PLANNERS
 A PROFESSIONAL CORPORATION
 240 NORTH 22ND STREET, PHILADELPHIA, PA, 19103
 P (215) 665-1066 F (215) 561-5064

P.A.: JTG
 P.M.: TRT
 DRAWN BY: NIP
 PROJECT NO: 1022747

NO.	REVISION	DATE
1	PERMIT SET	12/17/2022
2	PERMIT COMMENTS	12/21/22

Project Status

FIRE ALARM - PARKING LEVEL 3 FLOOR PLAN
Granite Run Apartments
 MIDDLETOWN TOWNSHIP, PA

SCALE: AS INDICATED
 DATE: 11/01/22

