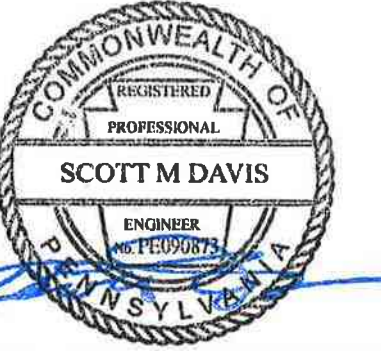


**FIRE PROTECTION - SECOND FLOOR PLAN**  
1/8" = 1'-0"

ALL REPORTS, PLANS, SPECIFICATIONS AND COMPUTER FILES RELATING TO THIS PROJECT ARE THE PROPERTY OF THE MARTIN ARCHITECTURAL GROUP. REPRODUCTION OF ANY PART OF THIS DOCUMENT WITHOUT THE WRITTEN PERMISSION OF THE MARTIN ARCHITECTURAL GROUP IS PROHIBITED. THE MARTIN ARCHITECTURAL GROUP WILL BE SUBJECT TO LEGAL PROSECUTION.



**THE MARTIN ARCHITECTURAL GROUP, P.C.**  
ARCHITECTS AND LAND PLANNERS  
A PROFESSIONAL CORPORATION  
240 NORTH 22ND STREET, PHILADELPHIA, PA, 19103  
P (215) 665-1066 F (215) 561-5064

P.A.: JTG  
P.M.: TRT  
DRAWN BY: RSK  
PROJECT NO: 1022747

| NO. | REVISION   | DATE       |
|-----|------------|------------|
| 1   | PERMIT SET | 12/07/2022 |

Project Status

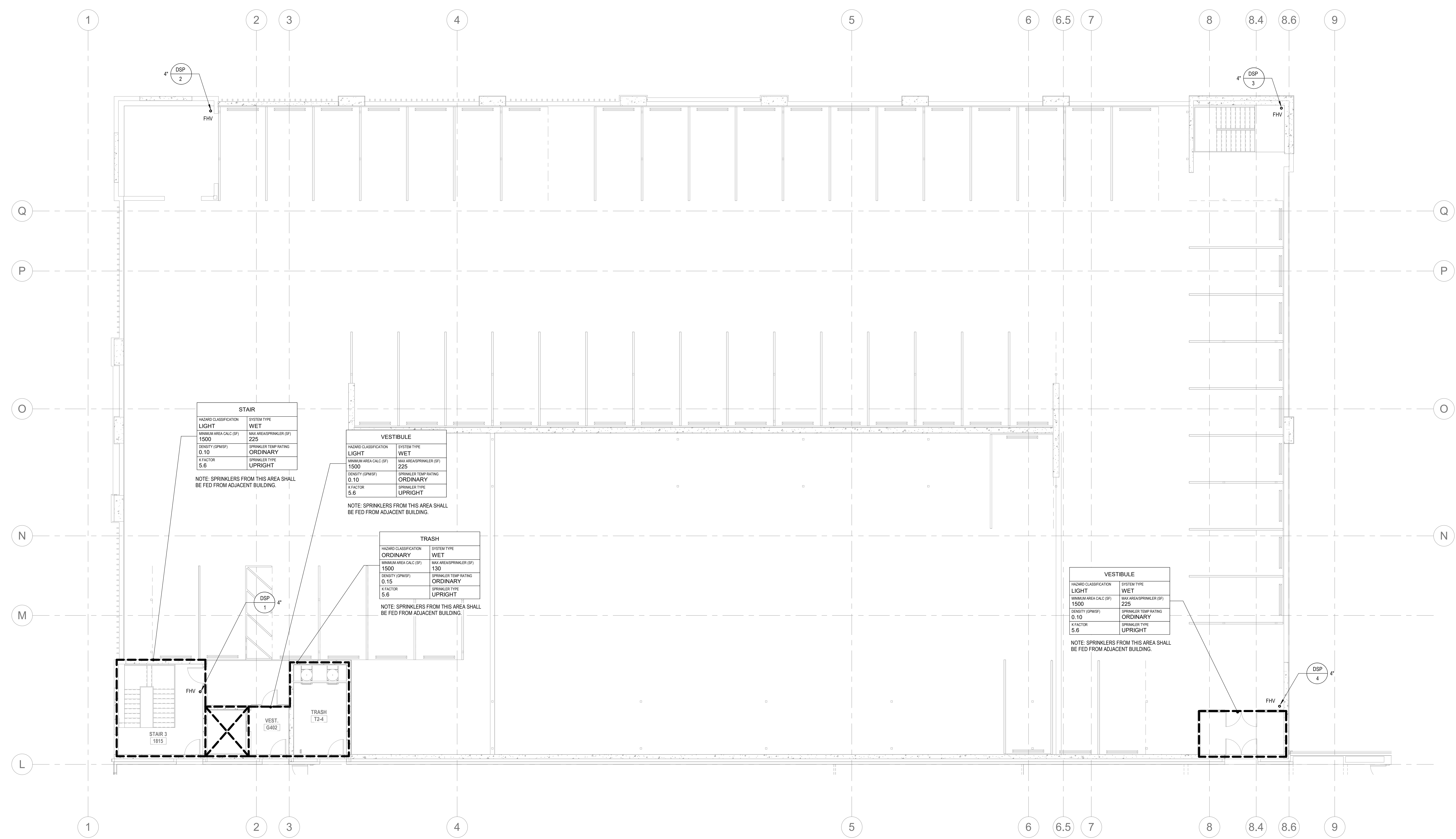
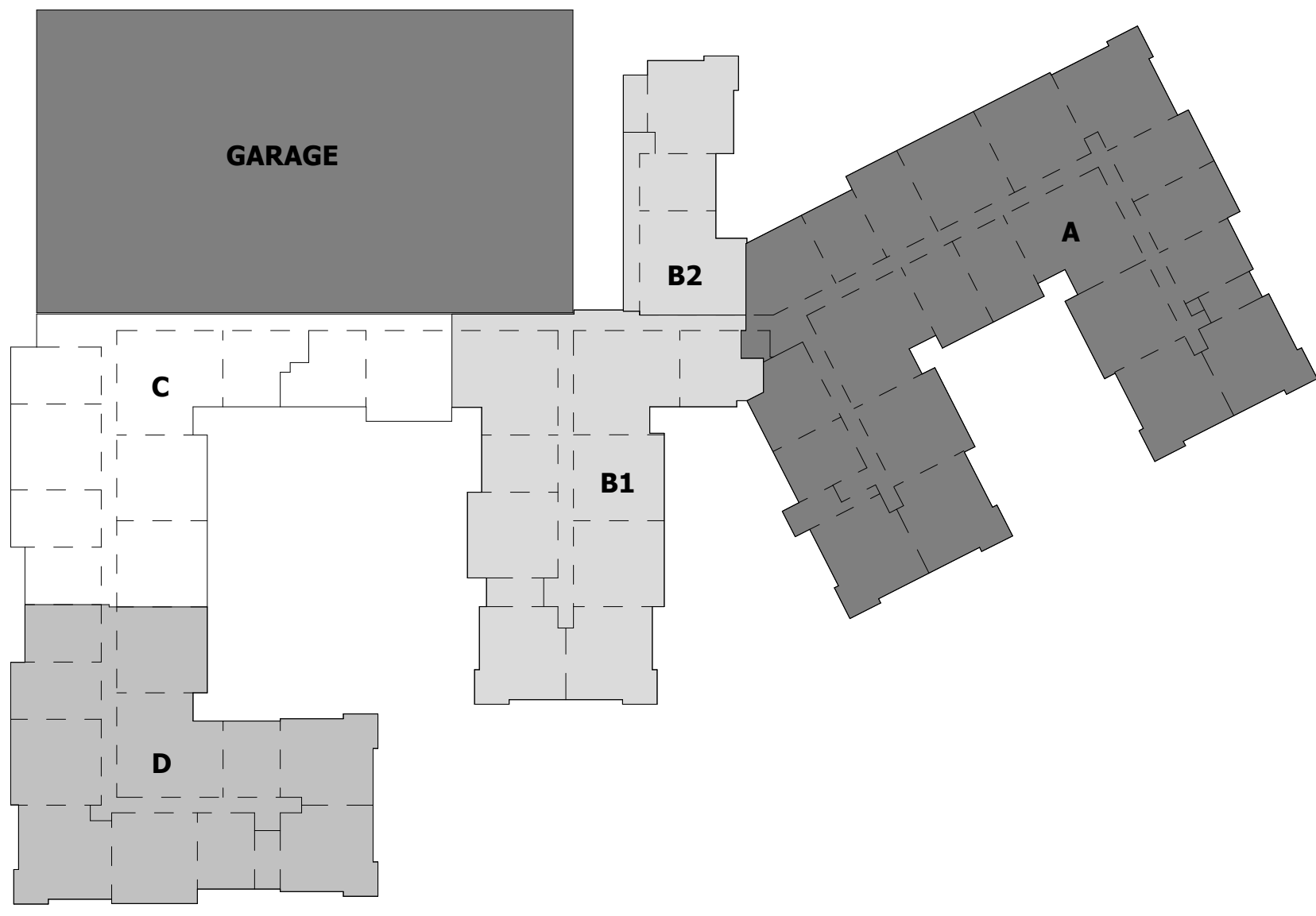
**FIRE PROTECTION - SECOND FLOOR PLAN**  
**Granite Run Apartments**  
MIDDLETOWN TOWNSHIP, PA

SCALE: AS INDICATED  
DATE: 12/07/22

**GFP2.05**

© The Martin Architectural Group, P.C.





| STAIR                   |          |
|-------------------------|----------|
| HAZARD CLASSIFICATION   | LIGHT    |
| SYSTEM TYPE             | WET      |
| MINIMUM AREA CALC (SF)  | 1500     |
| MAX AREA/SPRINKLER (SF) | 225      |
| DENSITY (GPM/SF)        | 0.10     |
| SPRINKLER TEMP RATING   | ORDINARY |
| K FACTOR                | 5.6      |
| SPRINKLER TYPE          | UPRIGHT  |

NOTE: SPRINKLERS FROM THIS AREA SHALL BE FED FROM ADJACENT BUILDING.

| VESTIBULE               |          |
|-------------------------|----------|
| HAZARD CLASSIFICATION   | LIGHT    |
| SYSTEM TYPE             | WET      |
| MINIMUM AREA CALC (SF)  | 1500     |
| MAX AREA/SPRINKLER (SF) | 225      |
| DENSITY (GPM/SF)        | 0.10     |
| SPRINKLER TEMP RATING   | ORDINARY |
| K FACTOR                | 5.6      |
| SPRINKLER TYPE          | UPRIGHT  |

NOTE: SPRINKLERS FROM THIS AREA SHALL BE FED FROM ADJACENT BUILDING.

| TRASH                   |          |
|-------------------------|----------|
| HAZARD CLASSIFICATION   | ORDINARY |
| SYSTEM TYPE             | WET      |
| MINIMUM AREA CALC (SF)  | 1500     |
| MAX AREA/SPRINKLER (SF) | 130      |
| DENSITY (GPM/SF)        | 0.15     |
| SPRINKLER TEMP RATING   | ORDINARY |
| K FACTOR                | 5.6      |
| SPRINKLER TYPE          | UPRIGHT  |

NOTE: SPRINKLERS FROM THIS AREA SHALL BE FED FROM ADJACENT BUILDING.

| VESTIBULE               |          |
|-------------------------|----------|
| HAZARD CLASSIFICATION   | LIGHT    |
| SYSTEM TYPE             | WET      |
| MINIMUM AREA CALC (SF)  | 1500     |
| MAX AREA/SPRINKLER (SF) | 225      |
| DENSITY (GPM/SF)        | 0.10     |
| SPRINKLER TEMP RATING   | ORDINARY |
| K FACTOR                | 5.6      |
| SPRINKLER TYPE          | UPRIGHT  |

NOTE: SPRINKLERS FROM THIS AREA SHALL BE FED FROM ADJACENT BUILDING.

ALL REPORTS, PLANS, SPECIFICATIONS AND COMPUTER FILES RELATING TO THIS PROJECT ARE THE PROPERTY OF THE MARTIN ARCHITECTURAL GROUP. REPRODUCTION OF ANY PART OF THIS DOCUMENT WITHOUT THE WRITTEN PERMISSION OF THE MARTIN ARCHITECTURAL GROUP IS STRICTLY PROHIBITED. THE MARTIN ARCHITECTURAL GROUP WILL BE SUBJECT TO LEGAL PROSECUTION.



THE MARTIN ARCHITECTURAL GROUP, P.C.  
ARCHITECTS AND LAND PLANNERS  
A PROFESSIONAL CORPORATION  
240 NORTH 22ND STREET, PHILADELPHIA, PA, 19103  
P (215) 665-1066 F (215) 561-5064

P.A.: JTG  
P.M.: TRT  
DRAWN BY: RSK  
PROJECT NO: 1022747

| NO. | REVISION   | DATE       |
|-----|------------|------------|
| 1   | PERMIT SET | 12/07/2022 |

Project Status

FIRE PROTECTION - FOURTH FLOOR PLAN  
**Granite Run Apartments**  
MIDDLETOWN TOWNSHIP, PA

SCALE: AS INDICATED  
DATE: 12/07/22