



THE MARTIN ARCHITECTURAL GROUP, P.C.
ARCHITECTS AND LAND PLANNERS
 A PROFESSIONAL CORPORATION
 240 NORTH 22ND STREET, PHILADELPHIA, PA, 19103
 P (215) 665-1060 F (215) 561-5064

P.A.:
 P.M.:
 DRAWN BY: Author
 PROJECT NO: 10-22-747

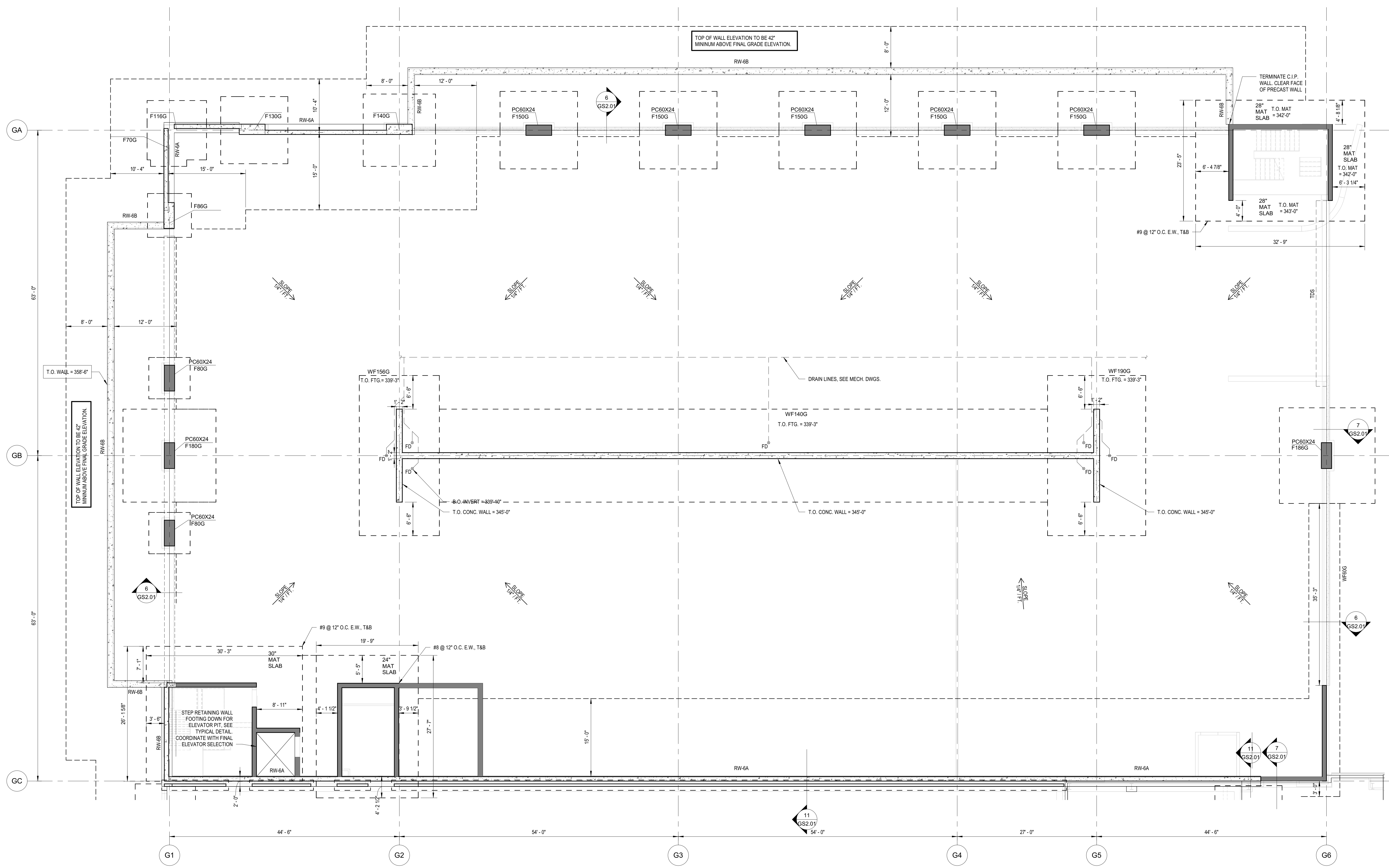
NO.	REVISION	DATE
1	PERMITS SET	12/20/2022
2	REVISION B	12/22/2022

IN PROGRESS

GARAGE FOUNDATION PLAN
Promenade at Granite Run
 Baltimore, Boston, New York, Philadelphia & Washington D.C.

SCALE:
 DATE: 10/31/22

GS1.00
 © The Martin Architectural Group, P.C.

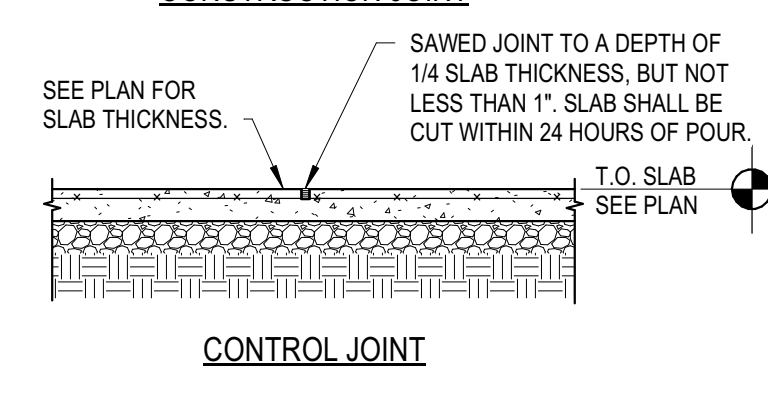
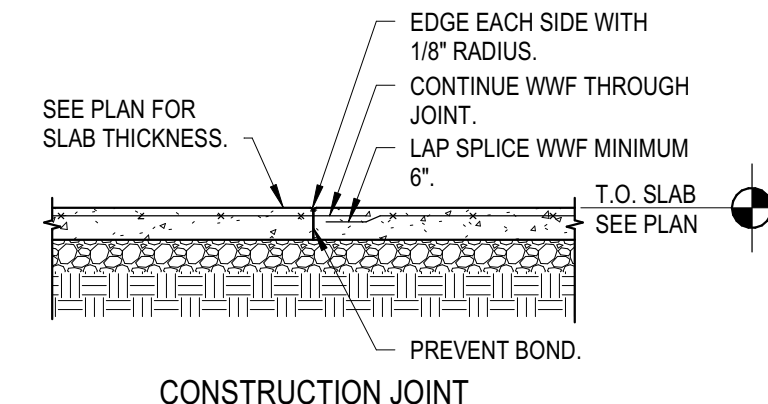


1 GARAGE FOUNDATION PLAN
 GS1.00 1/8" = 1'-0"

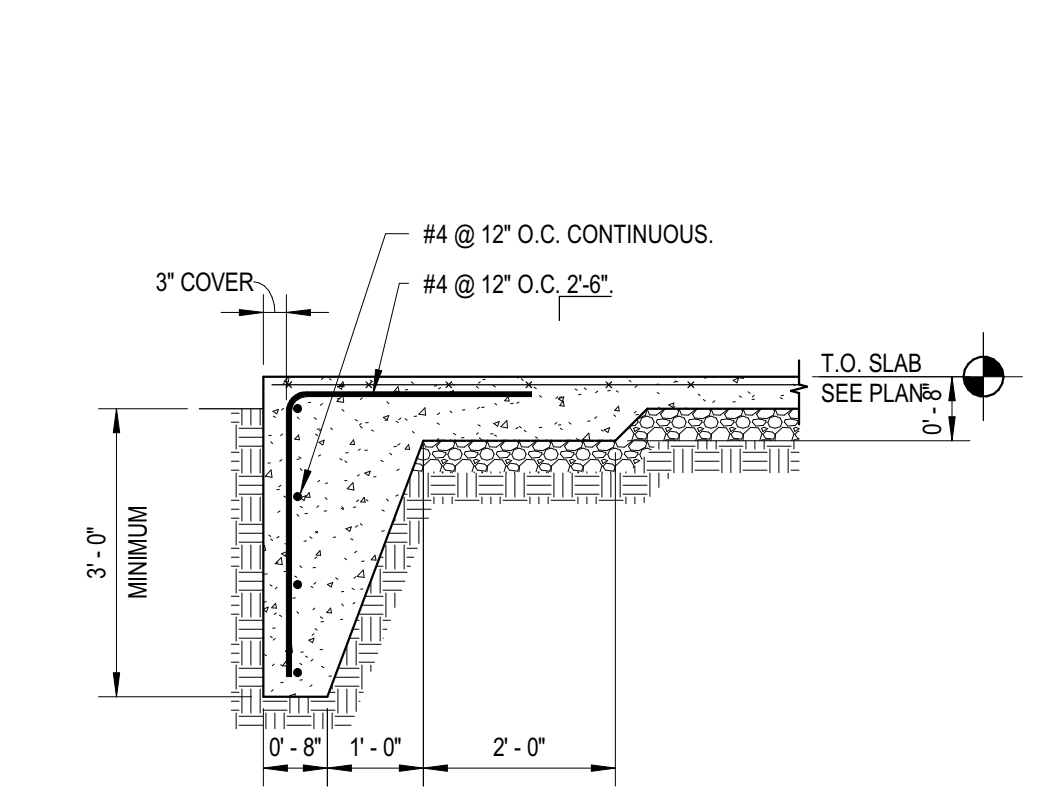
- GARAGE FOUNDATION SHEET NOTES**
- TOP OF SLAB ELEVATION IN REFERENCE TO CIVIL DATUM PLAN ELEVATION OF +343'-0" UNLESS NOTED OTHERWISE ON PLAN. COORDINATE SLOPE OF SLAB ON GRADE WITH ELEVATIONS NOTED AND CLEARANCES TO PRECAST STRUCTURE ABOVE.
 - SLAB ON GRADE SHALL BE 5" THICK AND REINFORCED WITH WELDED WIRE FABRIC (WWF) #6@11" X-WAY 4. ON A MINIMUM 4" THICK LAYER OF COMPACTED CRUSHED STONE, UNLESS NOTED OTHERWISE. SEE ARCHITECTURAL DRAWINGS FOR EXTENT OF 3'-0" WIDE WASH AROUND PERIMETER AND WALLS, EXCEPT FOR ADA PARKING STALLS AND WALKWAY AREAS.
 - ALL TOP OF FOOTING ELEVATIONS ARE REFERENCED TO CIVIL DATUM. TOP OF SLAB = 343'-0" AT PERIMETER (HIGH POINT) AND 341'-4" AT INTERIOR DRAINS (LOW POINT) ARE NOTED THUS (X'-X") ON PLAN. FOOTINGS ARE 342'-0" UNLESS NOTED OTHERWISE.
 - TOP OF PIER ELEVATION (0'-8") BELOW FINISHED FLOOR UNLESS NOTED (X'-X") ON PLAN.
 - COORDINATE ALL DIMENSIONS AND SECTIONS WITH ARCHITECTURAL DRAWINGS AND PRECAST MANUFACTURERS DRAWINGS PRIOR TO CONSTRUCTION. VERIFY ALL REQUIRED EMBEDMENTS, ANCHOR ROD PLACEMENTS, ETC. WITH TRACES PRIOR TO CONCRETE PLACEMENT.
 - ASSUMED ALLOWABLE SOIL BEARING CAPACITY IS 3000 PSF. BEARING CAPACITY SHOULD BE CONFIRMED BY A GEOTECHNICAL ENGINEER PRIOR TO PLACING FOOTINGS.
 - "TDS" INDICATES TURNED DOWN SLAB. SEE 10 / S2.01
 - FOUNDATIONS HAVE BEEN DESIGNED TO SUPPORT THE LOADS OF THE GARAGE REPORTED ON THE FOUNDATION LOAD SUMMARY DATED 10-11-2022.

FOOTING SCHEDULE		
(ALLOWABLE SOIL BEARING CAPACITY 3,000 PSF)		
MARK	FOOTING DIMENSIONS	REINFORCEMENT EACH WAY
F70G	7'-0"x7'-0"x2'-0"	8-#5
F80G	8'-0"x8'-0"x2'-0"	9-#5
F88G	8'-8"x8'-8"x2'-0"	10-#5
F116G	11'-6"x11'-6"x2'-0"	12-#6
F130G	13'-0"x13'-0"x2'-0"	14-#6
F140G	12'-0"x12'-0"x2'-0"	10-#8
F150G	12'-0"x12'-0"x2'-0"	10-#8
F180G	14'-0"x14'-0"x2'-8"	11-#9
F188G	15'-0"x15'-0"x2'-10"	12-#9
WF80G	8'-0"xCONT.x2'-0"	7-#5 CONT. T&B #5 @ 12" O.C. TRANS. T&B
WF140G	18'-0"xCONT.x2'-4"	19-#8 CONT. T&B #8 @ 12" O.C. TRANS. T&B
WF156G	15'-6"xCONT.x2'-8"	17-#9 CONT. T&B #9 @ 12" O.C. TRANS. T&B
WF190G	19'-0"xCONT.x3'-2"	20-#10 CONT. T&B #10 @ 12" O.C. TRANS. T&B

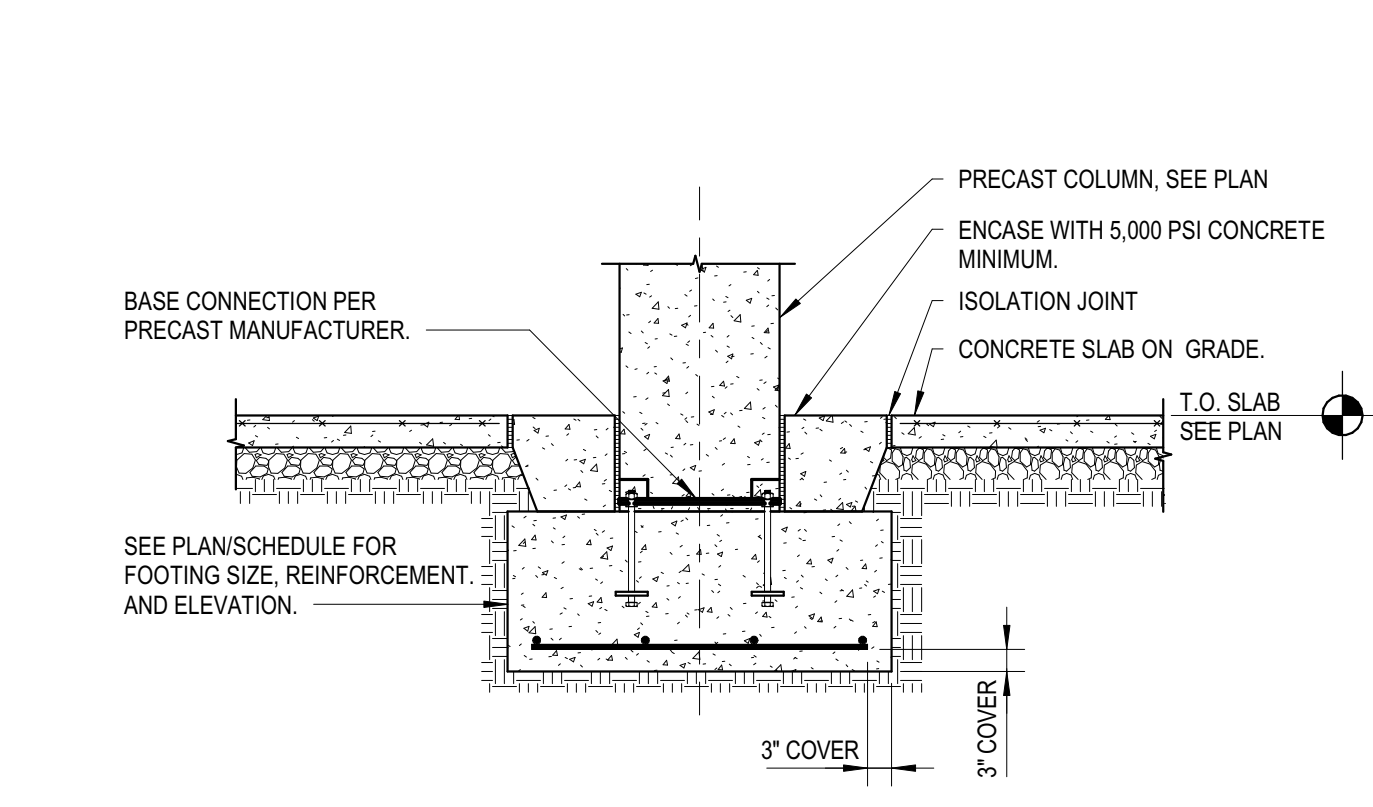
NOTE:
SEE FOUNDATION PLAN FOR TYPICAL BAY LOCATIONS.
COORDINATE WITH ARCHITECTURAL DRAWINGS AND SUBMIT
PLAN OF JOINT LOCATIONS FOR ARCHITECTURAL REVIEW.
RECOMMENDED MAXIMUM GRID 15'-0" X 15'-0".



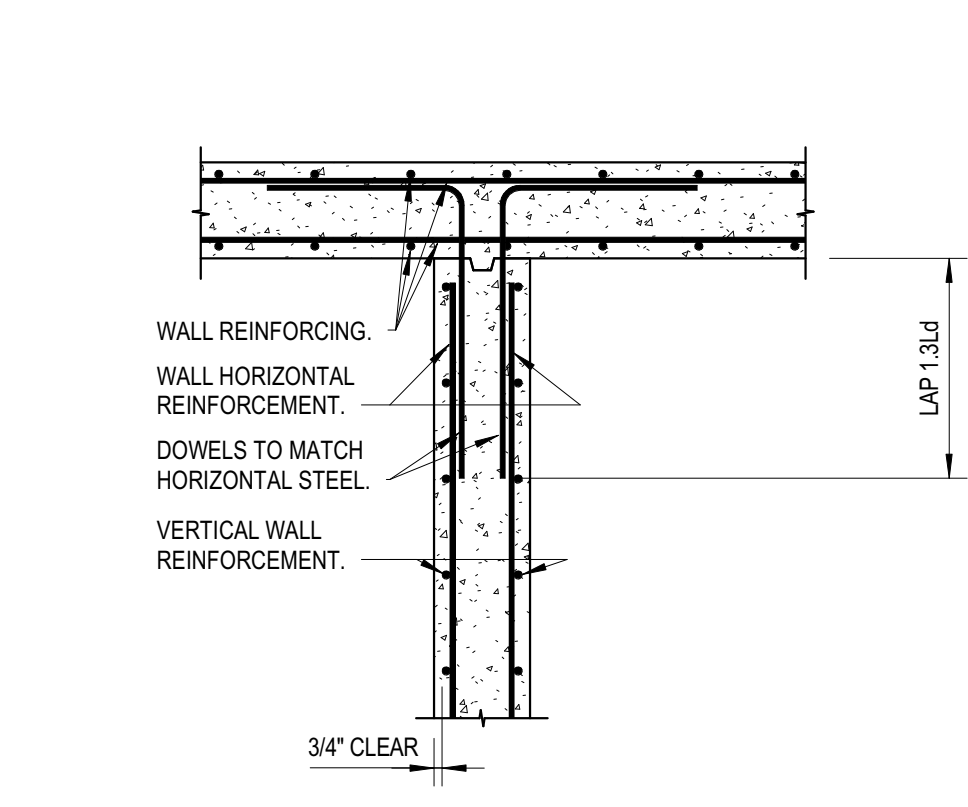
1 TYPICAL SLAB ON GRADE DETAIL
GS2.01 1/2" = 1'-0"



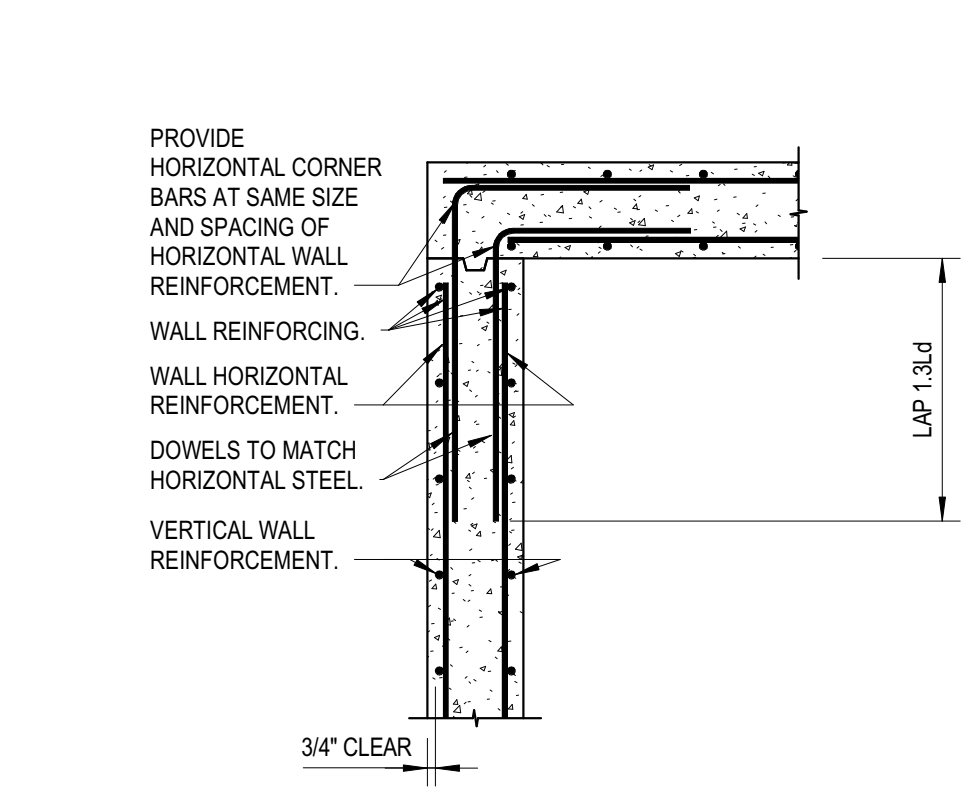
2 TYPICAL TURNED DOWN SLAB
GS2.01 1/2" = 1'-0"



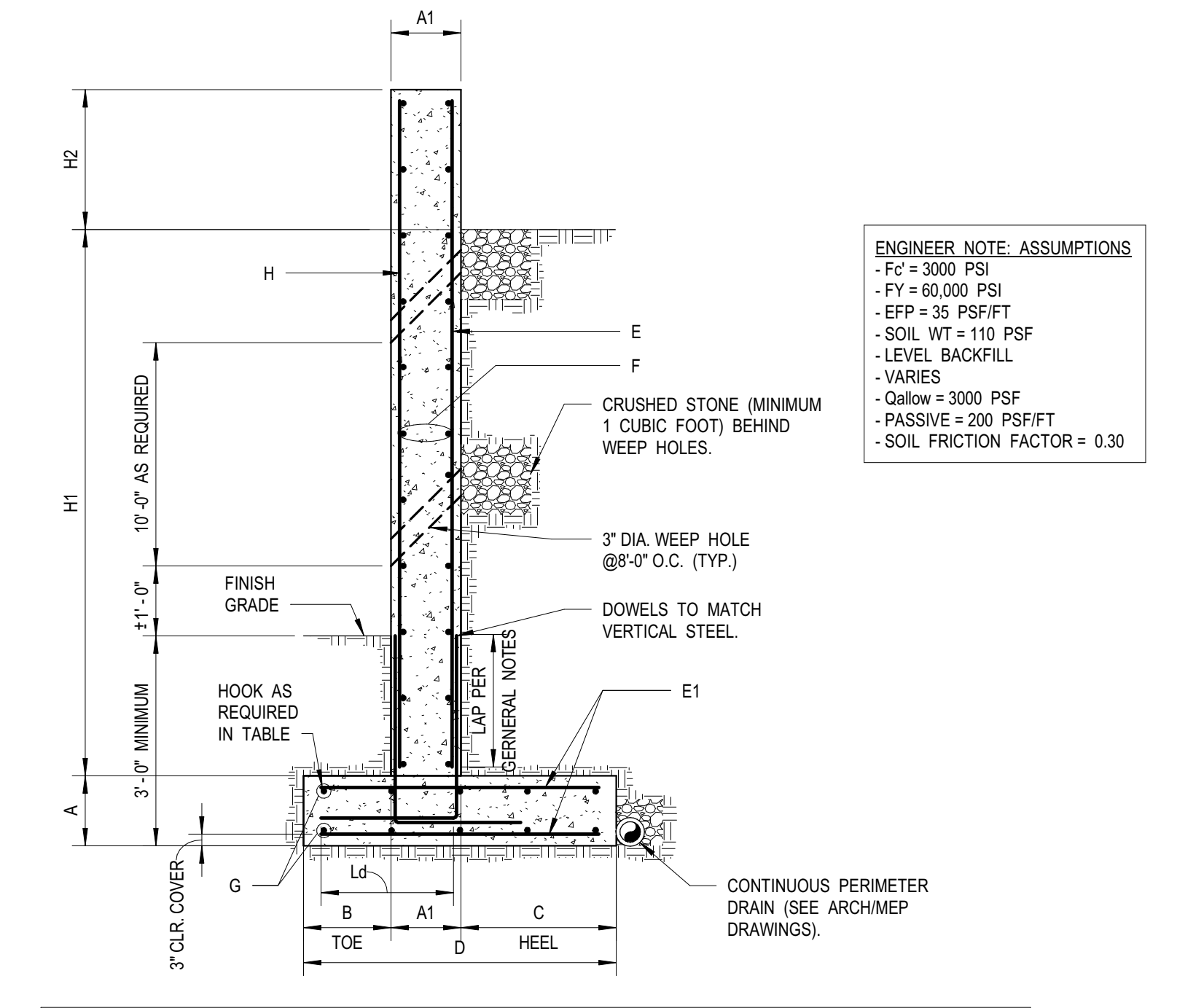
3 TYPICAL PRECAST COLUMN TO FOOTING CONNECTION
GS2.01 1/2" = 1'-0"



4 TYPICAL INTERSECTING WALL DETAIL
GS2.01 1/2" = 1'-0"



5 TYPICAL CORNER WALL DETAIL
GS2.01 1/2" = 1'-0"



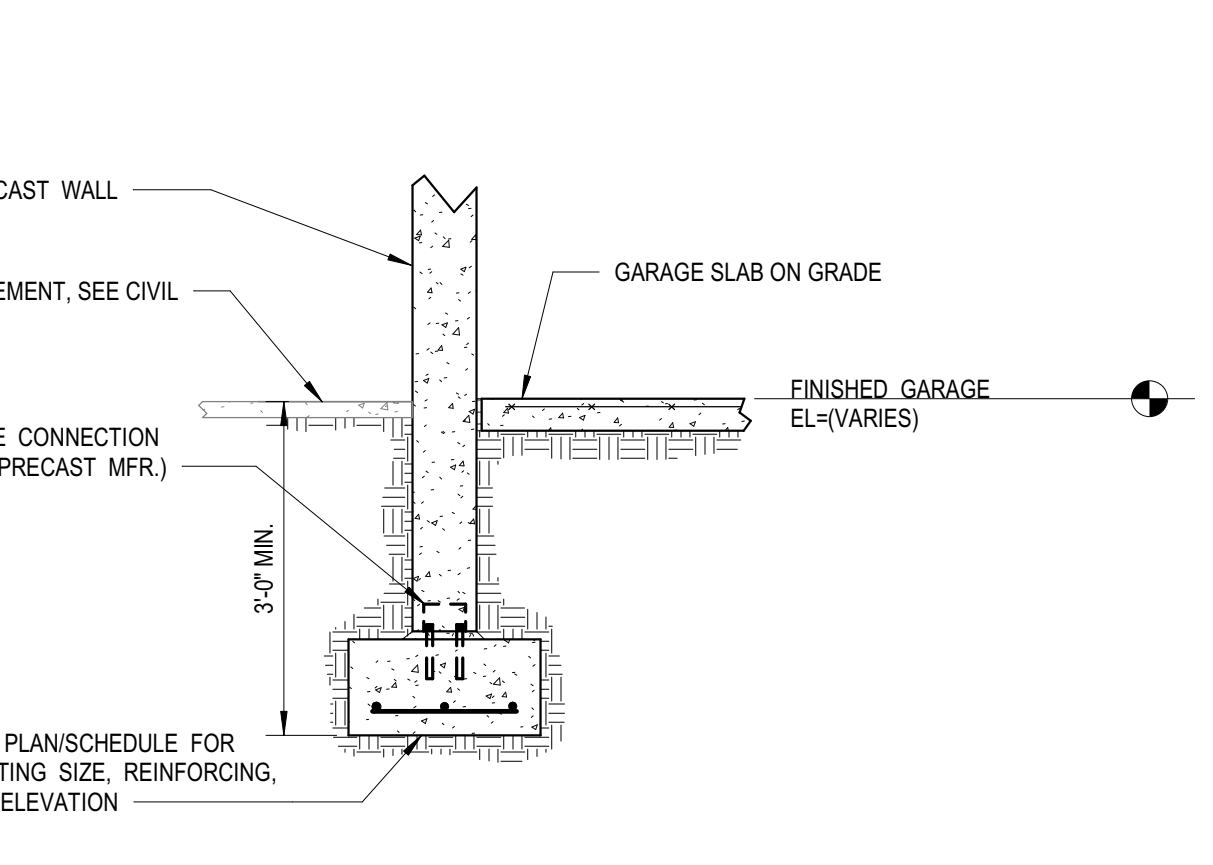
ENGINEER NOTE: ASSUMPTIONS
 - FC = 3000 PSI
 - FY = 60,000 PSI
 - EFP = 35 PSF/FT
 - SOIL WT = 110 PSF
 - LEVEL BACKFILL
 - VARIES
 - GULCH = 3000 PSF
 - PASSIVE = 200 PSF/FT
 - SOIL FRICTION FACTOR = 0.30

CONCRETE SITE RETAINING WALL SCHEDULE NO SURCHARGE

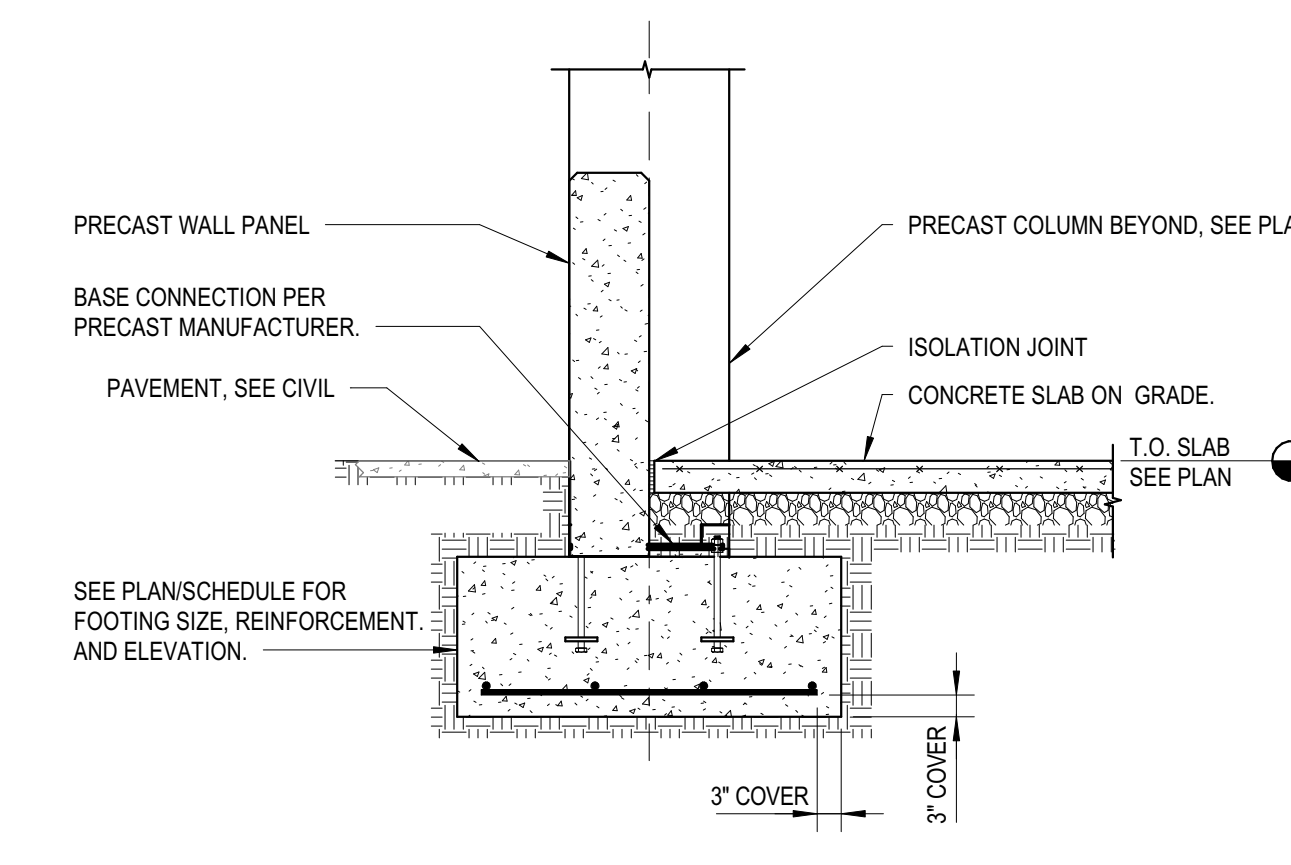
WALL	H1	H2	A	A1	B	C	D	E	E1	F	G	H
RW2	7'-9"	-	1'-0"	1'-0"	1'-8"	5'-4"	8'-0"	#5@12"	#5@12"	#4@12"	(8) #4	#5@12"
RWB	15'-0" TO 16'-0"	3'-6"	2'-2"	2'-0"	10'-4"	15'-0"	27'-4"	#7@8"	#9@8" HK	#5@12"	(27) #5	#7@10"
RWB8	15'-0" TO 16'-0"	3'-6"	1'-8"	2'-0"	8'-0"	12'-0"	22'-0"	#7@10"	#8@8" HK	#5@12"	(22) #5	#7@10"

NOTE: "HK" DENOTES STANDARD 90 DEGREE HOOK OF BAR AT TOE.

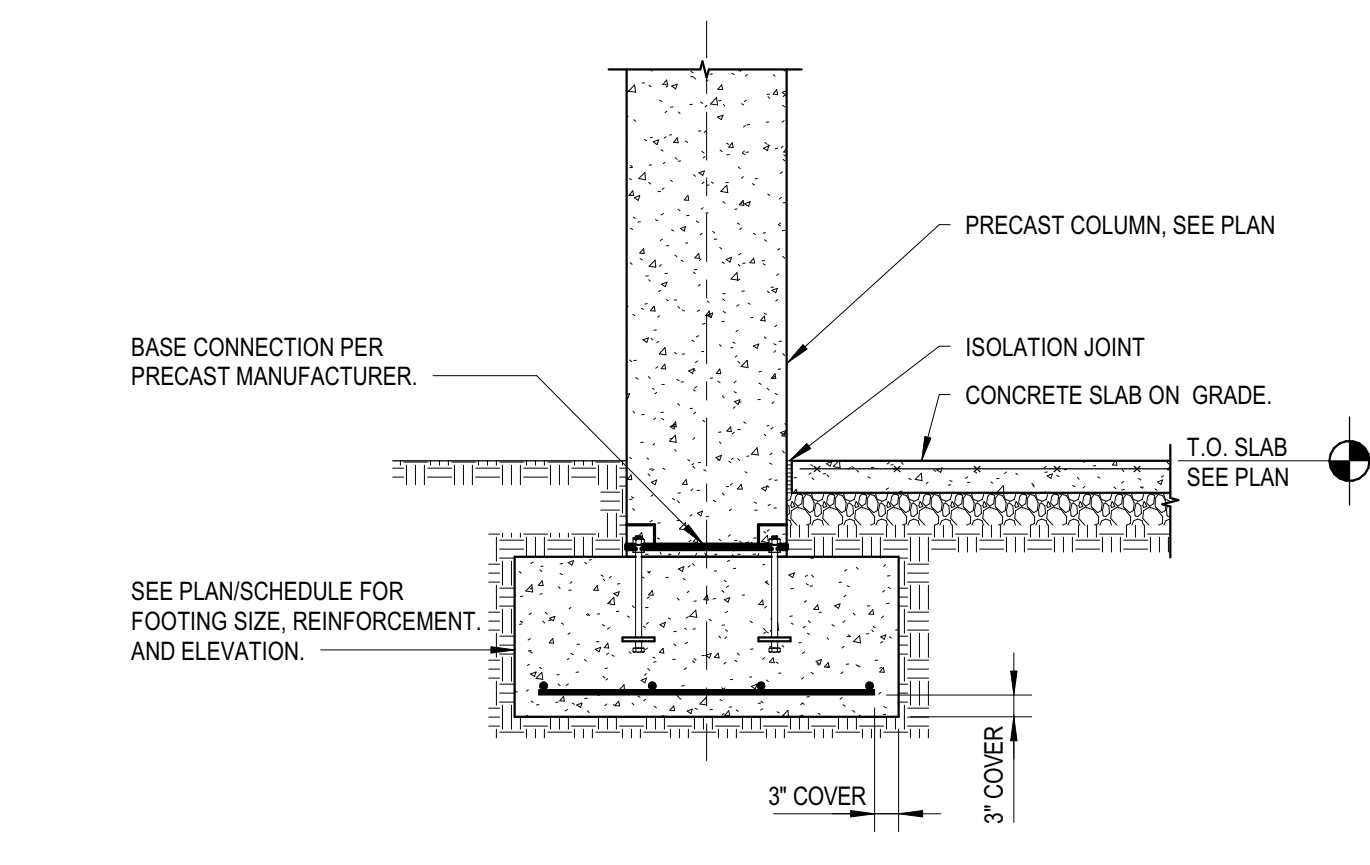
10 TYPICAL CONCRETE SITE RETAINING WALL - GARAGE
GS2.01 1/2" = 1'-0"



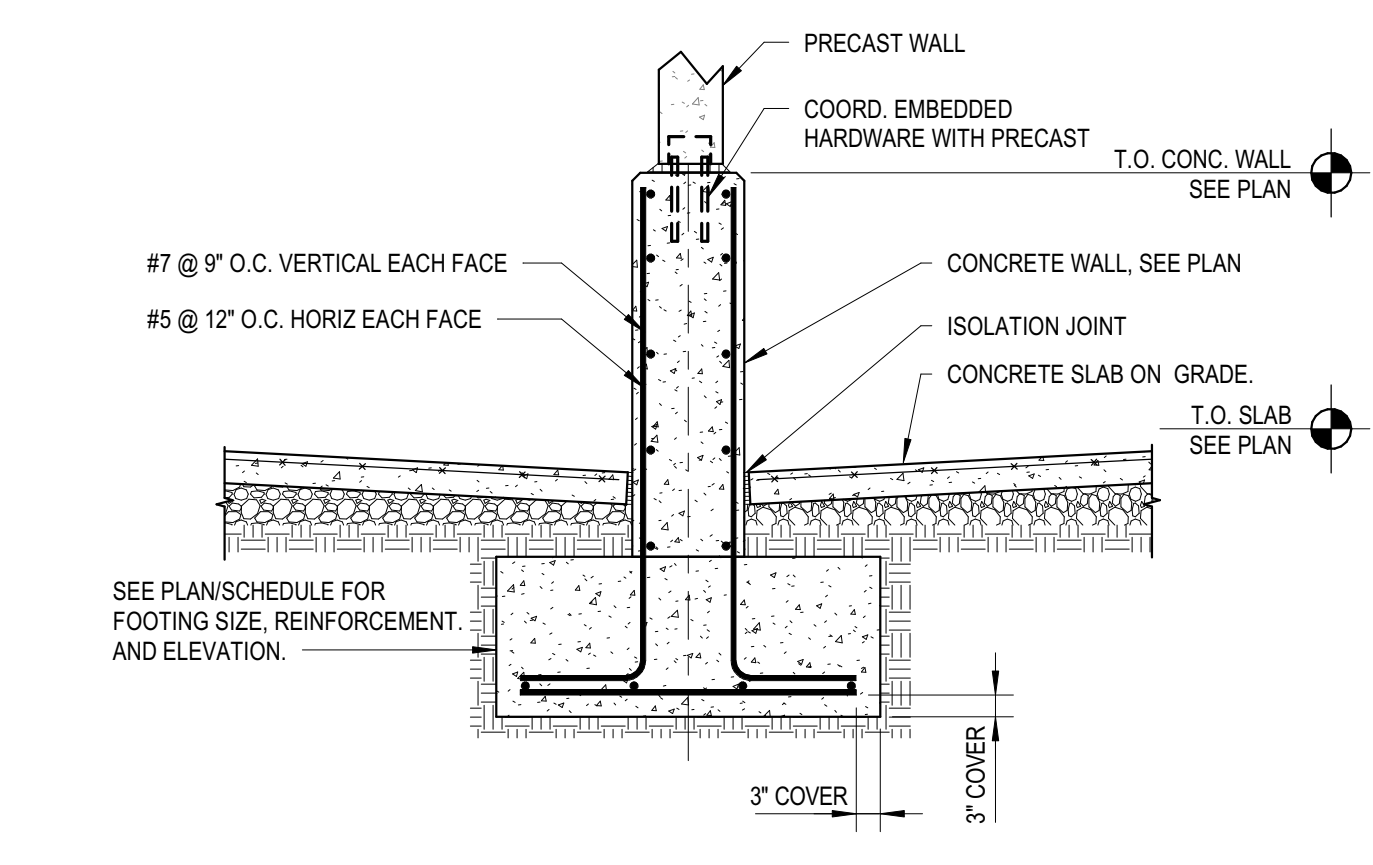
6 SECTION AT EXTERIOR PRECAST WALL
GS2.01 1/2" = 1'-0"



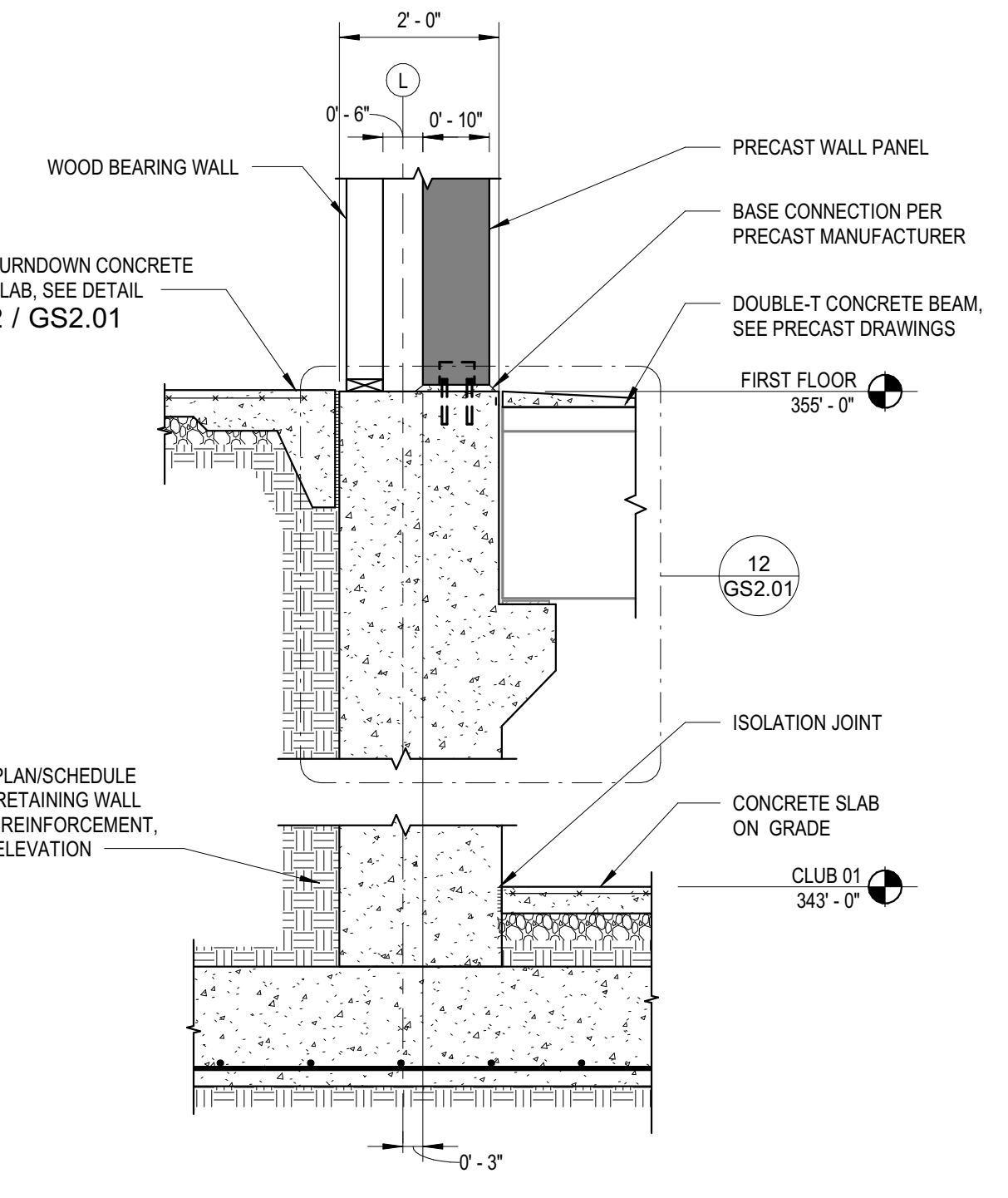
7 SECTION AT EXTERIOR PRECAST KNEE WALL
GS2.01 1/2" = 1'-0"



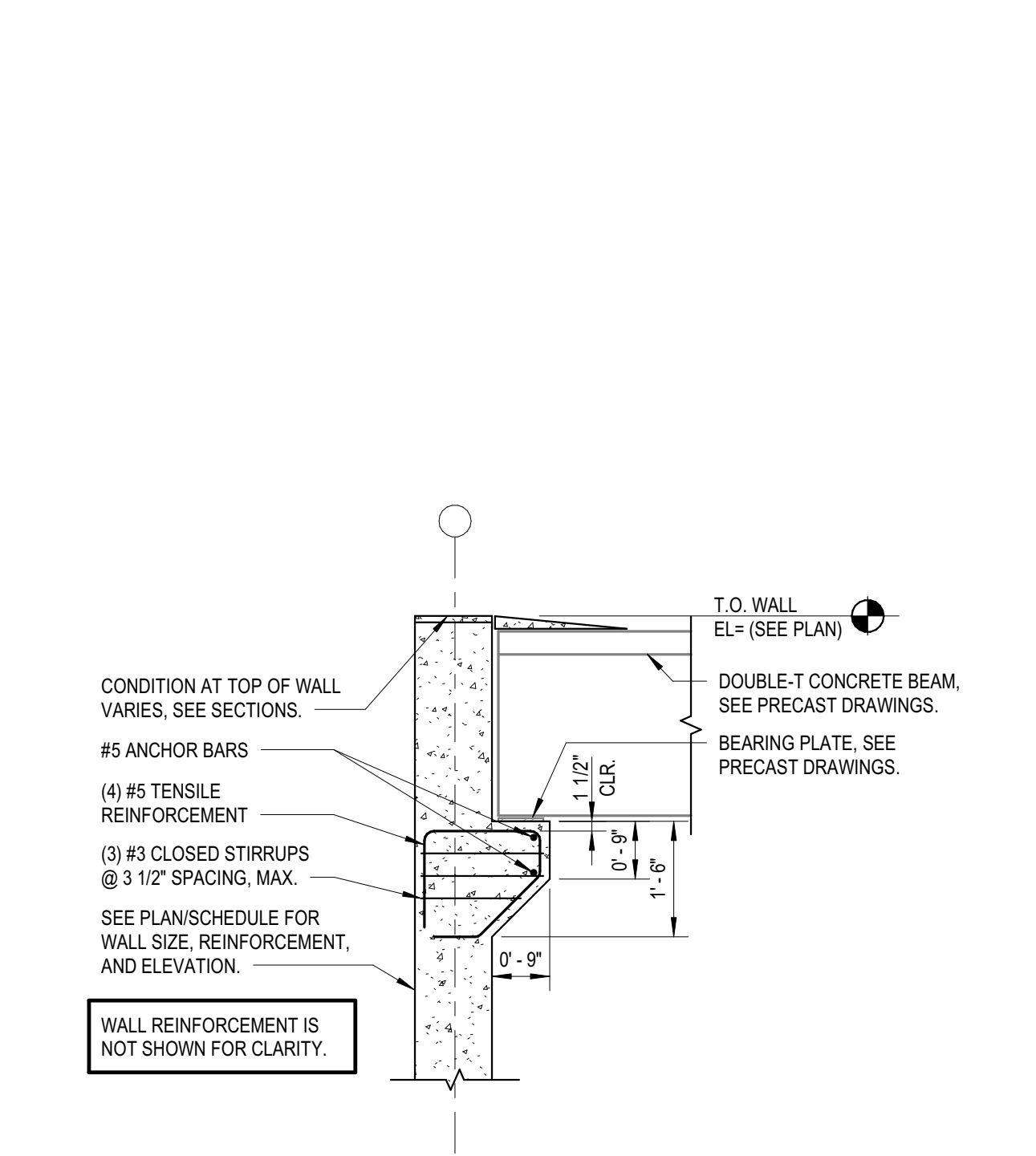
8 SECTION AT EXTERIOR PRECAST COLUMN
GS2.01 1/2" = 1'-0"



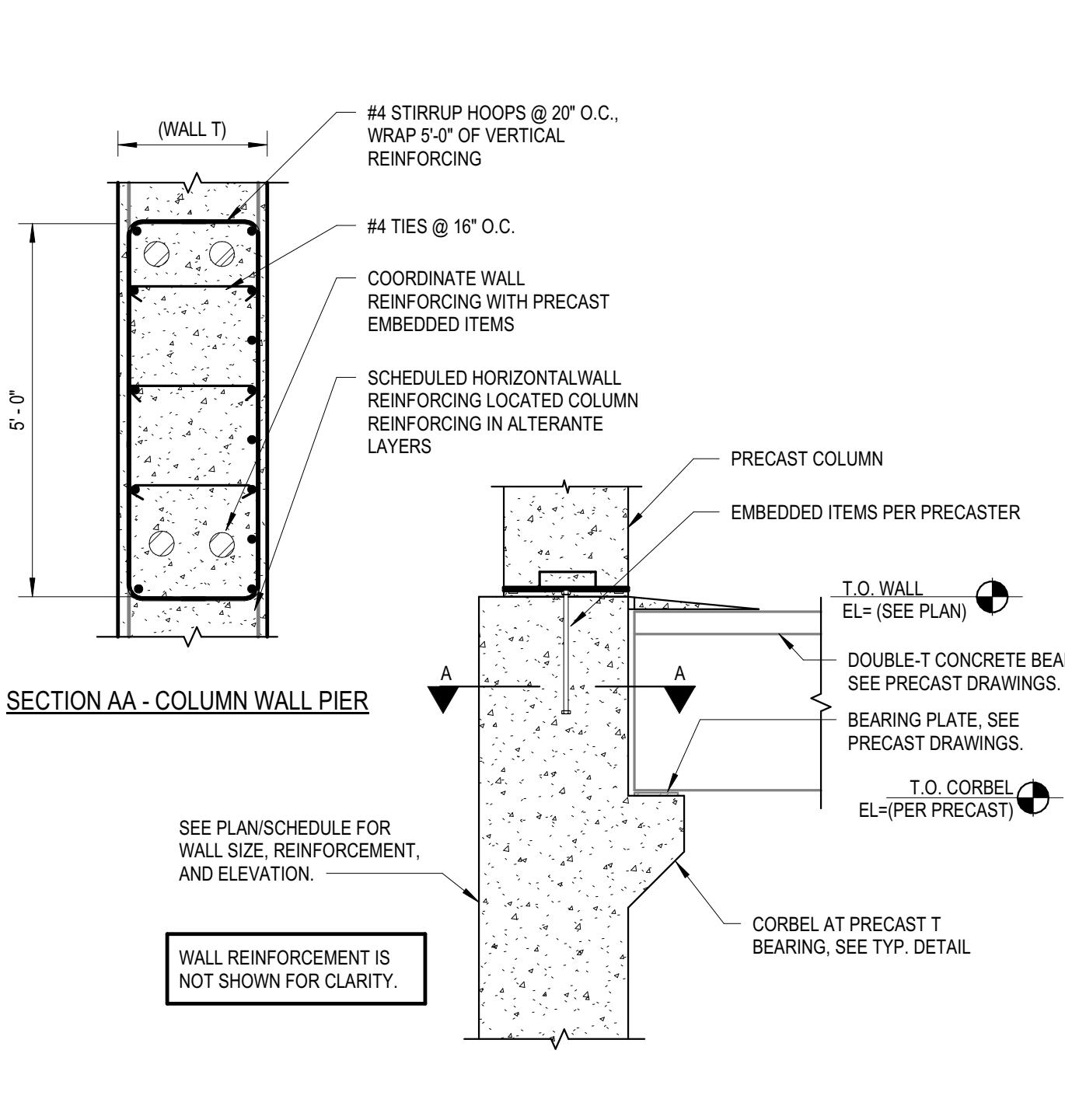
9 SECTION AT INTERIOR CONCRETE KNEE WALL
GS2.01 1/2" = 1'-0"



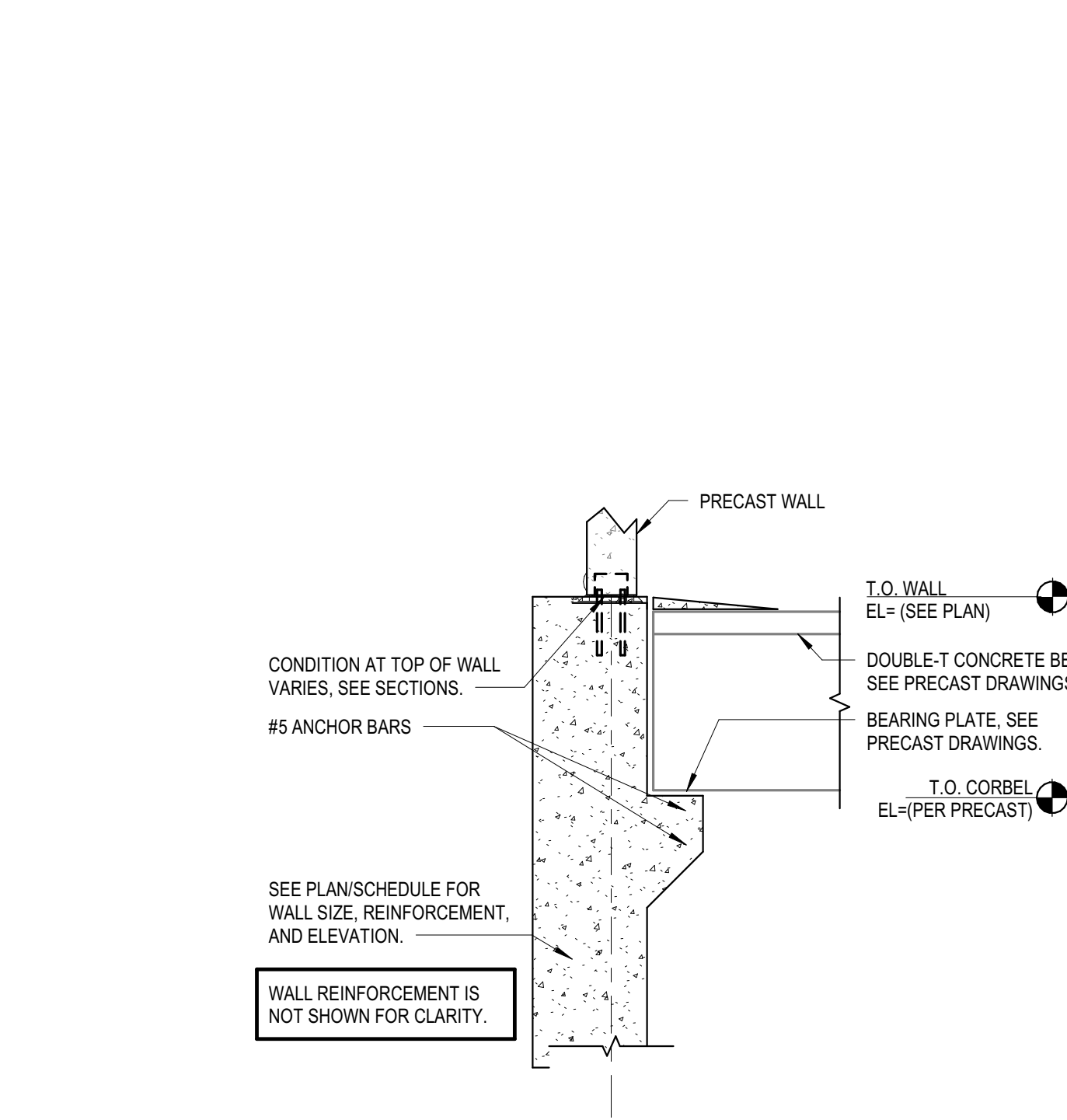
11 SECTION AT APARTMENT BUILDING TRANSITION
GS2.01 1/2" = 1'-0"



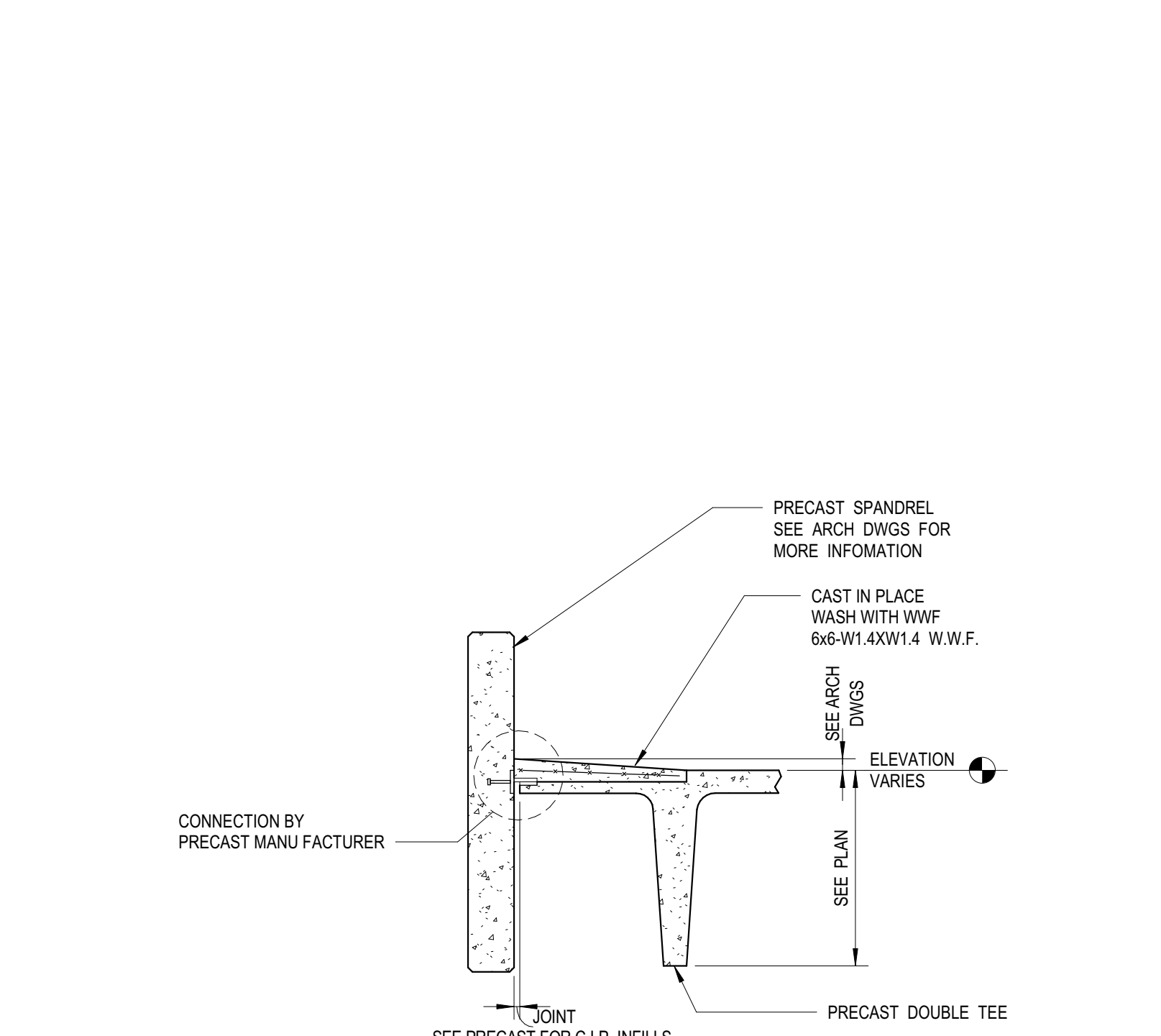
12 SECTION AT TYPICAL CORBEL
GS2.01 1/2" = 1'-0"



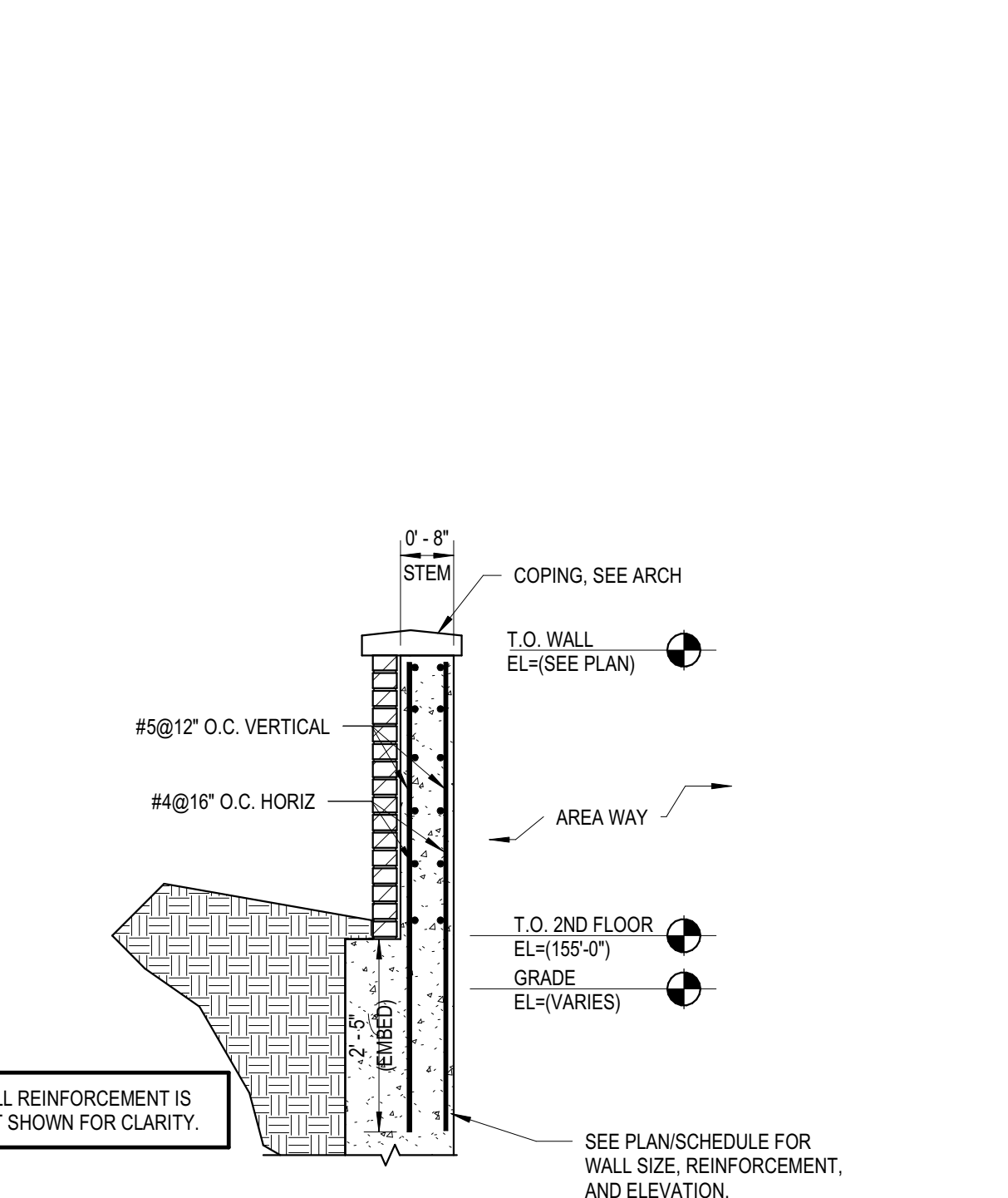
13 SECTION AT TYPICAL CORBEL AT PRECAST COLUMN
GS2.01 1/2" = 1'-0"



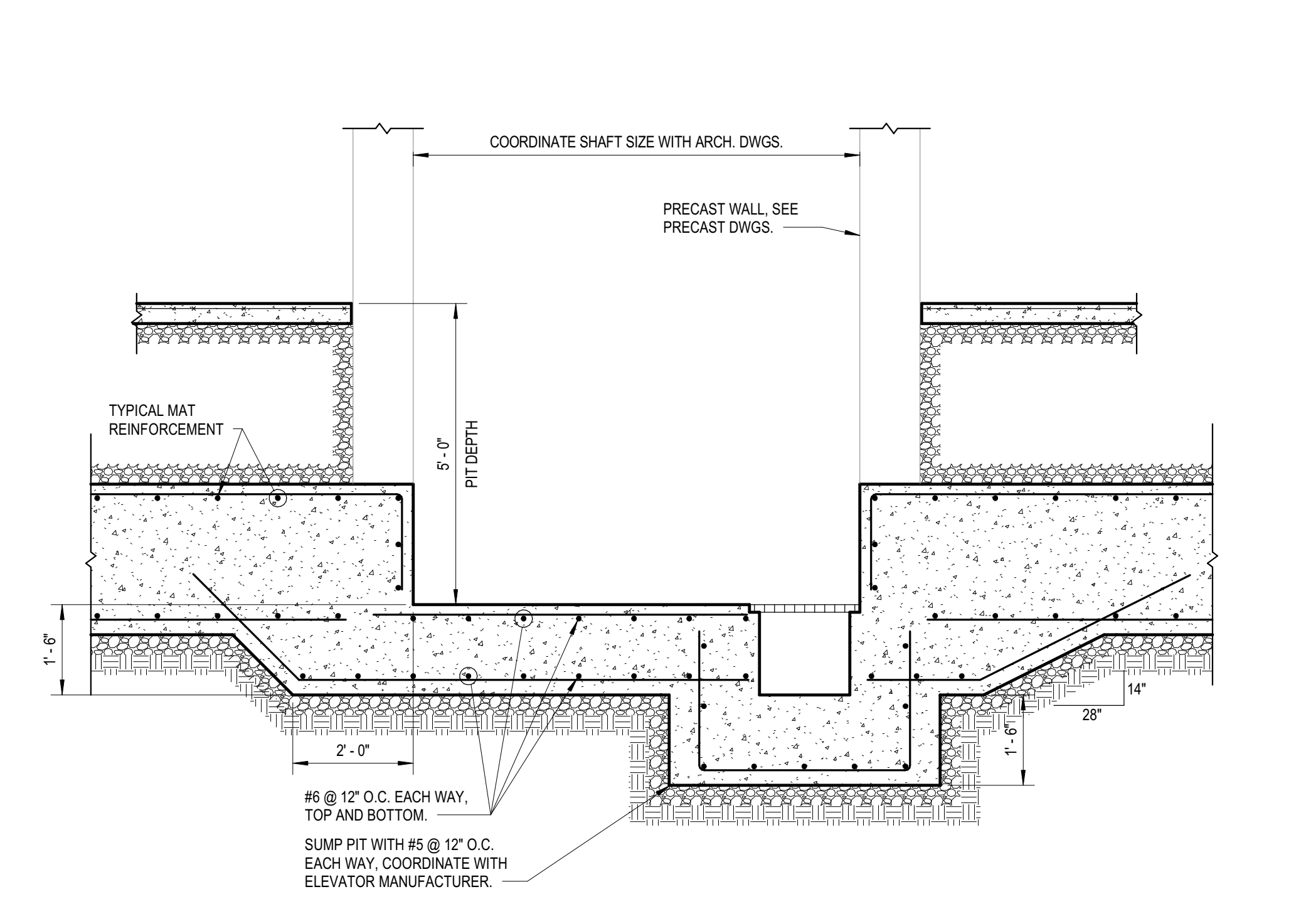
14 SECTION AT TYPICAL CORBEL AT PRECAST WALL
GS2.01 1/2" = 1'-0"



15 SECTION AT PRECAST PARALLEL TO WALL
GS2.01 1/2" = 1'-0"



16 SECTION AT TYPICAL KNEE WALL
GS2.01 1/2" = 1'-0"



17 SECTION AT ELEVATOR PIT
GS2.01 1/2" = 1'-0"

ALL REPORTS, PLANS, SPECIFICATIONS AND COMPUTER FILES RELATING TO THIS PROJECT ARE THE PROPERTY OF THE MARTIN ARCHITECTURAL GROUP. THE MARTIN ARCHITECTURAL GROUP RETAINS ALL COMMON LAW, STATUTE AND OTHER RESERVED RIGHTS INCLUDING THE COPY RIGHT THEREIN. REPRODUCTION OF THE MATERIAL HEREIN OR SUBSTANTIAL USE WITHOUT WRITTEN PERMISSION OF THE MARTIN ARCHITECTURAL GROUP VIOLATES THE COPYRIGHT LAWS OF THE UNITED STATES AND WILL BE SUBJECT TO LEGAL PROSECUTION.
© The Martin Architectural Group, P.C.



THE MARTIN ARCHITECTURAL GROUP, P.C.
ARCHITECTS AND LAND PLANNERS
A PROFESSIONAL CORPORATION
240 NORTH 22ND STREET, PHILADELPHIA, PA. 19103
P (215) 665-1060 F (215) 561-5064

P.A.1:
P.M.:
DRAWN BY: Author
PROJECT NO: 10-22-747

NO.	REVISION	DATE
1	PERMIT SET	12/20/2022
2	REVISION B	12/22/2022

IN PROGRESS

GARAGE DETAILS AND SECTIONS
Promenade at Granite Run
Baltimore, Boston, New York, Philadelphia & Washington D.C.

SCALE:
DATE: 10/31/22

GS2.01
© The Martin Architectural Group, P.C.