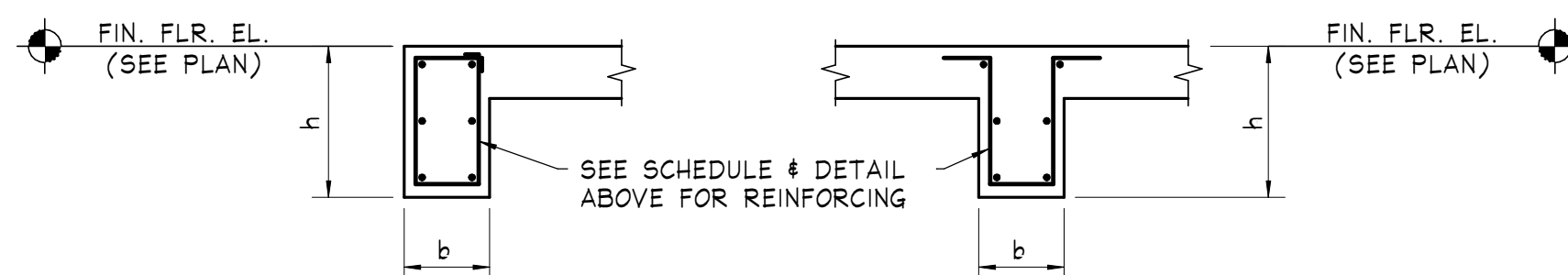
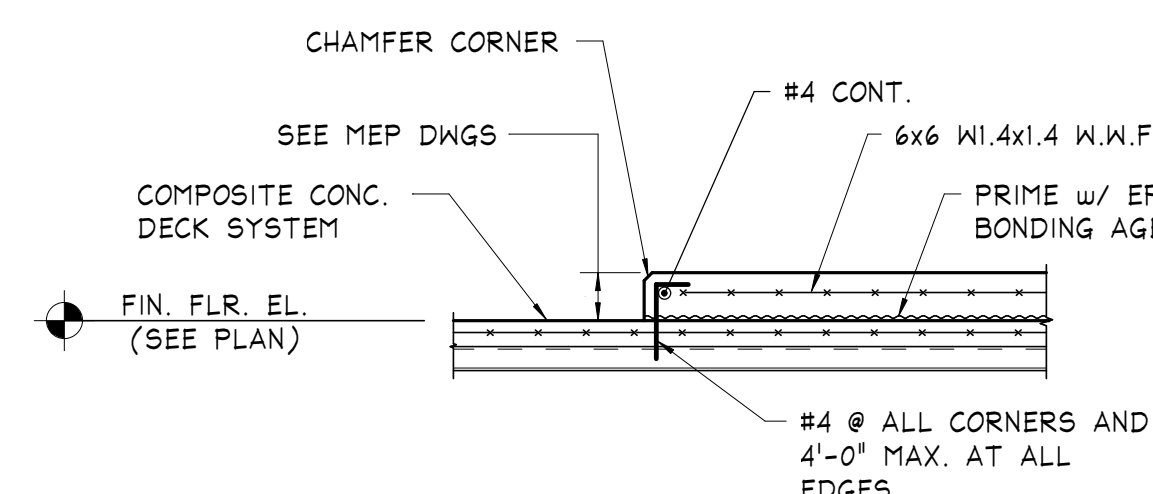
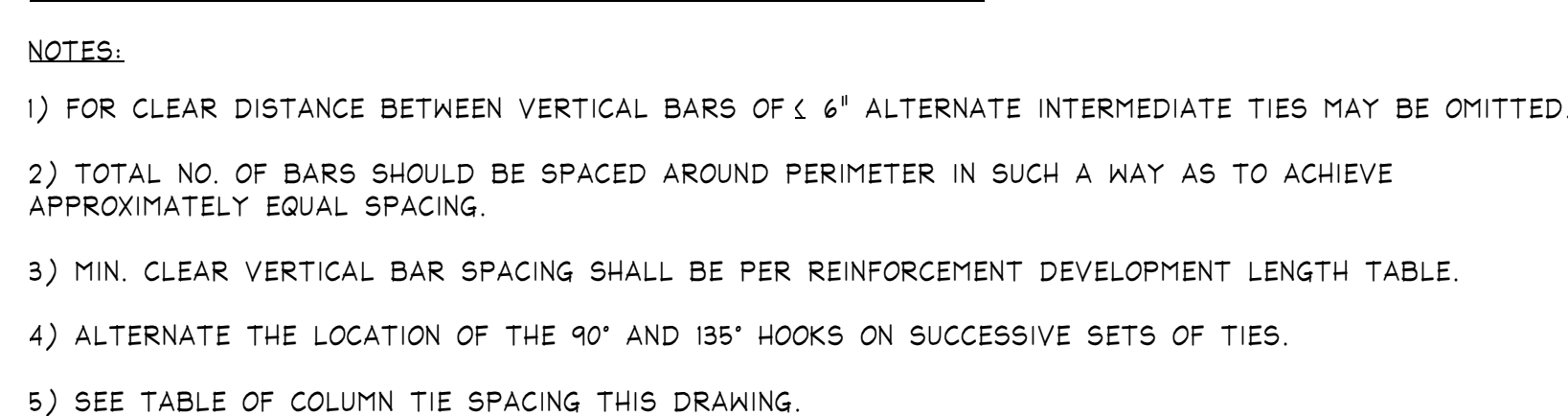
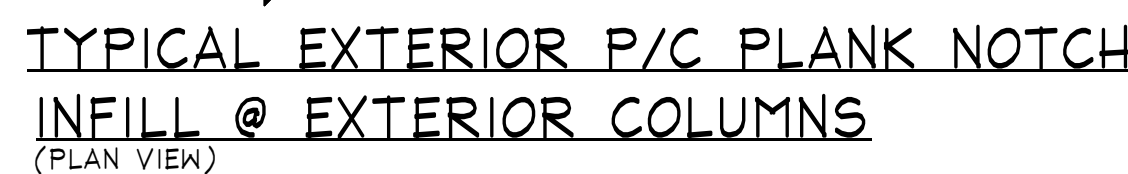


NOTES:
1) CONCRETE SIDE COVER ON BARS $\geq 2.5"$.
2) FOR EPOXY-COATED BARS, MULTIPLY TABULATED VALUES BY 1.3.

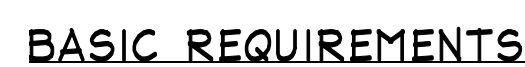


NOTES:

- 1) Ld IS PER TABLES FOR DEVELOPMENT LENGTH.
- 2) SEE BEAM SCHEDULES FOR SIZE & NUMBER OF TOP BARS, BOTTOM BARS & STIRRUPS.
- 3) IF BEAM IS MORE THAN 6" WIDER THAN COLUMN ON EITHER SIDE, PROVIDE STIRRUPS OVER COLUMN.
- 4) CONTINUOUS TOP BARS MAY HAVE A CLASS 'A' LAP SPLICE (LAP=Ld) AT MIDSPAN OF BEAM. CONTINUOUS BOTTOM BARS MAY HAVE A CLASS 'A' LAP SPLICE (LAP=Ld) AT MIDDLE OF SUPPORT.
- 5) NOT MORE THAN 50% OF BOTTOM BARS MAY BE TERMINATED 1/8L FROM FACE OF EACH SUPPORT. PROVIDE 1/4 OF THE GREATER OF THE BOTTOM LEFT OR BOTTOM RIGHT BARS BUT A MINIMUM OF (2) BARS, MUST BE CONTINUOUS.
- 6) LAP SPlicing OF TOP OR BOTTOM BARS MUST BE PLACED IN MULTIPLE LAYERS IF NOTED IN SCHEDULE. PROVIDE "I" CLEAR BETWEEN LAYERS.
- 7) 1/6 OF THE GREATER OF THE TOP LEFT OR TOP RIGHT BARS, BUT MINIMUM OF (2) BARS, MUST BE CONTINUOUS.



(COORDINATE LOCATION w/ ARCH./M.E.P. DRAWINGS)



TYPICAL SLAB DROP DETAIL
(1 1/2" DROP < D-2")



NOTES:

- 1) SEE PLANS, SECTIONS AND SCHEDULES FOR STEEL MEMBER SIZES.
- 2) SEE "TYPICAL DETAIL @ BRICK SHELF" FOR CONNECTION INFORMATION REGARDING ANGLE, CHANNEL & BRACE.
- 3) STEEL BRACES NOT SHOWN FOR CLARITY.



SECTION @ ELEVATOR SILL



TYPICAL DETAIL @ FULL HEIGHT
STUDS w/ BRICK VENEER

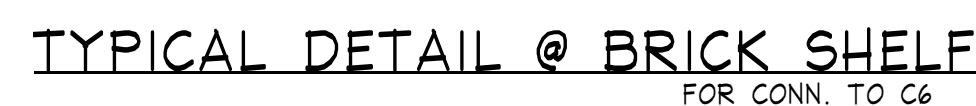
BRIK TIE:
SEE ARCH. AS MINIMUM, PROVIDE
HORIZONTAL BURNARD W/ SEAT
VEENER ANCHOR SYSTEM W/ FOAM-SEAL
AND VEE-TIE (GALV.) @ 16" o/c.

SCREWS:
ALL SCREWS TO BE POLYMER COATED
SCREWS (2 PER TIE).

HEADED STUDS:
PROVIDE 1/2" x 6" HEADED STUDS
@ 2'-0" o/c WELDED TO POUR STOP.

POUR STOP ALIGNMENT/TOLERANCE:
POUR STOP ANGLE TO BE SHIPPED LOS
AND ALIGNED IN FIELD TO MAXIMUM
TOLERANCE OF 1/16" PER FOOT.
VERT. LEG OF POUR STOP TO BE SET
PLUMB TO MAX. TOLERANCE OF 1/16".

SLIDE CLIPS:
ALL SLIDE CLIPS TO BE SUPER STOP
DEFLECTION CLIPS (DC) MODEL DC-850
MANUFACTURED BY SUPER STOP
BUILDING PRODUCTS, INC.

[illegible]

MARK	REVISIONS	DATE
<p>ALL DIMENSIONS AND RELATIONSHIPS MUST BE VERIFIED BY CONTRACTOR. THE ARCHITECT IS TO BE NOTIFIED OF ANY DISCREPANCIES BEFORE PROCEEDING WITH THE CONSTRUCTION. DO NOT SCALE FROM DRAWINGS.</p>		

PROJECT #:	135
FILENAME:	
DRAWN:	Author
CHECKED:	Checker
DATE:	06/18/18

TYPICAL FRAMING DETAILS

DRAWING

ISSUED FOR CONSTRUCTION
10/26/18

S4.1