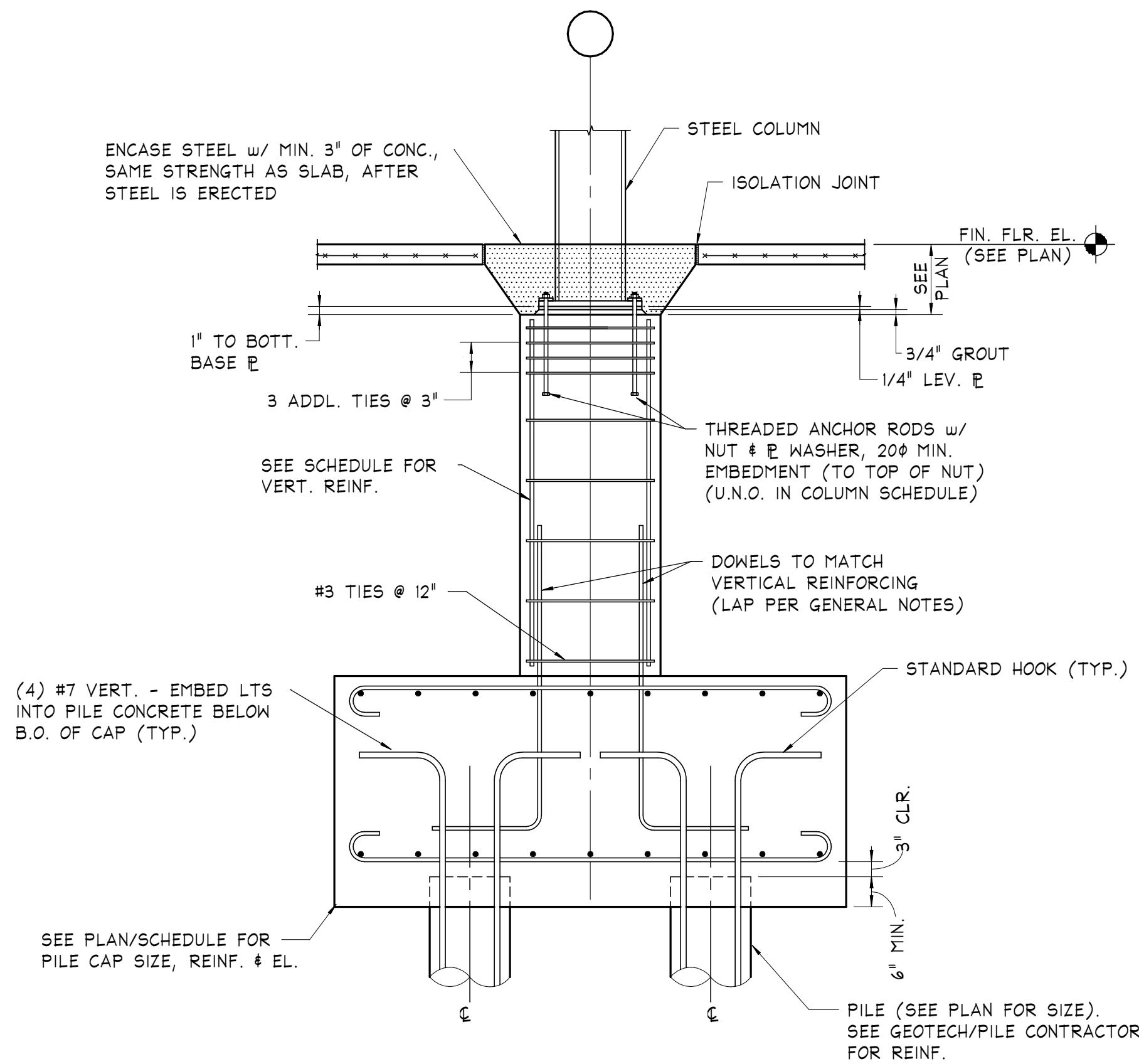
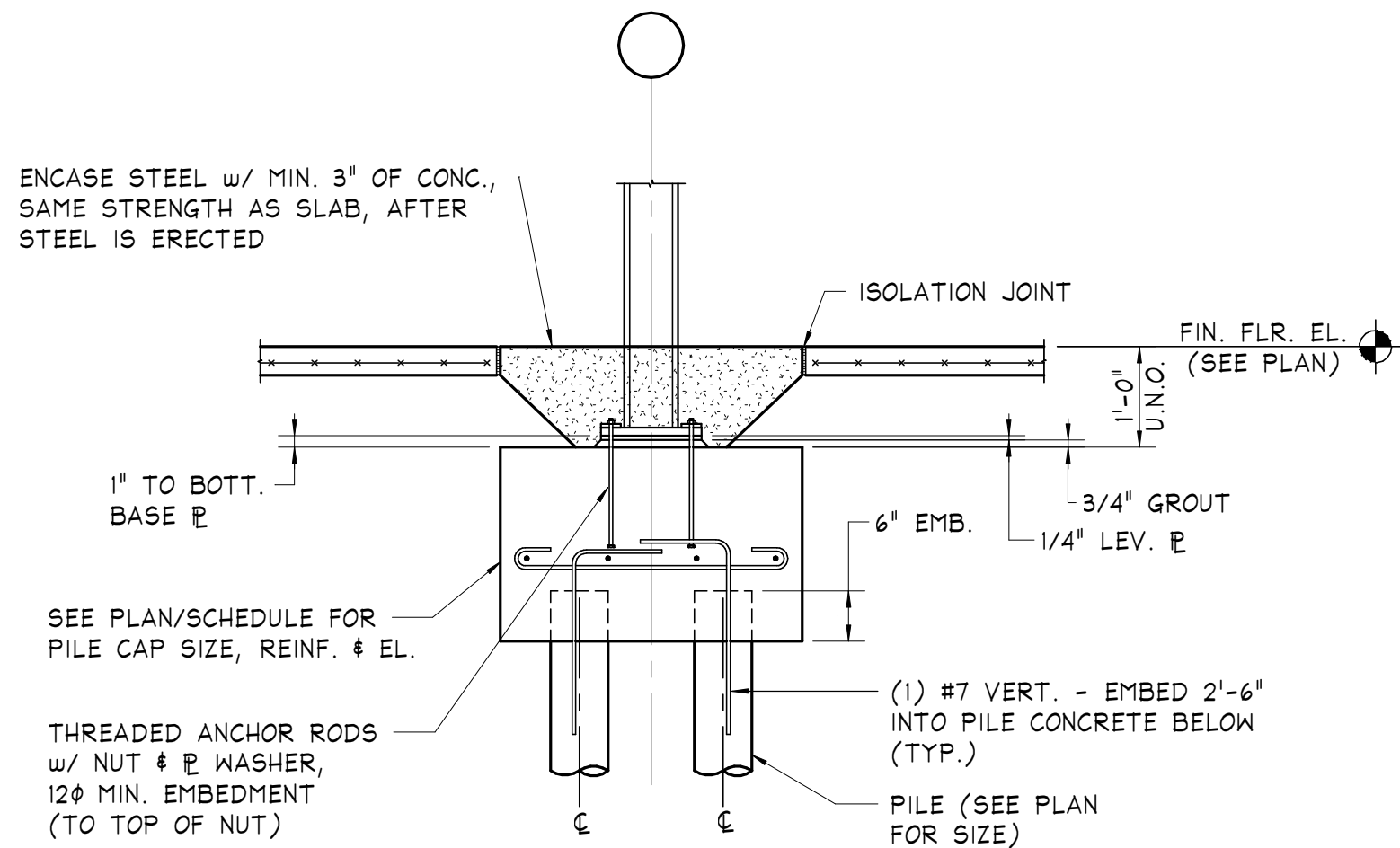


PILE CAP DETAILS

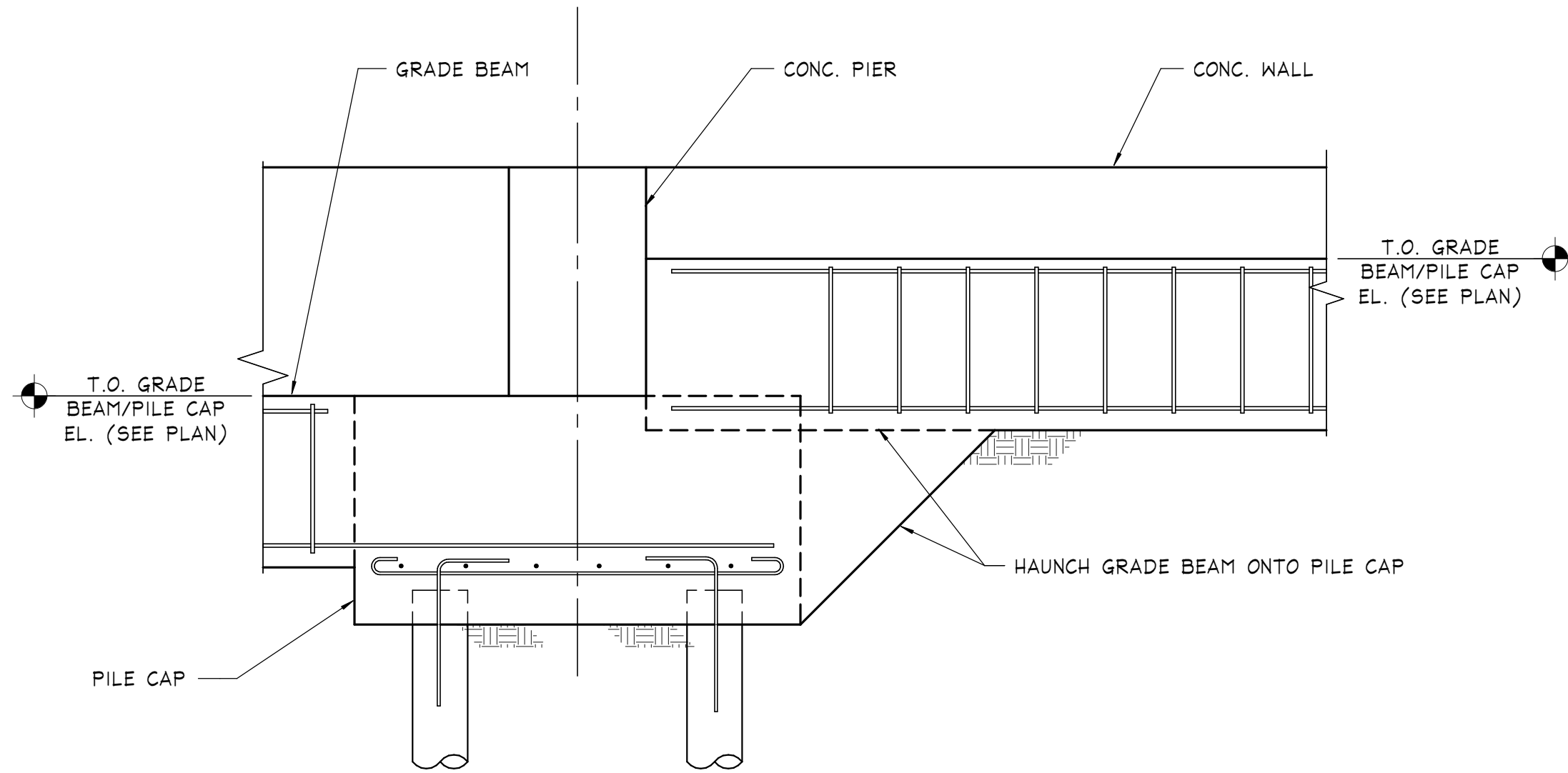
SCALE: 1/4" = 1'-0"
NOTES:
1) SEE PLAN FOR QUANTITY AND LOCATION OF ALL PILE CAPS.
2) "D" INDICATES DEPTH OF PILE CAP.
3) SEE SPECIFIC PILE CAP TYPE FOR REQUIRED REINFORCING. ALL BARS TO END WITH STANDARD 180° HOOK, EACH END.
4) CENTER TO CENTER PILE SPACING SHALL BE 3'-0" MIN.
5) MINIMUM DISTANCE FROM CENTER OF PILE TO EDGE OF CAP TO BE 1'-9".
6) ALL PILES TO BE PER GEOTECHNICAL ENGINEER'S SPECIFICATIONS.



TYPICAL COLUMN WITH PIER PILE CAP DETAIL



TYPICAL INTERIOR PILE CAP DETAIL



TYPICAL STEP IN GRADE BEAM ELEVATION DETAIL

RIVERHOUSE AT Odette's

274 SOUTH RIVER ROAD
NEW HOPE, PA 18938

OWNER/ OPERATOR:
GATEWAY TO NEW HOPE, LLC
274 South River Road
New Hope, PA 18938

ARCHITECT:
STOKES ARCHITECTURE
2103 Sansom Street
Philadelphia, PA 19103
tel: (215) 523-9190

INTERIOR DESIGNER
BALONGUE DESIGN INC
707 Mantonford Road
Villanova, PA 19085
tel: (610) 525-7593
fax: (610) 525-7594

CIVIL ENGINEER:
VAN CLEEF ENGINEERING
ASSOCIATES, LLC
501 North Main Street
Doylestown, PA 18901
tel: (215) 345-1876
fax: (215) 345-1730

STRUCTURAL ENGINEER:
O'DONNELL & NACCARATO
701 Market Street Suite 6000
Philadelphia, PA 19106
tel: (215) 925-3788
Project No. 0411.0046.00

MEP ENGINEER:
WICK FISHER WHITE
111 S. Independence Mall East Suite 400
Philadelphia, PA 19106
tel: (215) 627-0200
fax: (215) 627-8540

LIGHTING DESIGNER
BRIAN ORTER LIGHTING DESIGN LLC
227 W. 29th St 8th Floor
New York, NY 10001
tel: (646) 502-7568

STOKES.
ARCHITECTURE + DESIGN
STOKESARCH.COM

SEAL

1	Foundation Revision	11/12/18
MARK	REVISIONS	DATE

ALL DIMENSIONS AND RELATIONSHIPS MUST BE VERIFIED BY CONTRACTOR. THE ARCHITECT IS TO BE NOTIFIED OF ANY DISCREPANCIES BEFORE PROCEEDING WITH THE CONSTRUCTION. DO NOT SCALE FROM DRAWINGS.

PROJECT #:	1351
FILENAME:	Author
DRAWN:	Checker
CHECKED:	08/18/18
DATE:	

CONSTRUCTION SET

TYPICAL PILE CAP DETAILS

DRAWING

S3.1

ISSUED FOR CONSTRUCTION
10/26/18