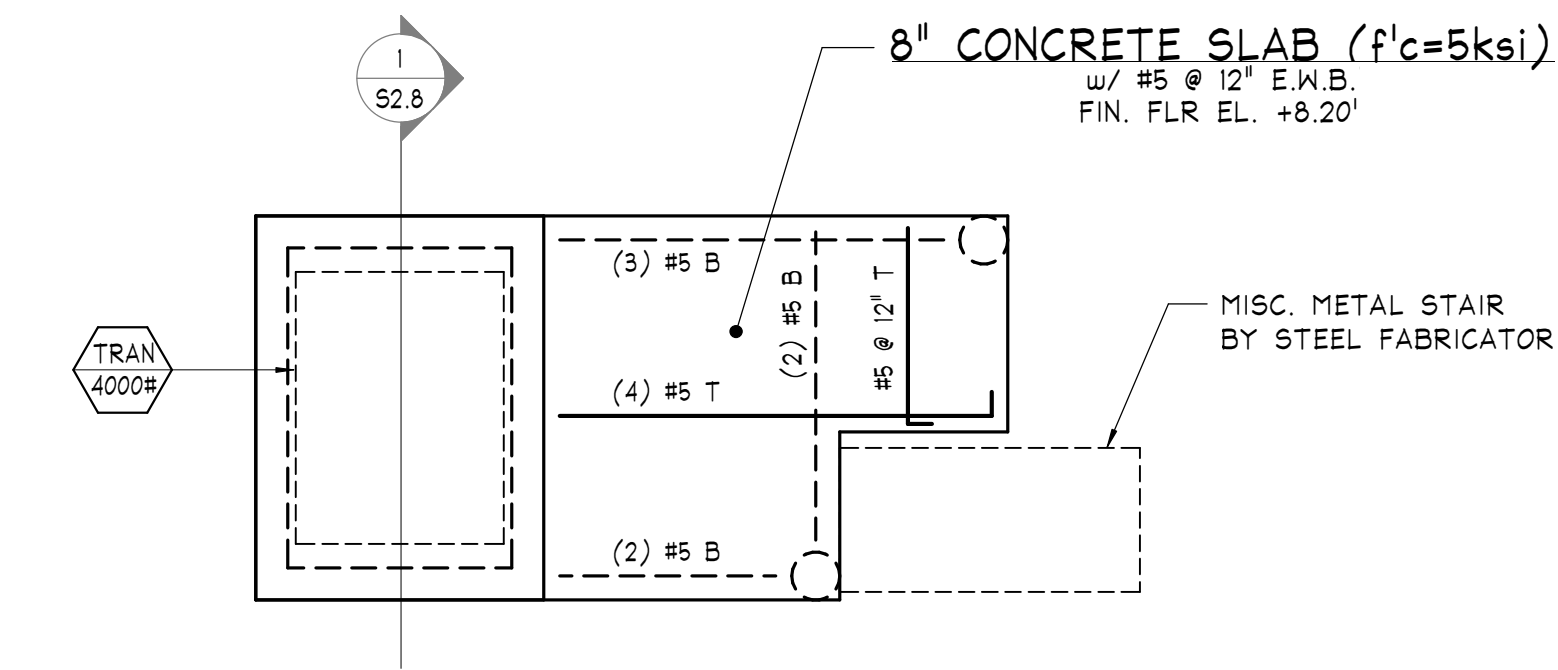
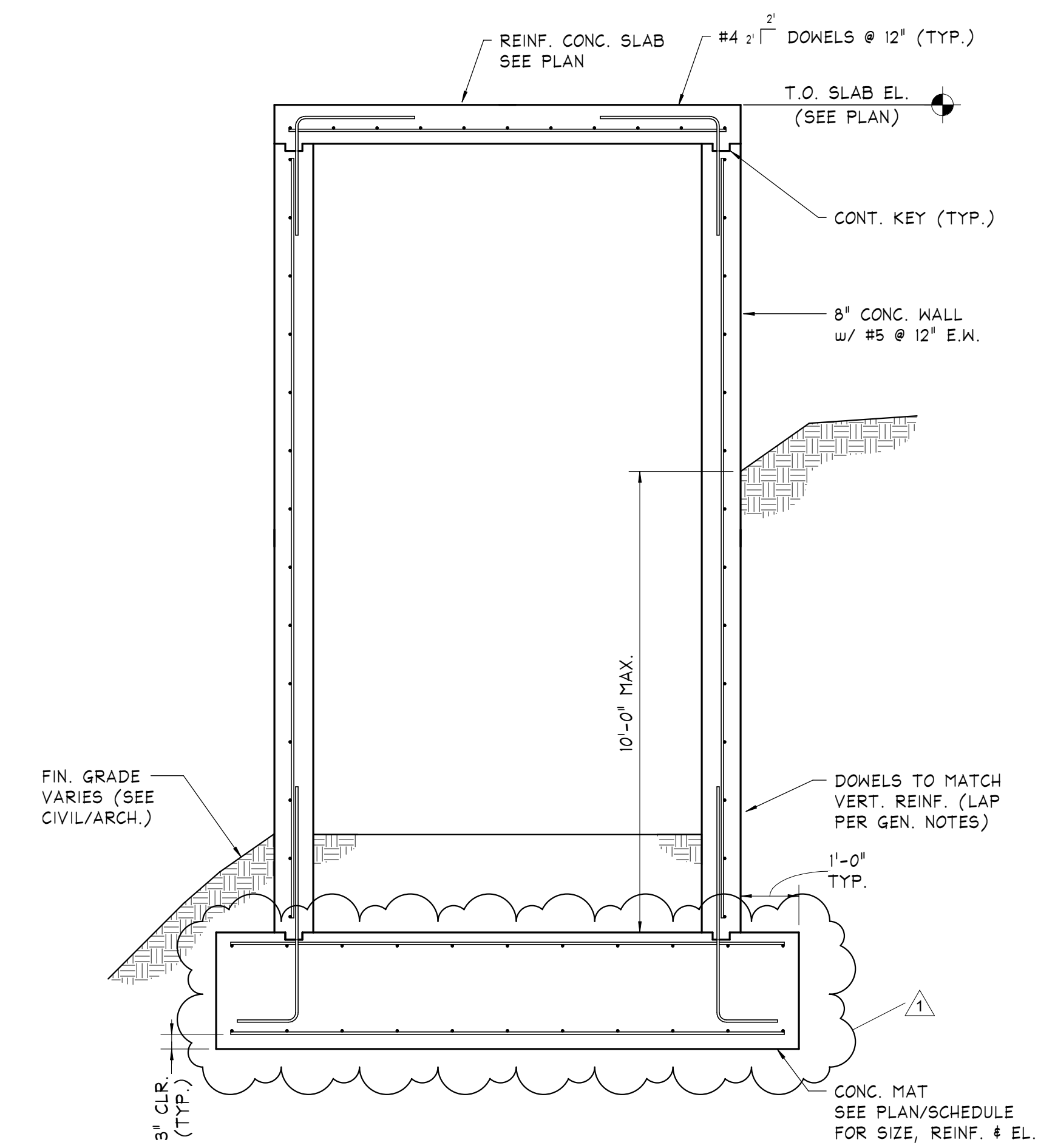


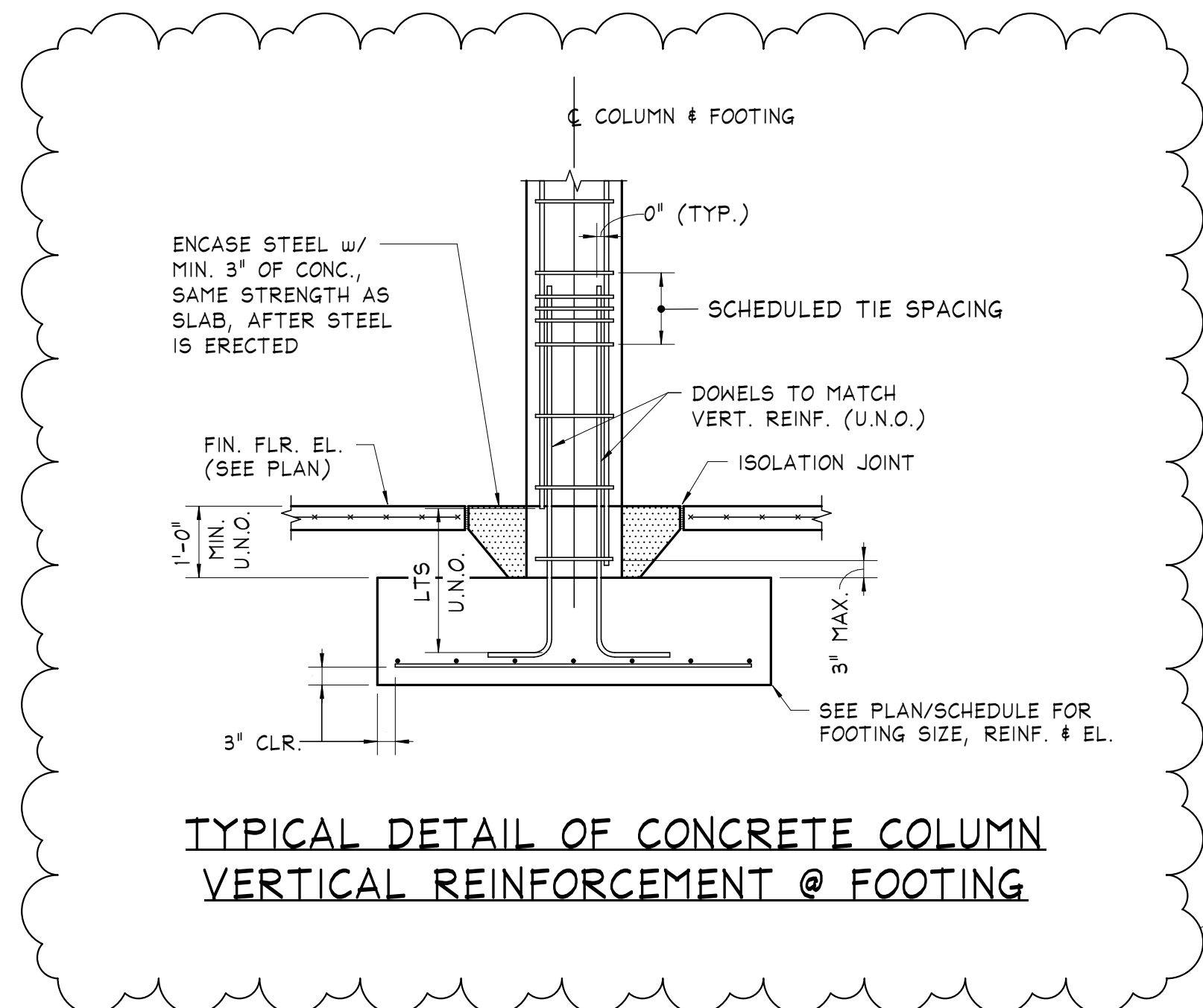
TRANSFORMER VAULT FOUNDATION PLAN
 SCALE: 1/4" = 1'-0"
 NOTES:
 1) SEE PLAN FOR FINISHED FLOOR ELEVATION RELATIVE TO DATUM ELEVATION 0.00' (ACTUAL ELEVATION 61.0'). SEE ARCHITECTURAL DOCUMENTS FOR ALL SLOPES AND VARIANCES FROM 0.00'.
 2) PERFORM ALL SITE PREPARATION AND EXCAVATION WORK IN STRICT ACCORDANCE WITH THE SOILS REPORT PREPARED BY EARTH ENGINEERING INC., DATED OCTOBER 24, 2018 (EEI PROJ. No. 29672.00). BOTTOM OF FOOTINGS SHALL BEAR ON SUBGRADE CAPABLE OF SAFELY SUPPORTING 2500 PSF PER THE GEOTECHNICAL REPORT.
 3) SUBGRADE OF ALL FOOTINGS MUST BE INSPECTED UNDER THE SUPERVISION OF AND APPROVED BY A REGISTERED SOILS ENGINEER BEFORE PLACING ANY CONCRETE. APPROVAL IN WRITING MUST INDICATE THE SOIL IS ADEQUATE TO SAFELY SUSTAIN SPECIFIED SOIL BEARING PRESSURE.
 4) SEE ARCHITECTURAL DRAWINGS FOR DIMENSIONS NOT INDICATED.
 5) (---) INDICATES TOP OF FOUNDATION ELEVATION, UNLESS NOTED OTHERWISE.
 6) 'F50' INDICATES 5'-0"x5'-0"x16" CONCRETE FOOTING w/ (5) #5 E.W.B.
 7) 'C11' INDICATES 12"x14" CONCRETE COLUMN w/ (6) #5 VERT. AND (3) TIES @ 12" PROVIDE DOWELS INTO FOUNDATIONS TO MATCH VERTICAL REINFORCING.



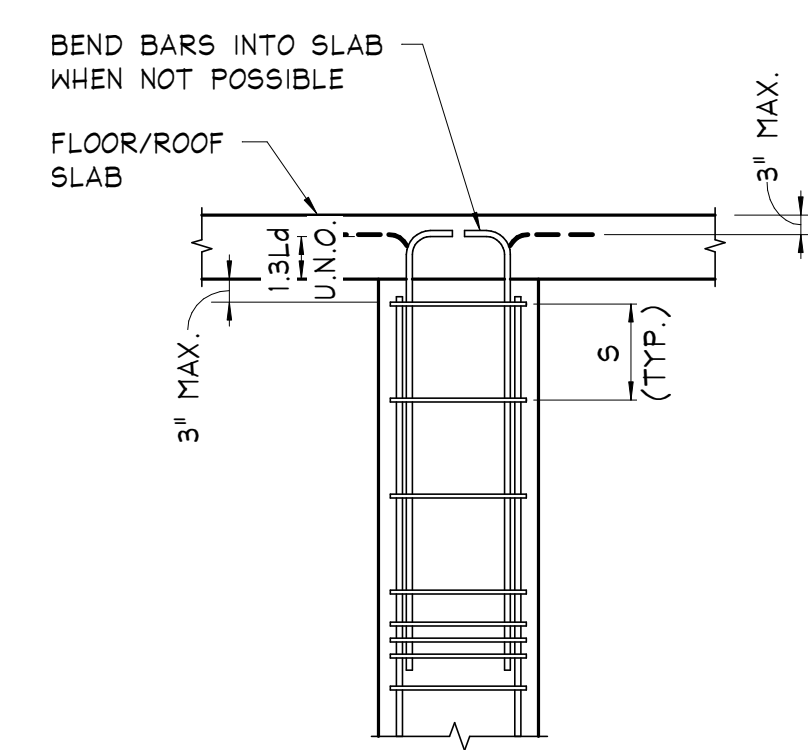
TRANSFORMER VAULT FRAMING PLAN
 SCALE: 1/4" = 1'-0"
 NOTES:
 1) SEE PLAN FOR TOP OF SLAB ELEVATION RELATIVE TO DATUM ELEVATION 0.00'.
 2) --- INDICATES ADD'L BOTTOM REINFORCING.
 3) ——— INDICATES TOP REINFORCING.



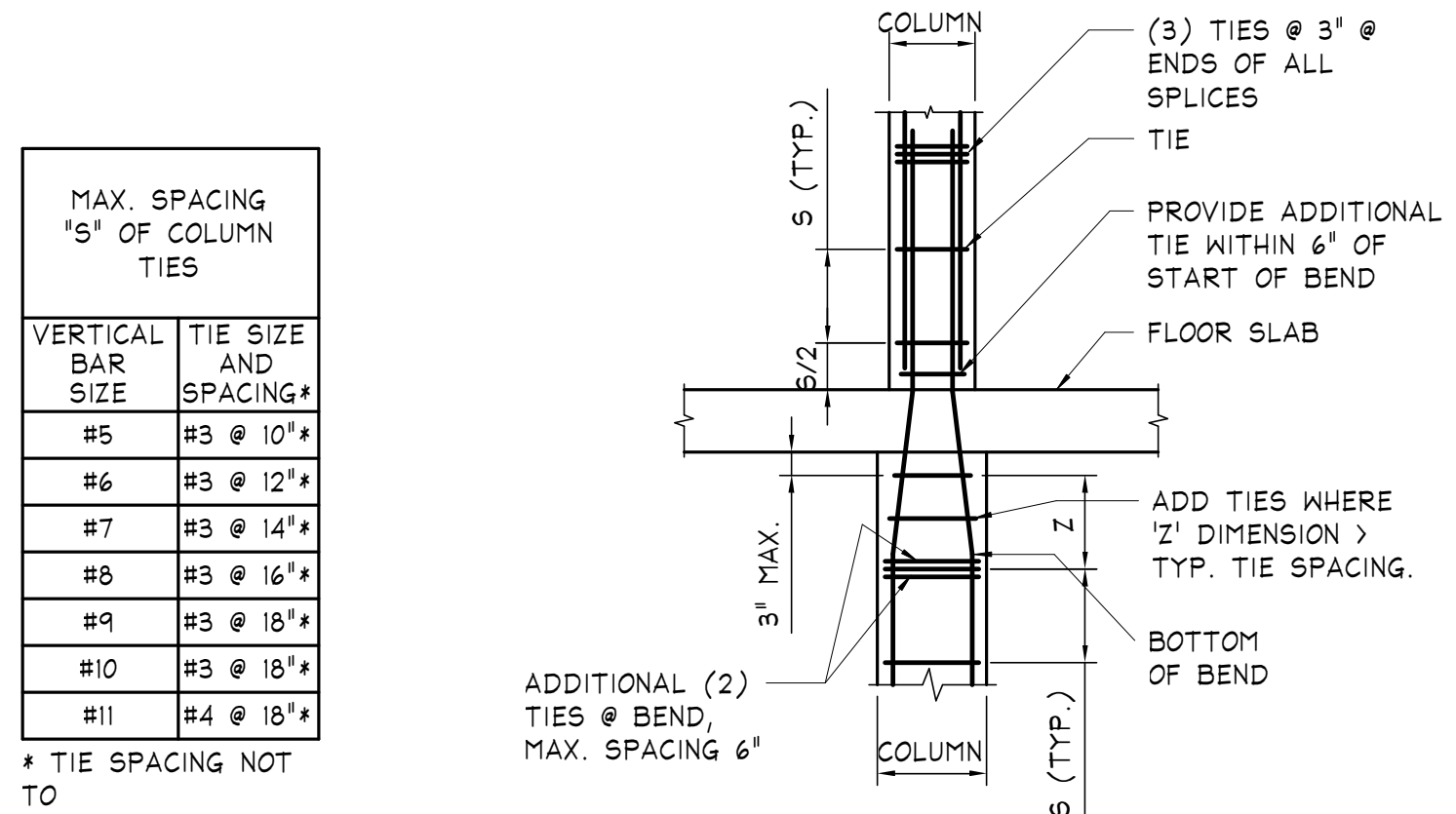
Section 1 S2.8



TYPICAL DETAIL OF CONCRETE COLUMN VERTICAL REINFORCEMENT @ FOOTING

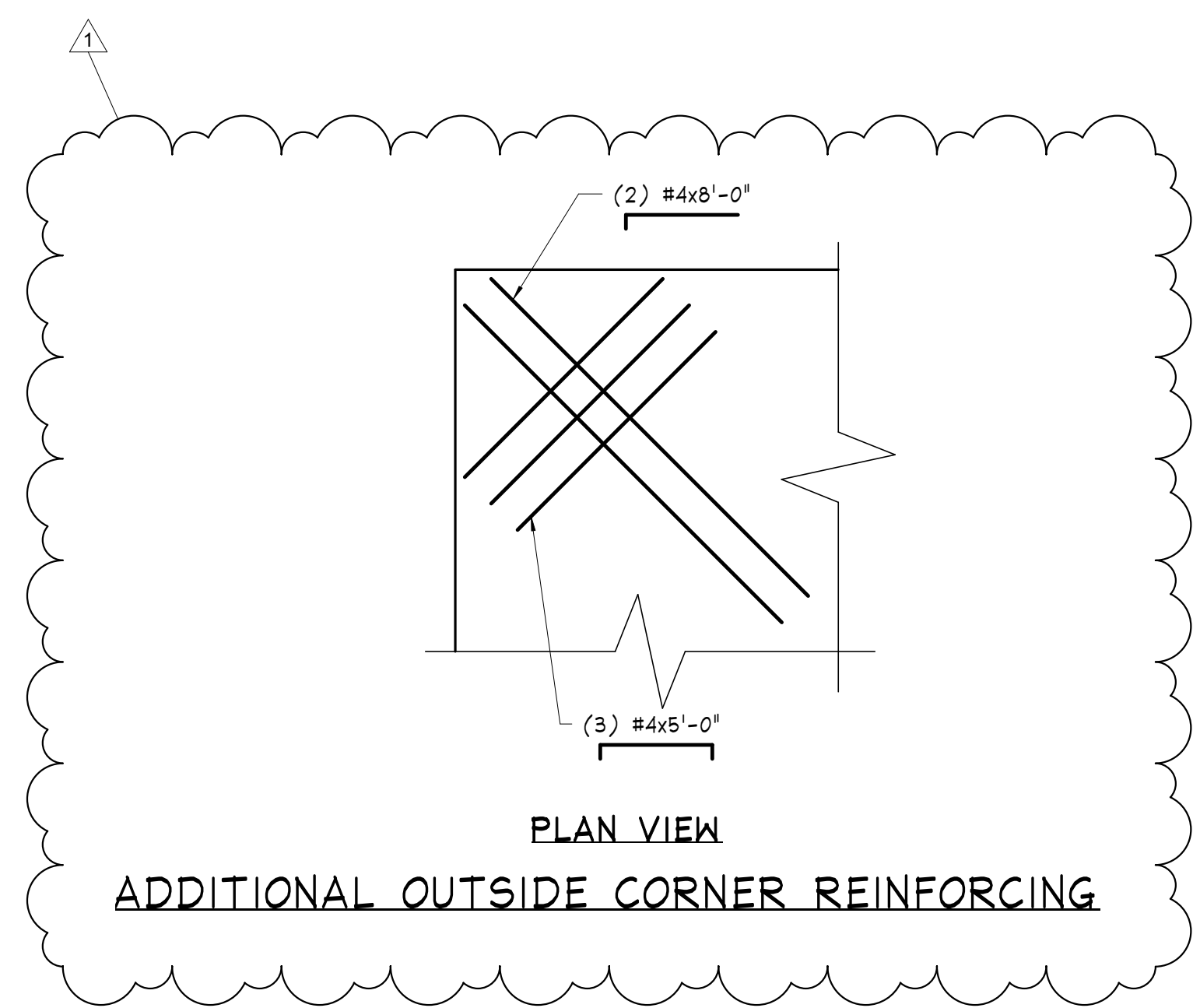


TYPICAL DETAIL OF CONCRETE COLUMN REINFORCEMENT AT TOP OF COLUMN

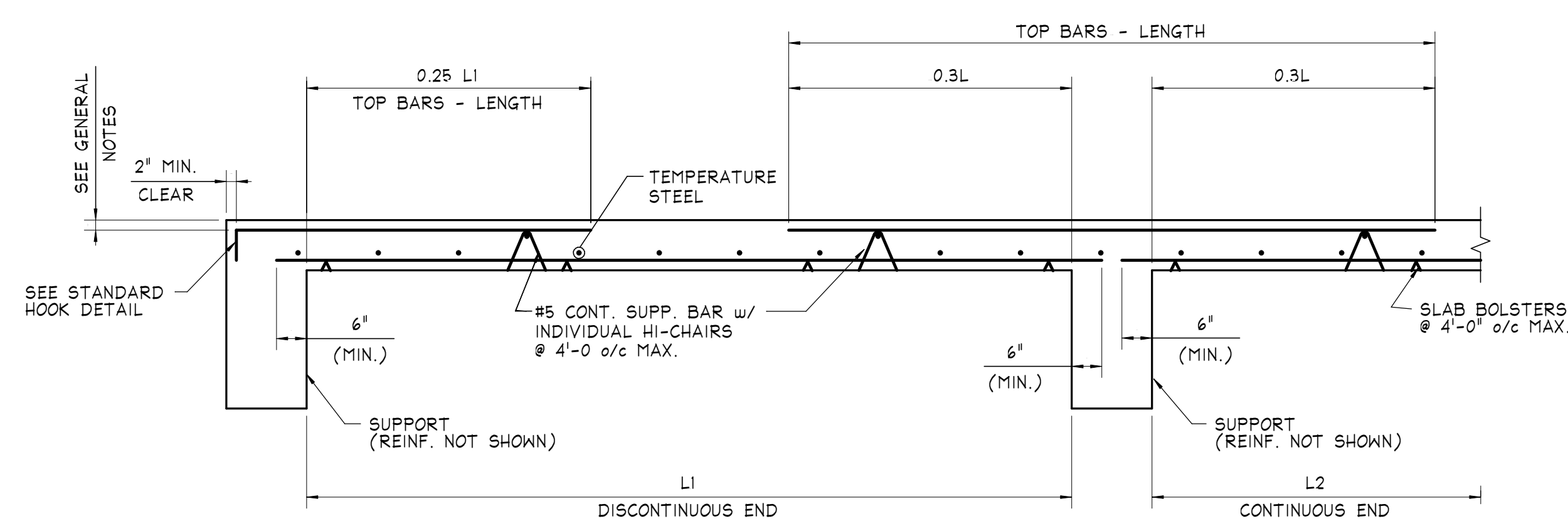


TYPICAL CONCRETE COLUMN TIE REINFORCING DETAIL

NOTES:
 1) SIZE AND SPACING OF INTERMEDIATE TIES SHALL BE THE SAME AS TABULATED ABOVE UNLESS NOTED OTHERWISE ON COLUMN SCHEDULE.
 2) IF BEAMS FRAME FROM FOUR DIRECTIONS INTO COLUMN WITH TOP ELEVATIONS EQUAL, TIES MAY BE TERMINATED NOT MORE THAN 3" BELOW LOWEST REINFORCING IN THE SHALLOWEST BEAM.
 3) SEE TYPICAL CONCRETE COLUMN DETAIL FOR TIE CONFIGURATIONS.
 4) SEE TYPICAL DETAIL OF VERTICAL CONCRETE COLUMN REINFORCEMENT FOR ADDITIONAL INFORMATION.



PLAN VIEW ADDITIONAL OUTSIDE CORNER REINFORCING



TYPICAL CONCRETE ONE-WAY SLAB DETAIL

RIVERHOUSE AT Odette's

274 SOUTH RIVER ROAD
NEW HOPE, PA 18938

OWNER/ OPERATOR:
GATEWAY TO NEW HOPE, LLC
274 South River Road
New Hope, PA 18938

ARCHITECT:
STOKES ARCHITECTURE
2103 Sansom Street
Philadelphia, PA 19103
tel: (215) 523-9190

INTERIOR DESIGNER
BALONGUE DESIGN INC
707 Madsenford Road
Villanova, PA 19085
tel: (610) 525-7593
fax: (610) 525-7594

CIVIL ENGINEER:
VAN CLEEF ENGINEERING ASSOCIATES, LLC
501 North Main Street
Doylesburg, PA 18901
tel: (215) 345-1876
fax: (215) 345-1730

STRUCTURAL ENGINEER:
O'DONNELL & NACCARATO
701 Market Street Suite 6000
Philadelphia, PA 19106
tel: (215) 925-3788
Project No. 0411.0046.00

MEP ENGINEER:
WICK FISHER WHITE
111 S. Independence Mall East Suite 400
Philadelphia, PA 19106
tel: (215) 627-3200
fax: (215) 627-8240

LIGHTING DESIGNER
BRIAN ORTER LIGHTING DESIGN LLC
227 W. 29th St 8th Floor
New York, NY 10001
tel: (646) 502-7568

STOKES. ARCHITECTURE + DESIGN

STOKESARCH.COM

PROJECT #:

FILENAME:

DRAWN:

CHECKED:

DATE:

1351

Author

Checker

04/16/15

CONSTRUCTION SET

TRANSFORMER VAULT PLANS AND SECTIONS

DRAWING

ISSUED FOR CONSTRUCTION

10/26/18