

# RIVERHOUSE AT Odette's

274 SOUTH RIVER ROAD  
NEW HOPE, PA 18838

OWNER/ OPERATOR:  
GATEWAY TO NEW HOPE, LLC  
274 South River Road  
New Hope, PA 18838

ARCHITECT:  
STOKES ARCHITECTURE  
2103 Sansom Street  
Philadelphia, PA 19103  
tel: (215) 523-9190

INTERIOR DESIGNER:  
BALONGUE DESIGN INC  
707 Marlborough Road  
Villanova, PA 19085  
tel: (610) 525-7593  
fax: (610) 525-7594

CIVIL ENGINEER:  
VAN CLEEF ENGINEERING  
ASSOCIATES, LLC  
501 North Main Street  
Doylestown, PA 18901  
tel: (215) 345-1876  
fax: (215) 345-1730

STRUCTURAL ENGINEER:  
O'DONNELL & NACCARATO  
111 S. Independence Mall East Suite 950  
Philadelphia, PA 19106  
tel: (215) 927-8200  
fax: (215) 925-3788

MEP ENGINEER:  
WICK FISHER WHITE  
111 S. Independence Mall East Suite 400  
Philadelphia, PA 19106  
tel: (215) 927-8200  
fax: (215) 927-8240

LIGHTING DESIGNER:  
BRIAN ORTER LIGHTING DESIGN LLC  
227 W. 29th St 8th Floor  
New York, NY 10001  
tel: (646) 502-7568

**STOKES.**  
ARCHITECTURE + DESIGN  
STOKESARCH.COM

SEAL

MARK	REVISIONS	DATE
1	90% PRICING SET	06.18.2018
2	PERMIT SET	07.25.2018
3	COMMISSIONING COMMENTS	01.23.2019
	ISSUE FOR CONSTRUCTION	02.28.2019

ALL DIMENSIONS AND RELATIONSHIPS MUST BE VERIFIED BY CONTRACTOR. THE ARCHITECT IS TO BE NOTIFIED OF ANY DISCREPANCIES BEFORE PROCEEDING WITH THE CONSTRUCTION. DO NOT SCALE FROM DRAWINGS.

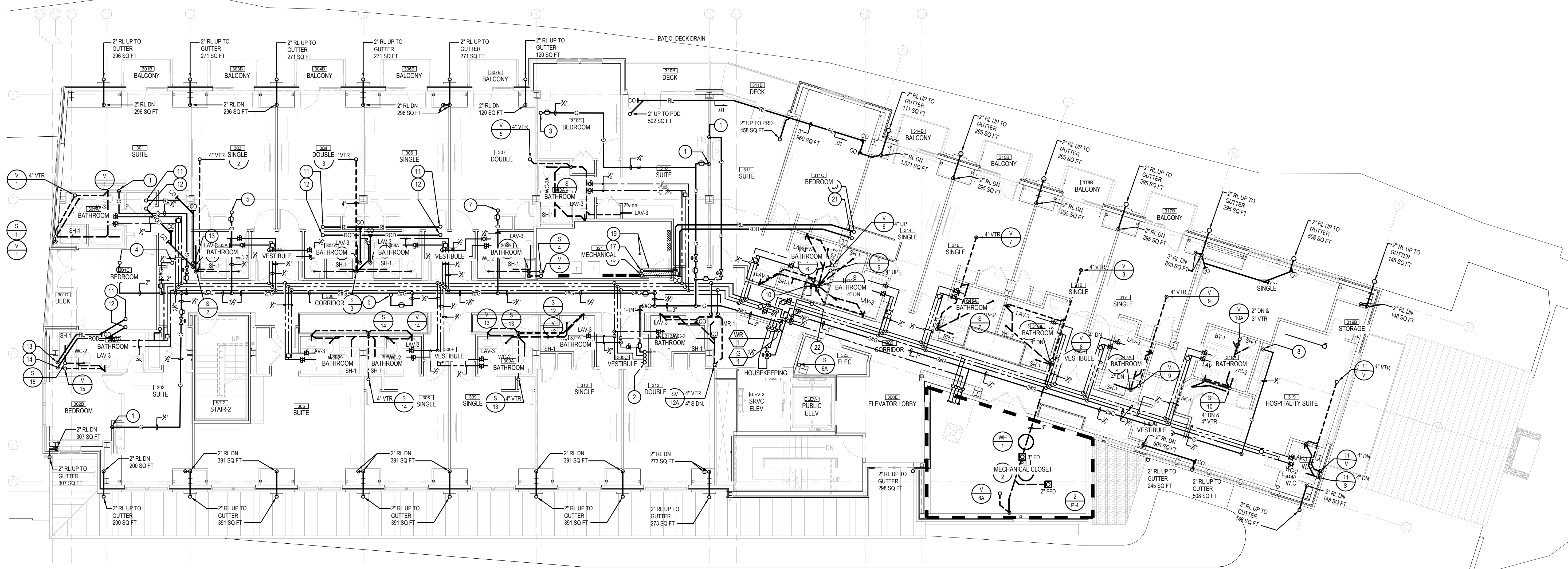
PROJECT #: 140145.001  
FILENAME: WFW  
CHECKED: WFW  
DATE: 07/25/18

ISSUE FOR CONSTRUCTION  
02-28-2019

THIRD FLOOR  
PLAN-PLUMBING WORK

DRAWING

P-4



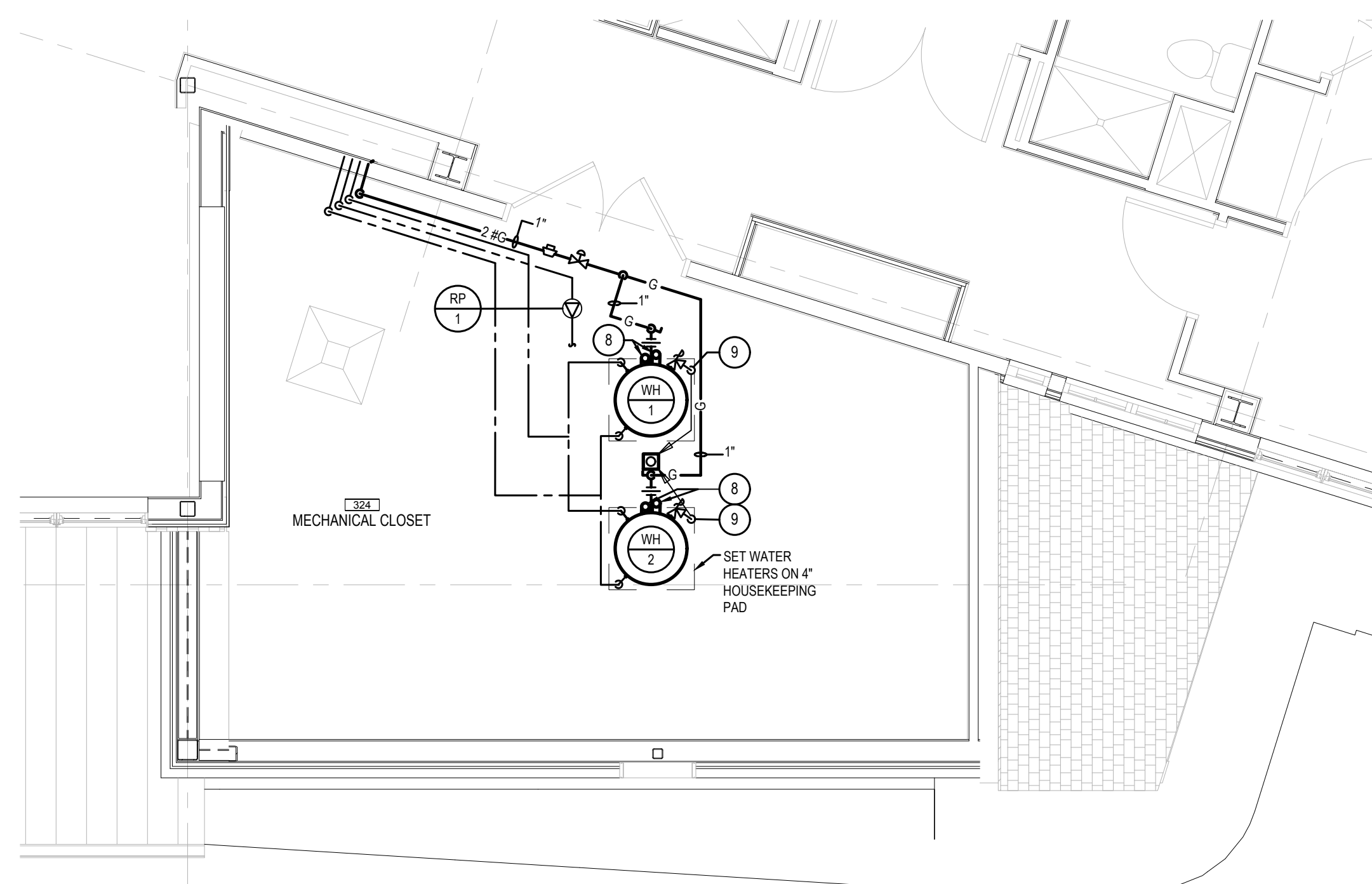
## 1 THIRD FLOOR PLAN — PLUMBING WORK SCALE : 1/8" = 1'-0"

### NOTES :

- 1- REFER TO DRAWING MPE-1 FOR HVAC, PLUMBING/FIRE PROTECTION & ELECTRICAL GENERAL NOTES, ABBREVIATIONS, LEGENDS & DRAWING LIST.

### DRAWING NOTES :

- 1/2" LP GAS DN TO FIRE PLACE
- 2-1/2" C.I. 1.125x1/2" WVR & 1-1/4" 2KG UP- REFER TO PLAN 1P-S.1 FOR CONTINUATION
- 3/4" LP GAS UP TO PENTHOUSE FIRE PLACE
- 2" 2 # GAS UP TO GENERATOR, REFER TO PLAN 1P-S FOR CONTINUATION
- 3/4" 2 # GAS UP TO RTU2, REFER TO PLAN 1P-S FOR CONTINUATION
- 3/4" 2 # GAS UP TO RTU1, REFER TO PLAN 1P-S FOR CONTINUATION
- 3/4" 2 # GAS UP TO RTU3, REFER TO PLAN 1P-S FOR CONTINUATION
- 3" Ø INLET & EXHAUST FROM WATER HEATER TO CONCENTRIC VENT TERMINATION FITTING ABOVE & THEN THRU ROOF
- EXTEND RELIEF VALVE DISCHARGE (FULL SIZE) TO FLOOR DRAIN
- FOR CONTINUATION OF PIPING REFER TO PENTHOUSE PLAN SAN. PIPING WORK 1P-S.1.
- 2" UP TO RD (478 SQ FT) REFER TO PLAN 1P-S FOR LOCATION
- 2" UP TO ROD (478 SQ FT) REFER TO PLAN 1P-S FOR LOCATION
- 2" RD DN (478 SQ FT) REFER TO PLAN 1P-3 FOR CONTINUATION
- 2" RD DN (478 SQ FT) REFER TO PLAN 1P-3 FOR CONTINUATION
- 3" RD DN (856 SQ FT) REFER TO PLAN 1P-3 FOR CONTINUATION
- 3" RD DN (856 SQ FT) REFER TO PLAN 1P-3 FOR CONTINUATION
- 2" RD UP (895 SQ FT) REFER TO PLAN 1P-S FOR CONTINUATION
- 2" RD DN (895 SQ FT) REFER TO PLAN 1P-S FOR CONTINUATION
- INSTALL INSULATED GALVANIZED DRIP PAN BELOW RL PIPING WITHIN ELECTRICAL ROOM. EXTEND 1" HP INSULATED DRAIN FROM PAN AND CONNECT TO HP CONDENSATE DRAIN PIPING IN VICINITY.
- 3" RL UP (878 SQ FT) REFER TO PLAN 1P-3 FOR CONTINUATION. 3" RL DN (1,673 SQ FT) REFER TO PLAN 1P-3 FOR CONTINUATION.
- 3" RD UP (878 SQ FT) REFER TO PLAN 1P-3 FOR CONTINUATION. 3" RD DN (1,673 SQ FT) REFER TO PLAN 1P-3 FOR CONTINUATION.
- 1/2" DEGREE HW UP TO DISHWASHER



## 2 ENLARGED MECHANICAL ROOM PLAN SCALE : 1/4" = 1'-0"