

# RIVERHOUSE AT Odette's

274 SOUTH RIVER ROAD  
NEW HOPE, PA 18938

OWNER/ OPERATOR:  
GATEWAY TO NEW HOPE, LLC  
274 South River Road  
New Hope, PA 18938

ARCHITECT:  
STOKES ARCHITECTURE  
2103 Sansom Street  
Philadelphia, PA 19103  
tel: (215) 523-9190

INTERIOR DESIGNER:  
BALONGUE DESIGN INC  
707 Malsortford Road  
Villanova, PA 19085  
tel: (610) 525-7593  
fax: (610) 525-7594

CIVIL ENGINEER:  
VAN CLEEF ENGINEERING  
ASSOCIATES, LLC  
501 North Main Street  
Doylestown, PA 18901  
tel: (215) 345-1876  
fax: (215) 345-1730

STRUCTURAL ENGINEER:  
O'DONNELL & NACCARATO  
111 S. Independence Mall East Suite 950  
Philadelphia, PA 19106  
tel: (215) 925-3788

MEP ENGINEER:  
WICK FISHER WHITE  
111 S. Independence Mall East Suite 400  
Philadelphia, PA 19106  
tel: (215) 627-8000  
fax: (215) 627-8040

LIGHTING DESIGNER:  
BRIAN ORTER LIGHTING DESIGN LLC  
227 W. 29th St 8th Floor  
New York, NY 10001  
tel: (646) 502-7568

**STOKES.**  
ARCHITECTURE + DESIGN  
STOKESARCH.COM

SEAL

MARK	REVISIONS	DATE
3	ISSUE FOR CONSTRUCTION	02.28.2019
2	COMMISSIONING COMMENTS	01.23.2019
1	PERMIT SET	07.25.2018
1	90% PRICING SET	06.18.2018

ALL DIMENSIONS AND RELATIONSHIPS MUST BE VERIFIED BY CONTRACTOR. THE ARCHITECT IS TO BE NOTIFIED OF ANY DISCREPANCIES BEFORE PROCEEDING WITH THE CONSTRUCTION. DO NOT SCALE FROM DRAWINGS.

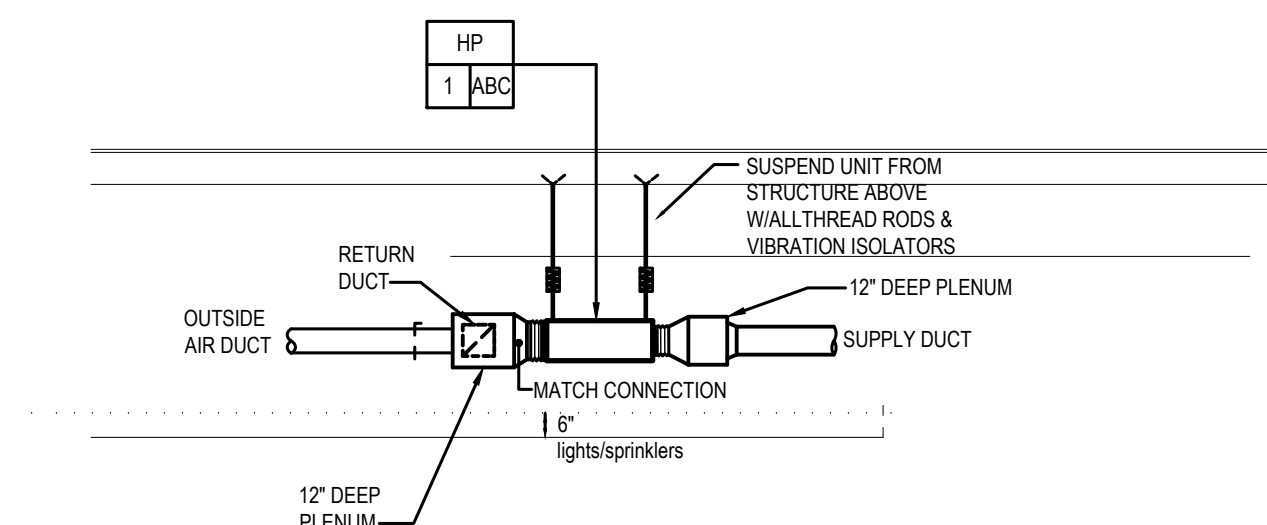
PROJECT #:	140145.001
FILENAME:	WFW
DRAWN:	WFW
CHECKED:	WFW
DATE:	07/25/18

ISSUE FOR CONSTRUCTION  
02-28-2019

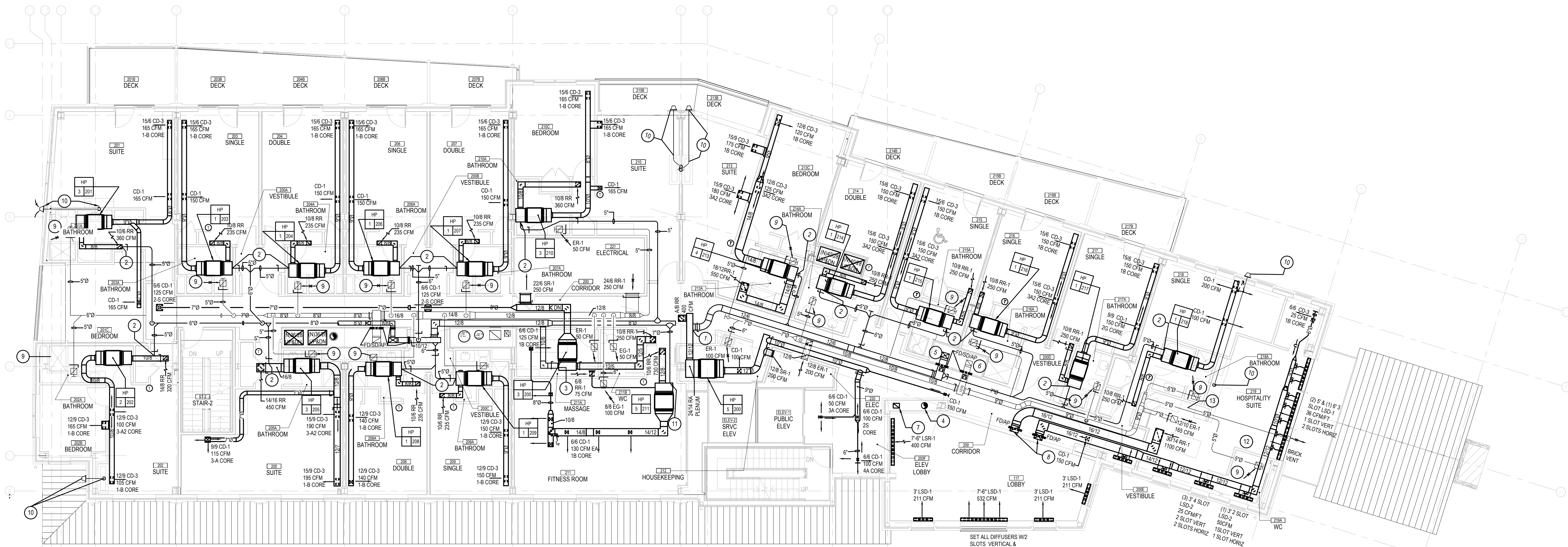
SECOND FLOOR PLAN -  
DUCTWORK

DRAWING

M-3



**HP MOUNTING DETAIL**  
SCALE : NOT TO SCALE



**SECOND FLOOR PLAN — DUCTWORK**  
SCALE : 1/8" = 1'-0"

#### NOTES :

1. REFER TO DRAWING MPE-1 FOR HVAC, PLUMBING/FIRE PROTECTION & ELECTRICAL GENERAL NOTES, ABBREVIATIONS, LEGENDS & DRAWING LIST.
2. COORDINATE FINAL AIR DEVICE LOCATIONS WITH ARCHITECTURAL REFLECTED CEILING PLAN, LIGHTING PLAN, FIRE PROTECTION AND SPRINKLERS.
3. PROVIDE COMBINATION FIRESMOKE DAMPERS IN ALL DUCTS PENETRATING RATED WALL & FLOOR ASSEMBLIES.

#### DRAWING NOTES :

1. CONNECT 126 OA DUCT TO RETURN DUCT AND BALANCE TO 300 CFM.
2. CONNECT 5'0" OA DUCT TO UNIT RETURN AIR PLENUM AND BALANCE TO 50 CFM.
3. CONNECT 106OA DUCT TO UNIT RETURN AIR PLENUM AND BALANCE TO 250 CFM.
4. X" ID DOUBLE WALL FIRE PLACE FLUE UP & DN. REFER TO PLAN 1M-2 & 1M-4 FOR CONTINUATION.
5. RTU-1A 148 OA DUCT UP. REFER TO PLAN 1M-4 FOR CONTINUATION.
6. 12'10" EA DUCT UP. REFER TO PLAN 1M-4 FOR CONTINUATION.
7. 12'9" EA DUCT UP. REFER TO PLAN 1M-4 FOR CONTINUATION.
8. 16'12" SUPPLY & RETURN DUCTS UP W/IFD IN FLOOR. REFER TO PLAN 1M-4 FOR CONTINUATION.
9. EXHAUST 50 CFM THROUGH A 68 ER-1 IN BATHROOM.
10. INSTALL FIRE PLACE DOUBLE WALL VENT PIPE FROM FIRE PLACE UNIT TO HORIZONTAL TERMINATION CAP. INSTALL CAP, FLUE & CAP FURNISHED BY GC. REFER TO ARCHITECTURAL DRAWINGS FOR DETAILS.
11. CONNECT 7'0" OA DUCT TO UNIT RETURN AIR PLENUM AND BALANCE TO 150 CFM.
12. ALL FLEX CONNECTIONS TO PLENUMS IN THIS SPACE ARE TO BE 7'0"
13. CONNECT 5'0" SS TO RANGE HOOD EXHAUST OUTLET & EXTEND DUCT TO BRICK VENT.