

\*HOOD AND NUTS TO BE SUPPLIED BY INSTALLING CONTRACTOR  
HANGING ANGLE IS PRE-FURNISHED AT FACTORY

HANGING ANGLE DETAILS

HOOD STYLE / MODEL	450 DEGREES cfm/ft.	600 DEGREES cfm/ft.	700 DEGREES cfm/ft.
CANOPY ND-2	150	200	250
CANOPY ND-2 W/ END PANELS	105	140	175
SLOPED SND-2	228	294	-
ISLAND ND-2WI	269	300	350
ISLAND ND-2I	346	422	475

ETL HOOD LISTING DETAIL

EXHAUST CFM = LENGTH OF HOOD X CFM/LIN.FT. (LOAD)  
SUPPLY CFM = EXHAUST CFM X PERCENTAGE REQUIRED  
TOTAL DUCT AREA (sq. ft.) = 144 X CFM(C)  
DUCT LENGTH = TOTAL DUCT AREA

\*CAPTIVEAIR VENTILATOR DUCT SIZES ARE CALCULATED USING AN EXHAUST VELOCITY OF 1500-1800 FPM AND A SUPPLY VELOCITY OF 1000 FPM.

CALCULATIONS UTILIZED

CAPTIVE-AIRE HOODS BUILT IN COMPLIANCE WITH:



BUILDING CODES

CAPTIVE-AIRE HOODS HAVE OPTIONAL CLEARANCE REDUCTION SYSTEMS AVAILABLE AS FOLLOWS:

MATERIAL	CLEARANCE REDUCTION SYSTEM
NON-COMBUSTIBLE	NONE REQUIRED
LIMITED-COMBUSTIBLE	3" UNINSULATED STANDOFF
COMBUSTIBLE	1" INSULATED STANDOFF

CLEARANCE TO COMBUSTIBLES

INSTALLATION

1. ALL ELECTRICAL "TIE-UP" CONNECTIONS AND RELATED INTERCONNECTIONS BY ELECTRICAL CONTRACTORS.
2. ALL PLUMBING "TIE-UP" CONNECTIONS AND RELATED INTERCONNECTIONS BY PLUMBING CONTRACTORS.
3. HANGING BRACKETS LOCATED AND WELDED AS SHOWN ON PLANS. ALL OTHER WELDER MATERIALS PROVIDED BY INSTALLING CONTRACTORS.
4. ALL CONNECTIONS FROM CAPTIVEAIR HOOD PER MECHANICAL CONTRACTORS' PLANS.
5. COOKING EQUIPMENT TO SHUT OFF IN EVENT OF FIRE.
6. EXHAUST FANS TO TURN ON IN EVENT OF FIRE.
7. ALL LIGHT FIXTURES SHOWN INSTALLED BY CAPTIVEAIR ARE FACTORY PREWIRED. INTERCONNECTIONS BETWEEN HOODS AND TO SWITCHES ARE BY ELECTRICAL CONTRACTOR.
8. LAMPS FOR LIGHT FIXTURES BY INSTALLING CONTRACTORS.
9. SEWING RESTAURANTS ARE RESPONSIBILITY OF INSTALLING CONTRACTOR.
10. INSTALLING CONTRACTORS ASSUME ALL RELATED RESPONSIBILITY FOR VERIFICATION OF DIMENSIONAL DATA CONTAINED ON THESE DOCUMENTS FOR ACCURACY, INTERPRETATION AND ADHERENCE TO CODE REQUIREMENTS IN EFFECT PRIOR TO ANY RELEASE FOR PRODUCTION OF EQUIPMENT SHOWN.

BALANCE

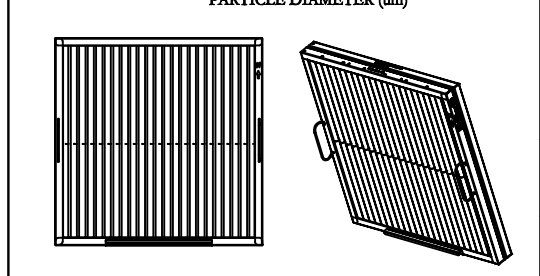
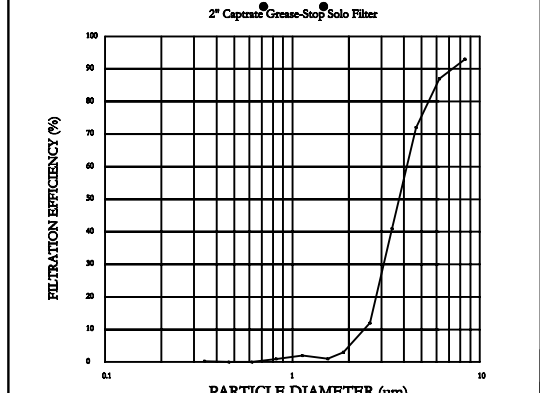
11. KITCHEN HOODS MUST BE BALANCED WITH KITCHEN.
12. KITCHEN SHALL BE NEGATIVE WITH RESPECT TO DINING AREA.
13. RESTAURANT SHALL BE POSITIVE WITH RESPECT TO AMBIENT PRESSURE.

ADDITIONAL

14. WRITTEN HOOD DIMENSIONS HAVE PRECEDENCE OVER SCALE.
15. SHOWN AND APPROPRIATE COPIES OF THIS DOCUMENT MUST BE PROVIDED BY THE FACTORY PRIOR TO COMMENCEMENT OF FABRICATION.

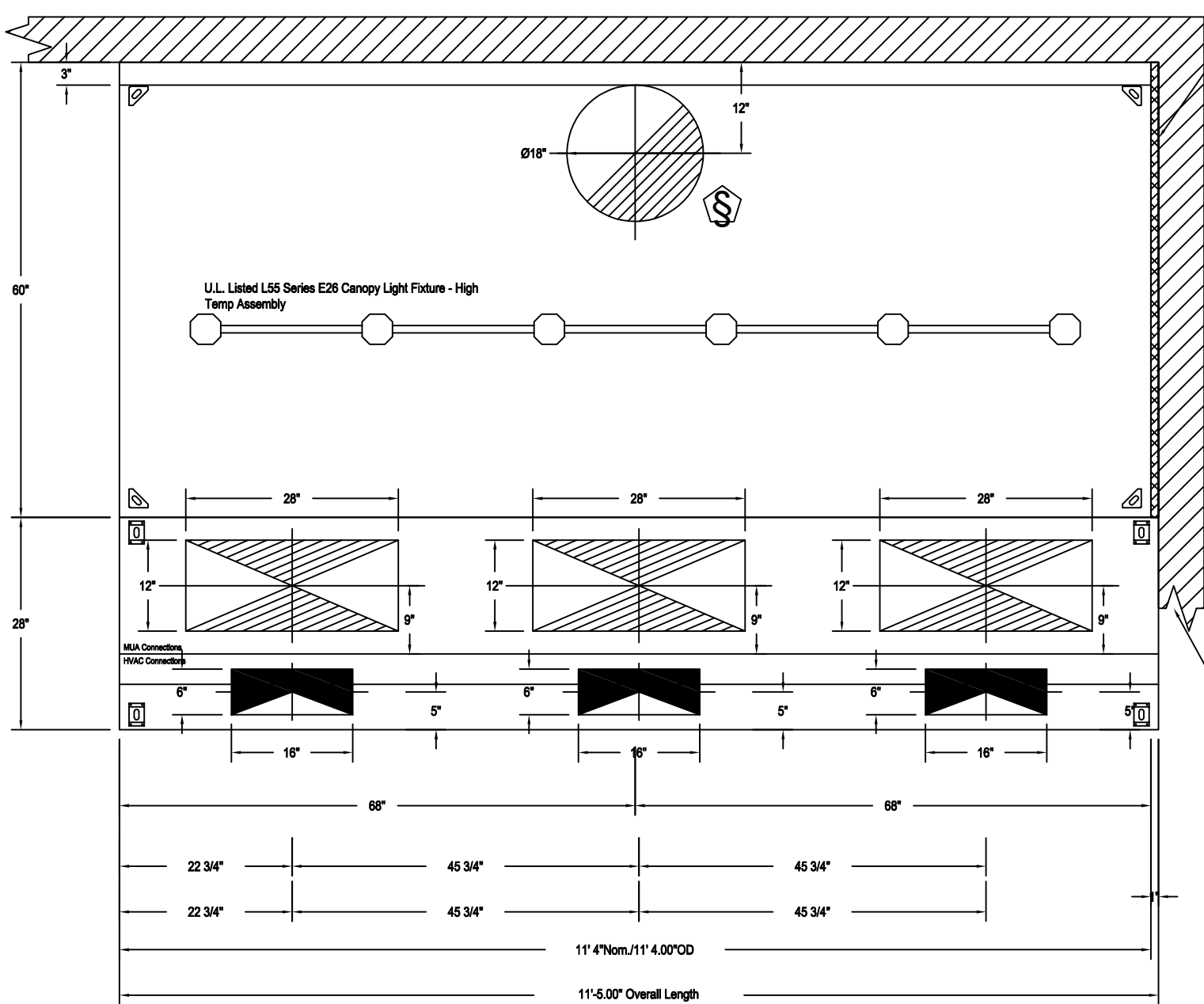
GENERAL NOTES

FILTER COLLECTION EFFICIENCY



CaptiveAir Caprate Solo Filter  
ETL Listed Grease-Extracting Filters  
Made From 430 Stainless Steel

FILTER DETAIL

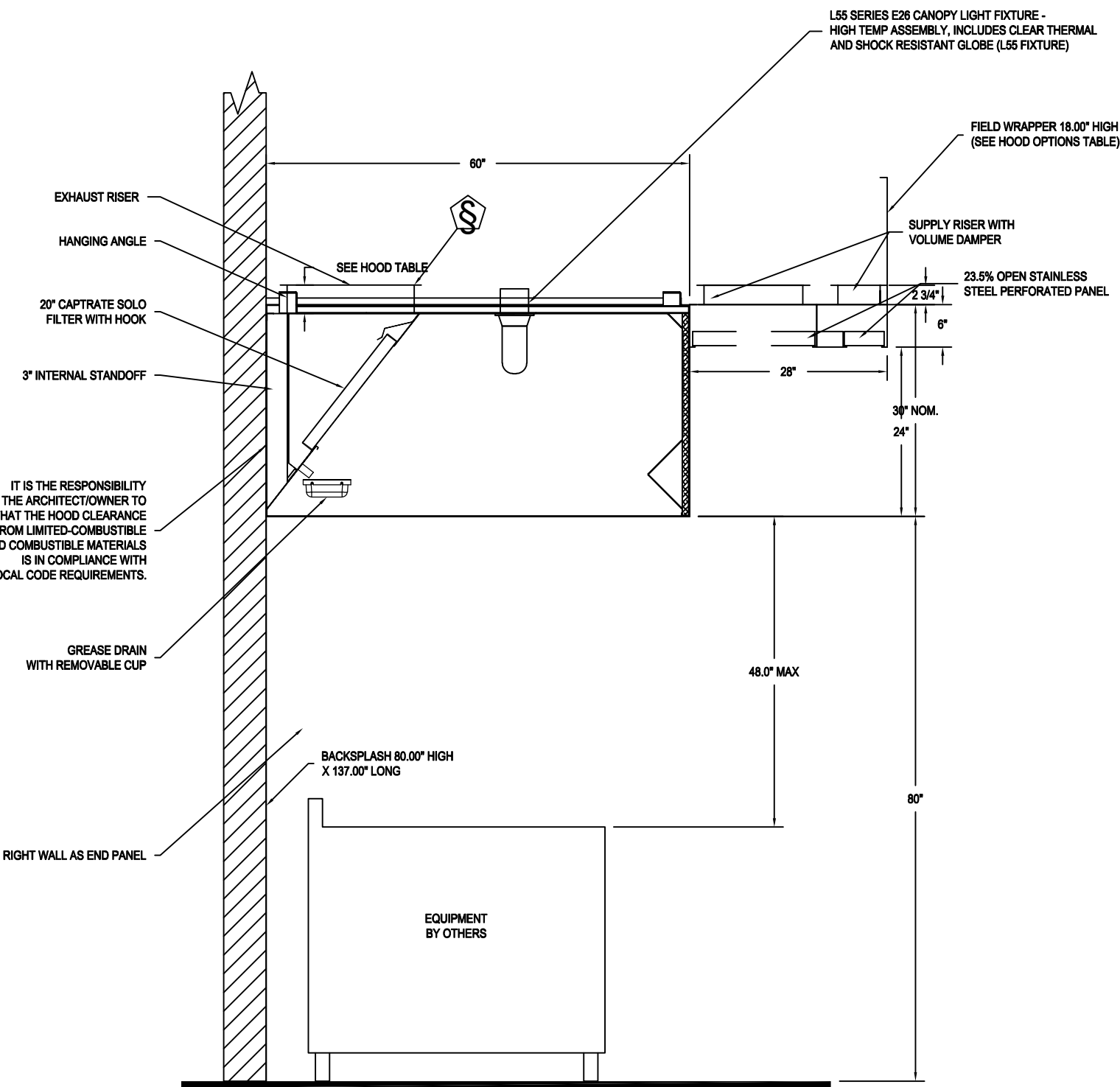


PLAN VIEW - Hood #1 (222)  
11' 4.00" LONG 60.30ND-2-ACSP-F

ACSPS ships loose for field installation

1" LAYER OF INSULATION  
FACTORY INSTALLED IN  
1.00" END STANDOFF MEETS  
7" REQUIREMENTS CLEARANCE  
TO COMBUSTIBLE SURFACES.

INSTALLER MUST CONFIRM HOOD IS INSTALLED SUCH  
THAT THE SPECIFIED WALL, ACTING AS AN END PANEL,  
IS MATED TIGHT TO THE CORRECT END OF HOOD TO  
ACHIEVE A REDUCED MINIMUM EXHAUST CFM LISTING.  
NON-COMPLIANCE WILL NULLIFY THE ETL LISTING.  
VOID THE MANUFACTURER'S WARRANTY, AND HOLD THE  
CONTRACTOR LIABLE FOR ANY AND ALL LOSSES, COSTS,  
AND EXPENSES RELATED TO THE NON-COMPLIANCE OF  
THE MANUFACTURER'S SPECIFIED INSTRUCTION. THE  
WALL, ACTING AS AN END PANEL, MUST EXTEND NO LESS  
THAN 30" FROM THE INTERSECTING WALL ON WHICH HOOD  
IS MOUNTED AND MUST EXTEND NO LESS THAN 20" UNDER  
BOTTOM OF HOOD TO BE ELIGIBLE FOR REDUCED  
MINIMUM EXHAUST CFM LISTING.



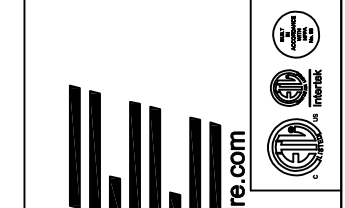
SECTION VIEW - MODEL 60.30ND-2-ACSP-F  
HOOD - #1 (222)

HVAC DISTRIBUTION NOTE

IT IS RECOMMENDED NOT TO INSTALL  
HIGH VELOCITY DIFFUSERS OR HVAC  
RETURNS WITHIN TEN (10) FEET OF  
THE EXHAUST HOOD. PERFORATED  
DIFFUSERS ARE RECOMMENDED.

EXHAUST HOOD DETAILS

REVISIONS	DESCRIPTION	DATE
1		
2		
3		
4		



www.captiveaire.com



Maryland Office  
2221 Kansas Ave. Silver Spring, MD 20910 PHONE: (800) 388-5881 FAX: (918) 227-5831 EMAIL: reg32@captiveaire.com

Odettes - New Hope, PA\_R2  
NEW HOPE, PA, 18938

DATE: 3/20/2018  
DWG.#: 3342779  
DRAWN BY: CDP-32  
SCALE: NTS  
MASTER DRAWING

SHEET NO. 2

GENERAL NOTE (TYP OF ALL SHEETS)

THESE DRAWINGS ARE FOR INFORMATION PURPOSES ONLY

The information conveyed in this set is intended to communicate design intent for use in the planning and bidding processes only. These documents are not for use in construction or to locate utilities or other requirements. The Kitchen Equipment Contractor and other sub-contractors are to verify all information and produce construction documents. T.O.O. parent company and affiliates will not be liable for action taken as a result of the design and equipment portrayed in these plans.

NIKEC: Not Included in the Kitchen Equipment Contract

REVISIONS	REVISIONS

SHEET TITLE:  
KITCHEN EQUIPMENT  
EXHAUST HOOD  
DETAILS

SCALE: NO SCALE  
DATE: 02/26/2019

SHEET NO.

K1.9

THE DESIGN DIFFERENCE  
Where the Difference is in the Details  
5425 WISCONSIN AVE STE 700  
CHEVY CHASE, MD 20815  
PHONE: 202-787-3317  
FAX: 202-835-1037  
EMAIL: sales@thedesigndifference.com  
www.thedesigndifference.com

Odettes  
NEW HOPE, PA