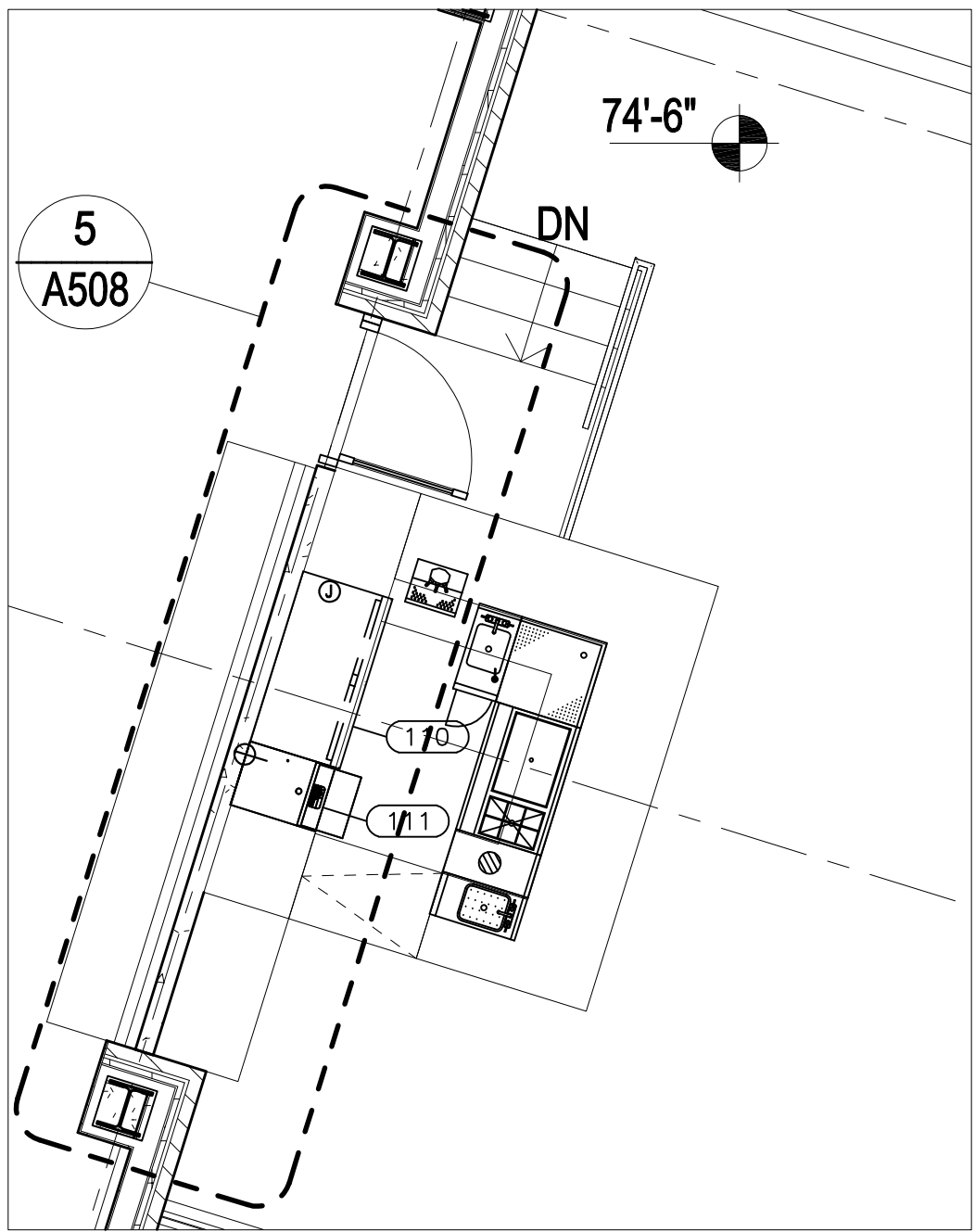
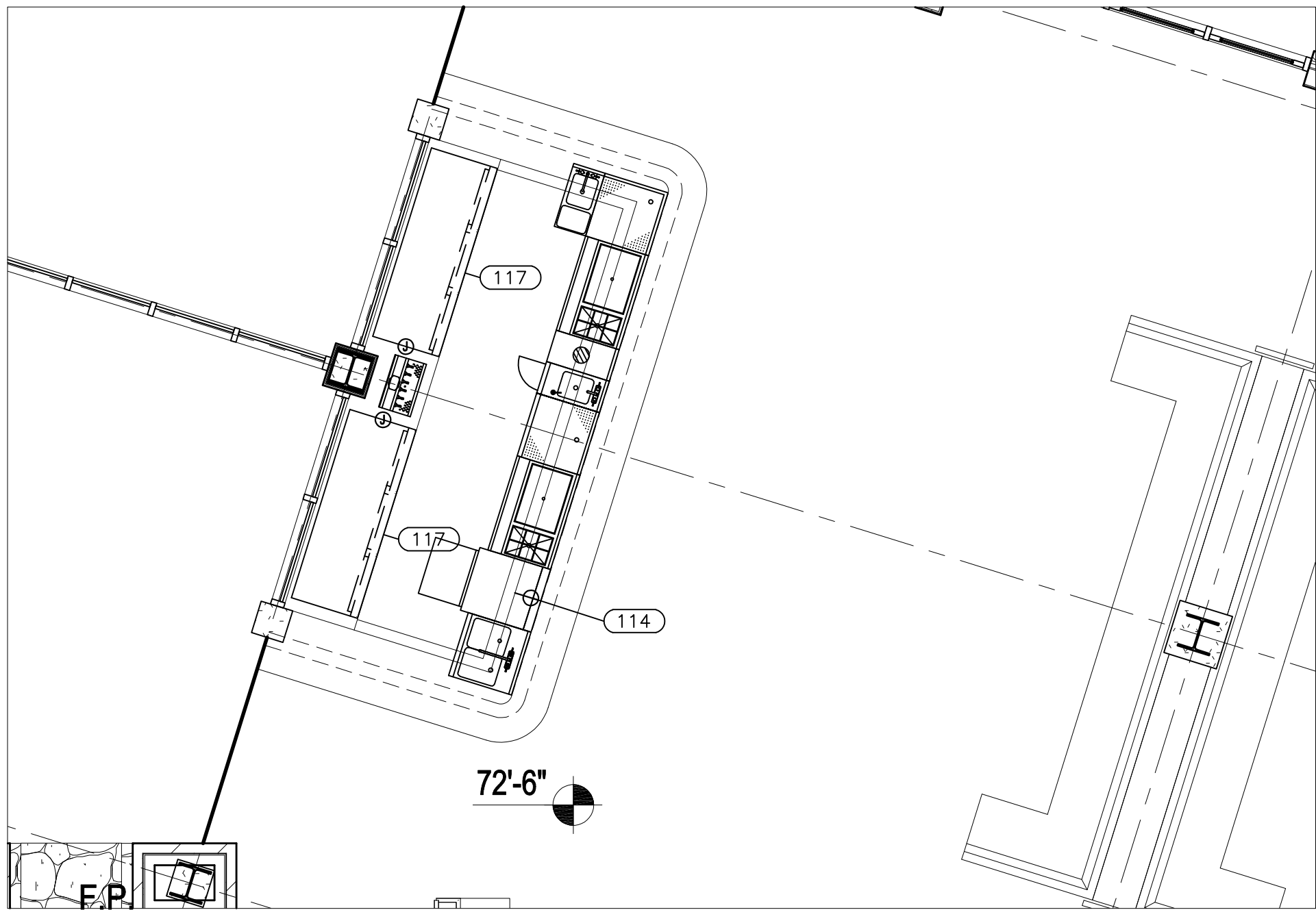


ELECTRICAL NOTES

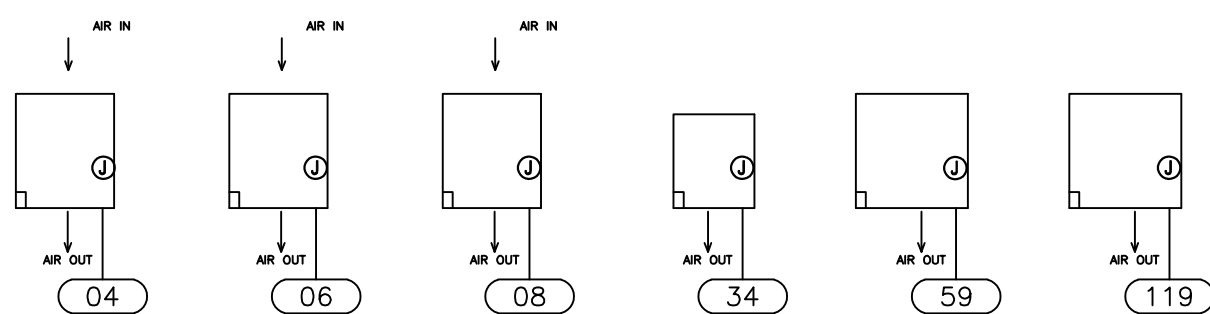
- THIS DRAWING LOCATES FINAL ELECTRICAL POINTS OF CONNECTION FOR EACH PIECE OF FOODSERVICE EQUIPMENT. IT DOES NOT INDICATE ROUGH-IN LOCATIONS, SIZES, AND HEIGHTS. LOCATIONS ABOVE THE FLOOR ARE ESTIMATES FOR THE EQUIPMENT SHOWN, AND EXACT REQUIREMENTS MUST BE VERIFIED PRIOR TO INSTALLATION. THE DESIGN OF SYSTEMS TO ACCOMMODATE THESE REQUIREMENTS IS TO BE IN ACCORDANCE WITH ALL APPLICABLE CODES AND MEET WITH THE APPROVAL OF ALL GOVERNING AUTHORITIES. KITCHEN EQUIPMENT CONTRACTOR WILL PROVIDE DIMENSIONED ROUGH-IN DRAWING FOR CONSTRUCTION.
- UTILITIES SHOWN ARE FOR FOODSERVICE EQUIPMENT ITEMS ONLY. THIS DRAWING MUST BE USED IN CONJUNCTION WITH THE ELECTRICAL DRAWINGS FOR OTHER REQUIRED UTILITIES.
- CONCEAL ALL UTILITIES IN WALLS AND STUB OUT OF WALLS AS REQUIRED FOR CONNECTIONS. DO NOT STUB OUT OF FLOOR OR RUN EXPOSED ON THE FACE OF WALLS.
- EXPOSED CONDUIT TO BE STAINLESS STEEL OR CHROME PLATED.
- POWER TO ALL ELECTRIC OPERATED EQUIPMENT UNDER THE HOOD IS TO COME FROM THE PANEL WHERE THE MAIN BREAKER IS INTERWIRED WITH THE FIRE EXTINGUISHING SYSTEM SO THAT POWER SHUT-OFF IS ACHIEVED UPON EITHER MANUAL OR AUTOMATIC OPERATION.
- PROVIDE A FLUSH, EMPTY JUNCTION BOX AT EACH REMOTE FIRE CABLE PULL STATION. PROVIDE CONDUIT CONCEALED IN WALL FROM JUNCTION BOX TO A POINT 6" ABOVE FINISHED CEILING.
- PROVIDE CONDUIT AND WIRING BETWEEN THE FUEL LINE SOLENOID SHUT-OFF VALVES, SHUNT TRIP BREAKERS, CONTACTORS AND FIRE EXTINGUISHING SYSTEMS.
- PROVIDE CONDUIT AND WIRING BETWEEN ELECTRIC DEFROST UNIT AND CONDENSING UNITS FOR WALK-IN FREEZERS AS REQUIRED.
- ELECTRICAL SYSTEM IS DESIGNED FOR 120/208 VOLTS, 1.3 PHASE, 60 HERTZ, 4 WIRE SYSTEM.
- ELECTRICAL DIVISION SHALL FURNISH AND INSTALL ALL JUNCTION BOXES, RECEPTACLES, COVER PLATES, PULL BOXES, CONDUIT AND WIRING EXCEPT WHERE NOTED. RECEPTACLES AND COVER PLATES SHALL BE BRUSHED STAINLESS STEEL FURNISHED BY ELECTRICAL DIVISION.
- ALL CONDUIT RUNS INDICATED FOR REFRIGERATION, DRINK AND LIQUOR SYSTEM LINES SHALL BE FURNISHED AND INSTALLED BY THE ELECTRICAL DIVISION. CONDUIT SHALL HAVE 24" (600MM) MINIMUM RADIUS BENDS.
- KITCHEN EQUIPMENT CONTRACTOR SHALL FURNISH AND INSTALL VAPOR PROOF VENTILATOR LIGHTS COMPLETE WITH LAMPS, INTERCONNECTING CONDUIT, WIRING WITH WALL SWITCH FURNISHED AND INSTALLED BY THE ELECTRICAL DIVISION.
- ADDITIONAL CONVENIENCE RECEPTACLES, TELEPHONE AND INTERCOM JACKS AND TEMPERATURE MONITORING SYSTEM ETC. SHALL BE LOCATED BY THE ELECTRICAL ENGINEER, ARCHITECT AND AS REQUIRED BY CODE.
- KITCHEN EQUIPMENT CONTRACTOR SHALL FURNISH DISPOSER CONTROLS. ELECTRICAL DIVISION SHALL FURNISH AND INSTALL INTER-CONNECTING CONDUIT AND WIRE BETWEEN SWITCH, DISPOSER AND COMPONENTS.
- ELECTRICAL DIVISION SHALL FURNISH AND INSTALL ALL INTERCONNECTING CONDUIT AND WIRING BETWEEN MICRO-SWITCH AND SOLENOID FUEL SHUT OFF VALVE FURNISHED WITH FIRE SUPPRESSION SYSTEM SUPPLIED BY THE KITCHEN EQUIPMENT CONTRACTOR.
- PRE-FABRICATED COLD STORAGE ROOMS ARE FURNISHED BY THE KITCHEN EQUIPMENT CONTRACTOR COMPLETE WITH SPICE BOXES, LIGHT FIXTURES, LAMPS, LIGHT SWITCHES AND DOOR HEATERS. ELECTRICAL DIVISION TO INSTALL SAME AND SHALL FURNISH AND INSTALL INTERCONNECTING CONDUIT, WIRE SEALOFFS, SEALANT AND MAKE FINAL CONNECTIONS.
- ELECTRICAL DIVISION SHALL FURNISH AND INSTALL ALL INTERCONNECTING CONDUIT AND WIRING BETWEEN KITCHEN EQUIPMENT CONTRACTOR FURNISHED LOW TEMP COLD STORAGE ROOM EVAPORATOR TERMINAL BLOCK, SWITCH, FAN DOOR SWITCH AND COMPRESSOR CONTROL PANEL.
- ELECTRICAL DIVISION SHALL FURNISH AND INSTALL EMPTY CONDUIT WITH JUNCTION BOXES FOR INSTALLATION OF OWNER SUPPLIED I.T. EQUIPMENT INCLUDING POS/ ELECTRONIC CASH CONTROL SYSTEM. ELECTRICAL DIVISION TO VERIFY INSTALLATION IN ACCORDANCE WITH OWNERS REQUIREMENTS AND MANUFACTURER'S INSTRUCTIONS.
- ELECTRICAL DIVISION SHALL FURNISH AND INSTALL DISCONNECTS FOR ALL ELECTRICAL EQUIPMENT UNDER HOOD ACTIVATED BY FIRE SUPPRESSION SYSTEM.
- FOR POS SYSTEMS, PROVIDE DEDICATED CIRCUIT, ISOLATED GROUND. PROVIDE AN EMPTY J-BOX WITH CONDUIT FOR INTERCONNECTING POS TERMINALS AND PRINTERS. VERIFY ALL REQUIREMENTS WITH SYSTEM SUPPLIER.
- FOR WALK-IN REFRIGERATORS/FREEZERS, ALL CONDUIT SHALL BE RUN ON THE EXTERIOR CEILING OF ALL COLD STORAGE ROOMS AND SHALL PENETRATE THE CEILING AT A POINT WHERE THE CONDUIT CAN DROP DIRECTLY TO THE POINT OF CONNECTION. UNDER NO CIRCUMSTANCES, WILL THE ELECTRICAL CONDUIT BE PERMITTED ON THE INTERIOR.



ELECTRICAL CONNECTION LEGEND

SR	SINGLE RECEPTACLE
DR	DUPLEX RECEPTACLE
JB/EC	JUNCTION BOX / ELECTRICAL CONNECTION
DCR	DROP CORD RECEPTACLE
JB/D	JUNCTION BOX DATA
CO	CONVENIENCE OUTLET
FW	FIELD WIRING
SW	SWITCH
RF	REMOTE FIRE PULL
AFF	ABOVE FINISHED FLOOR
DFA	DOWN FROM ABOVE
ACH	ABOVE COUNTER HEIGHT
BTC	BRANCH TO CONNECT
EC	ELECTRICAL CONTRACTOR
NIC	NOT IN CONTRACT

REMOTE CONDENSING UNITS



AIR COOLED, OUTDOOR - LOCATED BY ARCHITECT - Not to Scale

GENERAL NOTE (TYP. OF ALL SHEETS)

THESE DRAWINGS ARE FOR INFORMATION PURPOSES ONLY
The information conveyed in this set is intended to communicate design intent for use in the planning and bidding processes only. These documents are not for use in construction or to locate utilities or other requirements. The Kitchen Equipment Contractor and other sub-contractors are to verify all information and produce construction documents. TDD, parent company and affiliates will not be liable for action taken as a result of the design and equipment portrayed in these plans.

NIKEC: Not Included in the Kitchen Equipment Contract

REVISIONS

REVISIONS