

RIVERHOUSE AT
Odette's

274 SOUTH RIVER ROAD
NEW HOPE, PA 18938

OWNER/ OPERATOR:
GATEWAY TO NEW HOPE, LLC
274 South River Road
New Hope, PA 18938

ARCHITECT:
STOKES ARCHITECTURE
2103 Sansom Street
Philadelphia, PA 19103
tel: (215) 523-9190

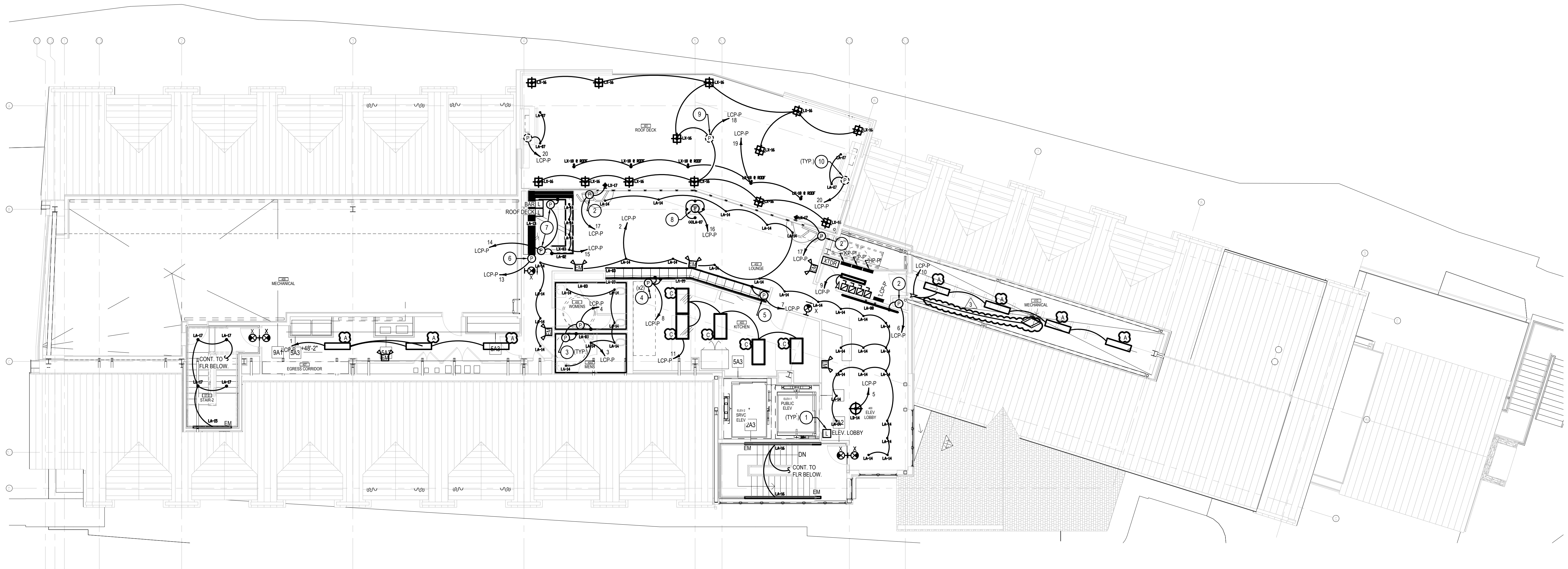
INTERIOR DESIGNER:
BALONGUE DESIGN INC
707 Malsortford Road
Villanova, PA 19085
tel: (610) 525-7593
fax: (610) 525-7594

CIVIL ENGINEER:
VAN CLEEF ENGINEERING
ASSOCIATES, LLC
501 North Main Street
Doylestown, PA 18901
tel: (215) 345-1876
fax: (215) 345-1730

STRUCTURAL ENGINEER:
O'DONNELL & NACCARATO
111 S. Independence Mall East Suite 950
Philadelphia, PA 19106
tel: (215) 925-3788

MEP ENGINEER:
WICK FISHER WHITE
111 S. Independence Mall East Suite 400
Philadelphia, PA 19106
tel: (215) 627-8000
fax: (215) 627-8040

LIGHTING DESIGNER:
BRIAN ORTER LIGHTING DESIGN LLC
227 W. 29th St 8th Floor
New York, NY 10001
tel: (646) 502-7568



PENTHOUSE PLAN — LIGHTING WORK
SCALE : 1/8" = 1'-0"

NOTES :

- REFER TO DRAWING MPE-1 FOR HVAC, PLUMBING/FIRE PROTECTION & ELECTRICAL GENERAL NOTES, ABBREVIATIONS, LEGENDS & DRAWING LIST.
- UNLESS OTHERWISE NOTED, ALL CIRCUITS SHALL HAVE DEDICATED NEUTRAL.
- ALL EXIST SIGNS, EMERGENCY BATTERY PACKS & EMERGENCY LIGHTING FIXTURES (NOTED EM) SHALL BE UNSWITCHED AND CONNECTED AHEAD OF ANY LIGHTING CONTROL DEVICES FOR THE CIRCUIT SERVING THE NORMAL LIGHTING FIXTURES IN THE AREA.
- UNLESS OTHERWISE NOTED, ALL 120 VOLT, SINGLE PHASE CIRCUIT SHALL HAVE 2#12 THUS IN 3/4" AS A MINIMUM. ALL 120 VOLT, 20A SINGLE PHASE CIRCUITS OVER 80 FT. IN LENGTH AND 277V 20A CIRCUITS GREATER THAN 200 FT. IN LENGTH SHALL BE 2#10 THUS IN 3/4".
- UNLESS OTHERWISE NOTED, ALL 277 VOLT, SINGLE PHASE CIRCUIT SHALL HAVE 2#12 THUS IN 3/4" AS A MINIMUM. ALL 277 VOLT, 20A SINGLE PHASE CIRCUITS GREATER THAN 200 FT. IN LENGTH SHALL BE 2#10 THUS IN 3/4".
- GUEST ROOM LIGHTING CONTROL SHALL BE THE STANZA SYSTEM BY LUTRON OR APPROVED EQUAL.
- REFER TO THE LIGHTING CONTROL PANEL (LCP) SCHEDULES FOR ALL LIGHTING CIRCUIT INFORMATION.
- ALL REMOTE POWER SUPPLY / DRIVERS SHOWN ON PLAN ARE FOR REFERENCE. ALL FINAL LOCATIONS, QUANTITIES, ETC. ARE TO BE COORDINATED AND INSTALLED IN THE FIELD AS DETERMINED BY THE CONTRACTOR.
- REFER TO LIGHTING DESIGNER DRAWING SET FOR ADDITIONAL INFORMATION.
- WHERE FIXTURES ARE NOTED 'EM' SHALL BE FURNISHED WITH EMERGENCY BATTERY PACKS AS STANDARD.

DRAWING NOTES :

- LUTRON QS, FIVE BUTTON SCENE CONTROLLER (QUANTUM SERIES); FINAL LOCATION TO BE DETERMINED IN THE FIELD. REFER TO DETAILS SHEET FOR ADDITIONAL LUTRON SPECIFIC INFORMATION.
- PROVIDE COMPATIBLE LUTRON REMOTE LED DRIVER AND MOUNT WITHIN WALL SECTION OR CEILING (WHERE FEASIBLE WITH AN ACCESS PANEL). REMOTE POWER SUPPLY SHALL BE BY LUMINI PSV-XX-24-D OR APPROVED EQUAL.
- PROVIDE REMOTE POWER SUPPLY(S) AND MOUNT WITHIN WALL SECTION OR CEILING (WHERE FEASIBLE WITH AN ACCESS PANEL). REMOTE POWER SUPPLY SHALL BE BY LUMINI PSV-XX-24-D OR APPROVED EQUAL.
- PROVIDE REMOTE POWER SUPPLY(S) AND MOUNT WITHIN FURNITURE / CASEWORK SHOWN. REMOTE POWER SUPPLY(S) SHALL BE BY EDGE LIGHTING PSB-XX-010-24VDC OR APPROVED EQUAL.
- PROVIDE COMPATIBLE LUTRON REMOTE LED DRIVER AND MOUNT WITHIN CASEWORK.
- PROVIDE REMOTE POWER SUPPLY(S) FOR LED CEILING GRID. INSTALL POWER SUPPLY(S) ABOVE BAR ONB CEILING WITH ACCESS PANEL.
- PROVIDE REMOTE POWER SUPPLY AND MOUNT WITHIN BAR CASEWORK. REMOTE POWER SUPPLY SHALL BE BY LUMINI PSV-XX-24-D OR APPROVED EQUAL.
- PROVIDE REMOTE POWER SUPPLY AND INSTALL WITHIN FURRED OUT WALL SECTION. RUN CONDUIT BENEATH FLOORING TO RECESSED LED UPLIGHTS. REMOTE POWER SUPPLY SHALL BE BY LUMINI PSV-XX-24-D OR APPROVED EQUAL.
- PROVIDE COMPATIBLE LUTRON REMOTE LED DRIVER WITHIN NEMA-4 ENCLOSURE. MOUNT BENEATH DECK (SHOWN DASHED AS HIDDEN BENEATH).
- PROVIDE REMOTE LED DRIVER WITHIN NEMA-4 ENCLOSURE. MOUNT WITHIN FIREPLACE CASEWORK OR BENEATH DECK (SHOWN DASHED AS HIDDEN WITHIN). REMOTE POWER SUPPLY SHALL BE BY MP LIGHTING LEDW350L OR APPROVED EQUAL.

STOKES.
ARCHITECTURE + DESIGN
STOKESARCH.COM

SEAL

PROJECT #	FILENAME	140145.001
DRAWN:	WFW	
CHECKED:	WFW	
DATE:	07/25/18	
ISSUE FOR CONSTRUCTION	02/28/2019	
3 COMMISSIONING COMMENTS	01/23/2019	
2 PERMIT SET	07/25/2018	
1 90% PRICING SET	06/18/2018	
MARK REVISIONS	DATE	

ALL DIMENSIONS AND RELATIONSHIPS MUST BE VERIFIED BY CONTRACTOR. THE ARCHITECT IS TO BE NOTIFIED OF ANY DISCREPANCIES BEFORE PROCEEDING WITH THE CONSTRUCTION. DO NOT SCALE FROM DRAWINGS.

PROJECT #	140145.001
DRAWN:	WFW
CHECKED:	WFW
DATE:	07/25/18

ISSUE FOR CONSTRUCTION
02-28-2019

PENTHOUSE
PLAN-LIGHTING

DRAWING

E-9