

RIVERHOUSE AT Odette's

274 SOUTH RIVER ROAD
NEW HOPE, PA 18938

OWNER/ OPERATOR:
GATEWAY TO NEW HOPE, LLC
274 South River Road
New Hope, PA 18938

ARCHITECT:
STOKES ARCHITECTURE
2103 Sansom Street
Philadelphia, PA 19103
tel: (215) 523-9190

INTERIOR DESIGNER:
BALONGUE DESIGN INC
707 Malsortford Road
Villanova, PA 19085
tel: (610) 525-7593
fax: (610) 525-7594

CIVIL ENGINEER:
VAN CLEEF ENGINEERING
ASSOCIATES, LLC
501 North Main Street
Doylestown, PA 18901
tel: (215) 345-1876
fax: (215) 345-1730

STRUCTURAL ENGINEER:
O'DONNELL & NACCARATO
111 S. Independence Mall East Suite 950
Philadelphia, PA 19106
tel: (215) 925-3788

MEP ENGINEER:
WICK FISHER WHITE
111 S. Independence Mall East Suite 400
Philadelphia, PA 19106
tel: (215) 627-8000
fax: (215) 627-8040

LIGHTING DESIGNER:
BRIAN ORTER LIGHTING DESIGN LLC
227 W. 29th St 8th Floor
New York, NY 10001
tel: (646) 502-7568

STOKES.
ARCHITECTURE + DESIGN
STOKESARCH.COM

SEAL

NO.	REVISIONS	DATE
1	90% PRICING SET	06.18.2018
2	PERMIT SET	07.25.2018
3	COMMISSIONING COMMENTS	01.23.2019
	ISSUE FOR CONSTRUCTION	02.28.2019

ALL DIMENSIONS AND RELATIONSHIPS MUST BE VERIFIED BY CONTRACTOR. THE ARCHITECT IS TO BE NOTIFIED OF ANY DISCREPANCIES BEFORE PROCEEDING WITH THE CONSTRUCTION. DO NOT SCALE FROM DRAWINGS.

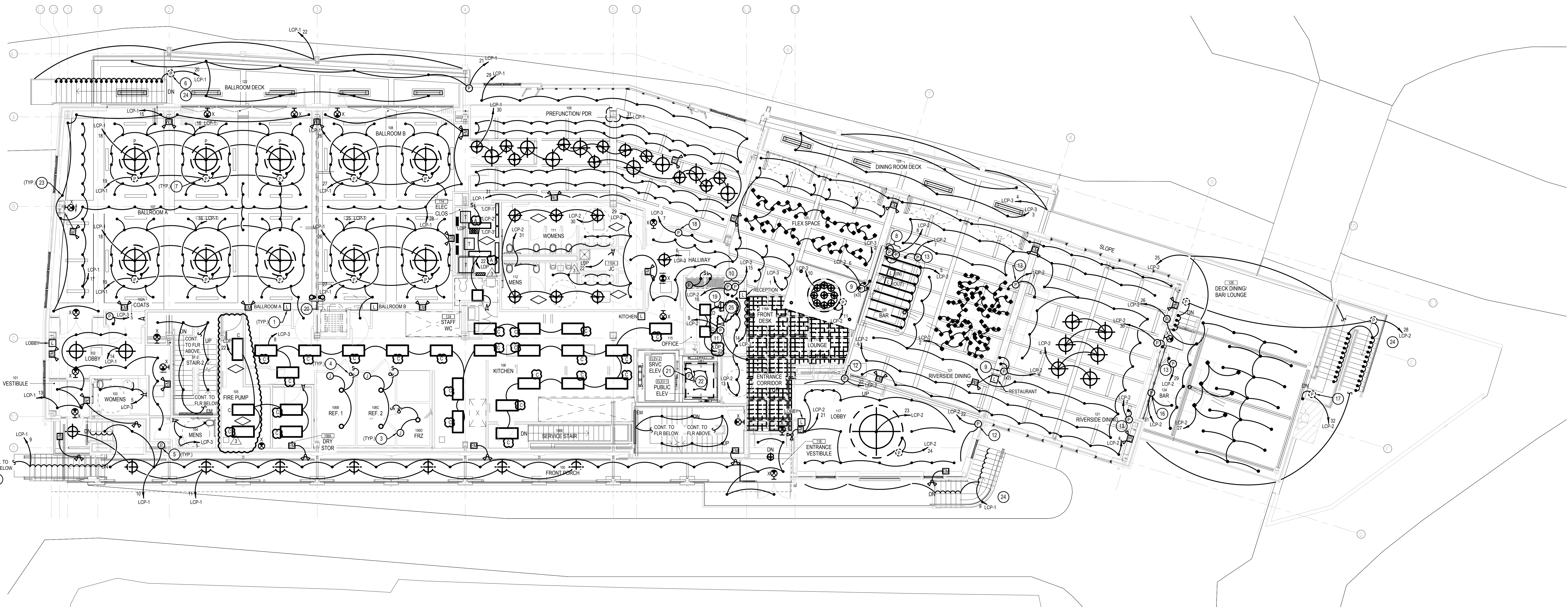
PROJECT #: 140145.001
DRAWING: WFW
CHECKED: WFW
DATE: 07/25/18

ISSUE FOR CONSTRUCTION
02-28-2019

FIRST FLOOR
PLAN-LIGHTING

DRAWING

E-3



FIRST FLOOR PLAN — LIGHTING WORK
SCALE : 1/8" = 1'-0"

NOTES :

- REFER TO DRAWING MPE-1 FOR HVAC, PLUMBING/FIRE PROTECTION & ELECTRICAL. GENERAL NOTES, ABBREVIATIONS, LEGENDS & DRAWING LIST.
- UNLESS OTHERWISE NOTED, ALL CIRCUITS SHALL HAVE DEDICATED NEUTRAL.
- ALL EXIT SIGNS, EMERGENCY BATTERY PACKS & EMERGENCY LIGHTING FIXTURES (NOTED 'EM') SHALL BE UNWITTING AND CONNECTED AHEAD OF ANY LIGHTING CONTROL DEVICES FOR THE CIRCUIT SERVING THE NORMAL LIGHTING FIXTURES IN THE AREA.
- UNLESS OTHERWISE NOTED, ALL 120 VOLT, SINGLE PHASE CIRCUIT SHALL HAVE 2#12, 1#120 IN 3/4" AS A MINIMUM. ALL 277 VOLT, 20A SINGLE PHASE CIRCUITS OVER 80 FT. IN LENGTH AND 277V 20A CIRCUITS GREATER THAN 200 FT. IN LENGTH SHALL BE 2#10, 1#100 IN 3/4".
- UNLESS OTHERWISE NOTED, ALL 277 VOLT, SINGLE PHASE CIRCUIT SHALL HAVE 2#12, 1#120 IN 3/4" AS A MINIMUM. ALL 277 VOLT, 20A SINGLE PHASE CIRCUITS GREATER THAN 200 FT. IN LENGTH SHALL BE 2#10, 1#100 IN 3/4".
- REFER TO THE LIGHTING CONTROL PANEL (LCP) SCHEDULES FOR ALL LIGHTING CIRCUIT INFORMATION.
- ALL REMOTE POWER SUPPLIES / DRIVER SHOWN ON PLAN ARE FOR REFERENCE. ALL FINAL LOCATIONS ARE TO BE COORDINATED AND LOCATED IN THE FIELD AS DETERMINED BY THE CONTRACTOR.
- WHERE FIXTURES ARE NOTED 'EM' SHALL BE FURNISHED WITH EMERGENCY BATTERY PACKS AS STANDARD.

DRAWING NOTES :

- LUTRON QS, FIVE BUTTON SCENE CONTROLLER (QUANTUM SERIES), FINAL LOCATION TO BE DETERMINED IN THE FIELD. REFER TO DETAILS SHEET FOR ADDITIONAL LUTRON SPECIFIC INFORMATION.
- EXTEND CIRCUIT THROUGHOUT STAIR TOWER.
- REFER TO POWER & SYSTEM PLANS FOR CIRCUIT INFO ON WALK-IN LIGHTS.
- CEILING PENETRATION TO EXTEND LIGHTING CONDUITS ABOVE CEILING.
- MOUNT REMOTE TRANSFORMER (300W) WITHIN FURRED OUT WALL SECTION. PROVIDE ACCESS PANEL FOR MAINTENANCE ACCESS. TRANSFORMER SHALL BE HEVI LITE HLT-300 OR APPROVED EQUAL - TYPICAL FOR LX-64 FIXTURES.
- PROVIDE REMOTE POWER SUPPLY WITHIN NEMA-4 ENCLOSURE. MOUNT: BENEATH DECK (SHOWN DASHED AS HIDDEN BENEATH); REMOTE POWER SUPPLY SHALL BE BY LUMINI PSV-XX-24-1P65 OR APPROVED EQUAL TYPICAL FOR STAIRCASE LX-63 FIXTURES.
- PROVIDE REMOTE POWER SUPPLY. MOUNT WITHIN CEILING (SHOWN DASHED AS HIDDEN WITHIN). REMOTE POWER SUPPLY SHALL BE BY LUMINI PSV-XX-24-0 OR APPROVED EQUAL.
- PROVIDE REMOTE POWER SUPPLIES AND MOUNT WITHIN BAR CASEWORK FOR THE TWO ZONES ILLUSTRATED. THESE ZONES CONTROL THE BACK WALL & LIQUOR RISER LED FIXTURES AS WELL AS THE BAR TASK & FRONT LED FIXTURES. REMOTE POWER SUPPLY SHALL BE BY LUMINI PSV-XX-24-0 OR APPROVED EQUAL.
- PROVIDE REMOTE POWER SUPPLIES AND MOUNT WITHIN FURNITURE / CASEWORK SHOWN. REMOTE POWER SUPPLIES SHALL BE BY EDGE LIGHTING PSB-XX-010-24VDC OR APPROVED EQUAL.
- PROVIDE REMOTE POWER SUPPLY. MOUNT SHELVE LED POWER SUPPLY WITHIN CASEWORK / MILLWORK AND MOUNT THE GLAZING LED POWER SUPPLY WITHIN THE CEILING. MILLWORK POWER SUPPLY SHALL BE LUMINI PSV-XX-24-0 AND GLAZING POWER SUPPLY SHALL BE BY EDGE LIGHTING PSB-XX-010-24VDC OR APPROVED EQUAL.
- PROVIDE REMOTE POWER SUPPLY(S) FOR LED CEILING GRID. INSTALL POWER SUPPLY(S) ABOVE RECEPTION OFFICE DROP CEILING.

- PROVIDE REMOTE POWER SUPPLY AND INSTALL WITHIN FURRED OUT WALL SECTION. RUN CONDUIT BENEATH FLOORING TO RECESSED LED UP-LIGHTS. REMOTE POWER SUPPLY SHALL BE BY MP LIGHTING LEDWISOL OR APPROVED EQUAL.
- PROVIDE COMPATIBLE LUTRON REMOTE LED DRIVER AND MOUNT WITHIN FURNITURE MILLWORK - TYPICAL FOR LA-02 FIXTURES.
- PROVIDE REMOTE POWER SUPPLY. MOUNT WITHIN OUTDOOR BAR CASEWORK. REMOTE POWER SUPPLY SHALL BE BY LUMINI PSV-XX-24-1P65 OR APPROVED EQUAL.
- PROVIDE REMOTE POWER SUPPLY. MOUNT WITHIN CEILING (SHOWN DASHED AS HIDDEN WITHIN). REMOTE POWER SUPPLY SHALL BE BY LUMINI PSV-XX-24-0 OR APPROVED EQUAL.
- PROVIDE REMOTE POWER SUPPLY WITHIN NEMA-4 ENCLOSURE. MOUNT: BENEATH DECK (SHOWN DASHED AS HIDDEN BENEATH); REMOTE POWER SUPPLY SHALL BE BY SYSTEMALUX OR APPROVED EQUAL.
- PROVIDE COMPATIBLE LUTRON REMOTE LED DRIVER AND MOUNT WITHIN CEILING (WHERE FEASIBLE WITH AN ACCESS PANEL).
- PROVIDE LUTRON QUANTUM LIGHT MANAGEMENT HUB. SEE POWER PLANS FOR BRANCH CIRCUIT INFORMATION. REFER TO DETAILS SHEET FOR ADDITIONAL LUTRON SPECIFIC INFORMATION.
- LUTRON INFRARED PARTITION SWITCH. MOUNT HIGH AT CEILING BETWEEN PARTITIONS, WIRE ACCORDING TO MANUFACTURER.
- PROVIDE REMOTE POWER SUPPLY. MOUNT WITHIN ELEVATOR CAB MILLWORK OR ABOVE ACCESSIBLE CEILING. REMOTE POWER SUPPLY SHALL BE BY LUMINI PSV-XX-24-0 OR APPROVED EQUAL.
- CIRCUIT FIXTURES FROM DEDICATED ELEVATOR CAR LIGHTING, RECEPTACLE, AND VENTILATION SOURCE. REFER TO POWER PLANS FOR ADDITIONAL INFORMATION.
- PROVIDE REMOTE POWER SUPPLY (NOT SHOWN BEHIND FIXTURE). MOUNT TO WALL IN-LINE WITH FIXTURE. REMOTE POWER SUPPLY SHALL BE BY HEVI LITE IMED OR APPROVED EQUAL.
- CIRCUIT BREAKERS FOR LIGHTING CIRCUITS CLP-19, CLP-120 AND CLP-128 SHALL BE ABLE TO BE SWITCHED OFF IN CASE OF FLOOD. CIRCUIT THE LIGHT FIXTURES AS NOTED ON THE DRAWING. DO NOT CONNECT OTHER LIGHT FIXTURES TO THESE CIRCUITS.

PROVIDE WALL BOX 6-10V DIMMER AND OCCUPANCY/VACANCY PIR SENSOR, SINGLE POLE, 120V LUTRON MAESTRO MS-Z101 OR EQUAL.