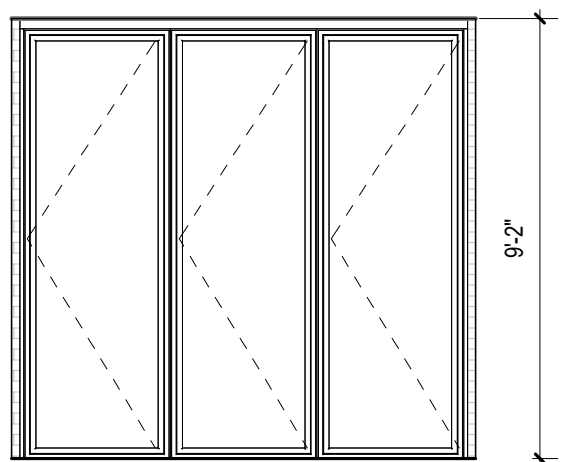
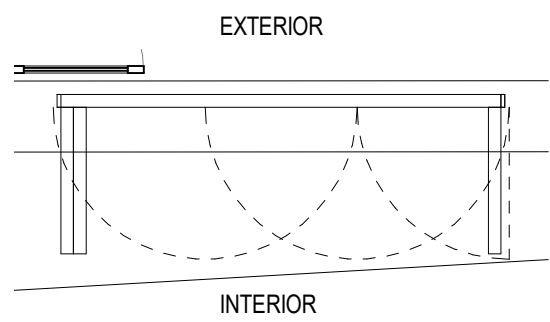
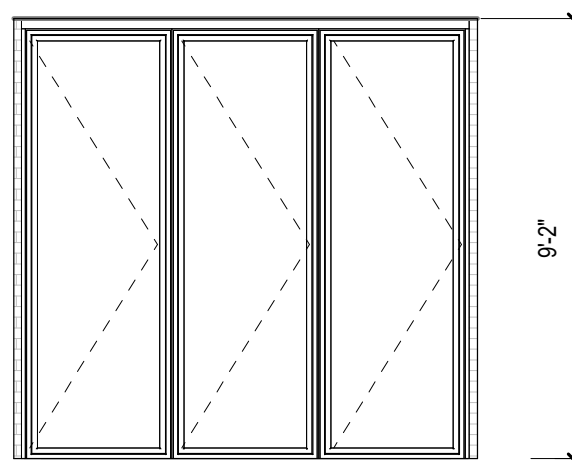
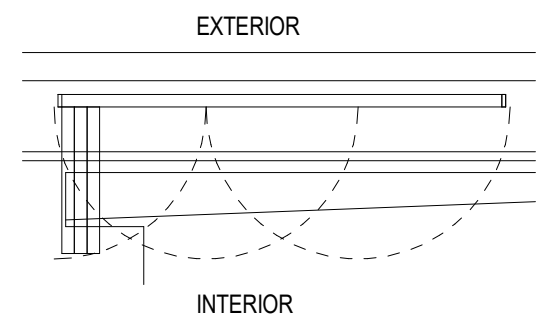


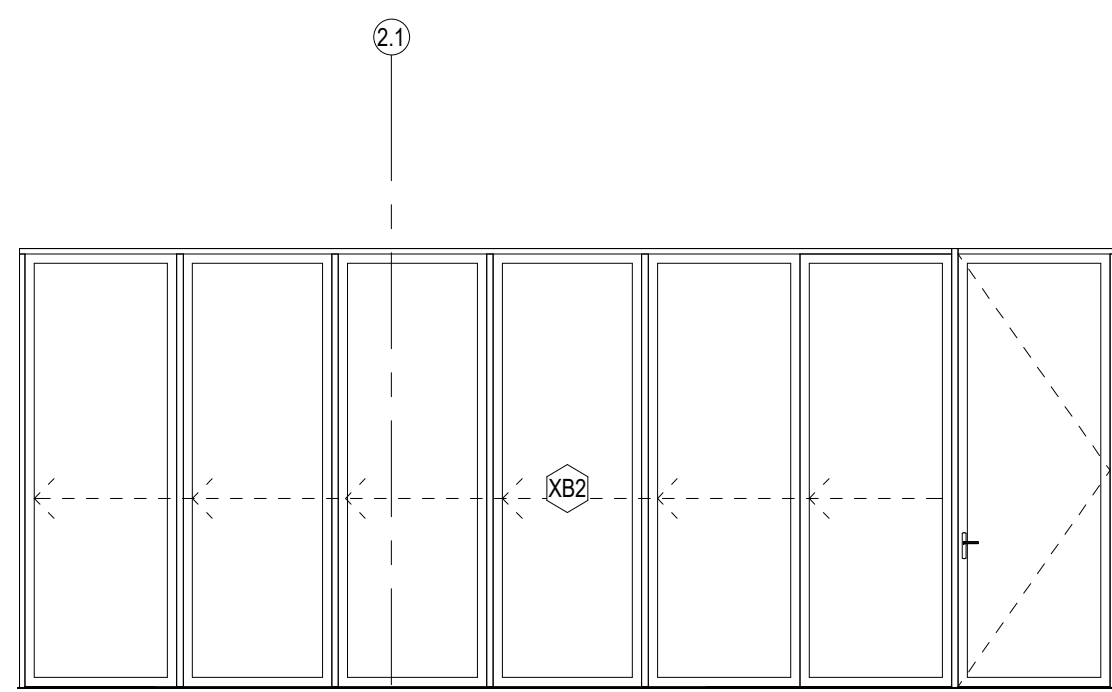
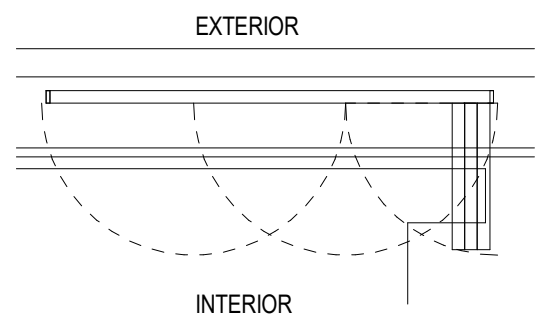
TYPE XA  
FOLDING PANEL SYSTEM



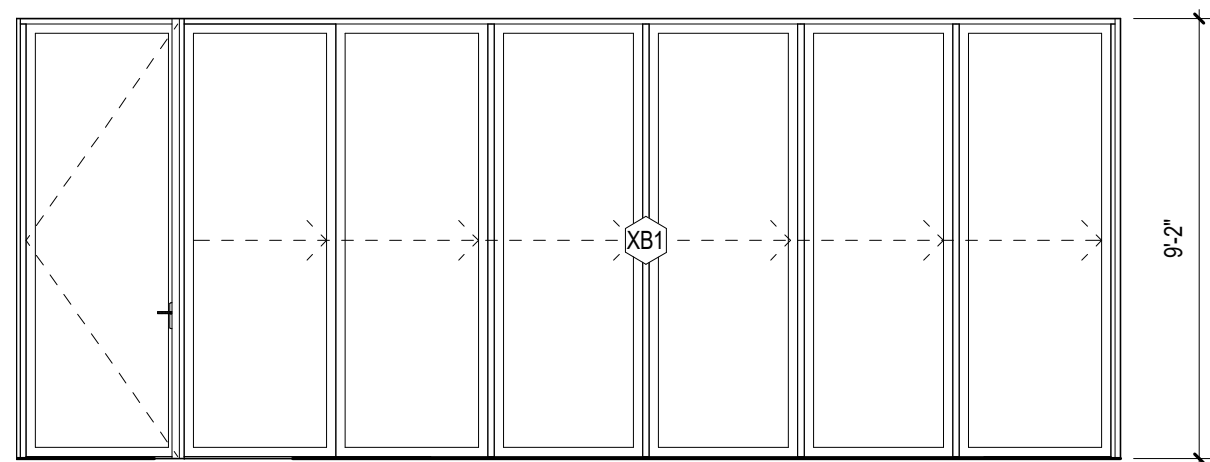
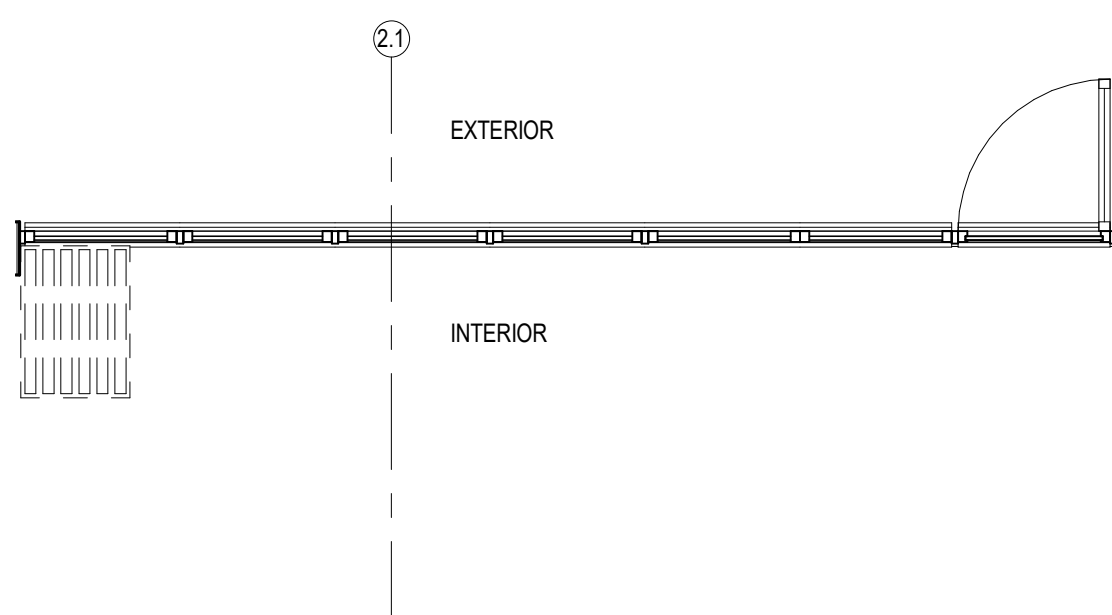
TYPE XA.1  
FOLDING PANEL SYSTEM



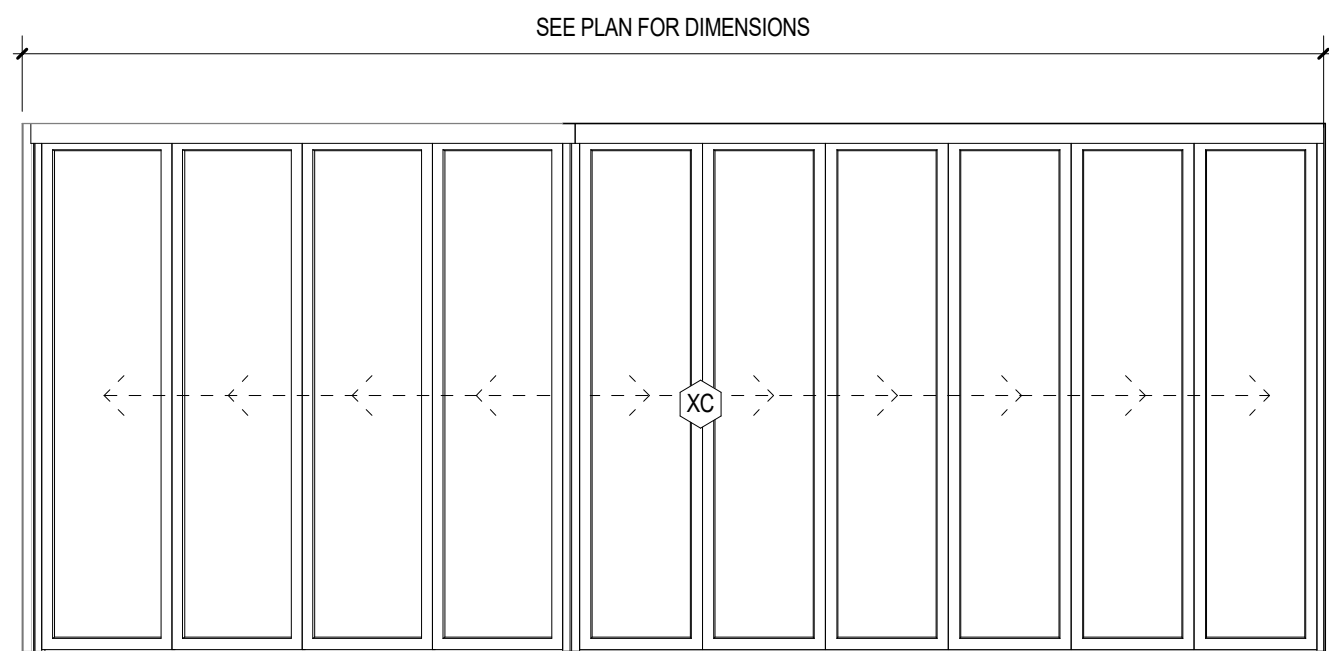
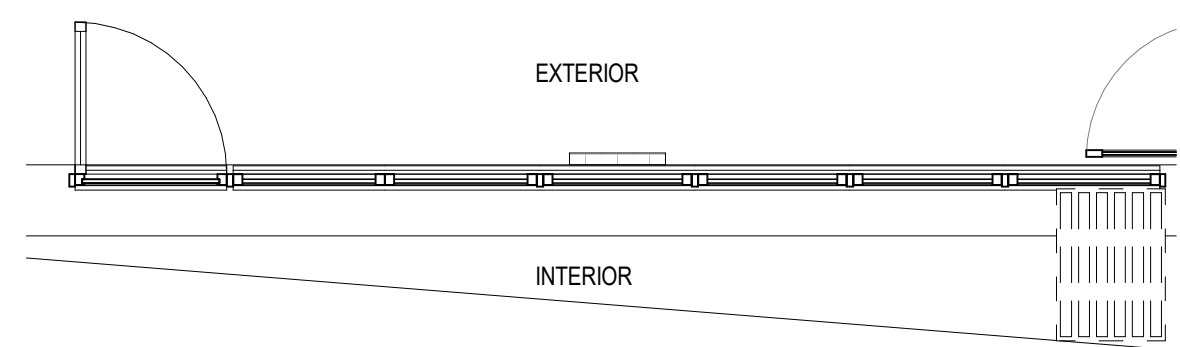
TYPE XA.2  
FOLDING PANEL SYSTEM



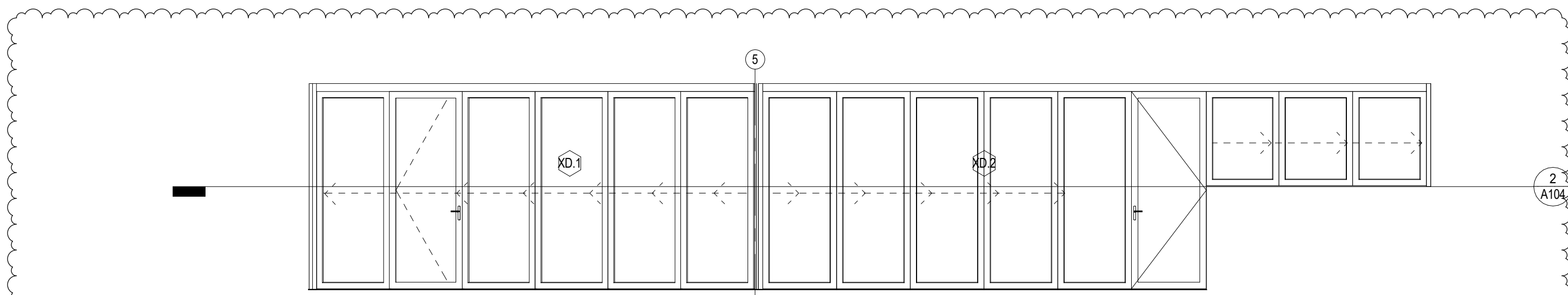
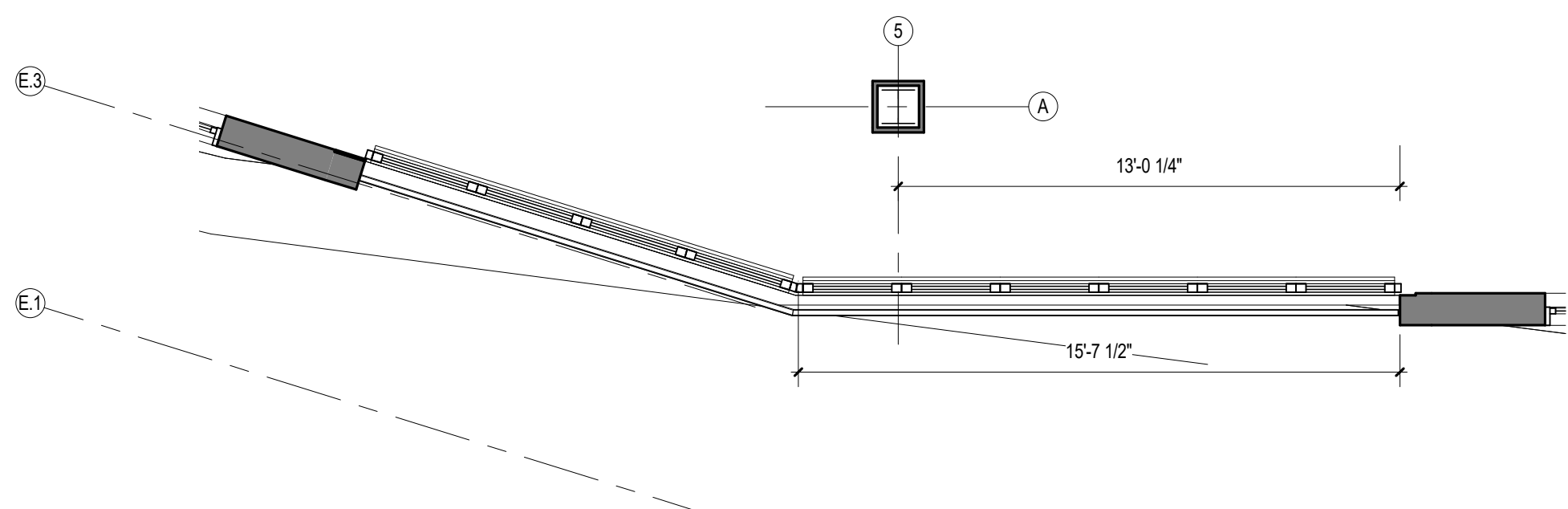
TYPE XB2  
SINGLE TRACK  
FOLDING PANEL SYSTEM



TYPE XBI  
SINGLE TRACK  
FOLDING PANEL SYSTEM



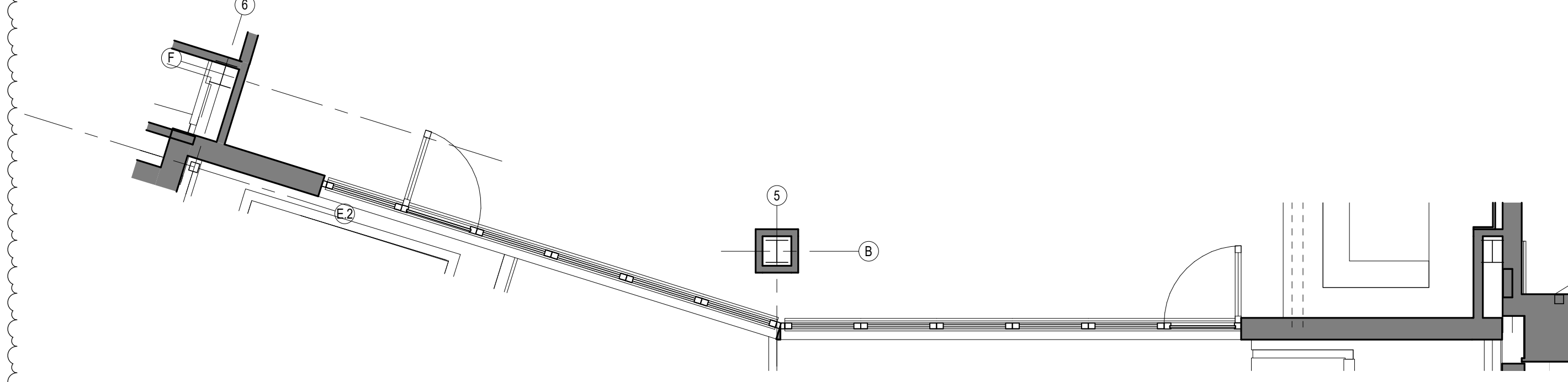
TYPE XC  
SINGLE TRACK  
SLIDING PANEL SYSTEM



TYPE XD.1  
SINGLE TRACK  
SLIDING PANEL SYSTEM

TYPE XD.2  
SINGLE TRACK  
SLIDING PANEL SYSTEM

TYPE XD.3  
SINGLE TRACK  
SLIDING PANEL SYSTEM



GENERAL NOTES:

1. BASIS OF DESIGN: NANAWALL SL70 & HSW60 RESPECTIVELY.
2. SEE SPECIFICATIONS SECTION 084115 OPERABLE GLAZED PANEL SYSTEMS
3. FOR GLAZING REQUIREMENTS, SEE SPECIFICATIONS SECTIONS 084115 OPERABLE GLAZED PANEL SYSTEMS AND 08000 GLAZING
4. FOR MISCELLANEOUS DOOR HARDWARE REQUIREMENTS (NOT PROVIDED BY THE MANUFACTURER), REFER TO THE DOOR SCHEDULE AND SPECIFICATION SECTION 087100