

274 SOUTH RIVER ROAD
NEW HOPE, PA 18938

OWNER/ OPERATOR:
GATEWAY TO NEW HOPE, LLC
274 South River Road
New Hope, PA 18938

ARCHITECT:
STOKES ARCHITECTURE
1700 Sansom Street
Philadelphia, PA 19103
tel: (215) 523-9190

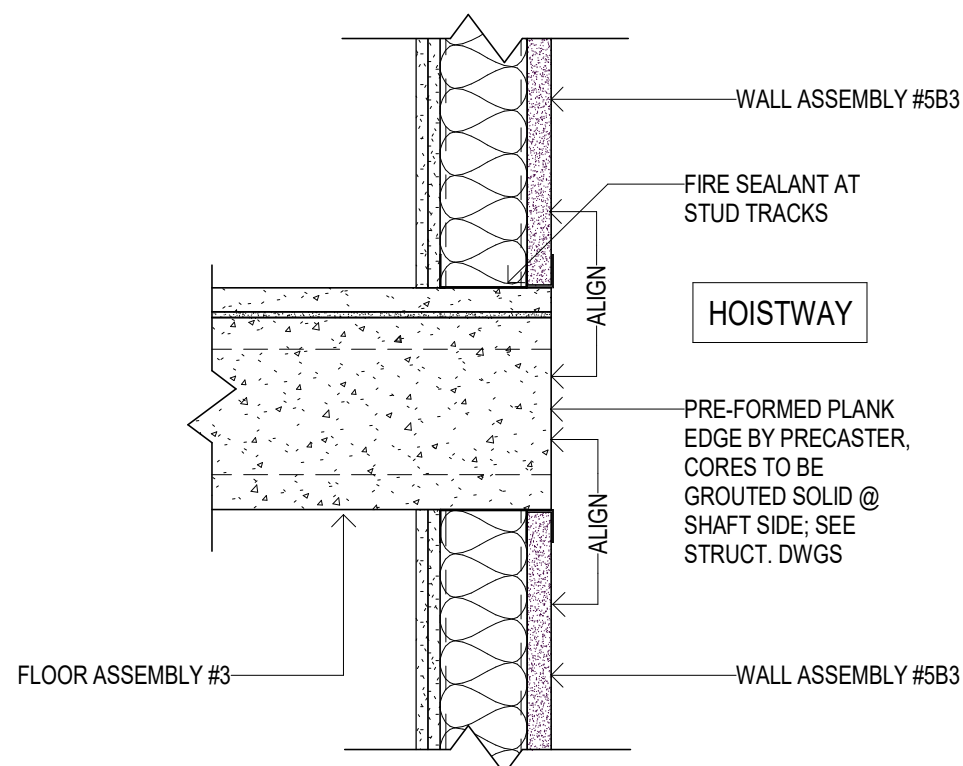
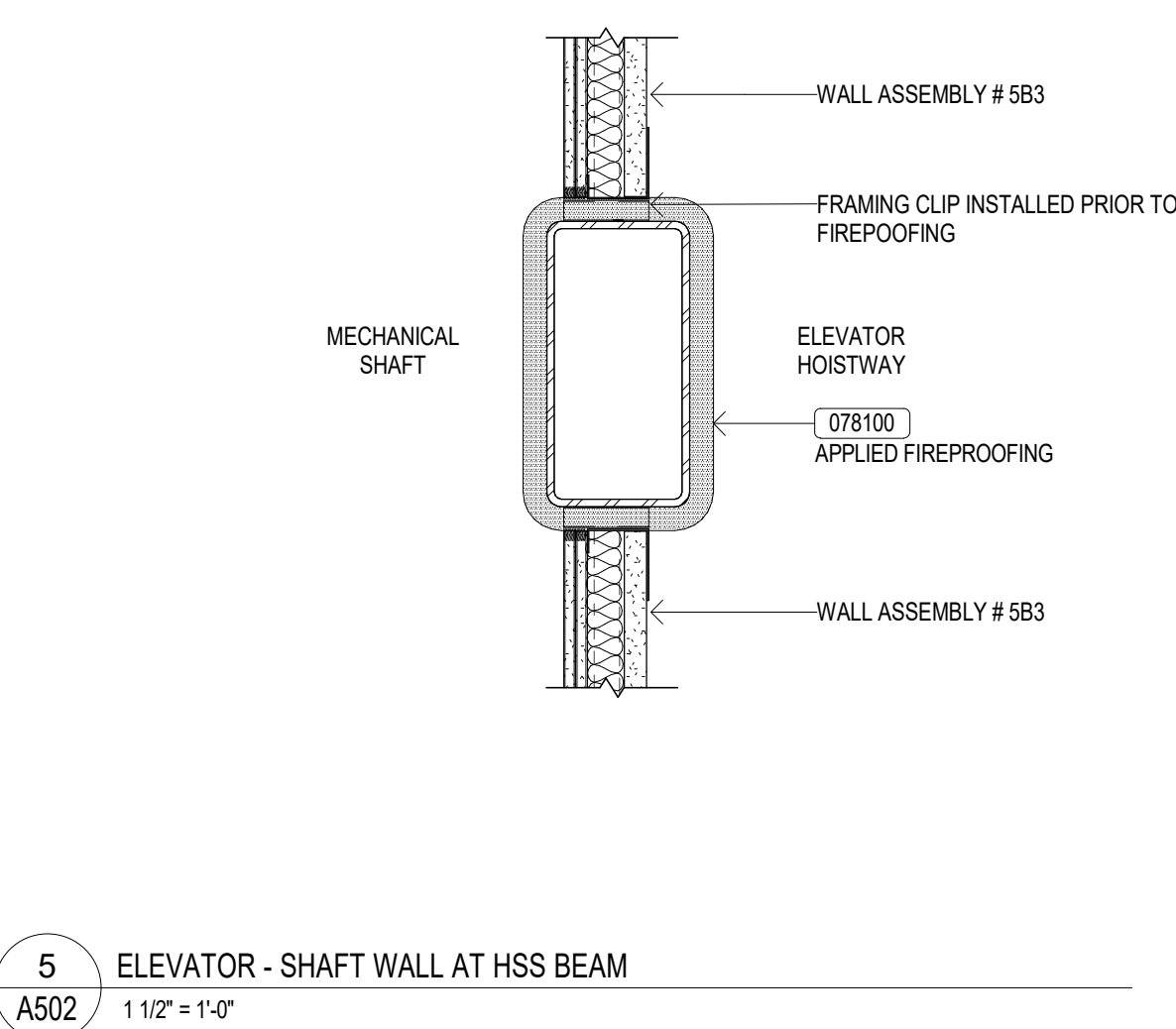
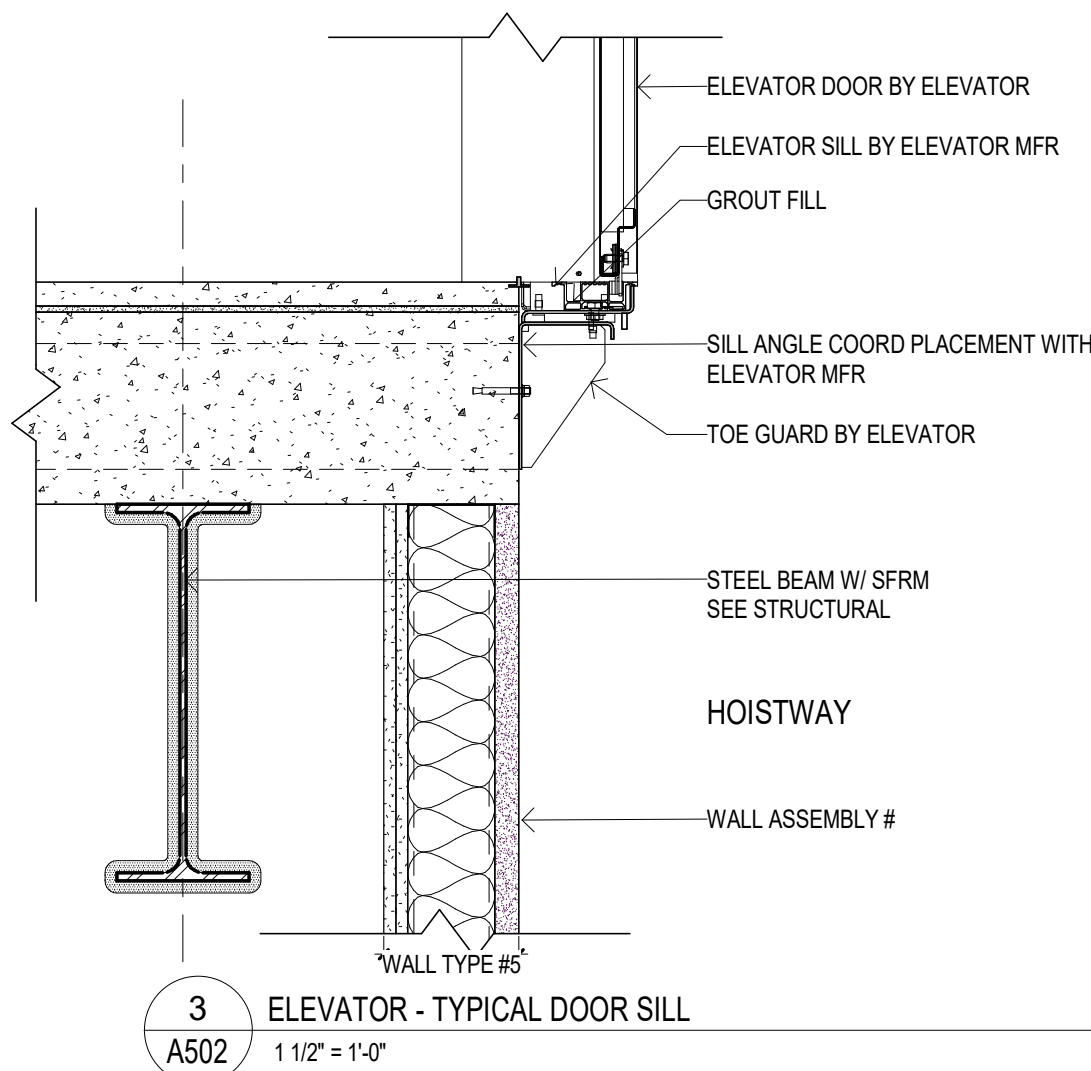
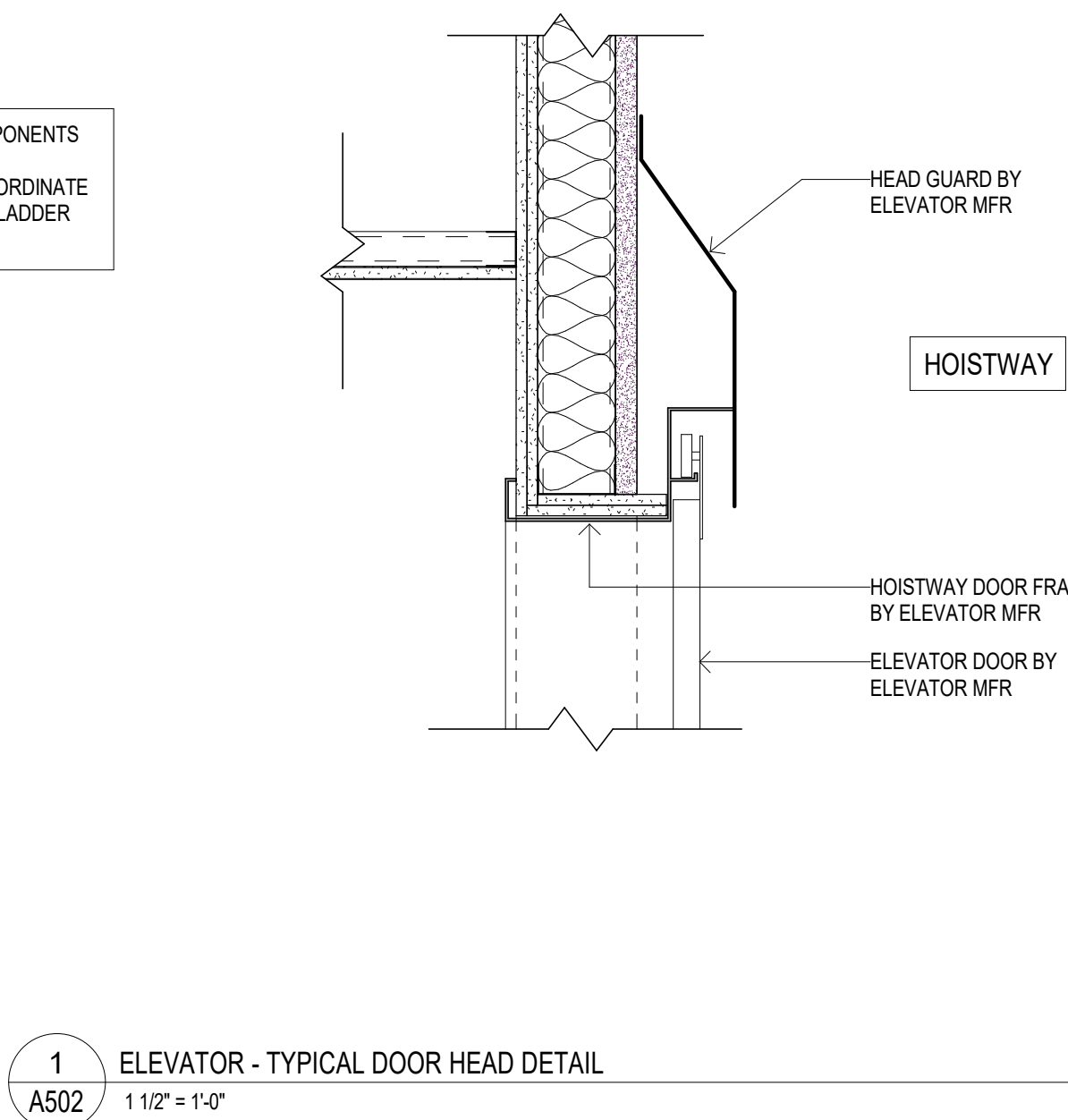
INTERIOR DESIGNER
BALONGUE DESIGN INC
707 Matsonford Road
Villanova, PA 19085
tel: (610) 525-7593
fax: (610) 525-7594

CIVIL ENGINEER:
VAN CLEEF ENGINEERING
ASSOCIATES, LLC
501 North Main Street
Doylestown, PA 18901
tel: (215) 345-1876
fax: (215) 345-1730

STRUCTURAL ENGINEER:
O'DONNELL & NACCARATO
111 S. Independence Mall East Suite 950
Philadelphia, PA 19106
tel: (215) 925-3788

MEP ENGINEER:
WICK FISHER WHITE
111 S. Independence Mall East Suite 400
Philadelphia, PA 19106
tel: (215) 627-0200
fax: (215) 627-8240

LIGHTING DESIGNER
RIAN ORTER LIGHTING DESIGN LLC
 227 W. 29th St 8th Floor
 New York, NY 10001
 tel: (646) 502-7568



0	ISSUE FOR PERMIT	2019-0228
MARK	REVISIONS	DATE

ALL DIMENSIONS AND RELATIONSHIPS MUST BE VERIFIED BY CONTRACTOR. THE ARCHITECT IS TO BE NOTIFIED OF ANY DISCREPANCIES BEFORE PROCEEDING WITH THE CONSTRUCTION. DO NOT SCALE FROM DRAWINGS.

PROJECT #:	1351
FILENAME:	Odettes.v2017.current.rvt
DRAWN:	Author
CHECKED:	Checker
DATE:	2019-02-28

PERMIT SET

ELEVATOR DETAILS

DRAWING

A502