

SPECIFICATION LEGEND

Item Description  
07 24 20 Direct Applied Exterior Finish System  
09 29 00 Painted Gypsum Ceiling Wallboard

RCP - GENERAL NOTES:

1. ALL DIMENSIONS OF FIXTURES, DEVICES, ETC. ARE TO CENTERLINE OF FIXTURE, U.O.N. WHERE ITEMS ARE IN LINE, CENTERLINE OF ITEMS OR GROUP OF ITEMS TO ALIGN, U.O.N.
2. ACT CEILING TO BE CENTERED IN ALL ROOMS, U.O.N. REFER TO CEILING LAYOUT FOR GRID LINE OR TILE TO BE CENTERED. CUT CEILING TILES TO BE 6" MINIMUM (NOTIFY ARCHITECT/DESIGNER IF LESS, PRIOR TO CONSTRUCTION).
3. ALL WORK SHALL COMPLY WITH FEDERAL, STATE AND LOCAL BUILDING CODES AND REGULATIONS.
4. ALL MEP-FP DEVICE LOCATIONS NOT SHOWN ON DRAWINGS, OR IN CONFLICT WITH MEP-FP DRAWINGS, ARE TO BE COORDINATED WITH ARCHITECT PRIOR TO INSTALLATION. SPRINKLER HEADS SHOWN FOR ARCHITECTURAL DESIGN INTENT ONLY, NOT FOR CODE DISTRIBUTION. SEE FIRE PROTECTION DRAWINGS FOR DISTRIBUTION AND HYDRAULIC CALCULATIONS.
5. REFER TO INTERIOR DESIGN DRAWINGS FOR FINISHES NOT NOTED ON ARCHITECTURAL PLANS.
6. MECHANICAL AND ELECTRICAL EQUIPMENT SHALL BE INSTALLED ABOVE THE REGULATORY FLOOD ELEVATION (+8.00) ABOVE (R-50 DRAIN).
7. 09 54 29 BASIS OF DESIGN: RULON ENDURE 900 PROFILE, COLOR TBD
8. 09 54 29 BASIS OF DESIGN: RULON ENDURE 900 PROFILE, WOOD GRAIN FINISH TBD
9. 09 54 29 BASIS OF DESIGN: RULON ENDURE 900 PROFILE, WOOD GRAIN FINISH TBD

RCP NOTES

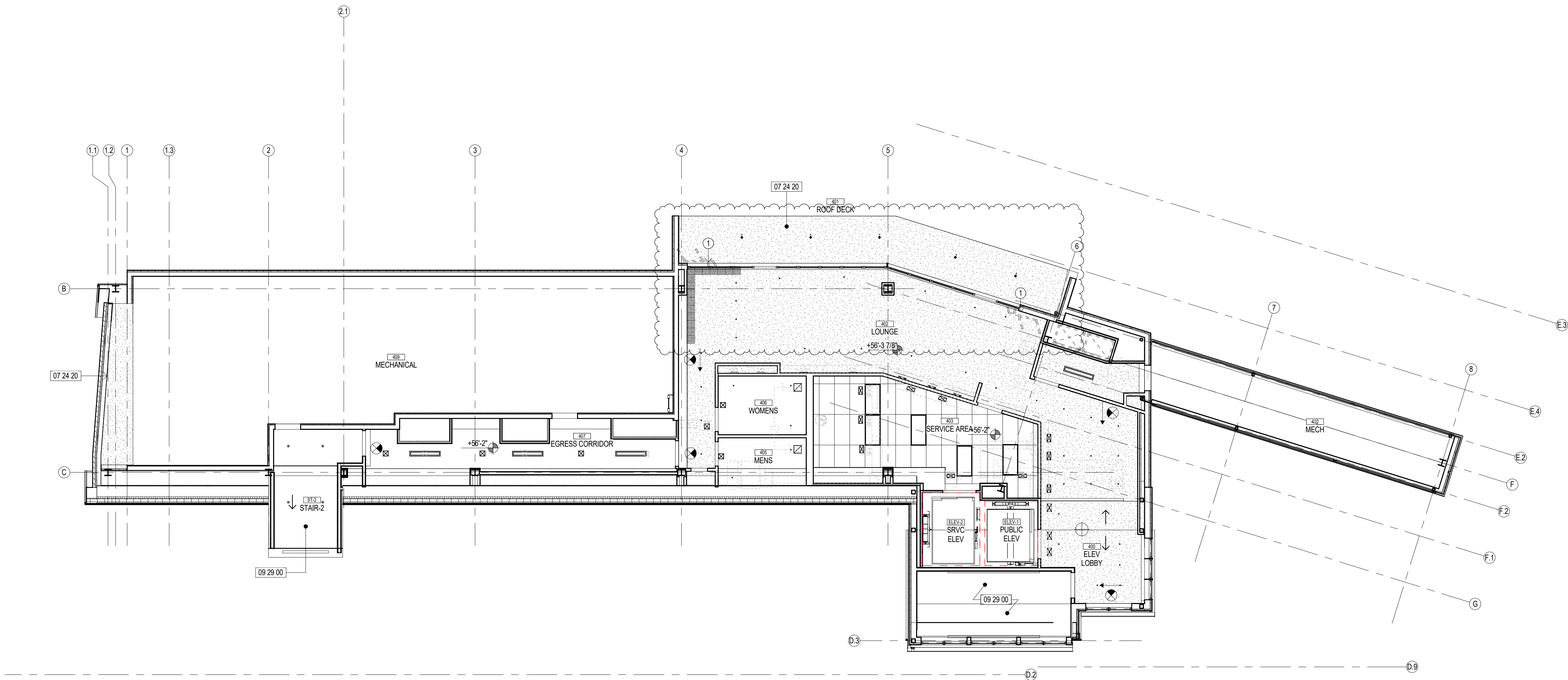
1. PROVIDE MISC. METAL SUPPORTS & ANGLES AS REQUIRED BY OPERABLE PARTITION MNFR. REFER TO MNFR. SPECIFIC DETAILS FOR ADDITIONAL INFORMATION

CEILING LEGEND

- LINEAR PLASTIC CEILING
- SYNTHETIC WOOD CEILING
- CONTINUOUS INSULATION CLADDING
- DIRECT APPLIED EXTERIOR FINISH SYSTEM
- SUPPLY DIFFUSER
- RETURN DIFFUSER
- SLOT DIFFUSER
- ACCESS PANEL
- 2' X 2' ACOUSTICAL PANEL CEILING
- 2' X 4' ACOUSTICAL PANEL CEILING

LIGHTING LEGEND

- 2'X4' RECESSED
- 2'X2' RECESSED
- FLUSH MOUNT STRIP UTILITY
- WALL MTD.
- ROUND RECESSED
- SQUARE RECESSED
- ROUND RECESSED
- SQUARE RECESSED
- DECORATIVE PENDANT
- DECORATIVE PENDANT
- TAPE LIGHT
- ROUND FLUSH MOUNT
- STEP LIGHT
- EXTERIOR WALL PACK
- EXTERIOR INFRARED HEATER



RIVERHOUSE AT Odette's

274 SOUTH RIVER ROAD  
NEW HOPE, PA 18938

OWNER/ OPERATOR:  
GATEWAY TO NEW HOPE, LLC  
274 South River Road  
New Hope, PA 18938

ARCHITECT:  
STOKES ARCHITECTURE  
1700 Sansom Street  
Philadelphia, PA 19103  
tel: (215) 523-9190

INTERIOR DESIGNER  
BALONGUE DESIGN INC  
707 Matsonford Road  
Villanova, PA 19085  
tel: (610) 525-7593  
fax: (610) 525-7594

CIVIL ENGINEER:  
VAN CLEEF ENGINEERING  
ASSOCIATES, LLC  
501 North Main Street  
Doylestown, PA 18901  
tel: (215) 345-1076  
fax: (215) 345-1730

STRUCTURAL ENGINEER:  
O'DONNELL & NACCARATO  
111 S. Independence Mall East Suite 950  
Philadelphia, PA 19106  
tel: (215) 925-3788

MEP ENGINEER:  
WICK FISHER WHITE  
111 S. Independence Mall East Suite 400  
Philadelphia, PA 19106  
tel: (215) 627-0200  
fax: (215) 627-0240

LIGHTING DESIGNER  
BRIAN ORTER LIGHTING DESIGN LLC  
227 W. 29th St 8th Floor  
New York, NY 10001  
tel: (646) 502-7568

STOKES.  
ARCHITECTURE + DESIGN  
STOKESARCH.COM

SEAL


1	GENERAL REVISIONS	2019-0229
0	ISSUE FOR PERMIT	2019-0228

MARK	REVISIONS	DATE
------	-----------	------

ALL DIMENSIONS AND RELATIONSHIPS MUST BE VERIFIED BY CONTRACTOR. THE ARCHITECT IS TO BE NOTIFIED OF ANY DISCREPANCIES BEFORE PROCEEDING WITH THE CONSTRUCTION. DO NOT SCALE FROM DRAWINGS.

PROJECT #:	1351
FILENAME:	Odettes.v2017.current.rvt
DRAWN:	RV
CHECKED:	DF
DATE:	2019-0228

PERMIT SET

PENTHOUSE REFLECTED  
CEILING PLAN

DRAWING

A114

1 PENTHOUSE REFLECTED CEILING PLAN  
A114 1/8" = 1'-0"