

SPECIFICATION LEGEND

Item Description
06 65 50

RCP - GENERAL NOTES:

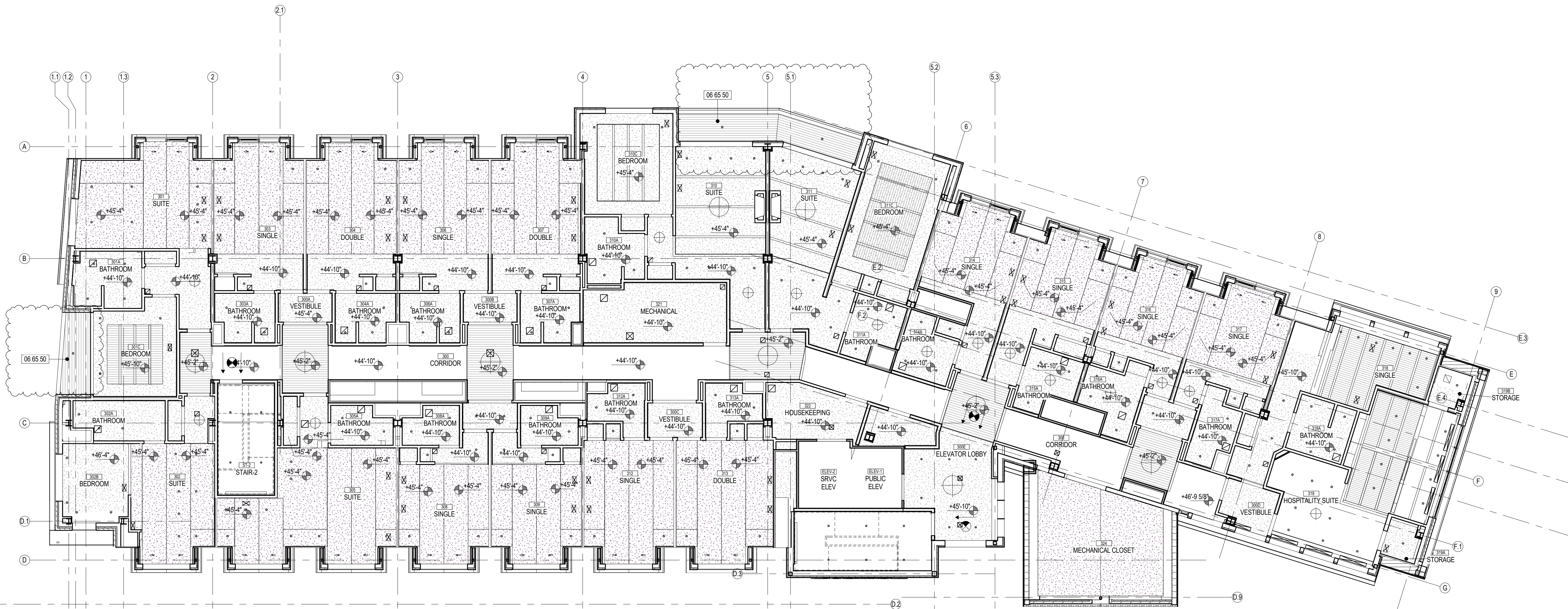
1. ALL DIMENSIONS OF FIXTURES, DEVICES, ETC. ARE TO CENTERLINE OF FIXTURE, U.O.N. WHERE ITEMS ARE IN LINE. CENTERLINE OF ITEMS OR GROUP OF ITEMS TO ALIGN U.O.N.
2. ACT CEILING TO BE CENTERED IN ALL ROOMS. U.O.N. REFER TO CEILING LAYOUT FOR GRID LINE OR TILE TO BE CENTERED. CUT CEILING TILES TO BE 6" MINIMUM (NOTIFY ARCHITECT/DESIGNER IF LESS. PRIOR TO CONSTRUCTION).
3. ALL WORK SHALL COMPLY WITH FEDERAL, STATE AND LOCAL BUILDING CODES AND REGULATIONS.
4. ALL MEP-FP DEVICE LOCATIONS NOT SHOWN ON DRAWINGS, OR IN CONFLICT WITH MEP-FP DRAWINGS, ARE TO BE COORDINATED WITH ARCHITECT PRIOR TO INSTALLATION.
5. SPRINKLER HEADS SHOWN FOR ARCHITECTURAL DESIGN INTENT ONLY. NOT FOR CODE DISTRIBUTION. SEE FIRE PROTECTION DRAWINGS FOR DISTRIBUTION AND HYDRAULIC CALCULATIONS.
6. REFER TO INTERIOR DESIGN DRAWINGS FOR FINISHES NOT NOTED ON ARCHITECTURAL PLANS.
7. MECHANICAL AND ELECTRICAL EQUIPMENT SHALL BE INSTALLED ABOVE THE REGULATORY FLOOD ELEVATION (+44.00) ABOVE (+50.00 BALCONY).
8. 09 54 29 BASIS OF DESIGN: RULON ENDURE 900 PROFILE, COLOR TBD
9. 09 54 29 BASIS OF DESIGN: RULON ENDURE 900 PROFILE, WOOD GRAIN FINISH TBD

CEILING LEGEND

- LINEAR PLASTIC CEILING
- SYNTHETIC WOOD CEILING
- CONTINUOUS INSULATION CLADDING
- DIRECT APPLIED EXTERIOR FINISH SYSTEM
- SUPPLY DIFFUSER
- RETURN DIFFUSER
- SLOT DIFFUSER
- ACCESS PANEL
- 2' X 2' ACOUSTICAL PANEL CEILING
- 2' X 4' ACOUSTICAL PANEL CEILING

LIGHTING LEGEND

- 2'X4' RECESSED
- 2'X2' RECESSED
- FLUSH MOUNT STRIP UTILITY
- WALL MTD.
- ROUND RECESSED
- SQUARE RECESSED
- ROUND RECESSED
- SQUARE RECESSED
- DECORATIVE PENDANT
- DECORATIVE PENDANT
- TAPE LIGHT
- ROUND FLUSH MOUNT
- STEP LIGHT
- EXTERIOR WALL PACK
- EXTERIOR INFRARED HEATER



RIVERHOUSE AT
Odette's

274 SOUTH RIVER ROAD
NEW HOPE, PA 18938

OWNER/ OPERATOR:
GATEWAY TO NEW HOPE, LLC
274 South River Road
New Hope, PA 18938

ARCHITECT:
STOKES ARCHITECTURE
1700 Sansom Street
Philadelphia, PA 19103
tel: (215) 523-9190

INTERIOR DESIGNER
BALONGUE DESIGN INC
707 Matsonford Road
Villanova, PA 19085
tel: (610) 525-7593
fax: (610) 525-7594

CIVIL ENGINEER:
VAN CLEEF ENGINEERING
ASSOCIATES, LLC
501 North Main Street
Doylestown, PA 18901
tel: (215) 345-1076
fax: (215) 345-1730

STRUCTURAL ENGINEER:
O'DONNELL & NACCARATO
111 S. Independence Mall East Suite 950
Philadelphia, PA 19106
tel: (215) 925-3788

MEP ENGINEER:
WICK FISHER WHITE
111 S. Independence Mall East Suite 400
Philadelphia, PA 19106
tel: (215) 627-0200
fax: (215) 627-4540

LIGHTING DESIGNER
BRIAN ORTER LIGHTING DESIGN LLC
227 W. 29th St 8th Floor
New York, NY 10001
tel: (646) 502-7568

STOKES.
ARCHITECTURE + DESIGN
STOKESARCH.COM

SEAL

1 GENERAL REVISIONS 2019-0229

0 ISSUE FOR PERMIT 2019-0228

MARK REVISIONS DATE

ALL DIMENSIONS AND RELATIONSHIPS MUST BE VERIFIED BY CONTRACTOR. THE ARCHITECT IS TO BE NOTIFIED OF ANY DISCREPANCIES BEFORE PROCEEDING WITH THE CONSTRUCTION. DO NOT SCALE FROM DRAWINGS.

PROJECT #: 1351
FILENAME: Odettes.v2017.current.rvt
DRAWN: J-C
CHECKED: RS
DATE: 2019-0228

PERMIT SET

THIRD FLOOR REFLECTED
CEILING PLAN

DRAWING

A113