

SPECIFICATION LEGEND

Item	Description
06 65 50	
09 29 00	Painted Gypsum Ceiling Wallboard

RCP - GENERAL NOTES:

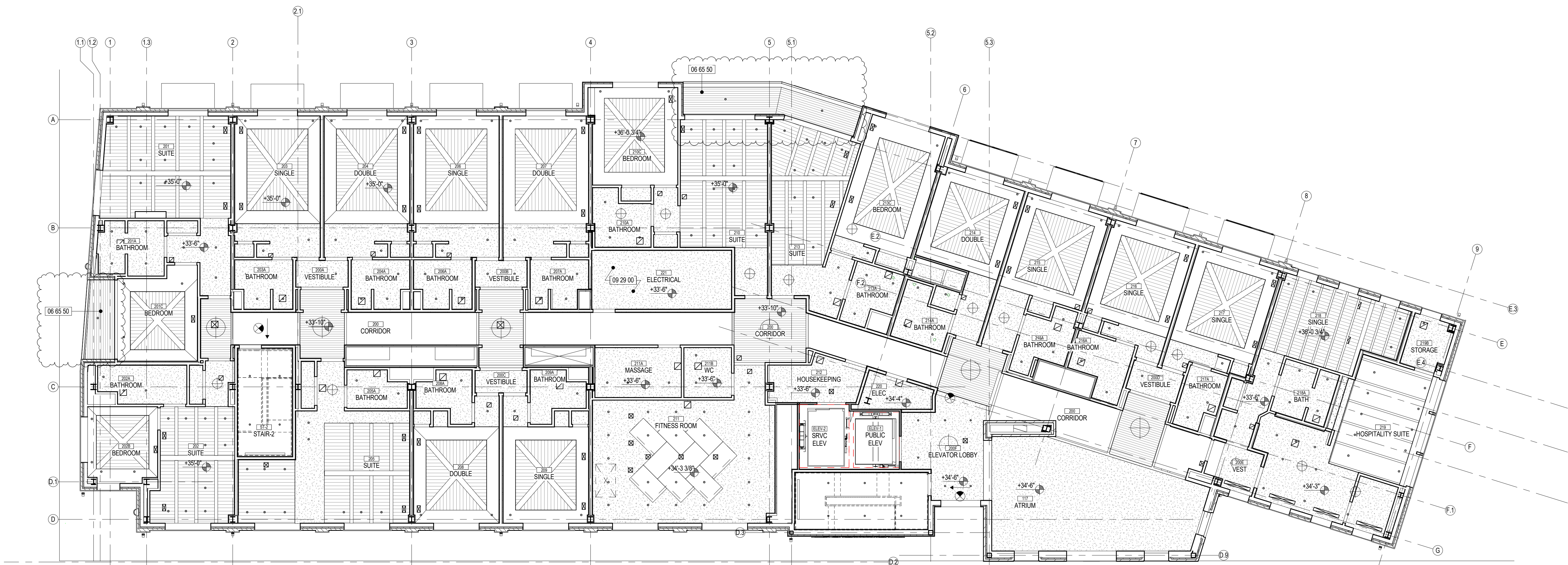
1. ALL DIMENSIONS OF FIXTURES, DEVICES, ETC. ARE TO CENTERLINE OF FIXTURE, U.O.N. WHERE ITEMS ARE IN LINE. CENTERLINE OF ITEMS OR GROUP OF ITEMS TO ALIGN, U.O.N.
2. ACT CEILING TO BE CENTERED IN ALL ROOMS, U.O.N. REFER TO CEILING LAYOUT FOR GRID LINE OR TILE TO BE CENTERED. CUT CEILING TILES TO BE 6" MINIMUM (NOTIFY ARCHITECT/DESIGNER IF LESS, PRIOR TO CONSTRUCTION).
3. ALL WORK SHALL COMPLY WITH FEDERAL, STATE AND LOCAL BUILDING CODES AND REGULATIONS.
4. ALL MEP-FP DEVICE LOCATIONS NOT SHOWN ON DRAWINGS, OR IN CONFLICT WITH MEP-FP DRAWINGS, ARE TO BE COORDINATED WITH ARCHITECT PRIOR TO INSTALLATION.
5. SPRINKLER HEADS SHOWN FOR ARCHITECTURAL DESIGN INTENT ONLY, NOT FOR CODE DISTRIBUTION. SEE FIRE PROTECTION DRAWINGS FOR DISTRIBUTION AND HYDRAULIC CALCULATIONS.
6. REFER TO INTERIOR DESIGN DRAWINGS FOR FINISHES NOT NOTED ON ARCHITECTURAL PLANS.
7. MECHANICAL AND ELECTRICAL EQUIPMENT SHALL BE INSTALLED ABOVE THE REGULATORY FLOOD ELEVATION, (+8.00) ABOVE (+8.00) DATUM.
8. 09 54 29 BASIS OF DESIGN: RULON ENDURE 900 PROFILE, COLOR TBD
9. 09 54 29 BASIS OF DESIGN: RULON ENDURE 900 PROFILE, WOOD GRAIN FINISH TBD

CEILING LEGEND

	LINEAR PLASTIC CEILING
	SYNTHETIC WOOD CEILING
	CONTINUOUS INSULATION CLADDING
	DIRECT APPLIED EXTERIOR FINISH SYSTEM
	SUPPLY DIFFUSER
	RETURN DIFFUSER
	SLOT DIFFUSER
	ACCESS PANEL
	2 X 2 ACOUSTICAL PANEL CEILING
	2 X 4 ACOUSTICAL PANEL CEILING

LIGHTING LEGEND

	2'X4' RECESSED
	2'X2' RECESSED
	FLUSH MOUNT STRIP UTILITY
	WALL MTD.
	ROUND RECESSED
	SQUARE RECESSED
	DECORATIVE PENDANT
	TAPE LIGHT
	ROUND FLUSH MOUNT
	STEP LIGHT
	EXTERIOR WALL PACK
	EXTERIOR INFRARED HEATER



RIVERHOUSE AT Odette's

274 SOUTH RIVER ROAD
NEW HOPE, PA 18938

OWNER/ OPERATOR:
GATEWAY TO NEW HOPE, LLC
274 South River Road
New Hope, PA 18938

ARCHITECT:
STOKES ARCHITECTURE
1700 Sansom Street
Philadelphia, PA 19103
tel: (215) 523-9190

INTERIOR DESIGNER
BALONGUE DESIGN INC
707 Matsonford Road
Villanova, PA 19085
tel: (610) 525-7593
fax: (610) 525-7594

CIVIL ENGINEER:
VAN CLEEF ENGINEERING
ASSOCIATES, LLC
501 North Main Street
Doylestown, PA 18901
tel: (215) 345-1076
fax: (215) 345-1730

STRUCTURAL ENGINEER:
O'DONNELL & NACCARATO
111 S. Independence Mall East Suite 950
Philadelphia, PA 19106
tel: (215) 925-3788

MEP ENGINEER:
WICK FISHER WHITE
111 S. Independence Mall East Suite 400
Philadelphia, PA 19106
tel: (215) 627-0200
fax: (215) 627-4540

LIGHTING DESIGNER
BRIAN ORTER LIGHTING DESIGN LLC
227 W. 29th St 8th Floor
New York, NY 10001
tel: (646) 502-7568

STOKES.
ARCHITECTURE + DESIGN
STOKESARCH.COM

SEAL

MARK	REVISIONS	DATE
1	GENERAL REVISIONS	2019-02-29
0	ISSUE FOR PERMIT	2019-02-28

ALL DIMENSIONS AND RELATIONSHIPS MUST BE VERIFIED BY CONTRACTOR. THE ARCHITECT IS TO BE NOTIFIED OF ANY DISCREPANCIES BEFORE PROCEEDING WITH THE CONSTRUCTION. DO NOT SCALE FROM DRAWINGS.

PROJECT #:	1351
FILENAME:	Odettes.v2017.current.rvt
DRAWN:	J.C.
CHECKED:	RS
DATE:	2019-02-28

PERMIT SET

SECOND FLOOR
REFLECTED CEILING PLAN

DRAWING

A112

1 SECOND FLOOR REFLECTED CEILING PLAN
A112 1/8" = 1'-0"