

SPECIFICATION LEGEND

Item Description
06 15 35 Modular Wood Patio Decking
07 54 23 TPO Roofing
09 80 00 Exterior Sound Attenuating Panels

PLAN - GENERAL NOTES:

1. ALL WORK SHALL COMPLY WITH CURRENT FEDERAL, STATE, AND LOCAL BUILDING CODES AND REGULATIONS, TRADE STANDARDS, AND MANUFACTURER'S INSTRUCTIONS REFERENCED IN THE CONTRACT DOCUMENTS.
2. NOTIFY ARCHITECT/DESIGNER OF ANY CONFLICTS BETWEEN SITE CONDITIONS AND DRAWINGS BEFORE PROCEEDING WITH CORRECTIVE MEASURES.
3. ALL DRAWINGS SHALL BE FULLY COORDINATED BY CONTRACTOR TO VERIFY ALL DIMENSIONS, DERESSED SLABS, SLOPES, DRAINS, OUTLETS, RECESSES, REGLETS, BOLT SETTINGS, SLEEVES, ETC.
4. ALL STRUCTURAL DRAWINGS SHALL BE USED IN CONJUNCTION WITH THE ARCHITECTURAL, MECHANICAL, ELECTRICAL, SHOP DRAWINGS AND SPECIFICATIONS. DETAILS AND SECTIONS ON THE DRAWINGS ARE SHOWN AT SPECIFIC LOCATIONS. DETAILS NOTED "TYPICAL" OR "TYP" OR "SIM" IMPLY ALL CONDITIONS TREATED SIMILARLY; MODIFICATIONS TO BE MADE BY CONTRACTOR TO ACCOMMODATE MINOR VARIATION.
5. ALL DIMENSIONS ARE TO FINISHED FACE OF WALL UNLESS NOTED OTHERWISE.
6. DRAWINGS ARE NOT TO BE SCALED; VERIFY ANY MISSING OR CONFLICTING WRITTEN DIMENSIONS WITH THE ARCHITECT/DESIGNER PRIOR TO CONSTRUCTION.
7. SEE SHEET A606 FOR PARTITION TYPES
8. REVIEW LAYOUTS FOR PARTITIONS IN FIELD WITH THE OWNER AND ARCHITECT/DESIGNER PRIOR TO START OF CONSTRUCTION.
9. COORDINATE BLOCKING REQUIREMENTS AND LOCATIONS WITH ELEVATIONS AND DETAILS. ALL BLOCKING TO BE FIRE RETARDANT.
10. WINDOW M.O. & R.O. DIMENSIONS ARE BASED ON MARVIN WINDOWS. REFER TO A 604 FOR ADDITIONAL INFORMATION REGARDING SERIES AND MODEL COORDINATION OF MNFR. REQUIRED WINDOW DIMENSIONS AS A RESULT OF SUBSTITUTION SHALL BE THE SOLE RESPONSIBILITY OF THE GC. SEE A604 FOR ADDITIONAL INFORMATION.

RIVERHOUSE AT Odette's

274 SOUTH RIVER ROAD
NEW HOPE, PA 18938

OWNER/ OPERATOR:
GATEWAY TO NEW HOPE, LLC
274 South River Road
New Hope, PA 18938

ARCHITECT:
STOKES ARCHITECTURE
1700 Sansom Street
Philadelphia, PA 19103
tel: (215) 523-9190

INTERIOR DESIGNER
BALONGUE DESIGN INC
707 Matsonford Road
Villanova, PA 19085
tel: (610) 525-7593
fax: (610) 525-7594

CIVIL ENGINEER:
VAN CLEEF ENGINEERING
ASSOCIATES, LLC
501 North Main Street
Doylestown, PA 18901
tel: (215) 345-1876
fax: (215) 345-1730

STRUCTURAL ENGINEER:
O'DONNELL & NACCARATO
111 S. Independence Mall East Suite 950
Philadelphia, PA 19106
tel: (215) 925-3788

MEP ENGINEER:
WICK FISHER WHITE
111 S. Independence Mall East Suite 400
Philadelphia, PA 19106
tel: (215) 627-0200
fax: (215) 627-4540

LIGHTING DESIGNER
BRIAN ORTER LIGHTING DESIGN LLC
227 W. 29th St 8th Floor
New York, NY 10001
tel: (646) 502-7568

STOKES.
ARCHITECTURE + DESIGN
STOKESARCH.COM

SEAL

MARK	REVISIONS	DATE
1	GENERAL REVISIONS	2019-02-29
0	ISSUE FOR PERMIT	2019-02-28

ALL DIMENSIONS AND RELATIONSHIPS MUST BE VERIFIED BY CONTRACTOR. THE ARCHITECT IS TO BE NOTIFIED OF ANY DISCREPANCIES BEFORE PROCEEDING WITH THE CONSTRUCTION. DO NOT SCALE FROM DRAWINGS.

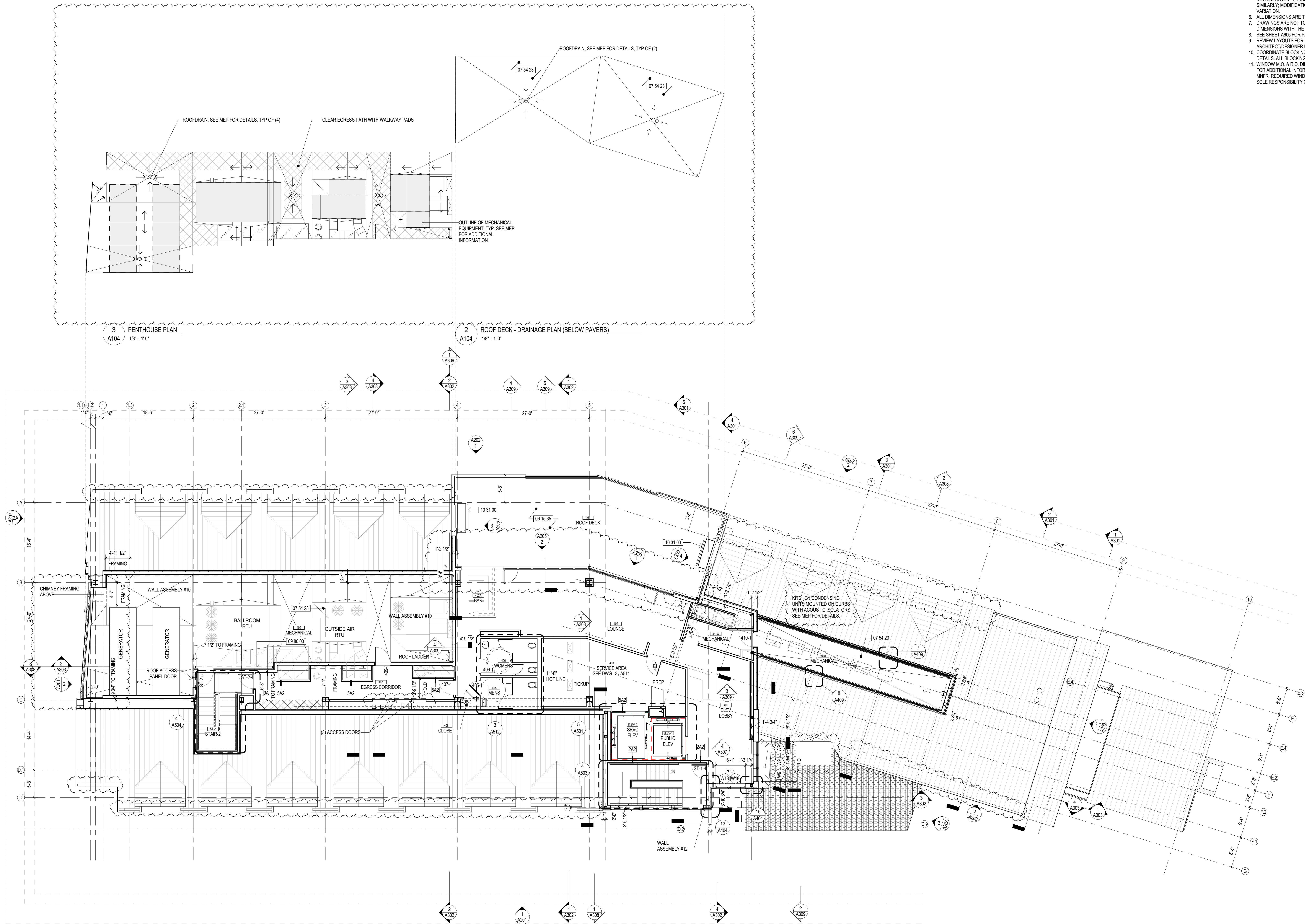
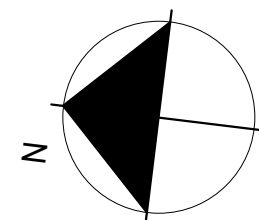
PROJECT #: 1351
FILENAME: Odettes.v2017.current.rvt
DRAWN: JC
CHECKED: RS
DATE: 2019-02-28

PERMIT SET

PENTHOUSE PLAN

DRAWING

A104



3 PENTHOUSE PLAN
A104 1/8" = 1'-0"

2 ROOF DECK - DRAINAGE PLAN (BELOW PAVERS)
A104 1/8" = 1'-0"

1 PENTHOUSE PLAN
A104 1/8" = 1'-0"