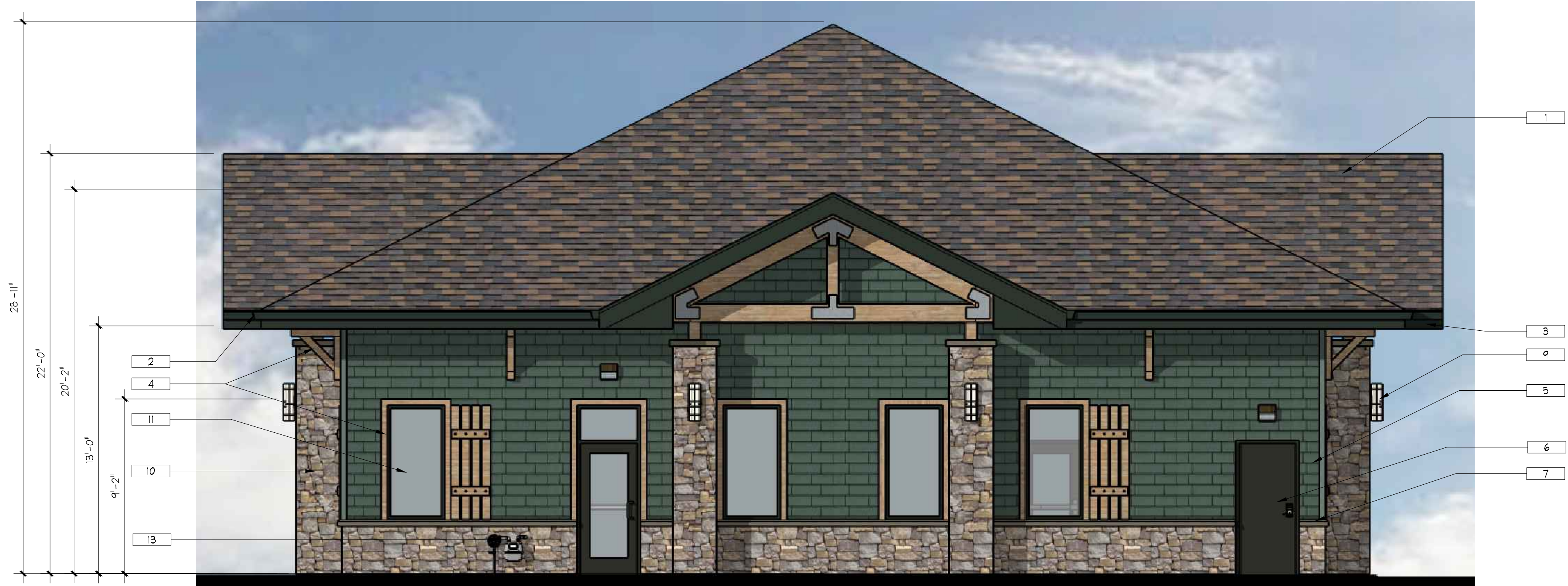


KJW REAL ESTATE, LLC

SITE DEVELOPMENT PLAN

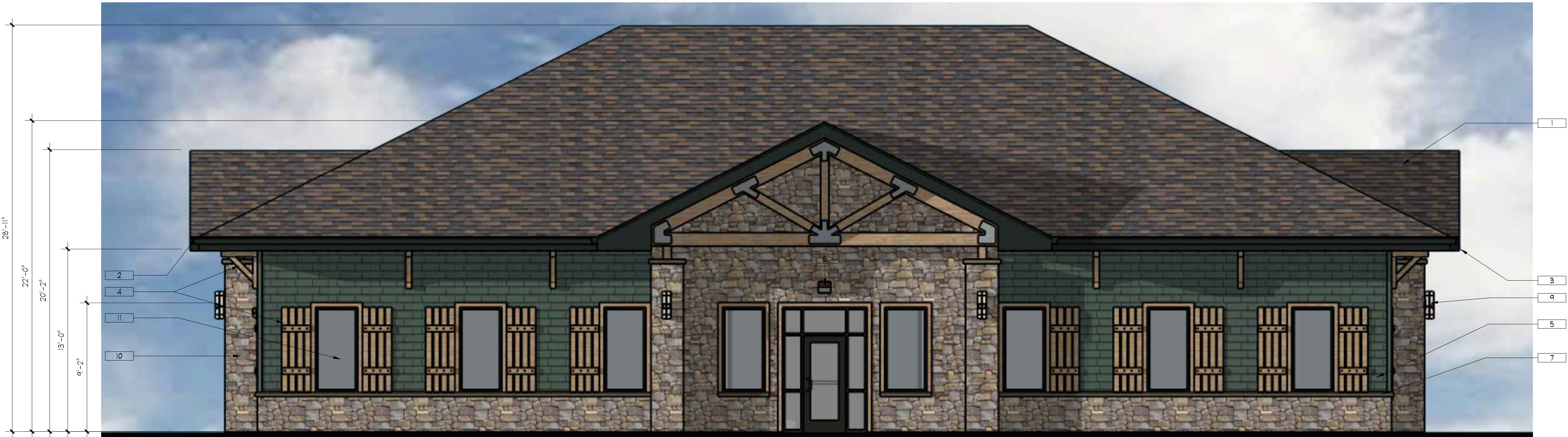
LOT 4, AMENDED GATEWAY PARK FIRST-FILING-PHASE 2 REPLAT D,
COUNTY OF LARIMER, STATE OF COLORADO
(1231 LAKE AVENUE)



KEYNOTES:

- 1 DIMENSIONAL ASPHALT SHINGLES, BROWN TONES
- 2 METAL GUTTERS AND DOWNSPOUTS, DARK GREEN
- 3 WOOD FASCIA, DARK GREEN
- 4 WOOD ACCENTS AND TRUSSES, NATURAL COLOR
- 5 WOOD SHAKE SHINGLE SIDING, SAGE GREEN
- 6 PAINTED HOLLOW METAL DOOR, BLEND WITH STONE
- 7 PRECAST CONCRETE CAPS OR TRIM, BEIGE
- 8 CODE REQUIRED EGRESS LIGHT, DARK BRONZE
- 9 ARCHITECTURAL ACCENT LIGHT, DARK BRONZE
- 10 STONE VENEER, BLEND OF EARTH TONES
- 11 ALUMINUM STOREFRONT DOORS AND WINDOWS, DARK BRONZE
- 12 ELECTRICAL GEAR, PAINTED TO BLEND WITH STONE
- 13 GAS METER, PAINTED TO BLEND WITH STONE

2	EAST ELEVATION
1/4"=1'-0"	



1	NORTH ELEVATION
1/4"=1'-0"	

HCI
ENGINEERING
A DIVISION OF
HABERER CARPENTRY INC.
621 SOUTHPARK DR., SUITE 1600
LITTLETON CO, 80120
PHONE: (303) 979-3900
INFO@HABERERGROUP.COM

BATTISTA
DESIGN GROUP
3850 Wadsworth Boulevard
Wheat Ridge, Colorado 80033
Phone: 303-428-4865
Fax: 303-428-5472
Email: info@battistadesign.net
www.battistadesign.net

Know what's below.
Call before you dig.
811
CALL 811 2-BUSINESS DAYS IN
ADVANCE BEFORE YOU DIG.
GRADE, OR EXCAVATE FOR THE
MARKING OF UNDERGROUND
MEMBER UTILITIES.

KJW REAL ESTATE, LLC
SITE DEVELOPMENT PLAN
1231 LAKE AVENUE
BERTHOUD, CO 80537

REVISIONS:

No.	Date:	Description:
1	11.04.24	1st Submittal

Project No: 24_05
Drawn By: ZAH
Checked By: CCH
Date Issued: 04/11/2024
Sheet Name: **COLOR EXTERIOR ELEVATIONS**
Sheet Number:
1 of 3