

ELECTRICAL WHIP W/PIGTAL SCHEDULE

QTY	ITEM #	DESCRIPTION	POWER POLES	NOTES (SEE E10)	LENGTH OF WHIP
1	ID3 - 000MU055	STANDARD STARTING CONNECTOR (BROWN FGTL)	CHECKOUT(3), PROMO(2), COKE, PEPS	1,6	15'-0"
5	ID4-IG - 000MU055A	ISOLATED GROUND STARTING CONNECTOR (GREEN FGTL)	CHECKOUT(3)APP STATIONATM	1,4,1	15'-0"

NOTES:

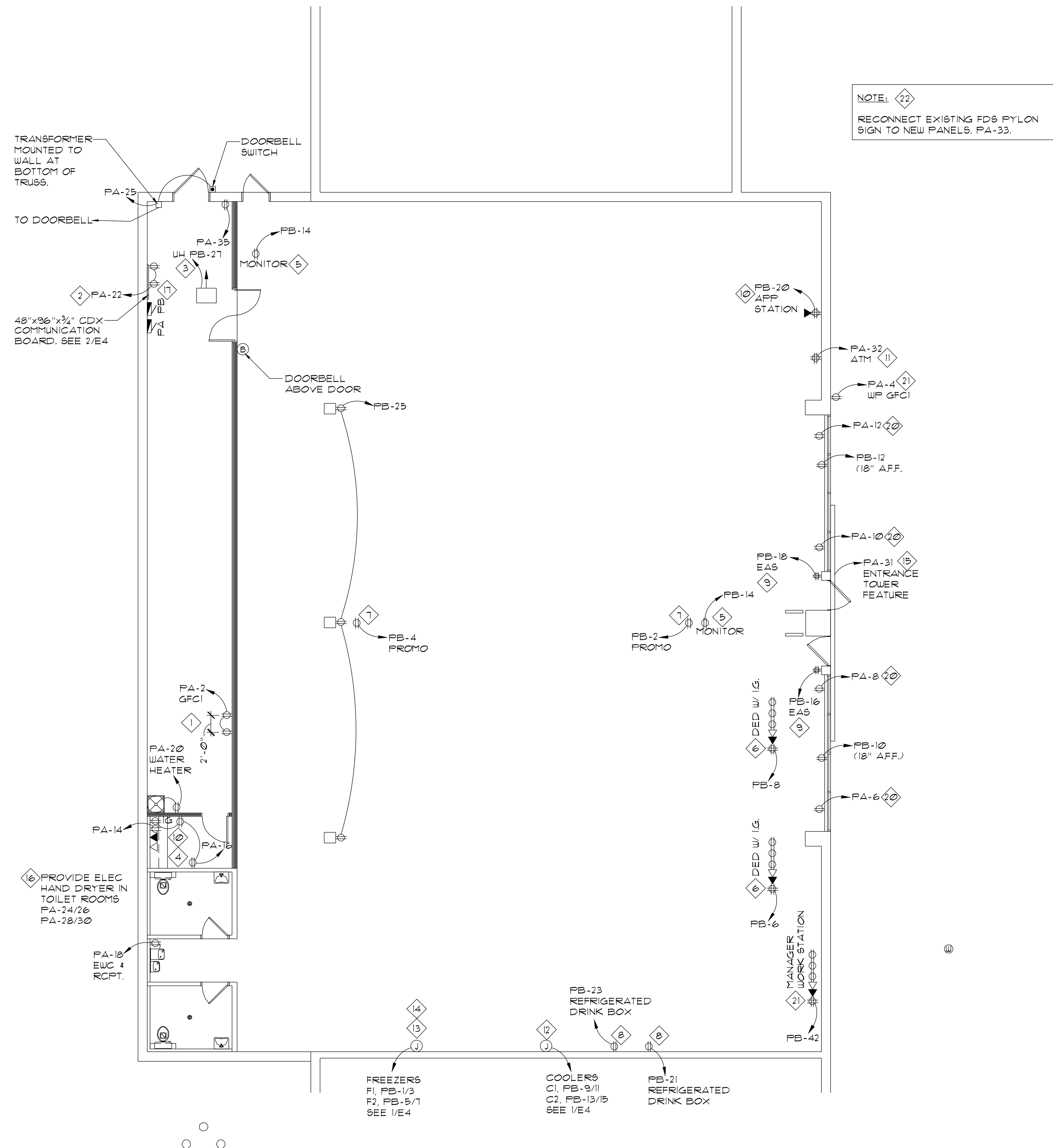
- CONFIRM EXACT LOCATION OF ALL J-BOXES WITH FDS PROJECT MANAGER PRIOR TO INSTALLATION.
- CONTACT DWP CUSTOM LIGHTS AT (800) 251-2200, ATTN: TAMMY FOR WHIPS WITH PIGTAILS FOR CONNECTION TO J-BOXES ABOVE CEILING.
- PROVIDE WHIPS FOR ALL PIGTAIL LOCATIONS (SEE SCHEDULE)

GENERAL POWER PLAN NOTES

- PROVIDE DEDICATED ISOLATED RECEPTACLES WITH ISOLATED GROUNDING CONDUCTOR BACK TO SERVICE GROUND.
- PROVIDE ISOLATED GROUNDING CONDUCTOR BACK TO SERVICE GROUND, AT DEDICATED ISOLATED RECEPTACLES.
- WHERE APPLICABLE, MOUNT PLUG-IN CONNECTOR AT 12'-0" AFF. GENERAL CONTRACTOR WILL MAKE AN ELECTRICIAN AVAILABLE ON THE FIRST WEDNESDAY OF STORE FIXTURING. THE ELECTRICIAN WILL MAKE SURE THAT ALL CONNECTIONS TO POWER POLES WORK PROPERLY. ON OPEN CEILING ELECTRICAL WILL SECURE TOP OF POWER POLE TO CEILING DECK.
- EXTERIOR RECEPTACLES SHALL BE RECESSED IN WALL WITH FACE FLUSH WITH WALL.

ELECTRICAL POWER PLAN KEYED NOTES

- PROVIDE A (1) ONE FOOT PIECE OF 3" CONDUIT RUNNING THROUGH THE SALES SUPPORT WALL AT LOCATIONS AT (3) LOCATIONS. ALL THREE PIECES MUST BE LOCATED 12" ABOVE THE CEILING. ONE PIECE MUST BE CENTERED ON THE WALL AND THE OTHER TWO PIECES MUST BE LOCATED 5" FROM THE LEFT AND RIGHT DEMISING WALL. SAID CONDUIT SHOULD BE FIRE CALKED AND CAPPED AS REQUIRED BY CODE FOR FUTURE USE BY FDS.
- FURNISH AND INSTALL DUPLEX IG ELECTRICAL RECEPTACLE AT NEW COMMUNICATION BOARD. INCLUDE #6CU GROUND WIRE TERMINATED TO BUILDING GROUND. INCLUDE A GROUND BUS BAR ON THE COMMUNICATION BOARD. SEE COMM. BOARD DETAIL ON E3.
- FURNISH AND INSTALL ELECTRICAL CIRCUIT FOR SALES SUPPORT UNIT HEATER.
- PROVIDE ONE (1) BLANK DUPLEX BOX (W/ PULL STRING) WITH 1" CONDUIT RUN UP THROUGH WALL TO ABOVE THE CEILING. IF THE OFFICE IS LOCATED IN SALES SUPPORT RUN CONDUIT UP WALL AND PENETRATE THROUGH SALES SUPPORT WALL. PROVIDE PROPER FIRE SEALANT AS REQUIRED PER CODE WITH END CAP. INSTALL NEXT TO PHONE BOX IN MANAGER'S OFFICE FOR FUTURE USE BY FDS.
- FURNISH AND INSTALL WIRING AND HOOKUP FOR DEDICATED CIRCUIT WITH ISOLATED GROUND FOR SECURITY MONITOR(S). CIRCUIT SHALL BE TERMINATED AT JUNCTION BOX(ES) ABOVE SALES AREA CEILING WITH FINAL CONNECTION MADE TO DUPLEX RECEPTACLE(S). FDS'S OPENING TEAM WILL INSTALL SECURITY MONITOR. VERIFY EXACT LOCATION OF EACH REQUIRED DROP WITH FDS CONSTRUCTION PROJECT MANAGER.
- FURNISH AND INSTALL WIRING AND HOOKUP FOR EACH CASHIERS MODULE INCLUDING: CONVENIENCE CIRCUIT AND DEDICATED CIRCUIT WITH ISOLATED GROUND. CIRCUITS MUST BE TERMINATED AT A JUNCTION BOX MOUNTED ABOVE THE CEILING WITH FINAL CONNECTION MADE TO SPECIAL PLUG-IN 'GREEN AND BROWN PIGTAIL' CONNECTOR. PROVIDE AND INSTALL A 10' WHIP TO PLUG. FDS OUTSIDE VENDOR WILL INSTALL POWER POLES TO FINAL CHECKOUT LOCATIONS BY ATTACHING THESE CONNECTORS. VERIFY EXACT LOCATION OF EACH REQUIRED DROP WITH FDS CONSTRUCTION PROJECT MANAGER. FDS WILL PROVIDE 'GREEN AND BROWN PIGTAIL' CONNECTORS.
- FURNISH AND INSTALL WIRING AND HOOKUP FOR PROMOTIONAL OUTLET. CIRCUIT SHALL BE TERMINATED AT A JUNCTION BOX ABOVE SALES AREA CEILING WITH FINAL CONNECTION MADE TO SPECIAL PLUG-IN 'BROWN PIGTAIL' CONNECTOR. PROVIDE AND INSTALL A 10' WHIP TO PLUG. FDS'S OPENING TEAM WILL INSTALL POWER POLE TO FINAL LOCATION BY ATTACHING TO THIS CONNECTOR. VERIFY LOCATION AND QUANTITY WITH FDS CONSTRUCTION PROJECT MANAGER. FDS WILL PROVIDE 'BROWN PIGTAIL' CONNECTOR(S).
- FURNISH AND INSTALL WIRING AND HOOKUP FOR REFRIGERATED DRINK BOX. CIRCUIT SHALL BE TERMINATED AT A JUNCTION BOX ABOVE SALES AREA CEILING WITH FINAL CONNECTION MADE TO SPECIAL PLUG-IN 'BROWN PIGTAIL' CONNECTOR. PROVIDE AND INSTALL A 10' WHIP TO PLUG. FDS'S OPENING TEAM WILL INSTALL POWER POLE TO FINAL LOCATION BY ATTACHING TO THIS CONNECTOR. VERIFY LOCATION AND QUANTITY WITH FDS CONSTRUCTION PROJECT MANAGER. FDS WILL PROVIDE 'BROWN PIGTAIL' CONNECTOR(S).
- FURNISH AND INSTALL WIRING AND HOOKUP FOR ONE (1) DEDICATED CIRCUIT WITH ISOLATED GROUND WITHIN 5' OF STOREFRONT DOORS FOR FUTURE SECURITY SYSTEM. CIRCUIT SHALL BE TERMINATED AT A DUPLEX OUTLET AT FLOOR LEVEL (HEIGHT ABOVE FLOOR TO MEET ALL LOCAL CODES). VERIFY EXACT LOCATION WITH FDS CONSTRUCTION PROJECT MANAGER.
- FURNISH AND INSTALL WIRING AND HOOKUP FOR APP. STATION AT STOREFRONT. CIRCUIT MUST BE TERMINATED AT A JUNCTION BOX ABOVE SALES AREA CEILING WITH FINAL CONNECTION MADE TO SPECIAL PLUG-IN 'GREEN PIGTAIL' CONNECTOR. PROVIDE AND INSTALL 10' WHIP TO PLUG. FDS'S OUTSIDE VENDOR WILL INSTALL POWER POLE TO FINAL LOCATION BY ATTACHING TO THIS CONNECTOR. VERIFY EXACT LOCATION WITH FDS CONSTRUCTION PROJECT MANAGER. FDS WILL PROVIDE 'GREEN PIGTAIL' CONNECTOR.
- FURNISH AND INSTALL WIRING AND HOOKUP FOR ATM MACHINE AT STOREFRONT. CIRCUIT MUST BE TERMINATED AT A JUNCTION BOX ABOVE SALES AREA CEILING WITH FINAL CONNECTION MADE TO SPECIAL PLUG-IN 'GREEN PIGTAIL' CONNECTOR. PROVIDE AND INSTALL A 10' WHIP TO PLUG. FDS'S OUTSIDE VENDOR WILL INSTALL POWER POLE TO FINAL LOCATION BY ATTACHING TO THIS CONNECTOR. VERIFY EXACT LOCATION WITH FDS CONSTRUCTION PROJECT MANAGER. FDS WILL PROVIDE 'GREEN PIGTAIL' CONNECTOR.
- FURNISH AND INSTALL WIRING 115/208-230-1-60 15 AMP 12 GAUGE DEDICATED CIRCUIT (5) FOR 1 SEPARATE 3 DOOR COOLER CASES. PROVIDE CIRCUITS TO JUNCTION BOX MOUNTED AT 8'-4" AFF. WITH TERMINATION AND LENGTH TO DISCONNECT MADE BY EQUIPMENT INSTALLER. FINAL LOCATION OF THE EQUIPMENT TO BE COORDINATED BY FDS PROJECT MANAGER.
- FURNISH AND INSTALL WIRING 115/208-230-1-60 60 AMP 10 GAUGE DEDICATED CIRCUIT (6) FOR 4 DOOR FREEZER CASES. PROVIDE CIRCUITS TO JUNCTION BOX MOUNTED AT 8'-4" AFF. WITH TERMINATION AND LENGTH TO DISCONNECT MADE BY EQUIPMENT INSTALLER. FINAL LOCATION OF THE EQUIPMENT TO BE COORDINATED BY FDS PROJECT MANAGER.
- FURNISH AND INSTALL WIRING 115/208-230-1-60 60 AMP 8 GAUGE DEDICATED CIRCUIT (5) FOR 5 DOOR FREEZER CASES. PROVIDE CIRCUITS TO JUNCTION BOX MOUNTED AT 8'-4" AFF. WITH TERMINATION AND LENGTH TO DISCONNECT MADE BY EQUIPMENT INSTALLER. FINAL LOCATION OF THE EQUIPMENT TO BE COORDINATED BY FDS PROJECT MANAGER.
- FURNISH WIRING AND MAKE FINAL HOOKUP FOR BUILDING SIGN (6) COMPLETE WITH PHOTOCELL. VERIFY SIGN(S) ARE WORKING PRIOR TO FDS'S POSSESSION.
- FURNISH AND INSTALL WIRING 4 HOOKUP FOR HAND DRYER. (1 #2 HOT, 1 #2 NEUTRAL, 1 #2 GRND.) TO A 20A-2P BREAKER. MAKE ALL FINAL CONNECTIONS. (TYP FOR 2)
- PROVIDE AND INSTALL VENSTAR SYSTEM. SYSTEM TO CONTROL ALL LIGHTING AND HVAC UNITS AND TO BE LOCATED ADJACENT TO ELECTRICAL PANELS. ALL EXTERIOR LIGHTING AND SIGN CIRCUITS SHALL BE CONTROLLED BY PHOTOCELL. REFER TO SHEET E3 FOR SPECIFICATIONS.
- NOT USED
- NOT USED
- WINDOW RECEPTACLE MOUNTED MAX 18" ABOVE WINDOW IN WALL OR IN CEILING AT WINDOW.
- PROVIDE AND INSTALL WIRING AND HOOKUP FOR MANAGER'S WORK STATION AT STOREFRONT. CIRCUIT MUST BE TERMINATED AT A JUNCTION BOX ABOVE SALES AREA CEILING WITH FINAL CONNECTION MADE TO SPECIAL PLUG-IN 'BROWN PIGTAIL' CONNECTOR. PROVIDE AND INSTALL A 10' WHIP TO PLUG. FDS'S OUTSIDE VENDOR WILL INSTALL POWER POLE TO FINAL LOCATION BY ATTACHING TO THIS CONNECTOR. VERIFY EXACT LOCATION WITH FDS'S CONSTRUCTION PROJECT MANAGER.
- PROVIDE WIRING AND MAKE FINAL HOOKUP FOR PYLON SIGN COMPLETE WITH PHOTOCELL. VERIFY SIGN IS WORKING PRIOR TO FDS'S POSSESSION.



1 ELECTRICAL POWER PLAN
 E-1 SCALE: 1/8" = 1'-0"

LOCATION OF COOLER / FREEZER COMPRESSOR/CONDENSERS TO BE DETERMINED BY COOLER/FREEZER INSTALLER.

NOTE:
 CONTRACTOR SHALL VERIFY AND COORDINATE ALL POWER DROP INSTALLATION LOCATIONS W/ FDS FIXTURE REPRESENTATIVE.



Architecture Interior Design Planning
Fabo Enterprises, Inc.
 Production Office
 The Ferrum 77 Office Building
 3100 E. 45th St., Suite 506
 Cleveland, OH 44132
 (714) 216-5950-0553
 Corporate Office
 419 University Road
 Cleveland, OH 44113
 (714) 216-2416-6190
 (714) 216-5950-0053

FAMILY DOLLAR 709553
 HWY 10 COMMERCE PARK CHAPMANVILLE, WV
 www.fabenterprises.com

REVISIONS	1	2	3	4	5	6
ISSUE DATE	10-18-13					
JOB NO.	FE13160					
E-1						
SHEET NO.						