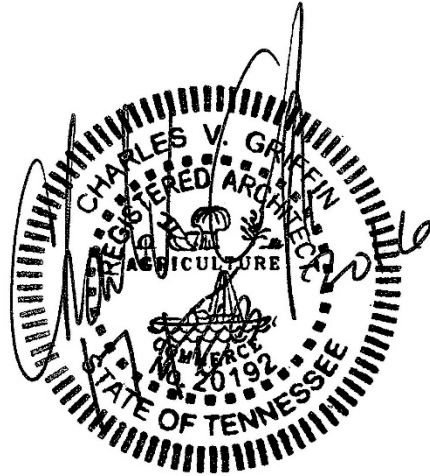


DOCUMENT 00 91 13.01 – ADDENDUM 1

1.01 PROJECT INFORMATION

- A. Project Name: Third Floor Renovations, Radio Systems Corporation.
- B. Owner: Radio Systems Corporation, 10427 Petsafe Way, Knoxville, Tennessee 37932..
- C. Architect: BarberMcMurry architects, 505 Market Street, Suite 300, Knoxville, TN 37902-2175.
- D. Architect Project Number: 154000.
- E. Date of Addendum: 17 February 2016.



1.02 NOTICE TO BIDDERS

- A. This Addendum is issued to all registered plan holders pursuant to the Instructions to Bidders. This Addendum serves to clarify, revise, and supersede information in the Project Manual, Drawings, and previously issued Addenda. Portions of the Addendum affecting the Contract Documents will be incorporated into the Contract by enumeration of the Addendum in the Owner/Contractor Agreement.
- B. The Bidder shall acknowledge receipt of this Addendum in the appropriate space on the Bid Form.
- C. The date for receipt of bids is unchanged by this Addendum, at same time and location.
  - 1. Bid Date: 26 February 2016, at 10:00 a.m., local time.

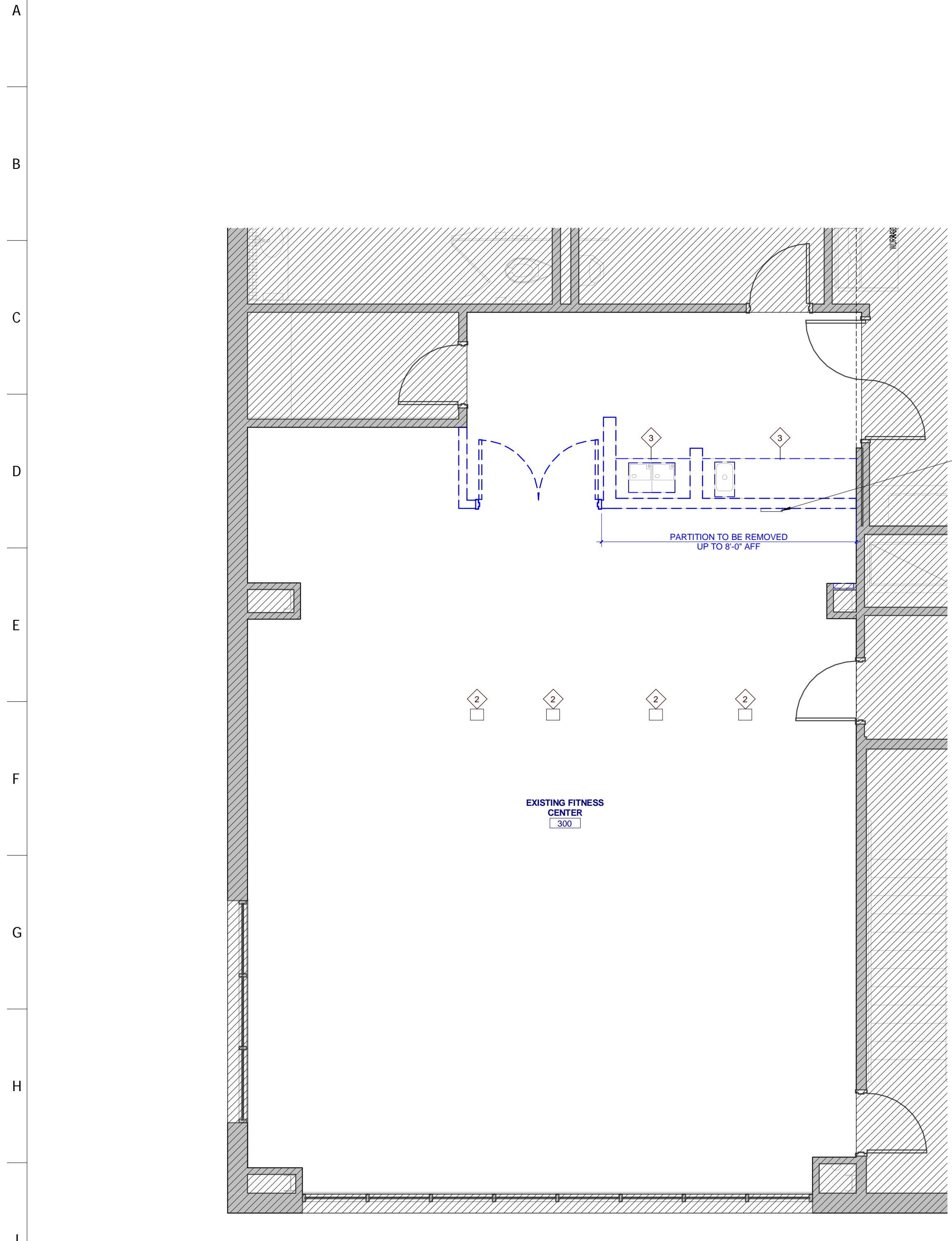
1.03 ATTACHMENTS

- A. This Addendum includes the following attached Sheets:
  - 1. Architectural Sheet A101, revised 16 February 2016, reissued.
    - a. Speakers (not in construction) as well as white noise speakers (not in construction) have been added to the ceiling plan for coordination purposes.
  - 2. Architectural Sheet A301, revised 16 February 2016, reissued.
    - a. The "FLOOR FINISH KEY" LVT 2 and LVT 3 have been revised (also noted on I101).
    - b. Switch plate and fire protection devices have been relocated.
    - c. Switch plate and room schedulers have been modified (noted on floor plan on A101 as well).
  - 3. Interiors Sheet I101, revised 16 February 2016, reissued.
  - 4. Electrical Sheet E101, revised 16 February 2016, reissued.
  - 5. Electrical Sheet E102, revised 16 February 2016, reissued.

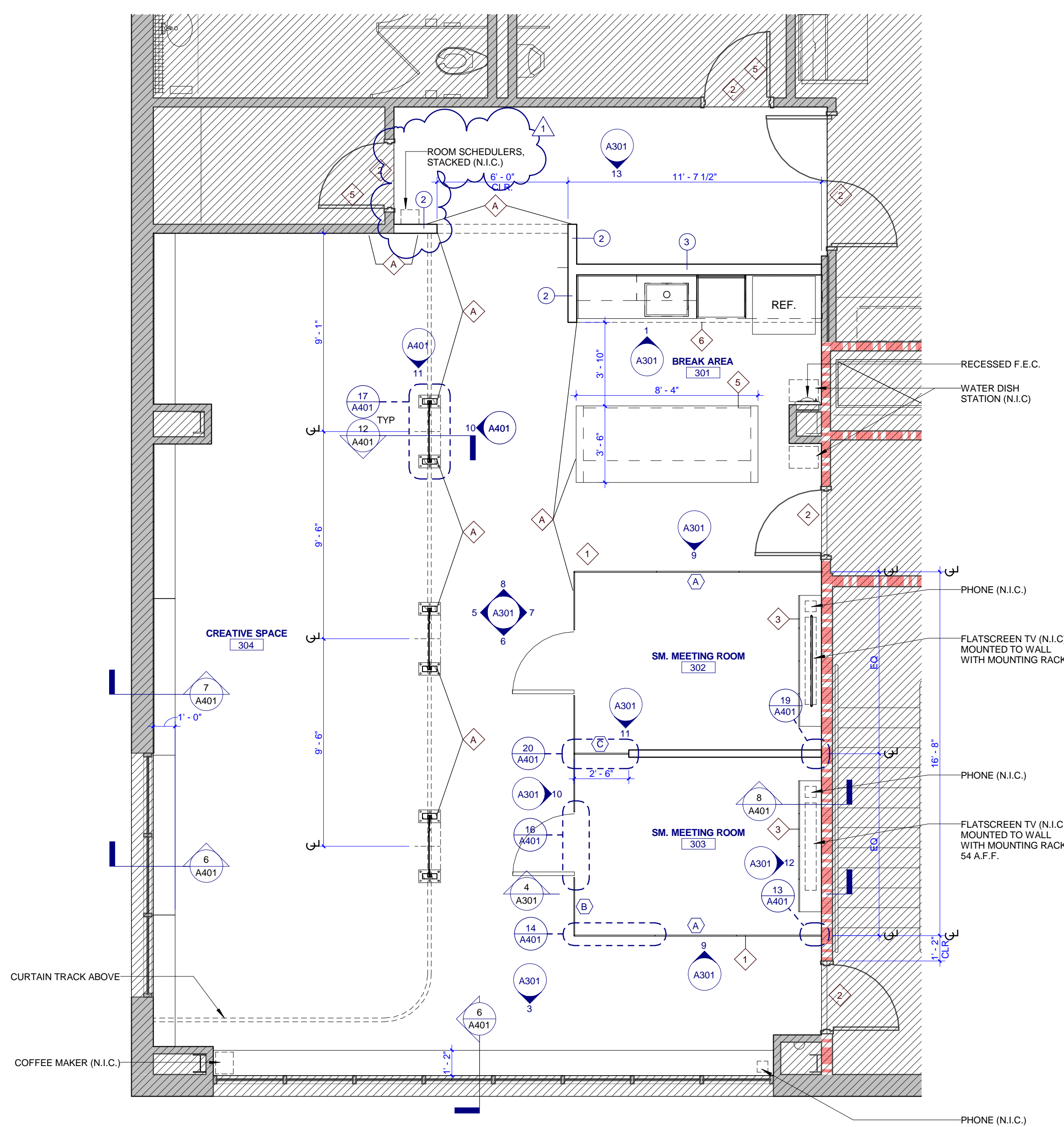
#### 1.04 GENERAL CLARIFICATIONS

- A. Radio Systems Corporation would like to begin construction on 28 March 2016.
- B. Existing mirrors, hanging televisions, and gym equipment will be removed by Radio Systems Corporation prior to construction.
- C. Architectural Sheet A401, not reissued.
  - 1. The steel sleeves and the steel tube at the wood dividers should not be rounded off but have crisp corners as shown in the Drawings.
- D. Specification Section 10 21 23 – Cubicle Tracks and Curtains, not reissued.
  - 1. The Cubicle Curtain Track is to be powder coated (PNT 4) heavy extruded aluminum.

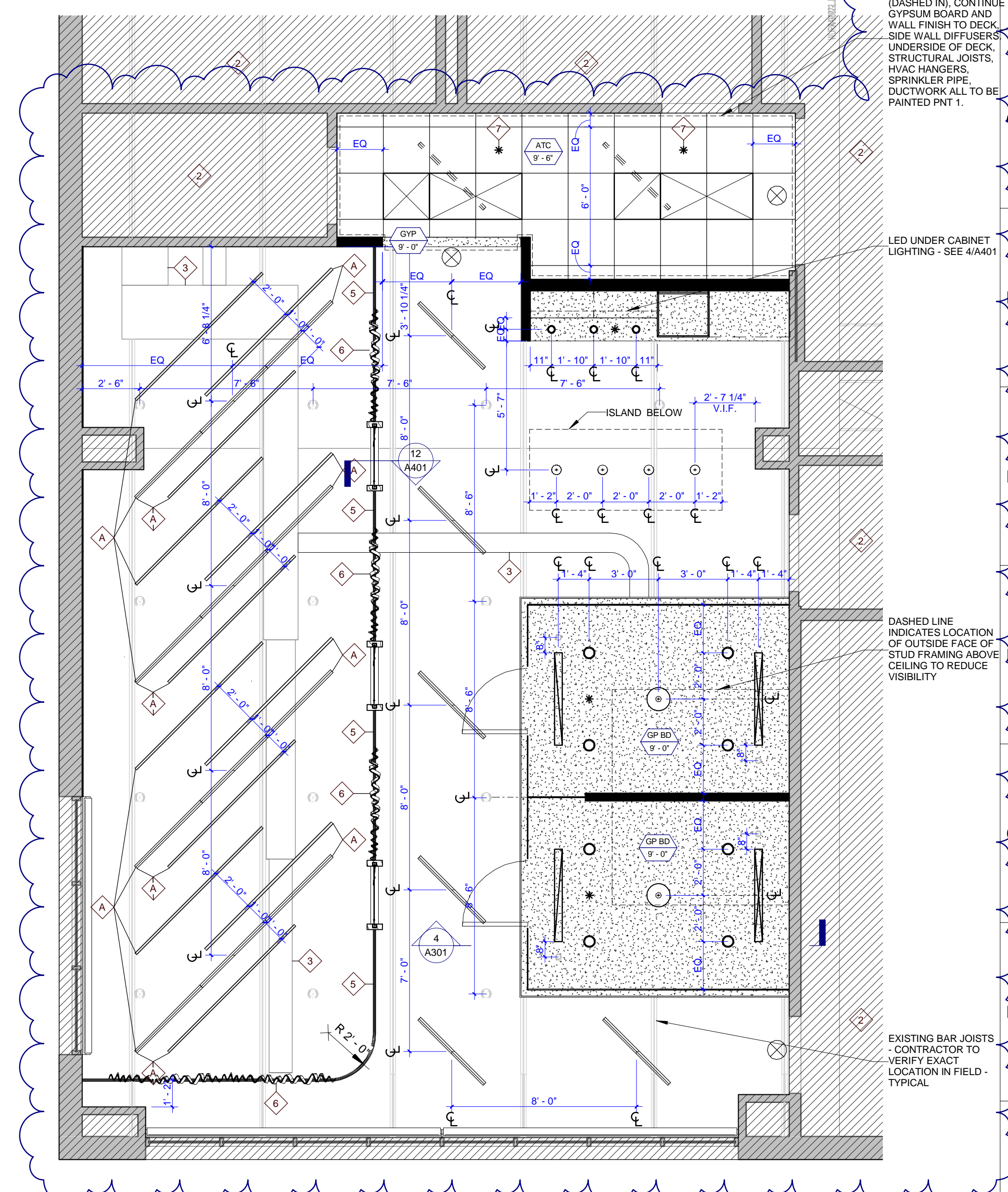
END OF ADDENDUM



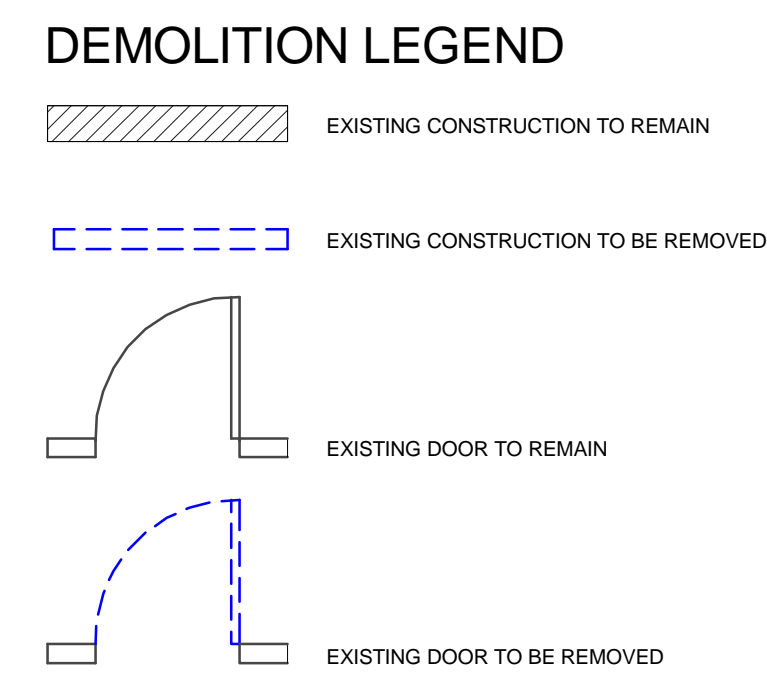
**THIRD FLOOR DEMOLITION PLAN**  
 A101 0 1 2 4 8



**THIRD FLOOR ENLARGED PLAN**  
 A101 0 1 2 4 8



**THIRD FLOOR REFLECTED CEILING PLAN**  
 A101 0 1 2 4 8

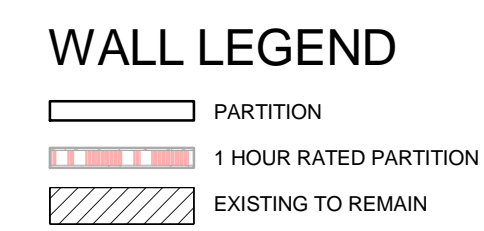


**DEMOLITION NOTES**

- COORDINATE EXTENT OF DEMOLITION WITH APPLICABLE DIMENSIONS AND DETAILS ON OTHER SHEETS.
- REMOVE ALL EXISTING FINISHES AT DEMOLISHED AREAS UNLESS NOTED OTHERWISE. REMOVE EXISTING FINISHES AS REQUIRED AT OTHER AREAS SCHEDULED TO RECEIVE NEW FINISHES.
- CAP UTILITIES AND PATCH WALLS AND FLOORS WHERE DEMOLITION OR FIXTURES ARE REMOVED. PROVIDE RATED CONSTRUCTION OR OPENING PROTECTIVES MATCHING WALL OR FLOOR WHERE REQUIRED.
- PROTECT ALL FINISHES OR FIXTURES WHICH ARE EXISTING TO REMAIN. REPAIR OR REPLACE AS REQUIRED IF DAMAGED.
- SALVAGEABLE ITEMS SHALL BE STORED, RE-USED, OR DISPOSED OF AT THE OWNER'S DIRECTION.

**DEMOLITION PLAN KEYNOTES**

- NOT USED
- FLOOR OUTLETS TO CAP, FLOOR OPENINGS TO BE COVERED TO RECEIVE NEW FLOOR FINISH
- REMOVE EXISTING COUNTERTOP/CABINETS AND PLUMBING FIXTURES

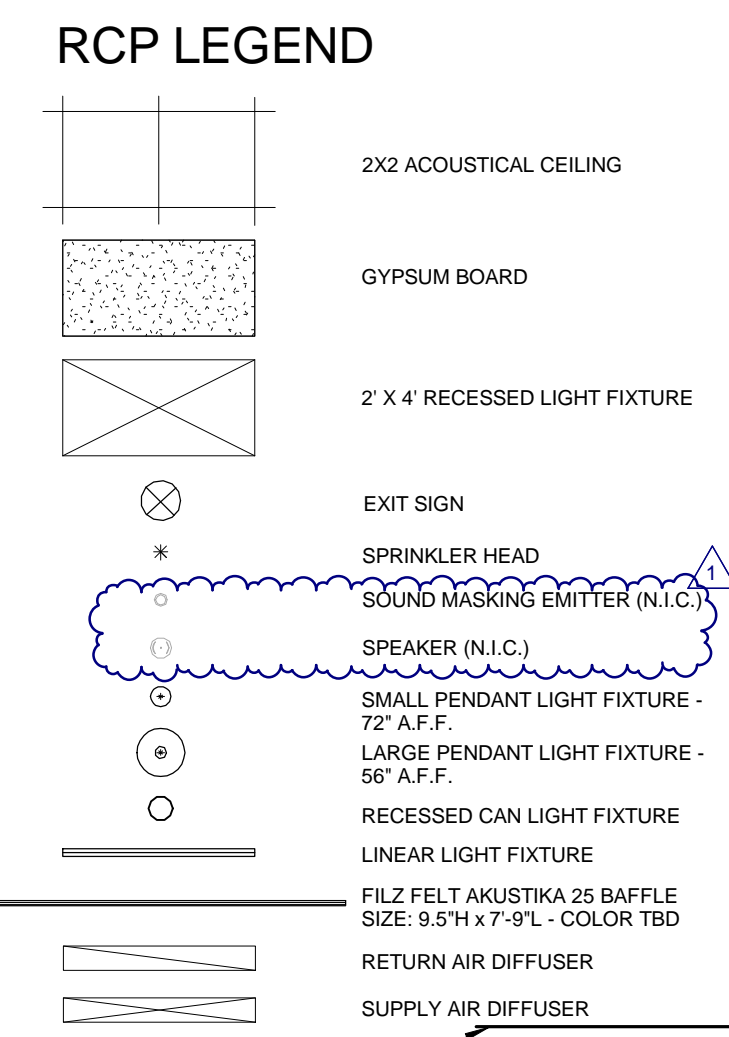


**GENERAL NOTES**

- COORDINATE WITH APPLICABLE DIMENSIONS AND DETAILS ON OTHER SHEETS.
- NOTES AND DETAILS ARE TYPICALLY APPLICABLE TO SIMILAR ITEMS ELSEWHERE ON THE SHEET.
- PROVIDE BLOCKING, ROUGH HARDWARE, ETC. AS REQUIRED TO MOUNT EQUIPMENT.
- SYMBOL (A) INDICATES PARTITION TYPE. SEE SHEET A101 FOR PARTITION TYPES.
- SYMBOL (B) INDICATES GLAZING TYPE. SEE SHEET A301 FOR GLAZING ELEVATIONS.

**ENLARGED FLOOR PLAN KEYNOTES**

- ALIGN
- DEMOUNTABLE GLASS PARTITIONS TO BE PROVIDED PER SEPARATE CONTRACT
- EXISTING DOOR TO REMAIN
- CREDENSA
- NOT USED
- VINYL APPLIQUE SIGNAGE (N.I.C.)
- DASHED LINE INDICATES EXISTING PARTITION ABOVE

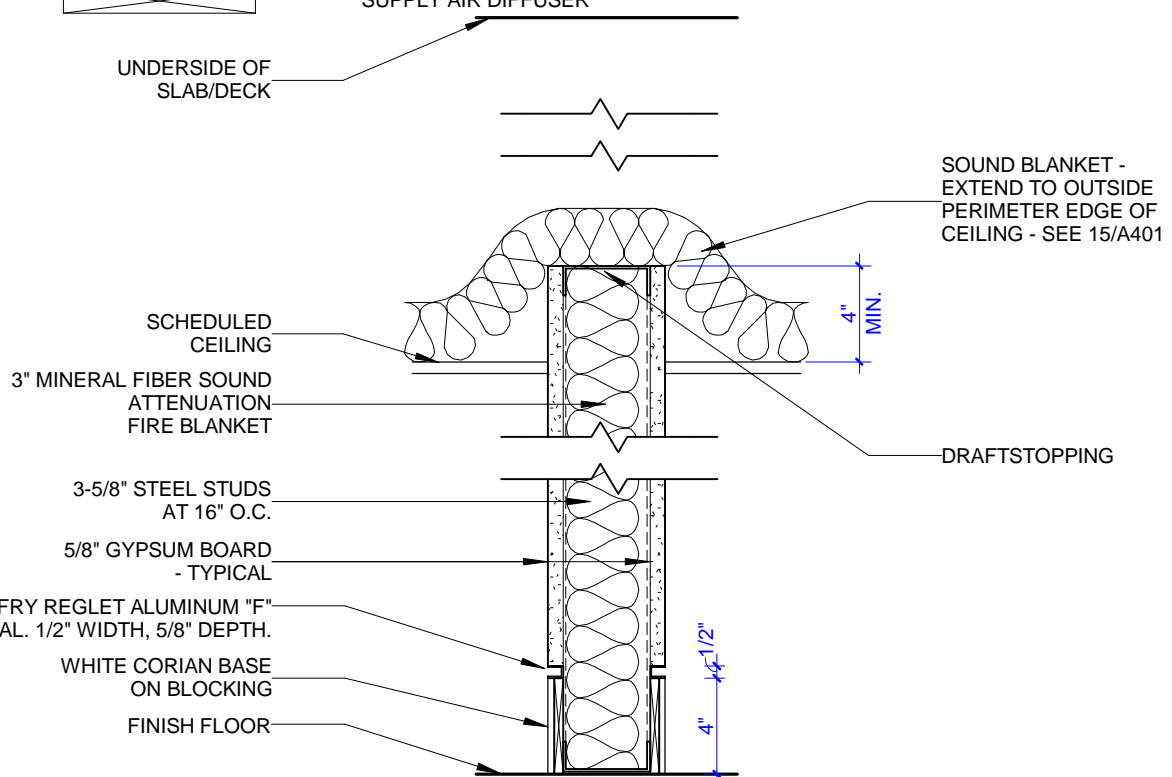
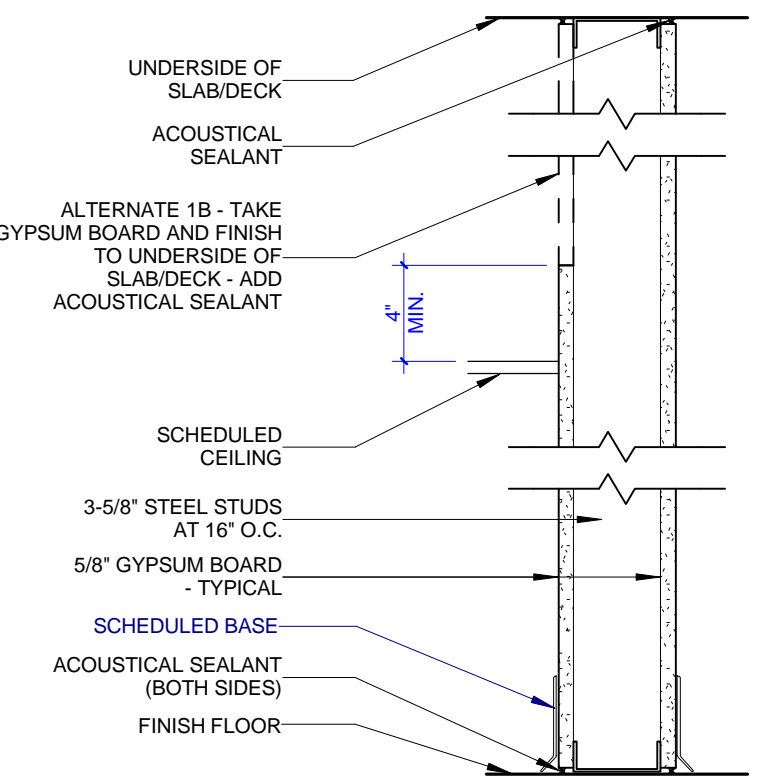
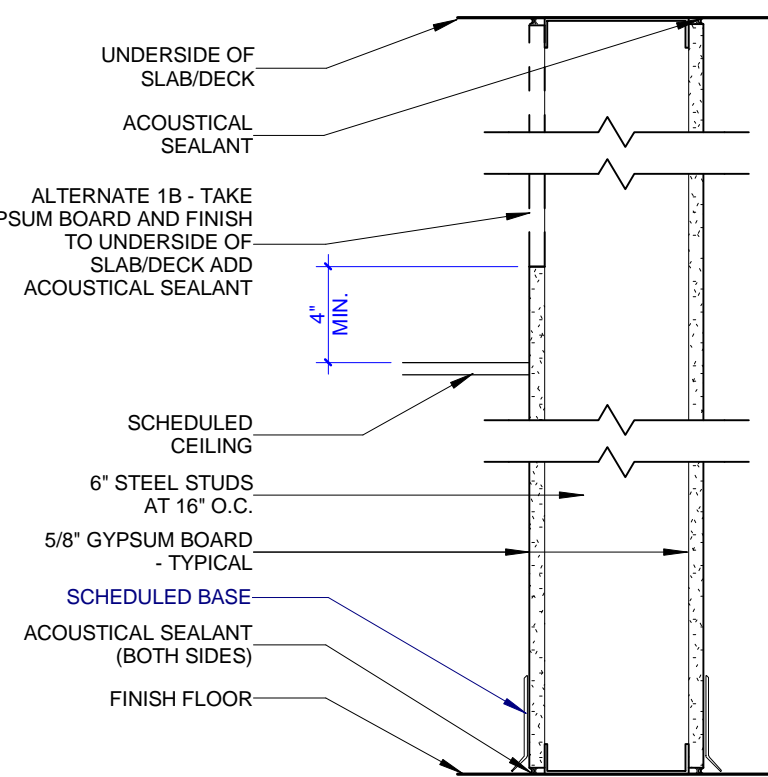


**GENERAL NOTES**

- COORDINATE WITH APPLICABLE NOTES AND DIMENSIONS ON OTHER SHEETS.
- NOTES AND DETAILS ARE TYPICALLY APPLICABLE TO SIMILAR ITEMS ELSEWHERE ON THE SHEET.
- SEE FIRE PROTECTION SHEETS FOR SPRINKLER HEAD LOCATIONS AND ELECTRICAL SHEETS FOR SMOKE DETECTOR LOCATIONS.
- PROVIDE STRUCTURAL SUPPORT FOR CEILING-MOUNTED EQUIPMENT AS REQUIRED.
- PROVIDE BULKHEAD ABOVE WALL CABINETS TO CEILING. TYPICAL SEE A401 FOR DETAILS.
- UNDERSIDE OF DECK, STRUCTURAL JOISTS, HVAC HANGERS, SPRINKLER PIPE, DUCTWORK TO BE PAINTED PNT 1.

**RCP KEYNOTES**

- NOT USED
- EXISTING CEILING TO REMAIN
- EXISTING AND NEW DUCT TO BE PAINTED PNT 1
- NOT USED
- CURTAIN TRACK SUSPENDED FROM BAR JOISTS ABOVE. POWDER COAT PAINT TRACK PNT 4. POWDER COAT PAINT VERTICAL SUPPORT KIDS PNT 1.
- CONTRACTOR ALLOWANCE FOR BRACKET - 340V/35MM (15.5" W), FLOOR LENGTH, 100% FULLNESS. BATON DRAW KIDS, CORNER AND STRING WEIGHTS, NO LINING.
- RELOCATE SPRINKLER HEADS TO SHOWN LOCATIONS



**PARTITION TYPES GENERAL NOTES**

- COORDINATE WITH APPLICABLE DIMENSIONS AND DETAILS ON OTHER SHEETS.
- NOTES AND DETAILS ARE TYPICALLY APPLICABLE TO SIMILAR ITEMS DRAWN ELSEWHERE ON THE SHEET.
- PROVIDE APPROPRIATE STENCILED NOTATIONS AT 15 FEET O.C. MAX. ABOVE THE CEILING AT ALL SMOKE-TIGHT AND FIRE-RATED PARTITIONS.
- PROVIDE ACOUSTICAL SEALANT AT TOP AND BOTTOM OF ALL PARTITIONS U.O.N.
- PROVIDE LISTED THROUGH-PENETRATION FIRESTOP SYSTEM AT TOP OF ALL FIRE-RATED PARTITIONS.
- WHERE RATED WALL TYPES ARE INDICATED ON THE PLANS AS SMOKE-TIGHT OR NON-RATED, ACOUSTICAL SEALANT MAY BE USED AT TOP IN LIEU OF THROUGH-WALL SYSTEM.



505 Market St Suite 300 Knoxville, TN 37902  
 1 865 934 1915  
 bma1915.com



**PROJECT NUMBER**  
 154000

**PROJECT NAME**  
 THIRD FLOOR RENOVATION

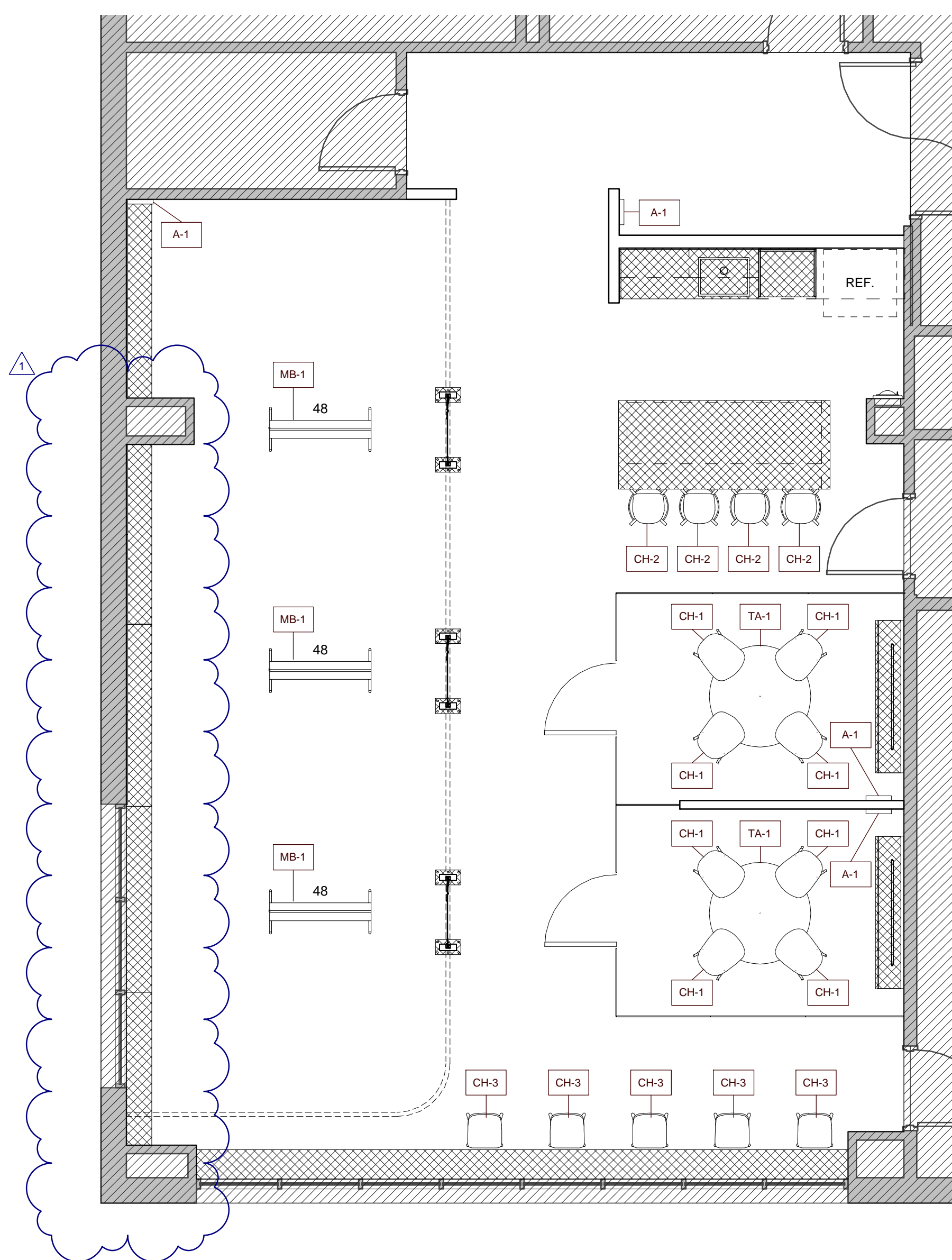
**OWNER**  
 RADIO SYSTEMS CORPORATION

**PROJECT ADDRESS**  
 10427 PETAFAE WAY  
 KNOXVILLE, TN 37932

|                   |            |
|-------------------|------------|
| PARTNER-IN-CHARGE | CVG        |
| PROJECT MANAGER   | KDP/KMM    |
| DRAWN BY          | TOS/KAL    |
| REVIEWED BY       | TWM        |
| ISSUE DATE        | 02.05.2016 |
| REVISIONS         |            |
| 1                 | 02.16.2016 |

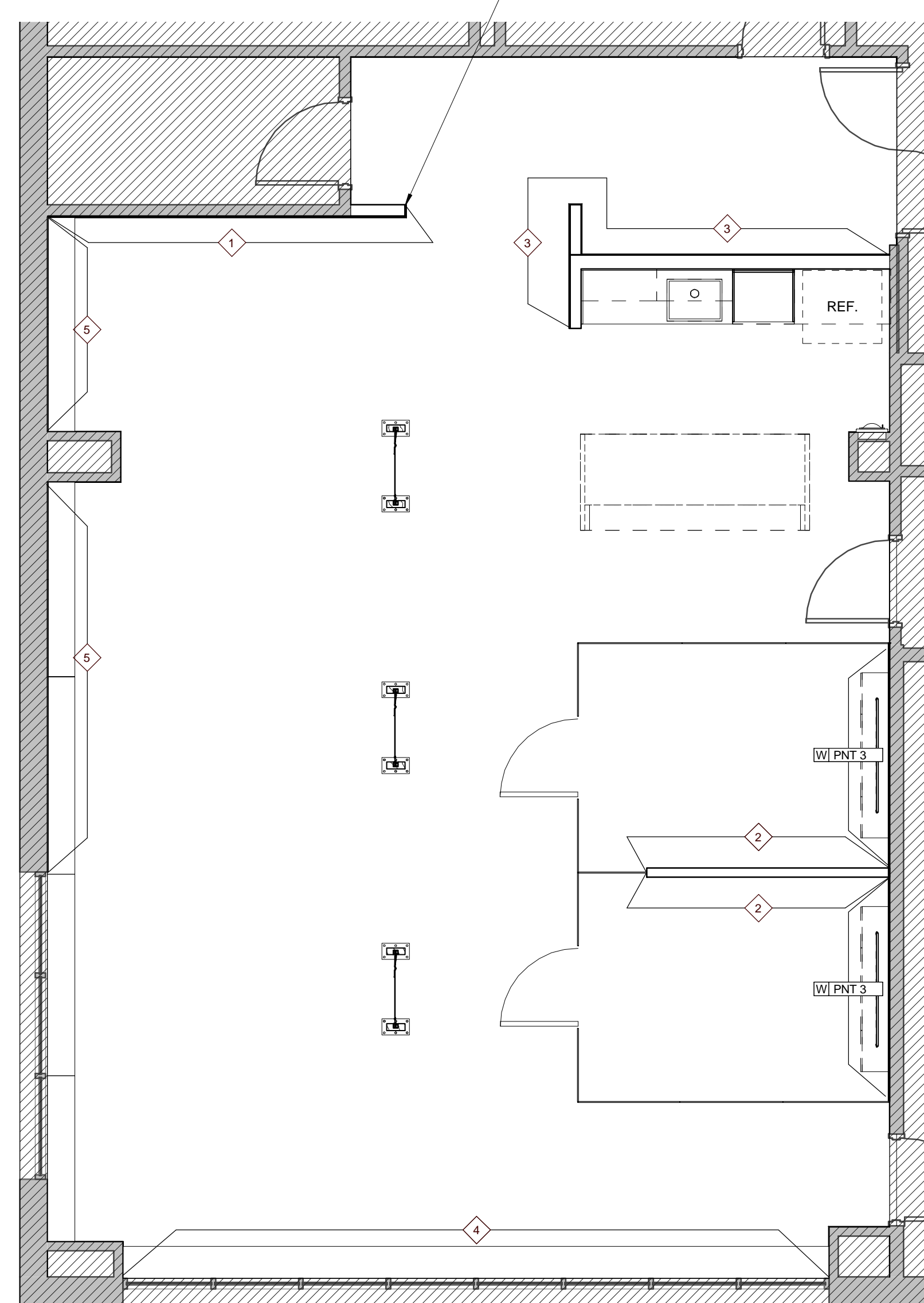
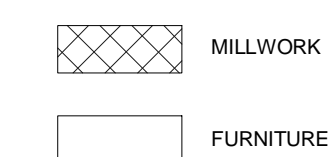
**A101**  
 DEMO, FLOOR, & REFLECTED CEILING PLANS AND PARTITION TYPES





2 THIRD FLOOR FURNITURE PLAN  
1101 0 1 2 4 8

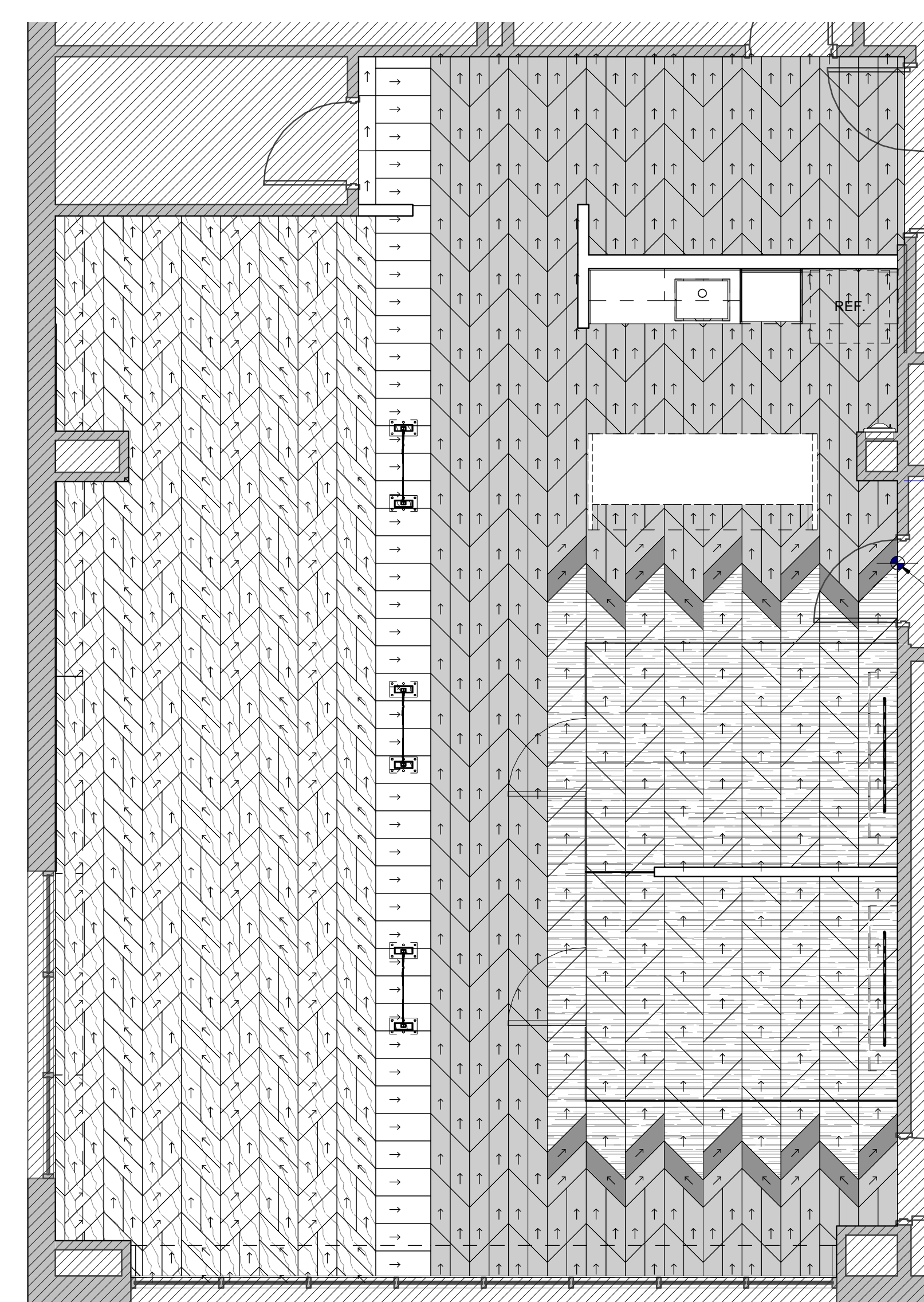
FURNITURE LEGEND



3 THIRD FLOOR WALL FINISH PLAN  
1101 0 1 2 4 8

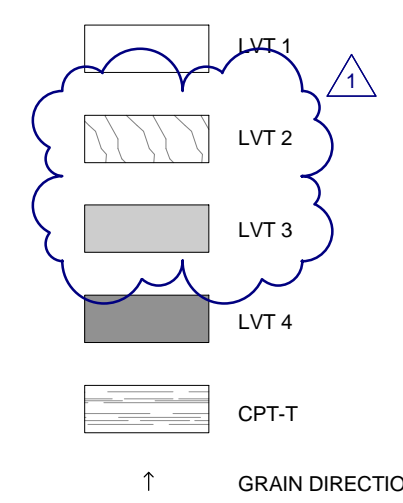
WALL FINISH PLAN KEYNOTES

- 1 WC 1, PNT 6, AND S PNT 1 TO BE APPLIED IN THIS ORDER. PAINT TO 9'-0" A.F.F.
- 2 WC 1 AND S PNT 2 TO BE APPLIED IN THIS ORDER. PAINT TO SCHED CEILING
- 3 WC 1 AND S PNT 3 TO BE APPLIED IN THIS ORDER. TERMINATE WC 1 AT 9'-0" A.F.F. CONTINUE S PNT 3 TO SCHED CEILING OR TO DECK IF NO CEILING IS PRESENT.
- 4 WD 1, REF. ELEVATION FOR HEIGHT
- 5 AWP 1 TO BE APPLIED ABOVE COUNTER. REF. #401 FOR PANEL SIZES AND LOCATIONS



1 THIRD FLOOR FINISH PLAN  
1101 0 1 2 4 8

FLOOR FINISH KEY



FINISH LEGEND

| KEY                       | MATERIAL                | SPECIFICATION   |
|---------------------------|-------------------------|---|
| <b>FLOOR FINISHES</b>     |                         |   |
| CPT-T                     | CARPET TILE             | PATCRAFT MIXED MATERIALS COLLECTION 03373 GEOMETRIX 0090 PINSTRIPES, VERTICAL GRABAR INSTALLATION |
| LVT 1                     | LUXURY VINYL TILE       | PATCRAFT MIXED MATERIALS METALLIX (RECTANGLE) 1314V ALUMINUM 00100                                |
| LVT 2                     | LUXURY VINYL TILE       | PATCRAFT MIXED MATERIALS WOOD PLANK 1316V HAZEL OAK 00160   |
| LVT 3                     | LUXURY VINYL TILE       | PATCRAFT MIXED MATERIALS METALLIX (FACE IT) 1310V PEWTER 00570                                    |
| LVT 4                     | LUXURY VINYL TILE       | PATCRAFT MIXED MATERIALS WOOD PLANK 1316V CHARRED OAK 00680                                       |
| <b>WALL FINISHES</b>      |                         |   |
| AWP 1                     | ACOUSTICAL WALL PANEL   | FILZ FELT AUSTRIKA 10 WALL, WRAPPED EDGES, COLOR: 170 ASISCHE, Z-CLIPS                            |
| PNT 1                     | GENERAL PAINT           | PPS1025-1 COMMERCIAL WHITE (GENERAL PAINT)  |
| PNT 2                     | ACCENT PAINT            | PPG1010-7 ZOMBIE (ACCENT WALL AND DOORS/FRAMES U.O.N.)  |
| PNT 3                     | ACCENT PAINT            | PPG1150-5 ACAPULCO CLIFFS (ACCENT WALLS)  |
| PNT 4                     | ACCENT PAINT            | PPG1153-7 CINNAMON STONE (CURTAIN RAIL AND METAL ACCENTS)   |
| PNT 5                     | ACCENT PAINT            | NOT USED  |
| PNT 6                     | ACCENT PAINT            | PPG1213-7 CRUSHED PINEAPPLE FINISH, SEMI-GLOSS (ACCENT WALL)                                      |
| S PNT 1                   | SPECIAL PAINT           | IDEAPANT CREATE CLEAR DRY ERASE COATING   |
| S PNT 2                   | SPECIAL PAINT           | IDEAPANT CREATE WHITE DRY ERASE COATING   |
| S PNT 3                   | SPECIAL PAINT           | BENJAMIN MOORE CHALKBOARD PAINT, MATCH COLOR TO PNT 2   |
| WC 1                      | WALL COVERING           | IDEAPANT PULL MAGNETIC WALLCOVERING   |
| <b>WALL BASE FINISHES</b> |                         |   |
| RB 1                      | RESILIENT BASE          | JOHNSONITE 4" COVE BASE 63 BURNT UMBER B  |
| SB 1                      | SOLID SURFACE BASE      | DUPONT CORIAN GLACIER WHITE, 4W   |
| <b>CASEWORK FINISHES</b>  |                         |   |
| PL 1                      | PLASTIC LAMINATE        | WILSONART D90-60 SLATE GREY MATTE FINISH  |
| PL 2                      | PLASTIC LAMINATE        | WILSONART 1573-60 FROSTY WHITE  |
| PL 3                      | PLASTIC LAMINATE        | NOT USED  |
| SSM 1                     | SOLID SURFACE MATERIAL  | DUPONT CORIAN GLACIER WHITE   |
| WD 1                      | WOOD                    | 3/4" STAIN GRADE PLYWOOD, SPECIES: WHITE OAK  |
| WDF 1                     | WOOD FINISH             | BONA NATURALE (COMMERCIAL MATTE) WOOD FLOOR PROTECTION  |
| <b>CEILING FINISHES</b>   |                         |   |
| ATC                       | ACOUSTICAL TILE CEILING |   |
| PNT 7                     | CEILING PAINT           | REFER TO PNT 1  |

GENERAL FINISH NOTES

1. PAINT TO BE PNT 1 U.O.N.
2. WALL BASE TO BE RB 1 U.O.N.
3. DOORS AND FRAMES TO BE PNT 2 ON RENOVATED SIDE U.O.N. EXISTING FINISH TO REMAIN ON OTHER SIDE.
4. LEVEL 5 FINISH ON GYPSUM BOARD ALL WALLS WITH S PNT OR WC.
5. WD 1 TO RECEIVE WDF 1 FINISH IN ALL INSTANCES

505 Market St Suite 300 Knoxville, TN 37902  
1 865.934.1915  
bma1915.com

PROJECT NUMBER  
**154000**

PROJECT NAME  
**THIRD FLOOR RENOVATION**

OWNER  
**RADIO SYSTEMS CORPORATION**

PROJECT ADDRESS  
**10427 PETS SAFE WAY  
KNOXVILLE, TN 37932**

PARTNER-IN-CHARGE **CVG**

PROJECT MANAGER **KDP/KMM**

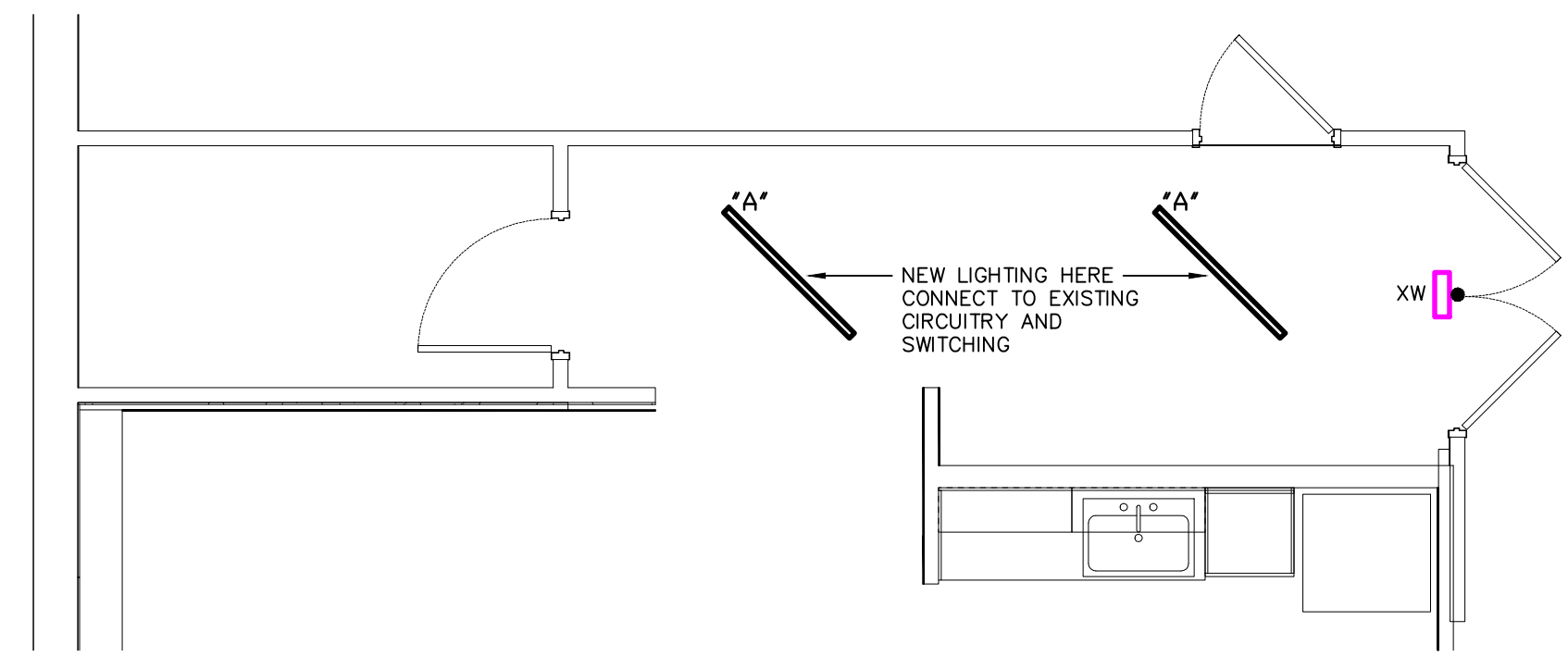
DRAWN BY **KAL**

REVIEWED BY **TWM**

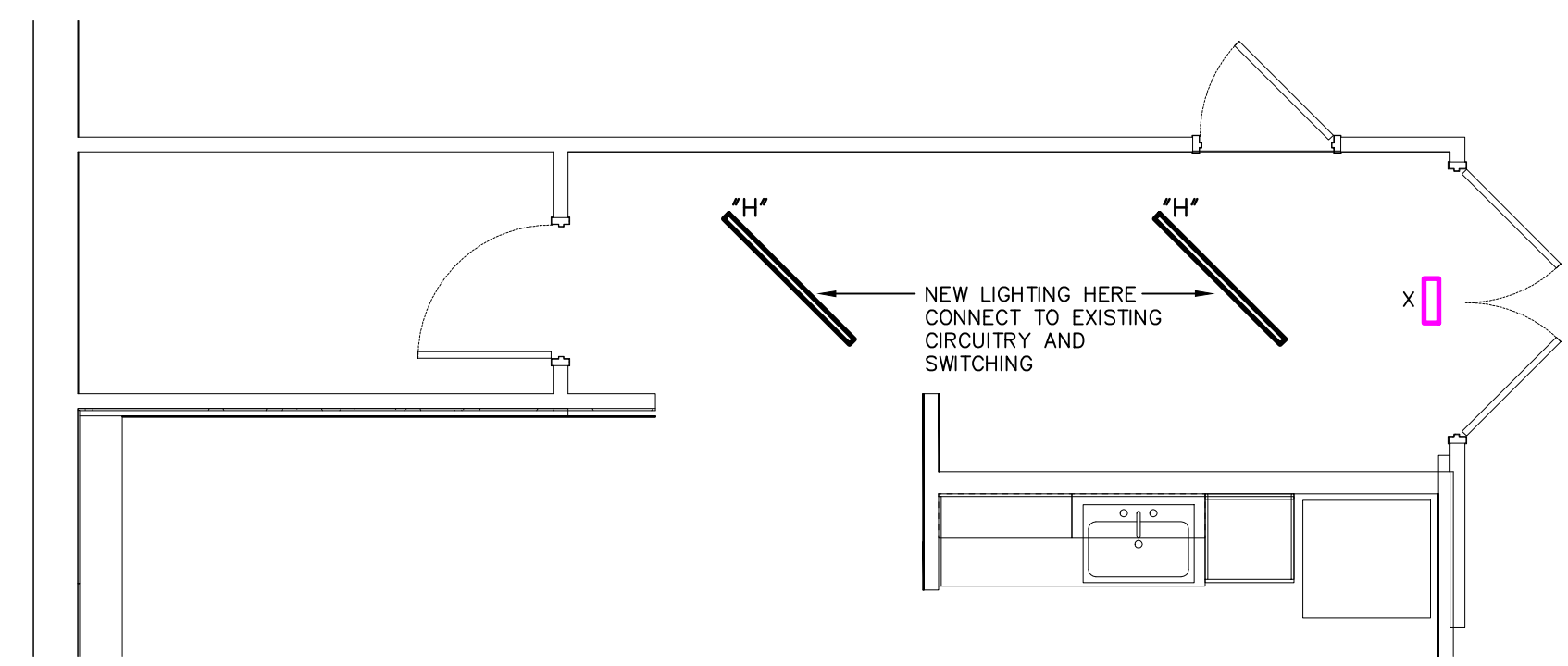
ISSUE DATE **02.05.2016**

REVISIONS

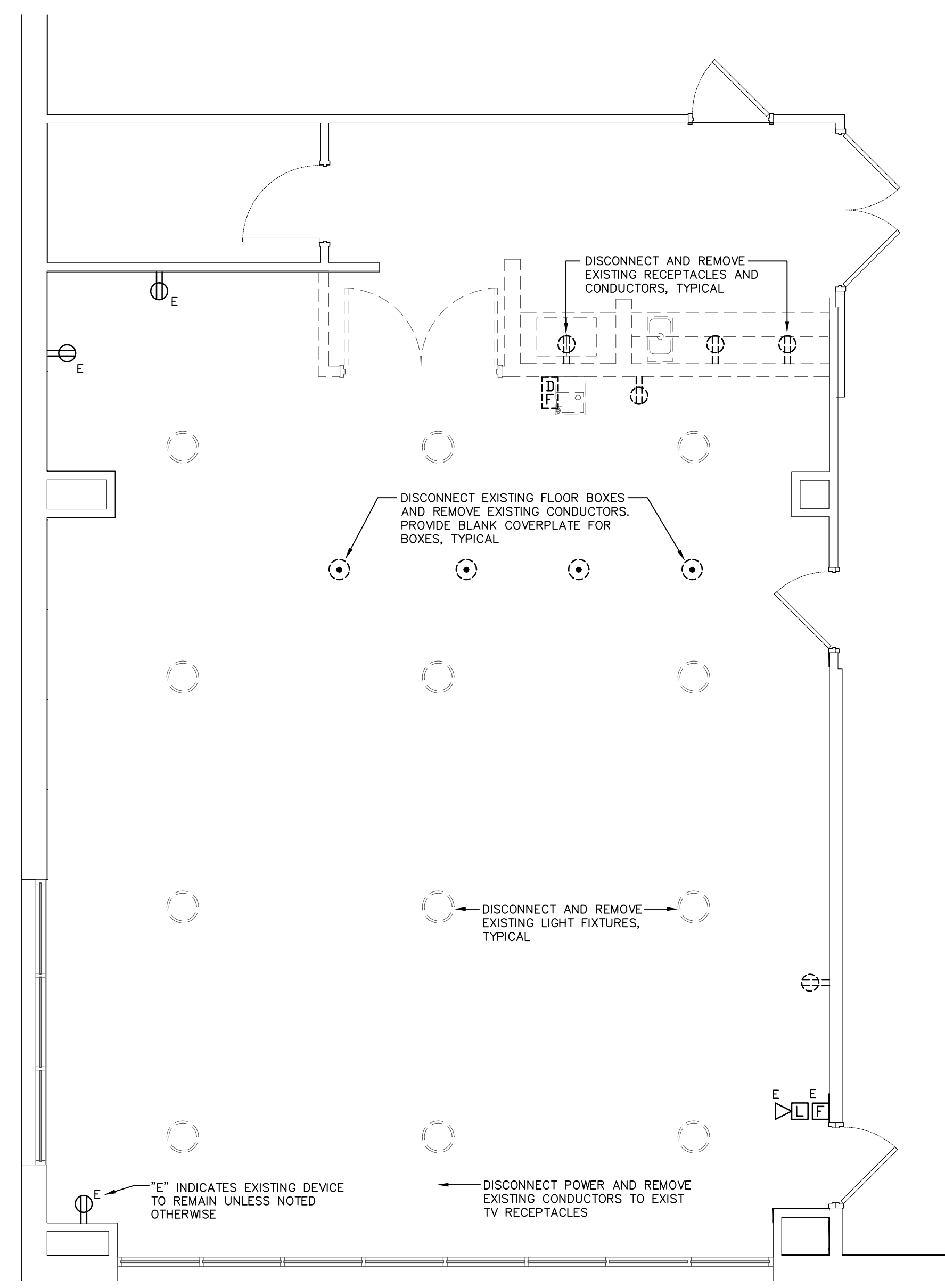
1 02.16.2016



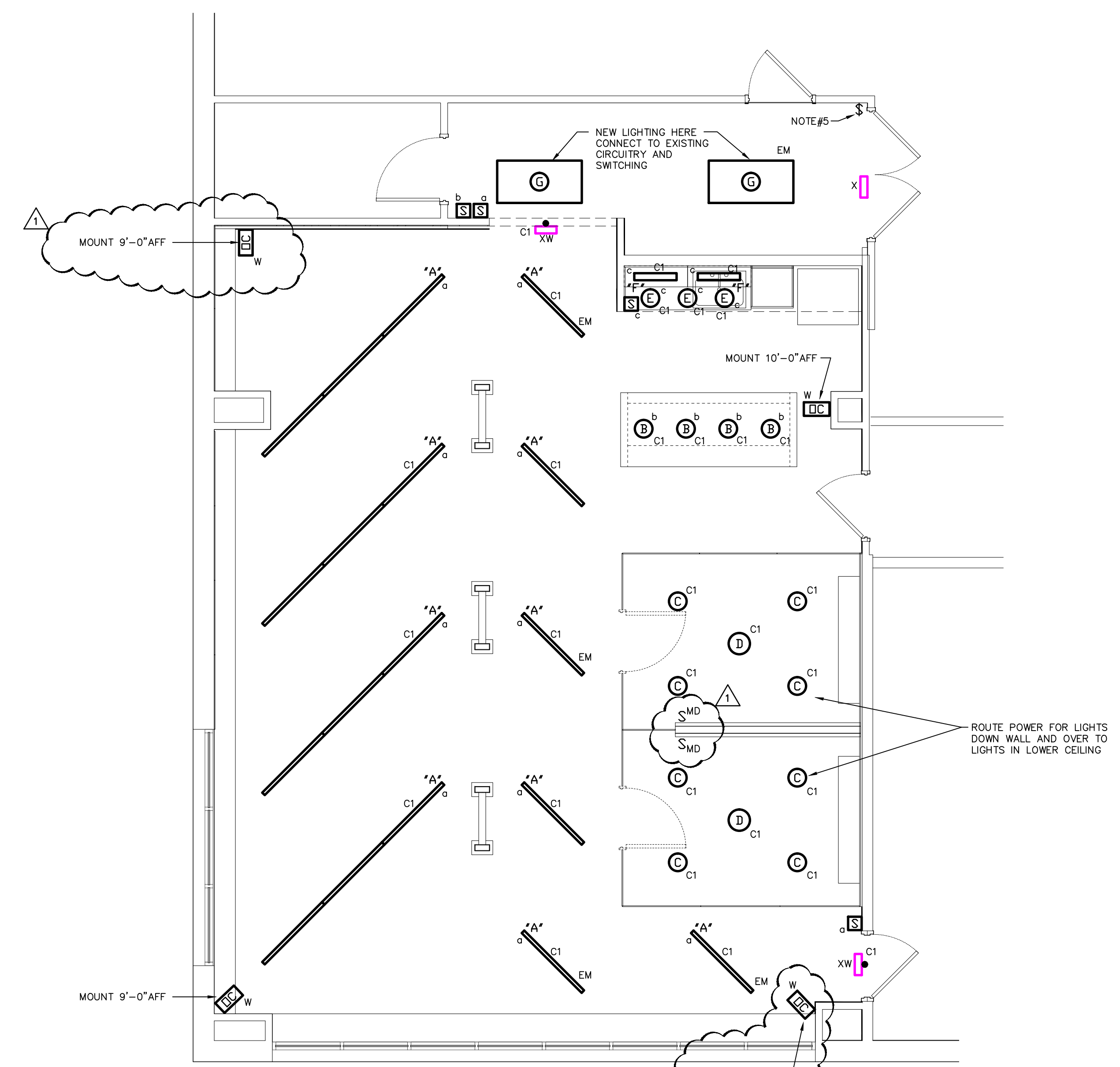
**PARTIAL PLAN - ALTERNATE#1B - LIGHTING**  
1/4"=1'-0"



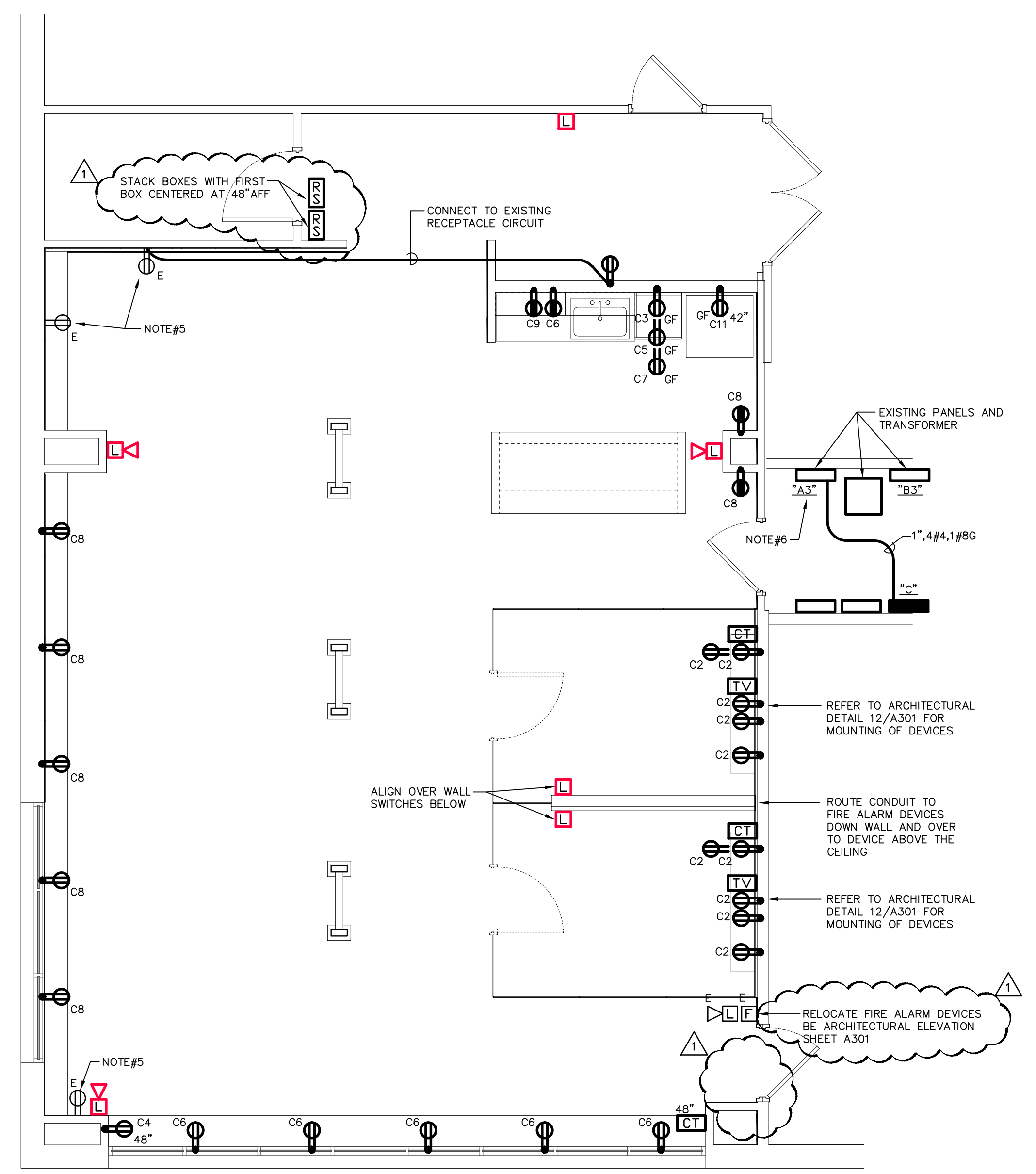
**PARTIAL PLAN - ALTERNATE#1A - LIGHTING**  
1/4"=1'-0"



**FLOOR PLAN - DEMOLITION**  
1/4"=1'-0"



**FLOOR PLAN - LIGHTING**  
1/4"=1'-0"



**FLOOR PLAN - POWER & COMMUNICATIONS**  
1/4"=1'-0"

- NOTES:**
- REFER TO ARCHITECTURAL REFLECTED CEILING PLAN FOR EXACT LOCATION OF LIGHTING FIXTURES. COORDINATE INSTALLATION WITH CEILING RATING. PROVIDE FIRE RATED COVER FOR NON-RATED LIGHT FIXTURES WHERE REQUIRED. COVER MAY BE A MANUFACTURED, UL LISTED PRODUCT OR BE SITE FABRICATED AND SHALL BE COMPATIBLE WITH THE ASSOCIATED FIXTURE, INCLUDING "IC" RATING. COVERS SHALL MEET OR EXCEED THE FIRE RATING OF THE CEILING AND AHU REQUIREMENTS.
  - BRANCH CIRCUIT WIRING: 120V, 20AMP CIRCUITS WITH HOMERUNS GREATER THAN 70 FEET SHALL HAVE CIRCUIT CONDUCTORS OF #10AWG AS MINIMUM. ANY 120V, 20AMP CIRCUIT WITH OUTLETS GREATER THAN 100 FEET OF BRANCH CIRCUIT LENGTH SHALL HAVE MINIMUM CIRCUIT CONDUCTOR OF #12AWG TO ALL OUTLETS AND HOMERUN. ANY 120V, 20AMP CIRCUIT WITH HOMERUN GREATER THAN 140 FEET SHALL HAVE A BRANCH CIRCUIT CONDUCTOR OF #8AWG MINIMUM. PROVIDE ADEQUATE BOX FOR SPLICING #12AWG TO TERMINATE TO DEVICE.
  - CONTRACTOR SHALL PROVIDE ALL REQUIRED BRANCH CIRCUIT RACEWAY AND CONDUCTORS FOR CONNECTION OF DEVICES SHOWN. NEW BRANCH CIRCUITRY MAY BE ROUTED UNDERGROUND OR BELOW CONCRETE SLAB AT CONTRACTORS OPTION OTHERWISE BRANCH CIRCUITS SHALL BE ROUTED OVERHEAD. PROVIDE A DEDICATED NEUTRAL CONDUCTOR FOR ALL 120VOLT CIRCUITS.
  - PRIOR TO LOCATING ANY AND ALL DEVICES AT CASEWORK, COUNTERTOPS, ETC. THE ELECTRICAL CONTRACTOR SHALL REFER TO FINAL ARCHITECTURAL CASEWORK ELEVATIONS AND SHOP DRAWINGS TO VERIFY MOUNTING HEIGHTS AND LOCATIONS. ALL DEVICE LOCATIONS SHALL BE COORDINATED WITH THESE DRAWINGS AND/OR THE ARCHITECT PRIOR TO ROUGHING-IN.
  - EXISTING RECEPTACLES OR LIGHT SWITCHES WHICH ARE REMAINING SHALL BE CHANGED TO WHITE DEVICES WITH WHITE COVERPLATES.
  - REMOVE THREE EXISTING 20AIP SPARE BREAKERS AND PROVIDE ONE NEW 60A3P BREAKER IN THEIR PLACE.



505 Market St Suite 300 Knoxville, TN 37902  
t 865.934.1915 f 865.546.0242  
bma1915.com

**PROJECT NUMBER**  
154000

**PROJECT NAME**  
THIRD FLOOR RENOVATION

**OWNER**  
RADIO SYSTEMS CORPORATION

**PROJECT ADDRESS**  
10427 PETS SAFE WAY  
KNOXVILLE, TN 37932



ENGINEERING SERVICES GROUP, INC.  
CONSULTING ENGINEERS  
900 EAST HILL AVE, SUITE 350  
KNOXVILLE, TENNESSEE 37915  
(865) 522-0393  
PROJECT NO. 16575



|                   |            |
|-------------------|------------|
| PARTNER-IN-CHARGE | JRW        |
| PROJECT MANAGER   | NDV        |
| DRAWN BY          | RSB        |
| REVIEWED BY       | BMA        |
| ISSUE DATE        | 02.05.2016 |
| REVISIONS         |            |
| 1                 | 02.16.2016 |

**E101**  
THIRD FLOOR PLAN  
ELECTRICAL

| PANELBOARD 'C' SCHEDULE                                  |                  |            |                     |       |               |                          |     |        |                                |            |      |       |                  |
|--|------------------|------------|---------------------|-------|---------------|--------------------------|-----|--------|--------------------------------|------------|------|-------|------------------|
| VOLTAGE: 208 Y120V, 3 PHASE, 4 WRE                       |                  |            | MAIN: MAIN LUG ONLY |       |               | MOUNTING: SURFACE 6"x20" |     |        | FED FROM: SEE ONE-LINE DIAGRAM |            |      |       |                  |
| BUS SIZE: 60 AMPERES                                     |                  |            | LOAD: 8.0 KVA TOTAL |       |               | FAULT DUTY: 10,000 AC    |     |        | LOCATION: SEE DRAWINGS         |            |      |       |                  |
| CKT NO   | SERVICE TO       | LOAD (KVA) |                     |       | PHASE         |                          |     | CKT NO | D.C./P.O.                      | LOAD (KVA) |      |       |                  |
|  |                  | LTO        | RECP                | OTHER | A             | B                        | C   |        |                                | LTO        | RECP | OTHER |                  |
| 1  | LIGHTING         | 1.00       |                     |       | 20/1          | 1                        | 2.0 |        |                                | 2          | 20/1 | 1.00  | RECEPTACLE       |
| 3  | RECEPTACLE (GFI) | 1.00       |                     |       | 20/1          | 3                        |     | 2.0    |                                | 4          | 20/1 |       | RECEPTACLE       |
| 5  | RECEPTACLE (GFI) | 1.00       |                     |       | 20/1          | 5                        |     | 1.0    |                                | 6          | 20/1 |       | RECEPTACLE (GFI) |
| 7  | RECEPTACLE (GFI) | 1.00       |                     |       | 20/1          | 7                        | 1.0 |        |                                | 8          | 20/1 |       | SPARE            |
| 9  | RECEPTACLE       | 1.00       |                     |       | 20/1          | 9                        |     | 1.0    |                                | 10         | 20/1 |       | SPARE            |
| 11   | RECEPTACLE (GFI) | 1.00       |                     |       | 20/1          | 11                       |     | 1.0    |                                | 12         | 20/1 |       | SPARE            |
| PANELBOARD NOTES:  |                  |            |                     |       | PHASE TOTALS: |                          |     |        |                                |            |      |       |                  |
| 1. (GFI) PROVIDE GROUND FAULT CIRCUIT INTERRUPT BREAKER  |                  |            |                     |       | A             | B                        | C   | 4.     |                                |            |      |       |                  |
|  |                  |            |                     |       | 3.0           | 3.0                      | 2.0 | 5.     |                                |            |      |       |                  |
| TOTAL CONNECTED LOAD: 8.0 KVA AT 208Y120V = 22.2 AMPERES |                  |            |                     |       |               |                          |     |        |                                |            |      |       |                  |

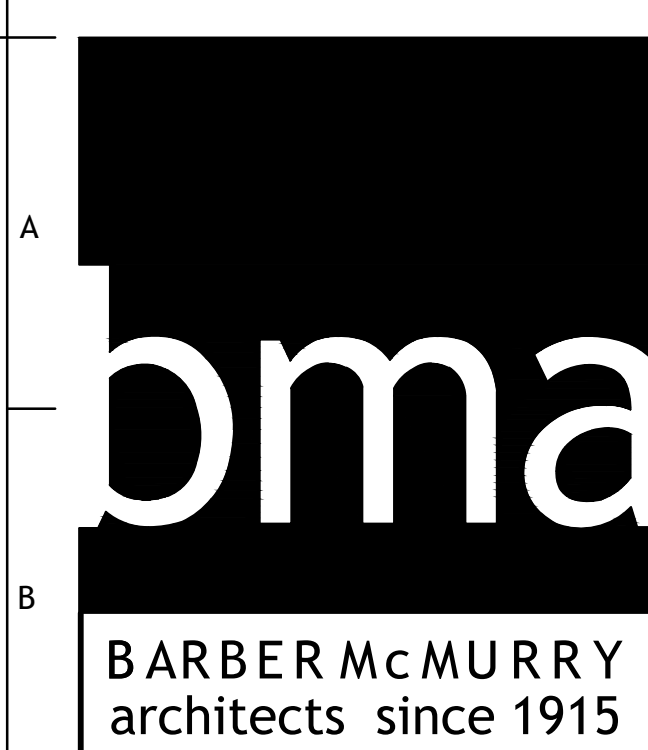
| SYMBOL | DESCRIPTION  |
|--------|--|
|        | <b>FLUORESCENT LIGHTING FIXTURE:</b><br>"A" REFERS TO DESIGNATION IN THE LIGHTING FIXTURE SCHEDULE<br>"3" REFERS TO CIRCUIT NUMBER "b" REFERS TO SWITCH CONTROL<br>"EM" INDICATES EQUIPPED WITH EMERGENCY BATTERY.   |
|        | <b>LED LIGHTING FIXTURE:</b><br>"C" REFERS TO DESIGNATION IN THE LIGHTING FIXTURE SCHEDULE<br>"2" REFERS TO SWITCH CONTROL<br>"3" REFERS TO CIRCUIT NUMBER   |
|        | <b>LIGHT SWITCH:</b><br>WALL MOUNTED 48" AFF. SINGLE POLE UNLESS NOTED OTHERWISE.<br>PROVIDE A NEUTRAL CONDUCTOR TO ALL SWITCH BOXES FOR USE BY THE WALL OCCUPANCY SENSOR. CAP WITH WIRE NUT IF NOT USED.<br>"3" 3-WAY<br>"4" 4-WAY<br>"M" MOTION SENSOR WITH MANUAL OVERRIDE. LINE VOLTAGE SENSOR UTILIZING DUAL TECHNOLOGY SENSING AND 0-10V DIMMING |
|        | <b>EXIT LIGHT FIXTURE:</b><br>WALL MOUNTED AS SHOWN ON THE DRAWINGS. SENSORS SHALL BE LOW VOLTAGE TYPE SENSORS WITH POWER PACK AS REQUIRED BY THE MANUFACTURER. SENSORS SHALL USE DUAL TECHNOLOGY SENSING. SENSORS SHALL ONLY TURN LIGHTS "OFF".   |
|        | <b>OCCUPANCY SENSOR:</b><br>WALL MOUNTED AS SHOWN ON THE DRAWINGS. SENSORS SHALL BE LOW VOLTAGE TYPE SENSORS WITH POWER PACK AS REQUIRED BY THE MANUFACTURER. SENSORS SHALL USE DUAL TECHNOLOGY SENSING. SENSORS SHALL ONLY TURN LIGHTS "OFF".   |
|        | <b>LOW VOLTAGE LIGHT SWITCH:</b><br>48" AFF. CONNECTED TO LIGHTS THRU A POWER PACK. SWITCH SHALL TURN LIGHTS "ON" AND SENSORS SHALL TURN LIGHTS "OFF"  |
|        | <b>DUPLEX PLUG RECEPTACLE:</b><br>18" AFF. 20A, 120V<br>"T" LOCATE ALONGSIDE TELEVISION OUTLET<br>"GFI" DUPLEX RECEPTACLE FED BY GROUND FAULT CIRCUIT INTERRUPT BREAKER.   |
|        | COLORED CENTER WITH BUILT-IN GROUND FAULT PROTECTION, 44" AFF. AT CASEWORK, 18" OUT OF DOORS<br>"WP" WEATHERPROOF, IN-USE, "EXTRA-DUTY" COVER AND WEATHER-RESISTANT (UL-498SE) TYPE GFCI DEVICE.<br>"R" INDICATES MOUNTED ON THE ROOF. PROVIDE DEDICATED NEUTRAL FOR EACH CIRCUIT SERVING AN OUTLET.   |
|        | <b>QUADPLEX PLUG RECEPTACLE:</b><br>PROVIDE TWO DUPLEX RECEPTACLES IN A DOUBLE GANG BOX WITH A DOUBLE GANG COVERPLATE. REFER TO RECEPTACLE DESCRIPTIONS ABOVE FOR RECEPTACLE TYPE REQUIRED.  |
|        | <b>POWER PANELBOARD:</b><br>FLUSH OR SURFACE MOUNTED, TOP 6'-0" AFF. SEE PANELBOARD SCHEDULE FOR SUPPORT INFORMATION. PANELS NOTED TO HAVE ISOLATED GROUND BAR SHALL INCLUDE IN THEIR FEEDER A SEPARATE ISOLATED GROUND CONDUCTOR OF THE SAME SIZE AS THE FEEDER GROUNDING CONDUCTOR.  |
|        | <b>VISUAL SIGNAL:</b><br>FIRE ALARM ACTIVATION SIGNAL DEVICE, ADA COMPLIANCE LISTED. MOUNT 80" AFF OR 6" BELOW CEILING, WHICHEVER IS LOWER<br>"cd" INDICATES THE CANDELA RATING.   |
|        | <b>AUDIBLE/VISUAL SIGNAL: HORN/LIGHT</b><br>FIRE ALARM SIGNAL, ACTIVATION DEVICE, ADA COMPLIANCE LISTED. MOUNT 80" AFF OR 6" BELOW CEILING, WHICHEVER IS LOWER.<br>"cd" INDICATES THE CANDELA RATING.<br>"db" INDICATES THE DECIBEL RATING.  |
|        | <b>TELEPHONE/DATA OUTLET:</b><br>4 1/16" SQUARE BOX WITH SINGLE GANG DEVICE RING AND NO TRIM PLATE. 18" AFF ROUGH-IN. CONDUITS/STUB-OUTS SHALL HAVE BUSHING ON END.<br>"C" SPECIAL MOUNTING HEIGHT IN OR AROUND CASEWORK, SEE ARCHITECTURAL DRAWINGS AND CASEWORK ELEVATIONS<br>STUB TWO 3/4" CONDUITS OUT TO ABOVE ACCESSIBLE CEILING SPACE           |
|        | <b>TELEVISION ANTENNA OUTLET:</b><br>4 11/16" SQUARE BOX WITH SINGLE GANG DEVICE RING AND NO TRIMPLATE. MOUNT 48" AFF. STUB 3/4" OUT TO ABOVE ACCESSIBLE CEILING SPACE.  |
|        | <b>ROOM SCHEDULER:</b><br>MOUNT 48" AFF. CONNECT TO EXISTING CRESTRON SYSTEM. CONTACT JOHN SEALK OF SESCO LIGHTING AT 633-9288 FOR ADDITIONAL INFORMATION. FLUSH MOUNT 4"SO BOX WITH 3/4" C, STUBBED OUT AT CEILING STRUCTURE.   |

- LEGEND NOTES:**
- DEVICES LOCATED ON OPPOSITE SIDES OF FIRE RATED PARTITIONS MUST BE SEPARATED BY A MINIMUM OF 24" HORIZONTAL DISTANCE. SEE ARCHITECTURAL PLANS FOR LOCATIONS OF FIRE RATED PARTITIONS. WHERE CONDITIONS PROHIBIT A 24" MINIMUM SEPARATION OF DEVICES, USE FIRESTOP PUTTY PADS, H.I.TI GREY17 SERIES, ON DEVICE BOXES TO MAINTAIN FIRE RATING OF PARTITION, INSTALL PADS PER MANUFACTURER'S SPECIFICATIONS. DEVICE BOXES SHALL NOT BE MOUNTED BACK TO BACK. PRIOR TO INSTALLATION OF PADS VERIFY METHOD WITH ARCHITECT AND FIRE INSPECTOR.
  - ALL CONDUITS SHALL CONTAIN AN EQUIPMENT GROUNDING CONDUCTOR WHICH IS NOT ILLUSTRATED.
  - WHERE MORE THAN ONE VISUAL DEVICE (STROBE) IS LOCATED WITHIN AN AREA, ALL VISUAL DEVICES (STROBES) WITHIN THAT AREA SHALL BE SYNCHRONIZED. THIS APPLIES TO ALL AND ANY LOCATIONS WHERE AN INDIVIDUAL CAN SEE MORE THAN ONE DEVICE FROM THE SAME LOCATION FROM WHERE THEY ARE STANDING, SITTING, ETC. PROVIDE ALL REQUIRED SYNCHRONIZED DEVICES, SYNCHRONIZING MODULES ETC. IN ORDER TO ACCOMPLISH THIS FUNCTION. REFER TO FIRE ALARM SPECIFICATIONS FOR ALL OTHER INFORMATION IN REGARD TO FIRE ALARM SYSTEM REQUIREMENTS.
  - PRIOR TO LOCATING ANY AND ALL DEVICES AT CASEWORK, COUNTERTOPS ETC., THE CONTRACTOR SHALL REFER TO FINAL ARCHITECTURAL CASEWORK ELEVATIONS AND SHOP DRAWINGS TO VERIFY MOUNTING HEIGHTS AND LOCATIONS. ALL DEVICE LOCATIONS SHALL BE COORDINATED WITH THESE DRAWINGS AND/OR THE ARCHITECT PRIOR TO ROUGH-IN.

| LIGHTING FIXTURE SCHEDULE |                     |                       |  |  |             |        |
|---------------------------|---------------------|-----------------------|--|--|-------------|--------|
| TYPE                      | LAMPS               | MOUNTING              | FIXTURE DESCRIPTION  | MANUFACTURER'S NAME AND CATALOGUE NUMBER               | INPUT WATTS | NOTES  |
| A                         | LED 900 LUMENS/FT   | PENDANT               | TEXTURED MATTE WHITE ALUMINUM HOUSING, SATIN ACRYLIC SHIELDING, 35K    | PRUDENTIAL LIGHTING SH-LED35-50-04-SAL-TMW-UNV-CAB6-ND | 9W/FT       | NOTE#4 |
| B                         | FLUORESCENT 42W/TIT | PENDANT               | ACID FROSTED OPAL GLASS SHADE WITH ALUMINUM SUSPENSION                 | HIGH TOWER ACCESS BFT100                               | 45          |        |
| C                         | LED 1000 LUMENS     | RECESSED              | 6" DIA APERTURE, COMFORT CLEAR REFLECTOR, WHITE FLANGE, 35K            | LIGHTOLIER CBL100NVBLD/CBL100L35MKCCLWB                | 13          |        |
| D                         | LED                 | PENDANT               | MATTE GREY HOUSING, 10"DIA X 12.75"H                                   | HIGH TOWER ACCESS CAR210-P2-MATTE GREY                 | 9           | NOTE#3 |
| E                         | LED 500 LUMENS      | RECESSED              | 4" DIA APERTURE, COMFORT CLEAR REFLECTOR, WHITE FLANGE, 35K            | LIGHTOLIER CAL050NVBLD/CAL05DL35MKCCLWB                | 7           |        |
| F                         | LED 380 LUMENS      | SURFACE UNDER CABINET | 22"L X .85" UNDER CABINET LIGHT WITH EVEN GLOW DIFFUSER                | FINELITE UC-E-22"-S-PS-21W                             | 6.1         |        |
| G                         | LED                 | RECESSED              | 2x4 LAY-IN WITH TWIN FROSTED ACRYLIC DIFFUSERS, 35K                    | HE WILLIAMS HETG-S24-L40/B45-A-DRY-UNV                 | 41          |        |
| H                         | LED 755 LUMENS/FT   | RECESSED              | 4" X 4" FIXTURE WITH REGRESSED FLAT ACRYLIC LENS, 35K, STANDARD OUTPUT | PRUDENTIAL LIGHTING P42-LED35-4-WA-KW-SC-UNV-X7        | 40          |        |
| X                         | LED                 | SURFACE               | WHITE ALUMINUM HOUSING, RED LETTERS, BATTERY BACK-UP, AUTOTEST         | BEGHELLI FMESALR1AT                                    |             |        |

- LIGHTING FIXTURE NOTES:**
- ALL 4' FLUORESCENT LAMPS SHALL PROVIDE 3100 LUMENS AND 36,000 HOURS LAMP LIFE. LAMPS SHALL BE 3500K LAMP TEMPERATURE. REFER TO SPECIFICATIONS FOR ADDITIONAL REQUIREMENTS FOR LIGHTING FIXTURES.
  - AS PART OF THE SHOP DRAWING SUBMITTALS THE CONTRACTOR SHALL PROVIDE A LIGHTING POWER DENSITY STATISTICS TABLE INDICATING ROOM NAME, NUMBER OF LUMINAIRES, TOTAL WATTS PER AREA, AND DENSITY (WATTS PER SQ FT) PER AREA AND A SEPARATE LINE ITEM INDICATING THE TOTALS FOR THE ENTIRE BUILDING INTERIOR. SUBMITTALS WILL NOT BE REVIEWED UNLESS THE ABOVE INFORMATION IS PROVIDED IN WHOLE AS PART OF THE LIGHTING SUBMITTAL PACKAGE. FAILURE TO SUBMIT THIS INFORMATION AS PART OF THE SUBMITTAL WILL RESULT IN REJECTING THE LIGHTING SUBMITTAL IN ITS ENTIRETY, NO EXCEPTIONS.
  - PROVIDE LED SCREW-IN BASE LAMP, SATCO #9.8A19/OMNI/300/LED/3500K
  - FIXTURES NOTED WITH "EM" SHALL HAVE EMERGENCY BATTERY OPTION "EMH" FOR 4' FIXTURE. REMOTE MOUNT AT CEILING STRUCTURE. VERIFY PENDANT LENGTHS WITH ARCHITECT PRIOR TO ROUGHING-IN.

| ELECTRICAL SPECIFICATIONS |  |
|---------------------------|--|
| A.                        | ALL WORK SHALL COMPLY WITH THE LATEST ISSUE OF ALL NATIONAL, STATE, AND LOCAL CODES.   |
| B.                        | THE ELECTRICAL CONTRACTOR SHALL OBTAIN AND PAY FOR ALL PERMITS, INSPECTIONS, AND UTILITY COMPANY FEES AS REQUIRED.   |
| C.                        | ELECTRICAL LAYOUTS ARE DIAGRAMMATICAL IN NATURE. EXACT LOCATIONS SHALL BE COVERED BY THE ARCHITECTURAL, MECHANICAL, OR SPECIFIC DRAWINGS OF EQUIPMENT OR RELATED TRADES.   |
| D.                        | THE ELECTRICAL CONTRACTOR SHALL BE RESPONSIBLE FOR ALL CUTTING AND PATCHING REQUIRED BY THEIR WORK. COORDINATE WITH GENERAL CONTRACTOR.  |
| E.                        | ALL WIRING SHALL BE IN STEEL "EMT" CONDUIT.  |
| F.                        | ALL CONDUCTORS SHALL BE TYPE "THWN/THHN" DUAL INSULATION COPPER. MINIMUM SIZE SHALL BE NO. 12 AWG. CURRENT CARRYING CAPACITY OF ALL CONDUCTORS SHALL BE BASED ON 60 DEGREE C FOR 100 AMP AND SMALLER.  |
| G.                        | ALL EXISTING RECEPTACLES AND WALL SWITCHES IN THE RENOVATED AREA WHICH ARE TO REMAIN SHALL BE CHANGED TO A WHITE DEVICE WITH A WHITE COVERPLATE. PROVIDE 20A, 120V DEVICE.   |
| H.                        | WIRING DEVICES SHALL BE HUBBELL COMMERCIAL GRADE, 20 AMP, COLOR AS SELECTED BY ARCHITECT, WHITE FINISH   |
| I.                        | COVERPLATES SHALL BE NYLON (THERMOPLASTIC), COLOR AS SELECTED BY ARCHITECT, WHITE FINISH   |
| J.                        | THE CONTRACTOR SHALL WARRANT AND GUARANTEE ALL WORK EXECUTED UNDER THIS DIVISION TO BE FREE FROM DEFECTS FOR A PERIOD OF ONE YEAR AFTER COMPLETION.  |
| K.                        | THE CONTRACTOR SHALL VISIT THE JOB PRIOR TO SUBMISSION OF HIS BID AND VERIFY EXISTING CONDITIONS. ADDITIONAL CHARGES FOR WORK REQUIRED AS A RESULT OF NOT VISITING THE SITE WILL NOT BE CONSIDERED.  |
| L.                        | VERIFY ALL ROUGH-IN FOR RECEPTACLES AND OWNER FURNISHED EQUIPMENT CONNECTIONS PRIOR TO BEGINNING CONSTRUCTION WITH OWNER.  |
| M.                        | COORDINATE ALL CONSTRUCTION DELIVERIES, DISPOSAL OF CONSTRUCTION TRASH, ETC. WITH OWNER.   |
| N.                        | CONTRACTOR SHALL MAINTAIN A SET OF RECORD DRAWINGS SHOWING ANY CHANGES AND MODIFICATIONS THAT OCCURRED DURING THE CONSTRUCTION PERIOD. AFTER COMPLETION OF CONSTRUCTION THESE RECORD DRAWINGS SHALL BE TURNED OVER TO THE OWNER.                       |
| O.                        | ALL CONDUITS AND BRANCH CIRCUITS SHALL CONTAIN AN INSULATED EQUIPMENT GROUNDING CONDUCTOR.   |
| P.                        | NEW FIRE ALARM DEVICES SHALL MATCH EXISTING BUILDING DEVICES. PROVIDE PROGRAMMING AND ADDITIONAL BATTERY CAPACITY AT THE FIRE ALARM PANEL AS NECESSARY.  |
| Q.                        | NEW PANELBOARD SHALL HAVE BOLT-ON TYPE BREAKERS. PROVIDE TYPED DIRECTORY LISTING ALL CIRCUITS USED.  |
| R.                        | AS PART OF DEMO WORK ALL EXISTING BREAKERS WHICH BECOME SPARES SHALL BE TURNED "OFF" AND MARKED AS SPARE IN THE PANEL DIRECTORY. PROVIDE NEW TYPED DIRECTORY LISTING ALL CIRCUITS USED. ALL UNUSED CIRCUITS SHALL BE TURNED "OFF" AND MARKED AS SPARE. |



505 Market St Suite 300 Knoxville, TN 37902  
t 865.934.1915 f 865.546.0242  
bma1915.com

PROJECT NUMBER  
**154000**

PROJECT NAME  
**THIRD FLOOR RENOVATION**

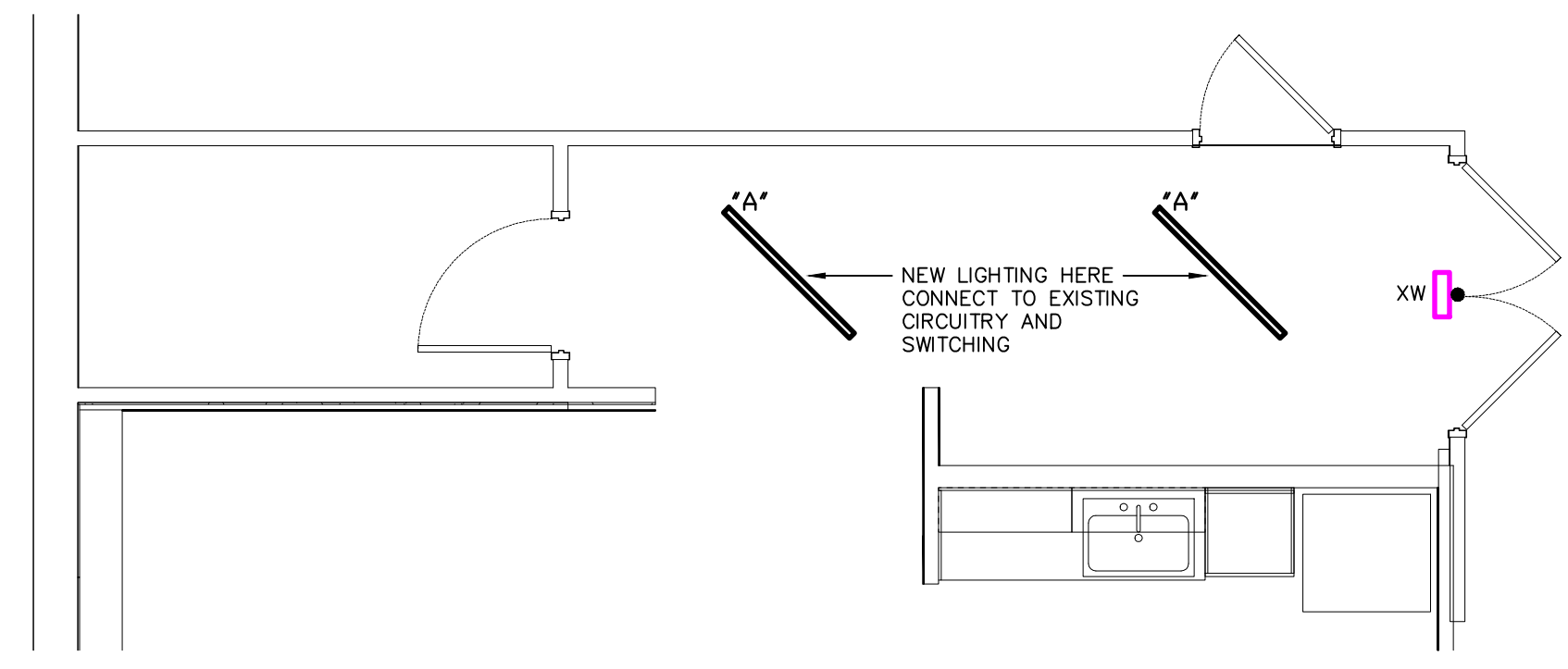
OWNER  
**RADIO SYSTEMS CORPORATION**

PROJECT ADDRESS  
**10427 PETS SAFE WAY KNOXVILLE, TN 37932**

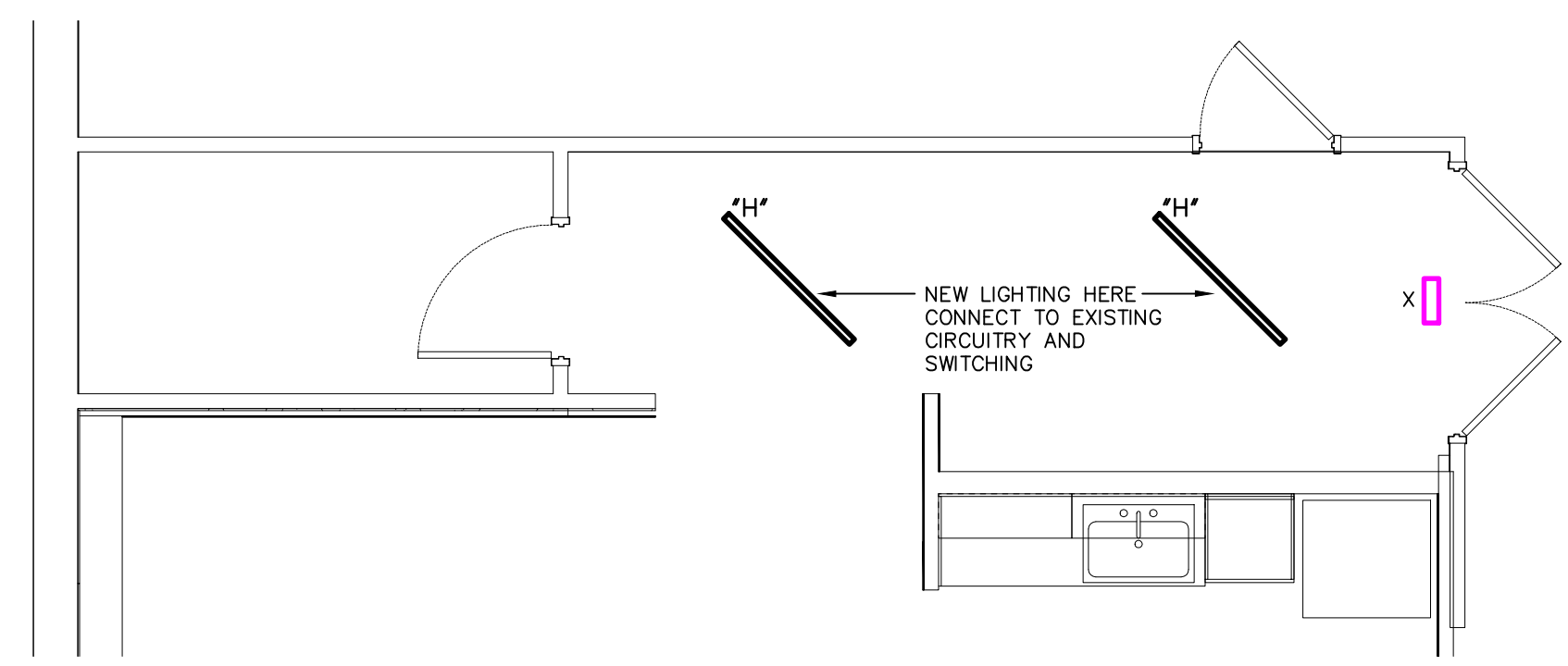


|                   |            |
|-------------------|------------|
| PARTNER-IN-CHARGE | JRW        |
| PROJECT MANAGER   | NDV        |
| DRAWN BY          | RSB        |
| REVIEWED BY       | BMA        |
| ISSUE DATE        | 02.05.2016 |
| REVISIONS         |            |
| 1                 | 02.16.2016 |

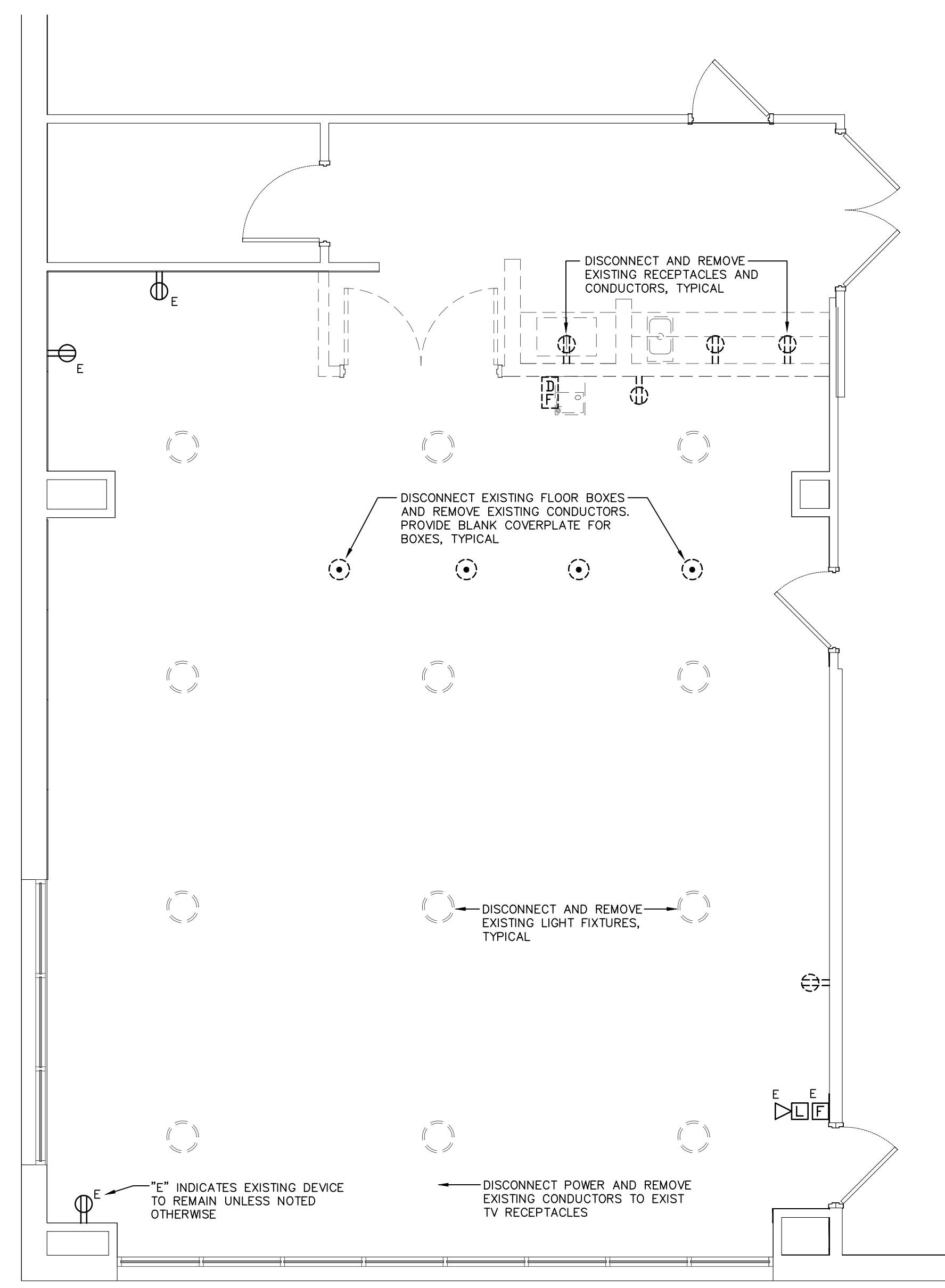
**E102**  
LEGEND, SCHEDULES & DETAILS



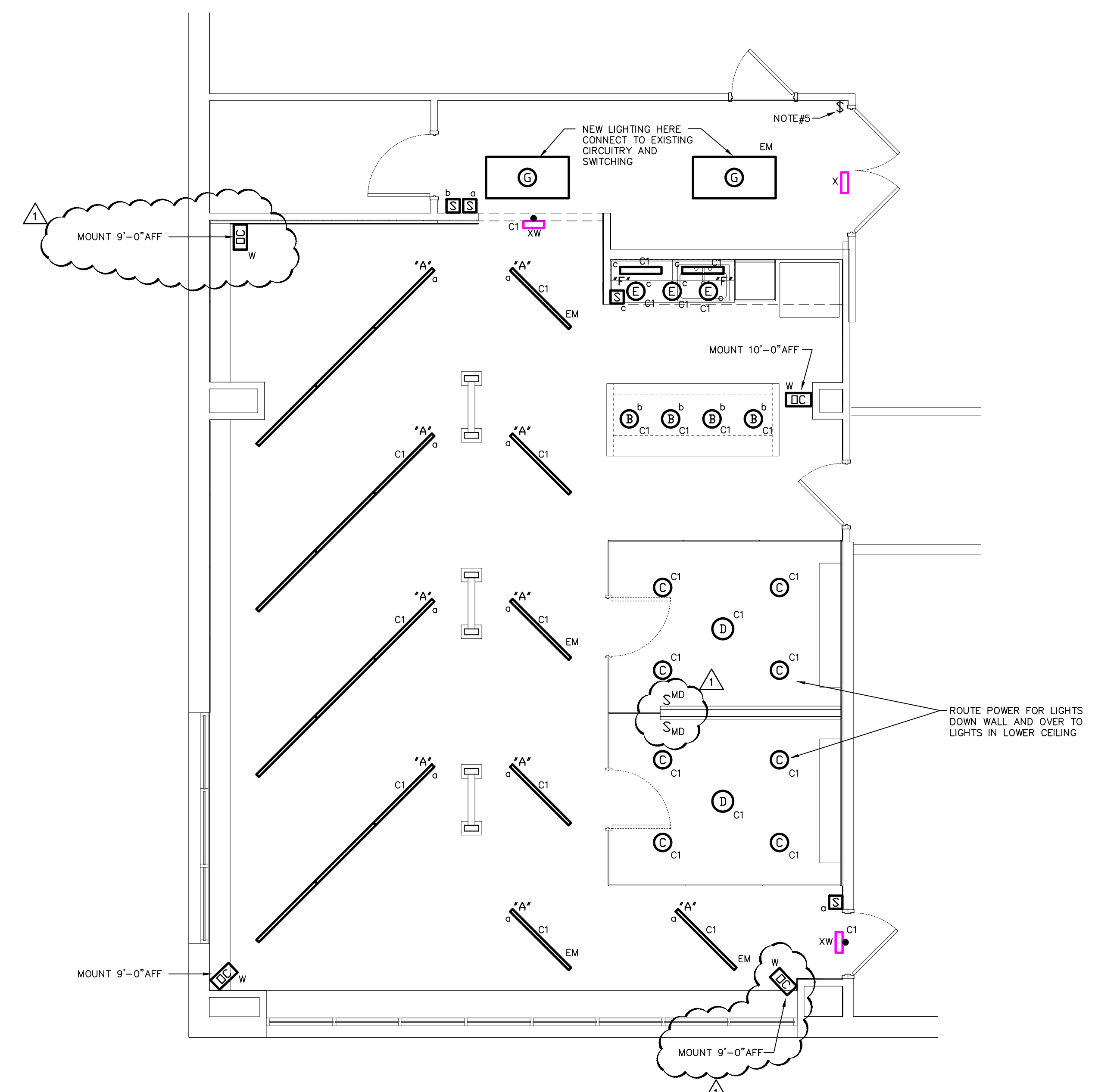
**PARTIAL PLAN -- ALTERNATE#1B -- LIGHTING**  
1/4"=1'-0"



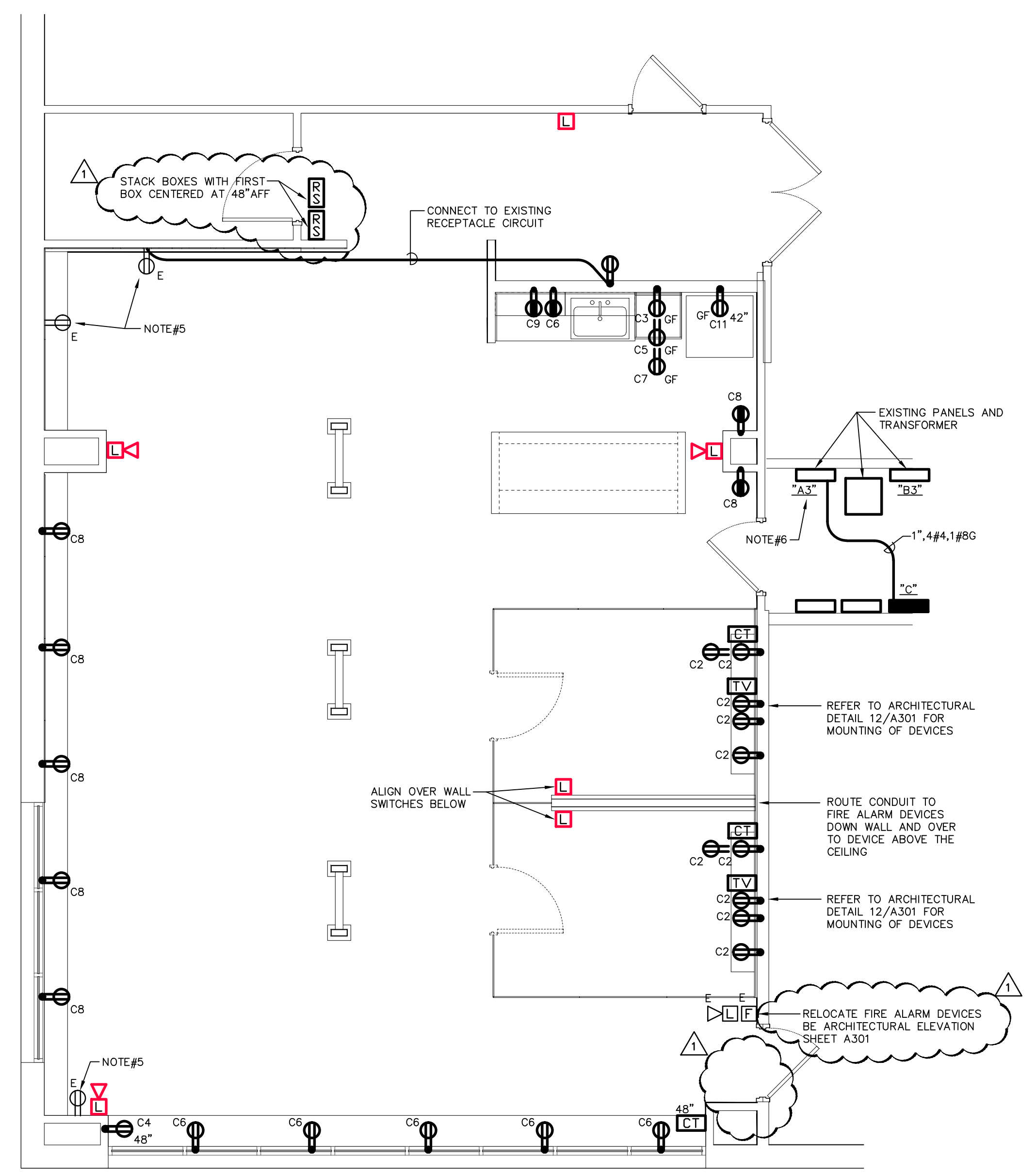
**PARTIAL PLAN -- ALTERNATE#1A -- LIGHTING**  
1/4"=1'-0"



**FLOOR PLAN -- DEMOLITION**  
1/4"=1'-0"



**FLOOR PLAN -- LIGHTING**  
1/4"=1'-0"



**FLOOR PLAN -- POWER & COMMUNICATIONS**  
1/4"=1'-0"

- NOTES:**
- REFER TO ARCHITECTURAL REFLECTED CEILING PLAN FOR EXACT LOCATION OF LIGHTING FIXTURES. COORDINATE INSTALLATION WITH CEILING RATING. PROVIDE FIRE RATED COVER FOR NON-RATED LIGHT FIXTURES WHERE REQUIRED. COVER MAY BE A MANUFACTURED, UL LISTED PRODUCT OR BE SITE FABRICATED AND SHALL BE COMPATIBLE WITH THE ASSOCIATED FIXTURE, INCLUDING "IC" RATING. COVERS SHALL MEET OR EXCEED THE FIRE RATING OF THE CEILING AND AHU REQUIREMENTS.
  - BRANCH CIRCUIT WIRING: 120V, 20AMP CIRCUITS WITH HOMERUNS GREATER THAN 70 FEET SHALL HAVE CIRCUIT CONDUCTORS OF #10AWG AS MINIMUM. ANY 120V, 20AMP CIRCUIT WITH OUTLETS GREATER THAN 100 FEET OF BRANCH CIRCUIT LENGTH SHALL HAVE MINIMUM CIRCUIT CONDUCTOR OF #12AWG TO ALL OUTLETS AND HOMERUN. ANY 120V, 20AMP CIRCUIT WITH HOMERUN GREATER THAN 140 FEET SHALL HAVE A BRANCH CIRCUIT CONDUCTOR OF #8AWG MINIMUM. PROVIDE ADEQUATE BOX FOR SPLICING #12AWG TO TERMINATE TO DEVICE.
  - CONTRACTOR SHALL PROVIDE ALL REQUIRED BRANCH CIRCUIT RACEWAY AND CONDUCTORS FOR CONNECTION OF DEVICES SHOWN. NEW BRANCH CIRCUITRY MAY BE ROUTED UNDERGROUND OR BELOW CONCRETE SLAB AT CONTRACTORS OPTION OTHERWISE BRANCH CIRCUITS SHALL BE ROUTED OVERHEAD. PROVIDE A DEDICATED NEUTRAL CONDUCTOR FOR ALL 120VOLT CIRCUITS.
  - PRIOR TO LOCATING ANY AND ALL DEVICES AT CASEWORK, COUNTERTOPS, ETC. THE ELECTRICAL CONTRACTOR SHALL REFER TO FINAL ARCHITECTURAL CASEWORK ELEVATIONS AND SHOP DRAWINGS TO VERIFY MOUNTING HEIGHTS AND LOCATIONS. ALL DEVICE LOCATIONS SHALL BE COORDINATED WITH THESE DRAWINGS AND/OR THE ARCHITECT PRIOR TO ROUGHING-IN.
  - EXISTING RECEPTACLES OR LIGHT SWITCHES WHICH ARE REMAINING SHALL BE CHANGED TO WHITE DEVICES WITH WHITE COVERPLATES.
  - REMOVE THREE EXISTING 20AIP SPARE BREAKERS AND PROVIDE ONE NEW 60A3P BREAKER IN THEIR PLACE.



505 Market St Suite 300 Knoxville, TN 37902  
t 865.934.1915 f 865.546.0242  
bma1915.com

**PROJECT NUMBER**  
154000

**PROJECT NAME**  
THIRD FLOOR RENOVATION

**OWNER**  
RADIO SYSTEMS CORPORATION

**PROJECT ADDRESS**  
10427 PETS SAFE WAY  
KNOXVILLE, TN 37932



|                   |            |
|-------------------|------------|
| PARTNER-IN-CHARGE | JRW        |
| PROJECT MANAGER   | NDV        |
| DRAWN BY          | RSB        |
| REVIEWED BY       | BMA        |
| ISSUE DATE        | 02.05.2016 |
| REVISIONS         |            |
| 1                 | 02.16.2016 |

**E101**  
THIRD FLOOR PLAN  
ELECTRICAL