

MEMBERS OF THE AMERICAN INSTITUTE OF ARCHITECTS

COPYRIGHT 2015 ALL RIGHTS RESERVED
PRINTED OR ELECTRONIC DRAWINGS AND DOCUMENTATION MAY NOT BE REPRODUCED IN ANY FORM WITHOUT WRITTEN PERMISSION FROM LS3P ASSOCIATES LTD.

REVISIONS:

No.	Description	Date

PROJECT: 314025.A0
DATE: 04/08/2015
DRAWN BY: BSB
CHECKED BY: CRB

FOUNDATION - SANITARY AND STORM PIPING PLAN

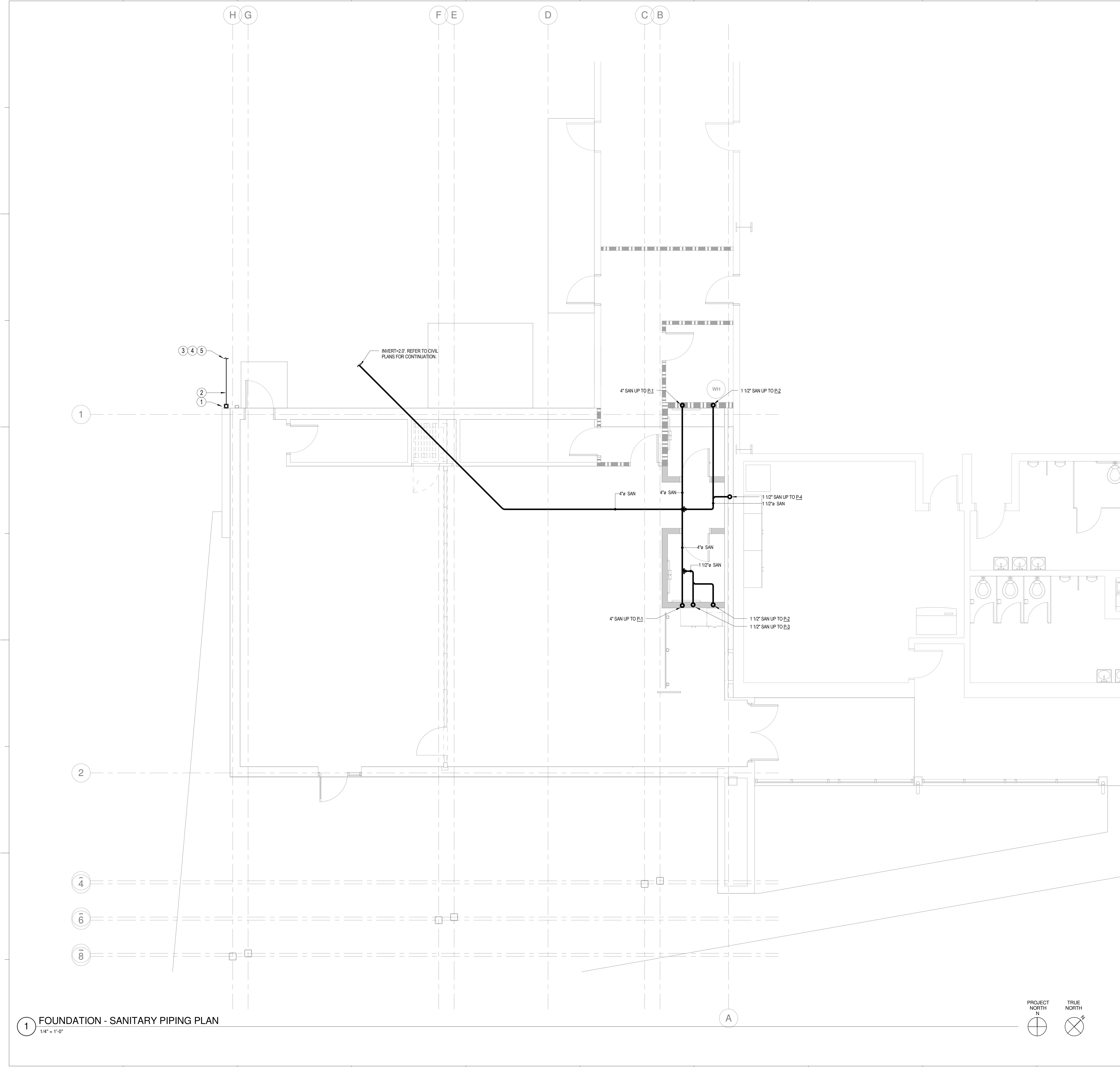
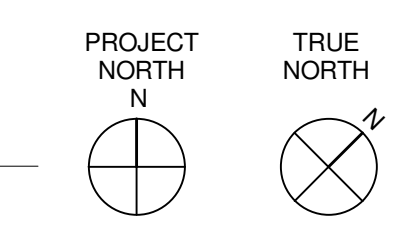
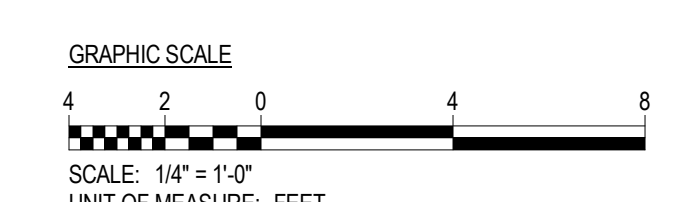
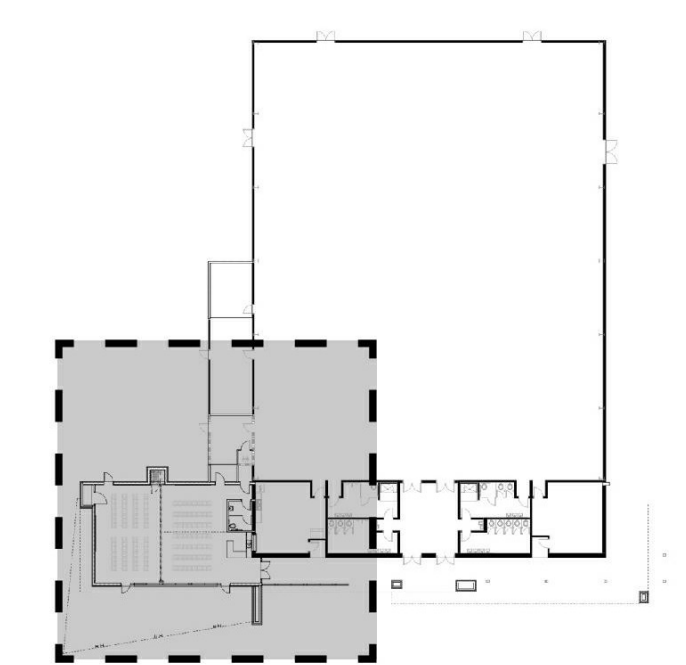
P-100

ISSUE FOR BID

DRAWING NOTES

- 1 PROVIDE NEENAH OR EQUAL MODEL R-4927-G (5'x5') C.I. DOWNSPOUT BOOT, CONNECT TO BUILDING GUTTER DOWNSPOUTS AS REQUIRED. COORDINATE EXACT LOCATION WITH GENERAL CONTRACTOR.
- 2 RUN 3" CAST IRON STORM DRAIN LINE TO OUTSIDE OF BUILDING AND CONNECT TO STORM DRAIN LINE PROVIDED BY CIVIL.
- 3 MINIMUM PIPE COVER SHALL BE 12" BELOW FINISH GRADE.
- 4 COORDINATE ALL PIPING CONNECTIONS POINTS, ETC WITH GENERAL CONTRACTOR AND CIVIL DRAWINGS.
- 5 PLUMBING CONTRACTOR SHALL MAKE FINAL CONNECTION AT 5' 0" MARK OF OF BUILDING.

KEYPLAN



1 FOUNDATION - SANITARY PIPING PLAN
1/4" = 1'-0"

c:\p\p\Projects\2014\314025\A0_MEP_14_bressieb.rvt
4/15/2015 9:54:30 AM