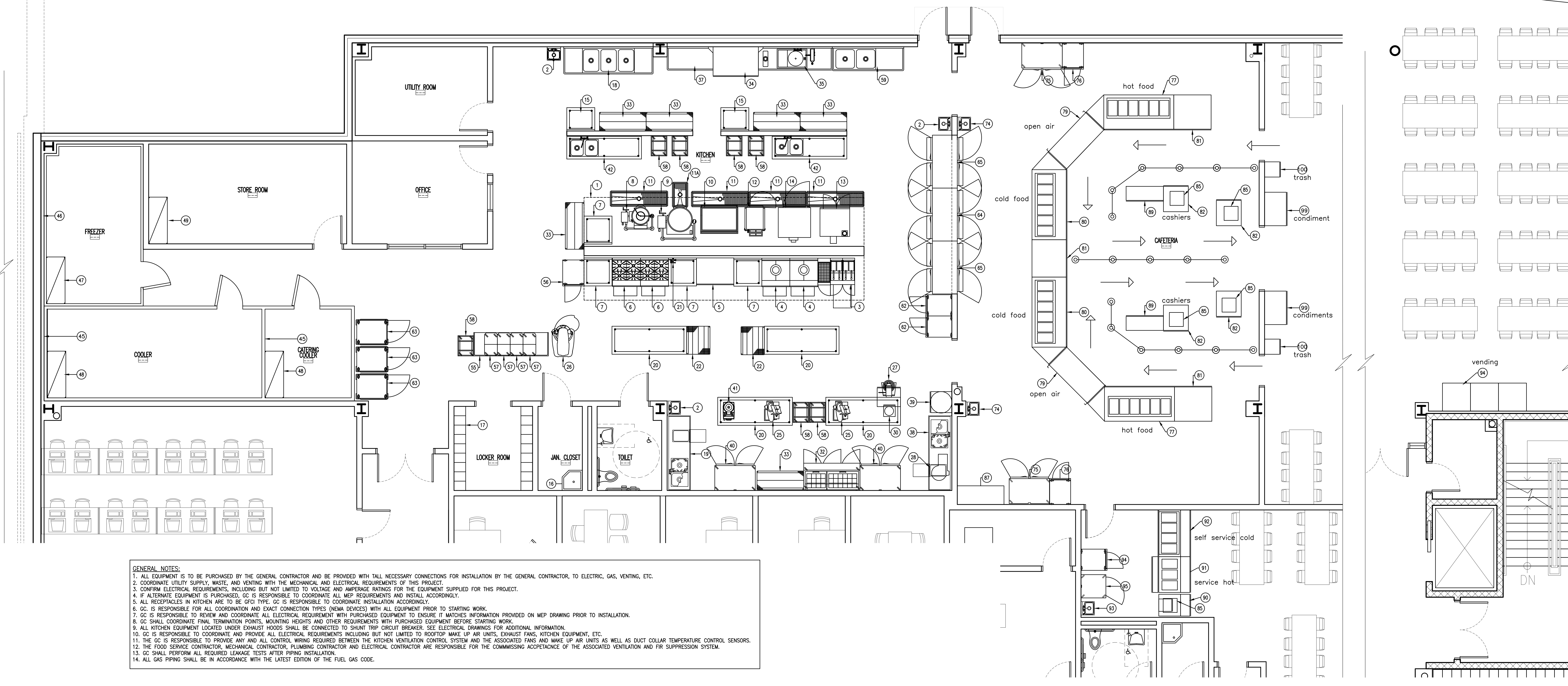


COMERCO COPPA ARCHITECTS  
97 LACKAWANNA AVENUE  
TOWANA, NJ 07512  
TEL: (973) 890-8989  
FAX: (973) 890-8955  
E-MAIL: architects@comerco.com

S. M. COPPA, AIA  
AI-08322

PASSAIC COUNTY TECHNICAL INSTITUTE  
NEW S.T.E.M. BUILDING  
WAYNE, NEW JERSEY



**GENERAL NOTES:**  
1. ALL EQUIPMENT IS TO BE PURCHASED BY THE GENERAL CONTRACTOR AND BE PROVIDED WITH ALL NECESSARY CONNECTIONS FOR INSTALLATION BY THE GENERAL CONTRACTOR, TO ELECTRIC, GAS, VENTING, ETC.  
2. COORDINATE UTILITY SUPPLY, WASTE, AND VENTING WITH THE MECHANICAL AND ELECTRICAL REQUIREMENTS OF THIS PROJECT.  
3. CONFIRM ELECTRICAL REQUIREMENTS, INCLUDING BUT NOT LIMITED TO VOLTAGE AND AMPERAGE RATINGS FOR THE EQUIPMENT SUPPLIED FOR THIS PROJECT.  
4. IF ALTERNATE EQUIPMENT IS PURCHASED, GC IS RESPONSIBLE TO COORDINATE ALL MEP REQUIREMENTS AND INSTALL ACCORDINGLY.  
5. ALL RECEPTACLES IN KITCHEN ARE TO BE GFCI TYPE. GC IS RESPONSIBLE TO COORDINATE INSTALLATION ACCORDINGLY.  
6. GC IS RESPONSIBLE FOR ALL COORDINATION AND EXACT CONNECTION TYPES (NEMA DEVICES) WITH ALL EQUIPMENT PRIOR TO STARTING WORK.  
7. GC IS RESPONSIBLE TO REVIEW AND COORDINATE ALL ELECTRICAL REQUIREMENTS WITH PURCHASED EQUIPMENT TO ENSURE IT MATCHES INFORMATION PROVIDED ON MEP DRAWING PRIOR TO INSTALLATION.  
8. GC SHALL COORDINATE FINAL TERMINATION POINTS, MOUNTING HEIGHTS AND OTHER REQUIREMENTS WITH PURCHASED EQUIPMENT BEFORE STARTING WORK.  
9. ALL KITCHEN EQUIPMENT LOCATED UNDER EXHAUST HOODS SHALL BE CONNECTED TO SHUNT TRIP CIRCUIT BREAKER. SEE ELECTRICAL DRAWINGS FOR ADDITIONAL INFORMATION.  
10. GC IS RESPONSIBLE TO COORDINATE AND PROVIDE ALL ELECTRICAL REQUIREMENTS INCLUDING BUT NOT LIMITED TO ROOFTOP MAKE UP AIR UNITS, EXHAUST FANS, KITCHEN EQUIPMENT, ETC.  
11. THE GC IS RESPONSIBLE TO PROVIDE ANY AND ALL CONTROL WIRING REQUIRED BETWEEN THE KITCHEN VENTILATION CONTROL SYSTEM AND THE ASSOCIATED FANS AND MAKE UP AIR UNITS AS WELL AS DUCT COLLAR TEMPERATURE CONTROL SENSORS.  
12. THE FOOD SERVICE CONTRACTOR, MECHANICAL CONTRACTOR, PLUMBING CONTRACTOR AND ELECTRICAL CONTRACTOR ARE RESPONSIBLE FOR THE COMMISSING ACCEPTANCE OF THE ASSOCIATED VENTILATION AND FIRE SUPPRESSION SYSTEM.  
13. GC SHALL PERFORM ALL REQUIRED LEAKAGE TESTS AFTER INSTALLATION.  
14. ALL GAS PIPING SHALL BE IN ACCORDANCE WITH THE LATEST EDITION OF THE FUEL GAS CODE.

1 ENLARGED KITCHEN PLAN  
1/4" = 1'-0"

ItemNo	Quantity	Equipment Remarks	Category	Mfr	Model	Gas Size(in)	Gas MBTU	Cold Water (in)	Hot Water (in)	Direct Waste Size	Indirect Waste Size	Voltage	Amps	Phase	Hp
<b>EQUIPMENT SCHEDULE</b>															
LOT OF EQUIPMENT FOR KITCHEN															
MAIN COOKING AREA															
1	1	SEE FS DRAWINGS	ISLAND VENTILATION SYSTEM	CAPTIVE	8030ND-3-PRP-F										
2	3		HAND SINK	ADVANCE TABCO	7-PS-65			1/2"	1/2"	1-1/2"					
3	1		FRYER BATTERY, ELECTRIC	PITCO	SE 142-2FD							(2) 208	6.3	(2) 3	
4	1		HD RANGE, 36" FRENCH HOT TOP	PITCO	FRH-3614							120			
5	2		CHARBROILER	VULCAN	PRE5R62A1114	1-1/4"	95.0								
6A	1		HD RANGE, 36" 4 OPEN BURNERS	VULCAN	FM-RV6L44GR		200.0								
6B	1		HD RANGE, 36" 4 OPEN BURNERS	VULCAN	PRE5R62A1114	1-1/4"	182.0								
7	1		FILLER WORK TABLE	ADVANCE TABCO	VKS-363										
8	1		TILTING GAS STEAM KETTLE	CLEVELAND	KGL25T	3/4"	90.0	1/2"	1/2"			120	5.0	1	
9	1		TILTING GAS STEAM KETTLE	CLEVELAND	KSG 60T	3/4"	190.0	1/2"	1/2"			120	10.0	1	
10	1		TILTING SKILLET, GAS	CLEVELAND	SG140TR	3/4"	130.0			1/2"	1/2"	120	1.8	1	
FLOOR TROUGHS AT POT WASH AREA AND COOKING AREA															
11	4		FLOOR TROUGH	ADVANCE TABCO	FTG-1872					4"					
11A	1		FLOOR TROUGH	ADVANCE TABCO	FTG-1830					4"					
12	1		BOILERLESS STEAMER	CLEVELAND	(2) 22CG786.1	1/2"	32.0	3/4"			1-1/2"	115	4.0	1	
13	1		CONVECTION OVEN	CLEVELAND	SP514							115	4.0	1	3/4
13A	1		BLOODETT OVEN	ZEPH-200-G-ES DBL		3/4"	50.0					115	8.0	1	3/4
13B	1		BLOODETT OVEN	ZEPH-200-G-ES DBL		3/4"	50.0					115	8.0	1	3/4
14	1		COMBI OVEN	CLEVELAND	(2) 22CG786.1	1/2"	32.0	3/4"			1-1/2"	115	4.0	1	
15	1		EVERPURE	EV9787-22		3/4"						(2) 115	(2) 12.0	(2) 1	
16	1		WORK TABLE JANITOR AREA	ADVANCE TABCO	9-OP-48DF					2"					
17	18		LOCKER ROOM	T&S BRASS	B-0363			1/2"	1/2"						
18	1		LOCKER	UPDATE	LKR-48GA										
19	1		THREE (3) COMPARTMENT SINK	ADVANCE TABCO	94-83-60-24RL			1/2"	1/2"		(3) 1-1/2"				
20	1		WORK TABLE WITH SINK(S)	T&S BRASS	B-0231			1/2"	1/2"						
21	1		WORK TABLE	T&S BRASS	B-013A-DP-12-BC			1/2"	1/2"		(2) 1-1/2"				
22	1		WORK TABLE	ADVANCE TABCO	DL-30-96			1/2"	1/2"						
23	1		POT / KETTLE FILLER FAUCET	ADVANCE TABCO	MPY-20CN06			1/2"	1/2"						
24	4		WIRE SHELVING	T&S BRASS	SS-368			1/2"	1/2"						
25A	1		FOOD PREP EQUIPMENT	GLOBE	3850N		115	7.0	1	1/2					
25B	1		FOOD SLICER	GLOBE	3850N		115	7.0	1	1/2					
26	1		PLANETARY MIXER	HOBART	HL600-BUILDUP										2-7/10
27	1		PLANETARY MIXER	HOBART	HL600-1		200-240								
28	1		ELECTRIC FOOD CUTTER	GLOBE	SP20		115	6.0	1	1/2					
29	1		MICROWAVE OVEN	HOBART	84196-1		115	16.6	1	2					
30	2		FOOD PROCESSOR	PANASONIC	NE-21521		120	17.0	1	2					
31	2		PANINI GRILL	WARING	WPD250TB		208	13.5	1	2					
32	1		MEGA TOP SANDWICH SAUSAGE PREPARATION REFRIGERATOR	TRUE	TSSU-72-30M-B-ST		115	10.3	1	1/2					
33	32		POT/PAN CLEANING STATION	METRO	2460NK3										
34	1		DISHWASHER POT/PAN/UTENSIL DOOR TYPE	HOBART	PW69R-1			3/4"	3/4"		7/8"	208-240	58.6	3	
35	1		POT WASH	SALVADOR	PR14			1/2"	1/2"	2"	1-1/2"	208	5.5	1	3/4
36	1		SOLID DISHTABLE	ADVANCE TABCO	DTCS-300AR			1/2"	1/2"						
37	1		CLEAN DISHTABLE	T&S BRASS	B-1433			1/2"	1/2"						
38	1		VEGETABLE PREP AREA	ADVANCE TABCO	DTCS-300-2XL			1/2"	1/2"						
39	1		VEGETABLE PREP AREA	ADVANCE TABCO	DL-30-96						(2) 1-1/2"				
40	1		VEGETABLE DRYER	DELFIELD	SALD-1			1/2"	1/2"			115	2.7	1	
40A	1		REACH-IN REFRIGERATOR	TRAUJSEN	G20010		115	7.4	1	1/3	1-1/2"				1/3
41	1		REACH-IN REFRIGERATOR	TRAUJSEN	G20010		115	7.4	1	1/3					1/3
42	1		MIXER VERTICAL CUTTER VOM	RIOLITSA	R10-LTSA		208-240	11.6	3	4-1/2					
42A	1		WORK TABLE	ADVANCE TABCO	SKG-308										
43	2		WORK TABLE	ADVANCE TABCO	TA-11B-2						(2) 1-1/2"				
43A	1		WORK TABLE	T&S BRASS	B-0231			1/2"	1/2"						
43B	1		WORK TABLE	ADVANCE TABCO	TA-11B-2						(2) 1-1/2"				
44	2		WORK TABLE	ADVANCE TABCO	K-5										
45	1		WORK TABLE	T&S BRASS	B-0231			1/2"	1/2"						

ItemNo	Quantity	Equipment Remarks	Category	Mfr	Model	Gas Size(in)	Gas MBTU	Cold Water (in)	Hot Water (in)	Direct Waste Size	Indirect Waste Size	Voltage	Amps	Phase	Hp
<b>EQUIPMENT SCHEDULE</b>															
EQUIPMENT LISTED FOR MAIN CAFETERIA															
43	1		WALK-IN COOLER/REFREEZER BOXES	MASTERBILT	MB1642849JO-D							208-230	46.0/27.0	1	(1) 1.3 / 0.5
44	1		WALK-IN FREEZER SELF-CONTAINED	MASTERBILT	MB1642849JO-A							208-230	105.0	1	3
45	1		WALK-IN COOLER SELF-CONTAINED	MASTERBILT	MB1642849JO-D							208-230	46.0/27.0	1	(1) 1.3 / 0.5
46	1		WALK-IN FREEZER SELF-CONTAINED	MASTERBILT	MB1642849JO-A							208-230	105.0	1	3
47	36		WIRE SHELVING	METRO	2460NK3										
48	60		WIRE SHELVING	METRO	2460NK3										
49	60		WIRE SHELVING	METRO	2460NK3										
50	1		BAKERS TABLE	ADVANCE TABCO	TSS-308							120	16.7	1	
51	4		PROOFER CABINET	METRO	CS39-HLFC-JA							120	12.0	1	
52	1		INGREDIENT BIN	CAUBRIO	IBS27148										
53	14		PAN RACK BURN	CHANNEL	4014										
54	1		TWO (2) COMPARTMENT SINK	ADVANCE TABCO	B-42-48-36R			1/2"	1/2"		(2) 1-1/2"				
55	1		BAKERS TABLE	ADVANCE TABCO	TSS-308							120	16.7	1	
56	1		PROOFER CABINET	METRO	CS39-HLFC-JA							120	12.0	1	
57	4		INGREDIENT BIN	CAUBRIO	IBS27148										
58	14		PAN RACK BURN	CHANNEL	4014										
59	1		TWO (2) COMPARTMENT SINK	ADVANCE TABCO	B-42-48-36R			1/2"	1/2"		(2) 1-1/2"				
60	1		BAKERS TABLE	ADVANCE TABCO	TSS-308							120	16.7	1	
61	1		PROOFER CABINET	METRO	CS39-HLFC-JA							120	12.0	1	
62	2		HEATED CABINET MOBILE	METRO	CS39-HLFC-U							120	12.0	1	
63	3		HEATED CABINET MOBILE	METRO	CS39-HLFC-U							120	12.0	1	
64	1		ROLL-THRU HEATED CABINET	TRAUJSEN	AR232L-P-FHS							208/115	15.5	1	
65A	1		REFRIGERATOR	TRAUJSEN	AR232L-P-FHS							115	13.4	1	1/2
65B	1		REFRIGERATOR	TRAUJSEN	AR232L-P-FHS							115	13.4	1	1/2
66	6		REFRIGERATOR RACK, ROLL-IN	CHANNEL	455A-HD										
67	2		REFRIGERATOR RACK, ROLL-IN	CHANNEL	455A-HD										
68	1		REFRIGERATOR RACK, ROLL-IN	CHANNEL	455A-HD										
69	2		REFRIGERATOR RACK, ROLL-IN	CHANNEL	455A-HD										
70	2		REFRIGERATOR RACK, ROLL-IN	CHANNEL	455A-HD										
71	1		REFRIGERATOR RACK, ROLL-IN	CHANNEL	455A-HD										
72	1		REFRIGERATOR RACK, ROLL-IN	CHANNEL	455A-HD										

ItemNo	Quantity	Equipment Remarks	Category	Mfr	Model	Gas Size(in)	Gas MBTU	Cold Water (in)	Hot Water (in)	Direct Waste Size	Indirect Waste Size	Voltage	Amps	Phase	Hp
<b>EQUIPMENT SCHEDULE</b>															
EQUIPMENT LISTED FOR TEACHERS ROOM															
74	2		HAND SINK	ADVANCE TABCO	7-PS-65			1/2"	1/2"	1-1/2"					