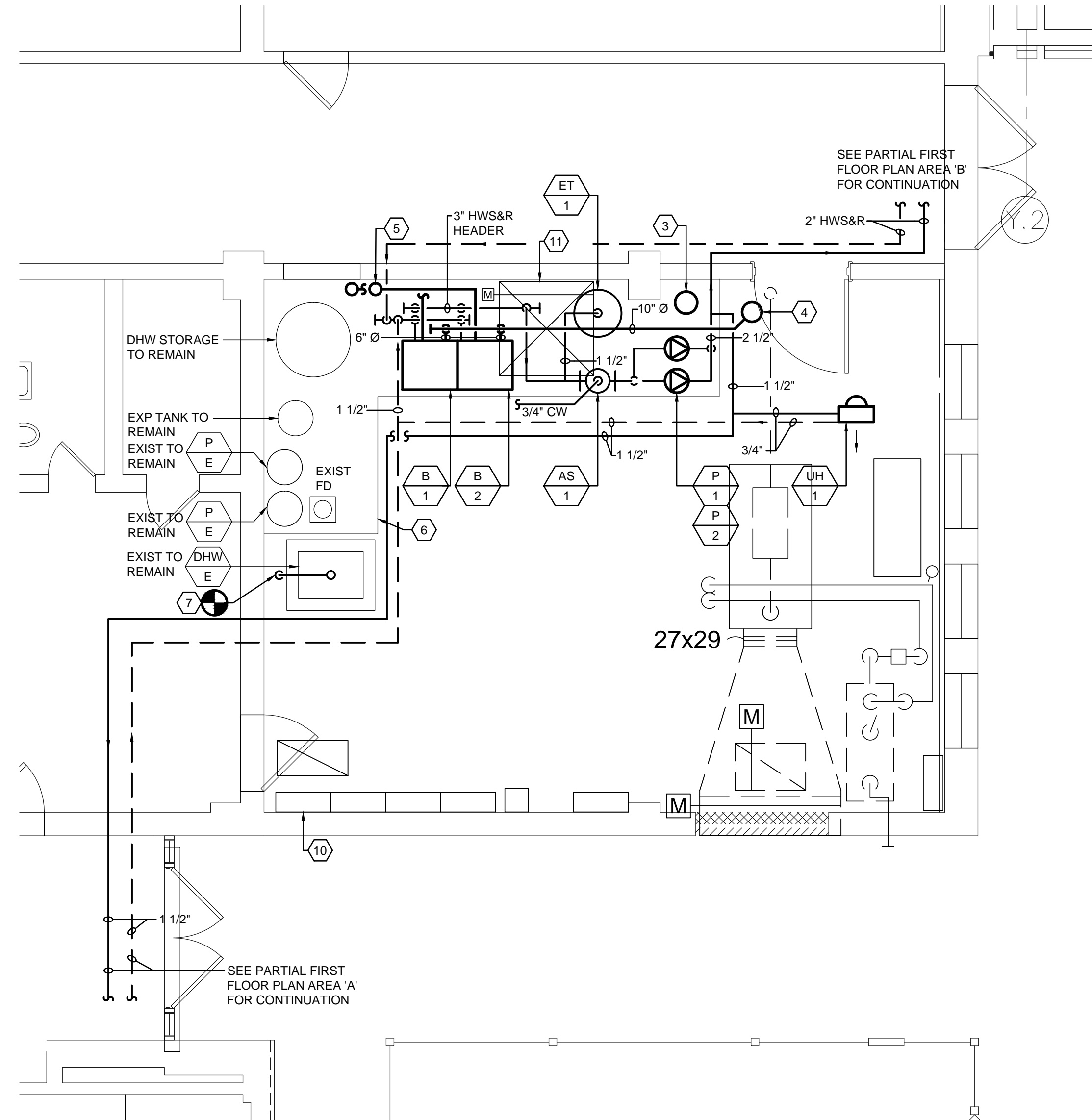


PARTIAL FIRST FLOOR PLAN - AREA 'B'
SCALE: 1/8" = 1'-0"



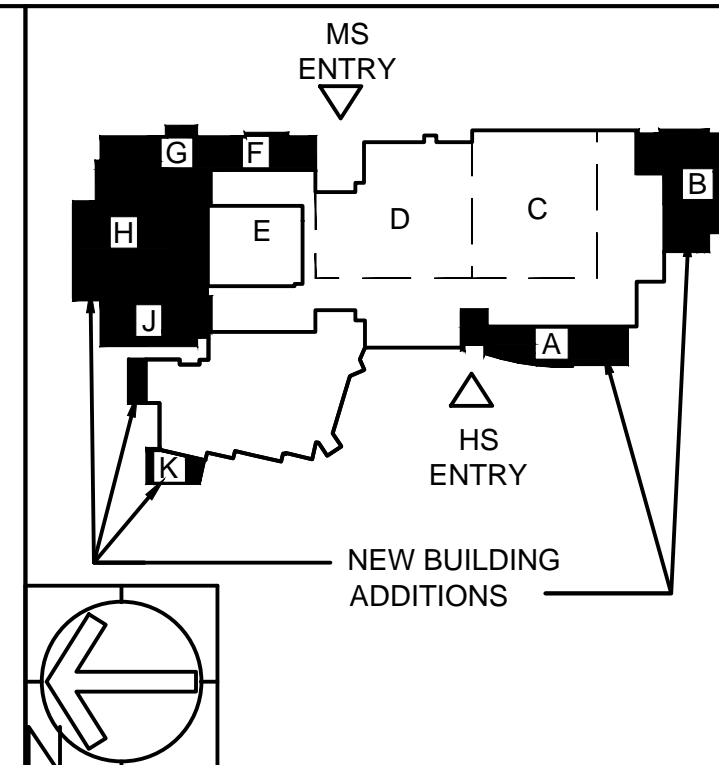
ENLARGED BOILER ROOM PLAN
SCALE: 1/4" = 1'-0"

SHEET NOTES

1. SEE FIRST FLOOR PLAN - ATC FOR LOCATION OF ALL THERMOSTATS.

KEY NOTES

- 1 1" CONDENSATE DRAIN PIPING THRU WALL 6" ABOVE FINISHED GRADE WITH PIPE SLEEVE. CORE DRILL WALL AND SEAL PIPE AND ANNULAR SPACE WATERTIGHT. PIPE TO DRYWELL BELOW GRADE - SEE DETAIL.
- 2 WITH DUCT MOUNTED TURNING VANES, TYPICAL.
- 3 CHEMICAL TREATMENT BYPASS FILTER FEEDER. CONNECT 3/4" INLET FLOW FROM PUMP DISCHARGE & 3/4" OUTLET FLOW TO PUMP INLET.
- 4 **BASE BID:** 10" Ø VENT UP TO ROOF. RUN MINIMUM 6'-0" ABOVE ROOF. KEEP HORIZONTAL HEADER AT 8' AFF.
ALTERNATE NO. 4: 10" Ø VENT UP TO ROOF THRU EXISTING GENERATOR EXHAUST VENT OPENING. RUN MINIMUM 6'-0" ABOVE ROOF. KEEP HORIZONTAL HEADER AT 8' AFF.
- 5 6" Ø COMBUSTION AIR DUCT UP THRU ROOF.
- 6 EXISTING CONCRETE PAD TO REMAIN. PATCH AS REQUIRED. SEE DETAIL.
- 7 FURNISH & INSTALL VENT FOR CATEGORY IV (CONDENSING POSITIVE PRESSURE). EXISTING SIZE WAS 9" ID - VERIFY CORRECT SIZE WITH MANUFACTURER. PROVIDE SAF-T VENT CI PLUS BY HEAT FAB, A DOUBLE-WALL COMMERCIAL UL 1738 SPECIAL GAS SYSTEM WITH AL29-4C STAINLESS STEEL INNER PIPE, 430 STAINLESS STEEL OUTER PIPE AND 1" FIBER BLANKET INSULATION BETWEEN INNER & OUTER WALL. TERMINATE VENT MINIMUM 3'-0" ABOVE ROOF SURFACE.
- 8 FULL SIZE SUPPLY/RETURN UP TO UNIT WITH FLEXIBLE CONNECTION.
- 9 10x4 UP TO EF ON ROOF. TRANSITION AS REQUIRED.
- 10 EXISTING ATC PANEL. SEE FIRST FLOOR PLAN - ATC FOR ADDITIONAL INFORMATION.
- 11 EXISTING OAI TO REMAIN WITH MOTORIZED DAMPER. SEE ROOF PLAN - ATC FOR ADDITIONAL INFORMATION.



di cara rubino architects
30 galesi drive
wayne, nj 07470
tel 973.256.0202 | fax 973.256.0227

MEMBERS OF THE AMERICAN INSTITUTE OF ARCHITECTS
GERMANO RUBINO, AIA NJ # AI 08084
JOSEPH DI CARA, AIA NJ # AI 08265
NOT VALID FOR BUILDING UNLESS SIGNED AND SEALED BY ARCHITECT

X Board President of Schools,
X Superintendent of Schools,

FRENCH & PARRELLO ASSOCIATES, PA, CONSULTING ENGINEERS
1800 Route 34, Suite 101 • Wall, NJ • 07719 • 732 312-9800

KEVIN DWYER, PE
PROFESSIONAL ENGINEER, NJ LIC. No. 35254

BUILDING ADDITION AND INTERIOR RENOVATIONS AT:
SECAUCUS MIDDLE HIGH SCHOOL
11 MILL RIDGE ROAD
SECAUCUS, NJ 07094

SECAUCUS BOARD OF EDUCATION

MECHANICAL FIRST FLOOR PLAN - AREA 'B'

REV.	DATE:	DRN	CHK	
	9/2/14	CBR	JSK	PROGRESS SET FOR CM
	9/22/14	CBR	JSK	80% CODE REVIEW
	11/5/14	CBR	JSK	CODE REVIEW
	1/5/15	CBR	JSK	BID SET

STATE PROJECT NO. 4730-050-13-1000	
PROJECT NO. 2718	SHEET NO. M4.2

D:\1\1500\1539 - Secaucus DOE\1539-009 - Referendum HS-MS Addition\CADD\DWG\1539-009 - R1.1.dwg