

ADDENDUM NO. CC-3

to the  
Bidding Documents

for

BCDM Architects  
1015 North 98th Street, Suite 300  
Omaha, Nebraska 68114

22 January 2015

MILLARD NORTH HIGH SCHOOL  
CONNECTOR ADDITION  
1010 South 144<sup>th</sup> Street  
Omaha, NE 68154  
BCDM Project No. 3029-24

**NOTE: ADDENDA MAY BE VIEWED AT [WWW.ADTECHPLANS.COM](http://WWW.ADTECHPLANS.COM)**

**REMINDER: BID DATE AND TIME: JANUARY 27, 2015 AT 2:00 P.M. LOCAL TIME at DSAC ROOM A**

NOTICE TO BIDDERS: The Project Manual and Drawings for the above referenced project are hereby amended as follows:

PROJECT MANUAL

TABLE OF CONTENTS

- a. Page TC-2, Division 10 – Specialties, add “Flagpoles 10350”.

SECTION 04200, UNIT MASONRY

- a. Page 04200-1, after line 28, add the following: “Fireplace Stone & Patio – 13709 Industrial Road Omaha NE 68137 (402) 884-8600 Contact: Dave McCutcheon or”...

SECTION 07421, ALUMINUM METAL PLATE WALL PANELS

- a. Page 07421-03, Delete lines 29-33 in their entirety.  
b. Page 07421-05, after line 25 add the following: “or equal by approved manufacturers.”  
c. Page 07421-05, after line 31 add the following: “2. MetalTech-USA, Phone: (770) 486-8825, contact: Brandon Henrey.”

SECTION 08800, GLASS AND GLAZING

- a. Page 08800-03, Add the following after lines 34: “or equal product by vetrotech or SaftiFIRST.”

SECTION 09999, COLOR SCHEDULE

- a. Page 09999-1, after line 34, add the following: “or #536 Snowdrift by Amcon Block.”  
b. Page 09999-1, after line 35, add the following: “or #536 Snowdrift by Amcon Block.”

SECTION 10350, FLAGPOLES

- a. Add attached section.

**Revisions to Mechanical and Electrical specifications shall be per the attachment from Morrissey Engineering.**

## DRAWINGS

### SHEET C1-4, SITE PLAN

- a. At the General Note 7, add the following at the end of the note: "...prior to start of work."

### SHEET C1-5 REMOVAL PLAN

- a. At the General Note 19, the note should be modified to read, "At the completion of the project, all disturbed, irrigated areas shall receive topsoil and sod. All disturbed, unirrigated, non-paved, non-building areas shall receive topsoil, seeding and matting. All seeding must be completed during the seed window season."

### SHEET C1-7 NORTH ENTRANCE PAVING & UTILITY PLAN

- a. At Paving Keynotes, add the following: "Entrance Paving Clarification: Joints this area shall be hand tooled."

### SHEET A0-0, ARCHITECTURAL NOTES

- a. At Typical Wall Type Schedule: Add the following note to wall types 5.2 PT, 5.3 PT, 7.1 PT, and 7.2 PT. "PT Wall Types shall include Sound Batt and Blanket Insulation."
- b. At Typical Wall Type Schedule: Delete 'Exterior Walls' Column in it's entirety. Replace with "See wall sections for exterior walls."
- c. General Notes: Add the following at the front of note 29: "ALL EXPOSED GYP OUSIDE 90 DEGREE CORNERS AND"...
- d. General Notes: at note 30, delete "reflected ceiling' and after 'locations' add "noted my wall types."
- e. Add General Note 35. "35. At all A6 series sheets, metal stand off's shall be by Doug Mockett Inc. or equal by StandOffs Systems Inc."
- f. Add General Note 36. "36. All box headers and beam pockets shall be insulated with sound or insulation batts."

### SHEET AT1-0, TEMPORARY ADMINISTRATION DEMOLITION/FLOOR PLANS

- a. Replace the Demolition Plan Flag Notes in it's entirety with attached drawing ASD-24.
- b. At Detail 2, Temporary Administration Office Plan
  - 1. Delete empty section reference at west wall of F129.
  - 2. New walls at Nurse 1120C and Cots 1114B are to be wall type 5.2A.
  - 3. Adjacent wall to Door 1120, delete wall type 5.3A and replace with wall type 6. And add the following note: "Reinforce wall with #5' bars at end cells and at mid wall, drill and epoxy with 3" imbed into existing slab on grade. Provide wall type 5.3A above frame.
  - 4. At Architectural Flag Note 1, delete the word "Owner/", coordinate with Architect.
  - 5. At Architectural Flag Note 7 and 8, delete note and replace with "Not Used."

### SHEET AT1-1, TEMPORARY ADMINISTRATION CEILING/FLOOR PLAN

- a. At detail 1, Reflected Ceiling Plan 01 – Temporary Administration Office, Delete section reference mark at west wall of room F129.
- b. Add Floor Plan Area 'C' as shown on ASD-23.

### SHEET AT1-2, TEMPORARY STUDENT ACCESSWAY

- a. Detail 4, Temporary Student Passageway During Construction, add the following clarification at BMU wall: "All frames shall be installed at openings within masonry corridor walls. Protect frames throughout construction."

### SHEET AT1-3, TEMPORARY ADMINISTRATION DOOR SCHEDULE/DETAILS

- a. At Door Schedule, doors 1120A, 1120N.1 add the following remark: "Reuse salvaged door marked K, frame, door, hardware and glazing this location, see plans."
- b. Detail 6, delete frame type B in its entirety this phase.

#### SHEET AD1-1A, DEMOLITION PLAN AREA 'A'- FIRST FLOOR

- a. At Detail 1, Demolition Plan Area 'A'
1. At Corridor C005 add the following note: 'Remove existing terrazzo and subfloor as required for foundation work. Infill with granular fill and slab on grade per structural details.'
  2. At west end of Corridor C005 add flag note 10 to new opening for door C1110B.5.
  3. Add the following to Demolition Plan Flag Notes, number 1 after ...curtain walls, "overhead entry wall, soffits, support columns, foundations, "...
  4. Add the following at the end of Demolition Plan Flag Note number 5: "...This note also applies to door locations shown on A1-1D allowing for new rated openings. See locations at doors/frames: 1602.2, 1602.3, C1620.3, E1607 and frame LL."
  5. Delete Demolition Plan Flag Note number 24 and replace with the following: "24. Remove portions of wall as required for structural bearing pockets typical along this wall. Grout pocket as required to maintain 2-hour fire rating. Coordinate with structural. Protect room finishes."
  6. Add the following note to area north of Room 203B. "Protect ceiling to remain in this area. Coordinate extents with build back plans."

#### SHEET AD1-1B, DEMOLITION PLAN AREA 'B'- (FINAL BUILDOUT)

- a. At Detail 1, Demolition Plan –Classroom Final Buildout - Area 'B' – Phase 4, Delete and replace note at lockers northwest corner of C1130. Replace with the following: "Salvage and reinstall lockers. Move/shift lockers south as required for new cross corridor doors. Extend concrete base as required to match existing, move approximately 2' +/- field verify."

#### SHEET A1-1B, DEMOLITION PLAN AREA 'A'- FIRST FLOOR

- a. At Detail 2, Add notes at southeast entry door:
1. Salvage and Reinstall Main entry door signage and intercom to new location at door C110-A in the New Addition. Patch and repair as required to match adjacent condition.
  2. Contractor to confirm access control device to remain is active and functioning.

#### SHEET S1-0A, FOUNDATION PLAN - AREA A

- a. Lower footing at column CC-6 from T/FTG EL 99'-4" to T/FTG EL 98'-4".
- b. Change continuous footing along column line 28 between column lines A to J (including doorway offsets) to "2'-0"W x 3'-6" D CONT FTG w/ (3) #5 CONT. BARS T&B & #4 TIES @ 48" O.C."
- c. Lower spread footing elevations located at C-28, J-28, C-25, and J-25 to align with bottom of adjoining continuous footing. Provide 2'-0" x 2'-0" pier w/ (8) #6 verticals and #4 ties 6" o.c. poured integral with continuous footing.

#### SHEET S1-3A, ROOF FRAMING PLAN – AREA 'A'

- a. Near section reference 15/S4-2 SIM shown near intersection of column lines T & 30, add label to joist shown on column line 30 "26K5".

#### SHEET S4-3, STRUCTURAL STEEL SECTIONS AND DETAILS

- a. Detail 3: Add 3/16" x 1" long fillet weld both sides for existing joist to new beam connection.

**Revisions to Mechanical and Electrical drawings shall be per the attachment from Morrissey Engineering.**

END OF ADDENDUM

1  
2  
3  
4  
5  
6  
7  
8  
9  
10  
11  
12  
13  
14  
15  
16  
17  
18  
19  
20  
21  
22  
23  
24  
25  
26  
27  
28  
29  
30  
31  
32  
33  
34  
35  
36  
37  
38  
39  
40  
41  
42  
43  
44  
45  
46  
47  
48  
49  
50  
51  
52  
53  
54  
55

SECTION 10350  
FLAGPOLES

A. GENERAL

DESCRIPTION OF WORK

LOCATION of flagpoles are shown on the Drawings.

RELATED WORK SPECIFIED ELSEWHERE

Cast-In-Place Concrete	Section 03 3000
See Civil Drawings	

QUALITY ASSURANCE

MANUFACTURING STANDARDS. Provide flagpoles as complete units produced by a single manufacturer, including fittings, accessories, bases and anchorage devices.

DESIGN CRITERIA. Provide flagpoles and installation constructed to withstand a 90 mph wind velocity minimum when flying 2 flags of 3'-0" by 5'-0" size each, simultaneously. Use heavy pipe sizes if required for flagpole type and height shown.

POLE CONSTRUCTION. Construct poles and ship to site in one piece if possible. If more than one piece is necessary, provide snug-fitting, precision joints with self-aligning, internal splicing sleeve arrangement for weather-tight, hairline field joints.

SUBMITTALS

SHOP DRAWINGS. Submit shop drawings in accord with the General Conditions and Section 01300. Shop drawings shall show foundation, base, lightning protection, and all other items that require dimensions.

DELIVERY, STORAGE AND HANDLING

BEFORE SHIPMENT, the flagpole shall be heavily wrapped with waterproof polyethylene, covered with burlap, wood stripped, and steel banded for protection during transit.

DELIVER FLAGPOLE AND ACCESSORIES completely identified for installation procedure. Handle and store flagpoles to prevent damage or soiling.

B. PRODUCTS

FLAGPOLE

FLAGPOLE shall be cone tapered 6063T6 aluminum alloy flagpole, clear anodized finish, ground set, standard type, one at 35-feet (two section) exposed above ground and two at 25-feet (single section) exposed above ground, with an external halyard and ground sleeve system. Outside butt dimension shall be 7-inches for 35-foot high pole and 6-inches for 25-foot high poles, and outside top diameter 3-1/2-inches. Flagpole shall be manufactured by one of the following or approved equal:

American Flagpole	Base No. 91099, 22-inch diameter
Concord Industries, Inc.	Base No. FC-121, 22-inch diameter
EMC	Base No. FC-11, 22-inch diameter
Michigan Flagpole, Inc.	Equal base

Pole-Tech Company, Inc.

Equal base

FLAGPOLE FITTINGS.

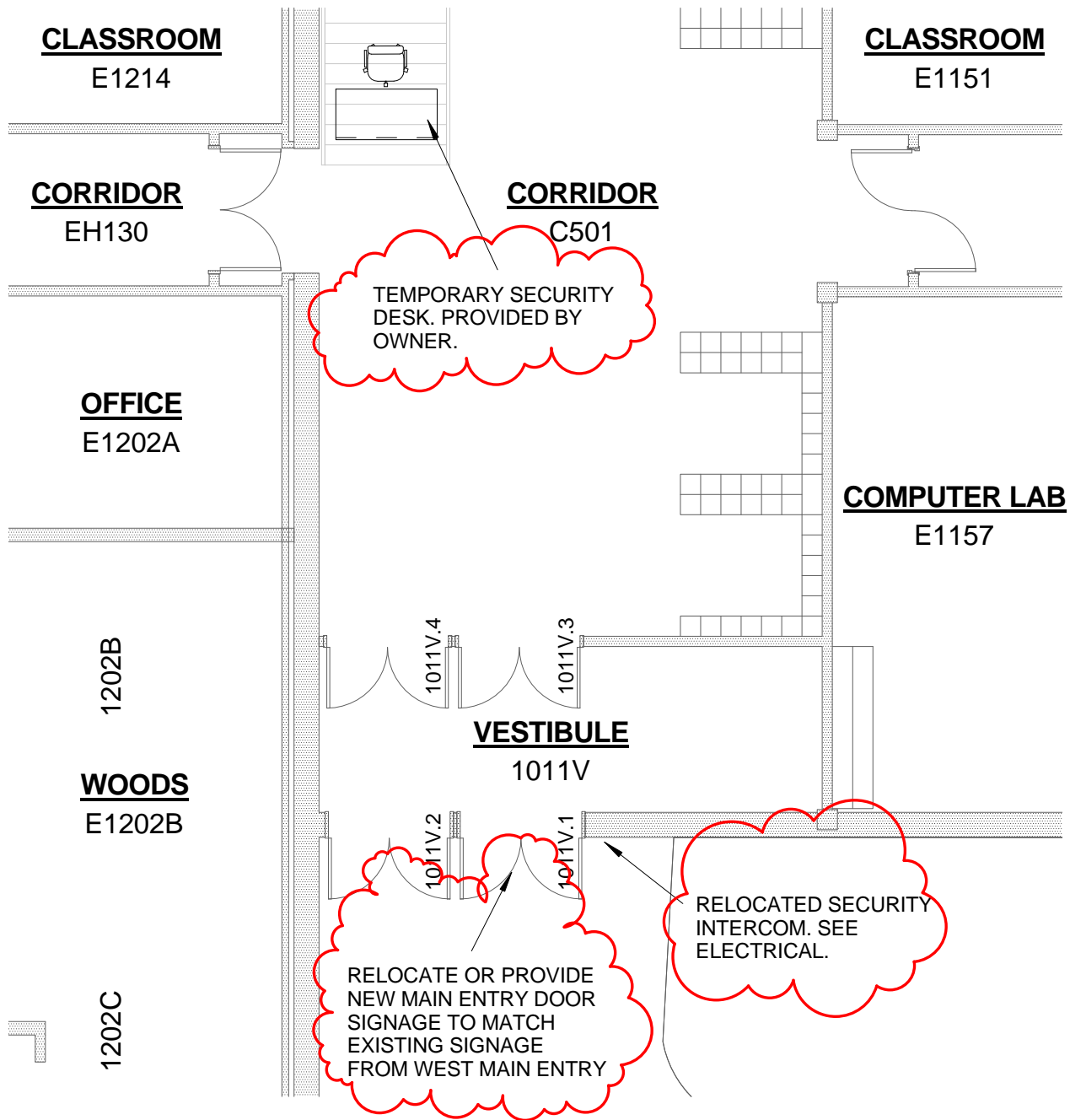
1. Ball shall be 6 to 8-inches in diameter, constructed of 14-gauge seamless spun aluminum, mounted on a 1/2-inch to 3/4-inch dural rod attached to truck.
2. Truck shall be standard ballbearing weatherproof nonfouling truck, with aluminum body revolving on aluminum spindle. Truck shall have two 2-2/3-inch diameter or larger nylon-brushed aluminum sheaves rotating on dural or stainless steel arbors.
3. Halyards shall be two 1/8 " stainless steel aircraft stable halyards, 2 black neoprene covered stainless steel snaps per halyard for securing to 2 flags.
4. Metal Base shall be of cast aluminum, with a recess in top for caulking to flagpole after erection, No. 91099 by American Flagpole or equal by the other manufacturers listed.
5. Cleats shall be two 9-inch cast aluminum cleats, each attached to pole with two 5/8-inch flat head dural machine screws.
6. Two cleat covers shall be cast aluminum concealed hinge and cylinder lock cleat covers capable of receiving cylinder and keys specified in Section 08710. Key locks the same and provide 2 keys for each lock.
7. Finish of all fittings shall be clear anodized to match flagpole.

C. EXECUTION

ERECTION

FLAGPOLE shall be erected and set in a concrete footing and foundation sleeve in accord with the manufacturer's instructions.

END OF SECTION



4 FLOOR PLAN 01 - SOUTH ENTRY AREA 'C'  
1/8" = 1'-0"



MILLARD NORTH HIGH SCHOOL  
CONNECTOR ADDITION

Omaha, NE 68137

3029-24	DRAWING REFERENCED: AT1-1	ATTACHMENT
1/21/2015 4:06:26 PM	SOUTH ENTRY AREA 'C'	ASD-23

## DEMOLITION PLAN FLAG NOTES

### FLAG NOTES APPLY TO DETAIL 1 ON SHEET AT1-0 ONLY

- 1 PROTECT CASEWORK TO REMAIN.
- 2 REMOVE PORTION OF WALL SHOWN BOLD AND DASHED AS REQUIRED FOR NEW PLANS. PATCH AND REPAIR SURROUNDING CONSTRUCTION AS REQUIRED FOR NEW CONSTRUCTION.
- 3 REMOVE CEILING IN ITS ENTIRETY.
- 4 REMOVE FLOORING AND BASE IN ITS ENTIRETY. PROTECT WALLS TO REMAIN.
- 5 REMOVE EXISTING CEILING CONSTRUCTION AS REQUIRED TO ACCOMMODATE NEW PLANS. PATCH AND REPAIR AS REQUIRED. INSTALL SALVAGED TILES TO MATCH EXISTING.
- 6 PROTECT FLOORING TO REMAIN.
- 7 REMOVE EXISTING CASEWORK SHOWN BOLD AND DASHED IN ITS ENTIRETY.
- 8 PROTECT CEILING TO REMAIN IN THIS AREA.
- 9 REMOVE CMU TO BOTTOM OF SECOND FLOOR STRUCTURE.
- 10 REMOVE TACKBOARD IN ITS ENTIRETY.
- 11 REMOVE BROCHURE DISPLAY IN ITS ENTIRETY.
- 12 NOT USED.
- 13 NOT USED.
- 14 NOT USED.
- 15 NOT USED.
- 16 RELOCATE CASEWORK PER OWNER DIRECTION TO TEMPORARY GUIDANCE OFFICE.



### MILLARD NORTH HIGH SCHOOL CONNECTOR ADDITION

Omaha, NE 68137

3029-24

DRAWING REFERENCED: AT1-0

ATTACHMENT

1/21/2015 3:24:13 PM

ASD-24

## addendum

---

**addendum no.** 3

**date:** January 21, 2015

**bid date:** January 27, 2015

**project name:** Millard North High School – Connector addition

**project no:** 14031

---

This addendum is hereby made a part of the contract documents to the same extent as if it were originally included therein. Contract documents shall be considered modified or revised as hereinafter described.

### ***mechanical items***

1. Sheet M1-0a – MECHANICAL PLAN - GENERATOR
  - a. Change MUD contact for the natural gas meter coordination to Tom Miller at 402-504-7938. See sketch M1-0a.
2. Sheet M1-1 – 1ST FLOOR HVAC PLAN 1
  - a. Remove and install existing grilles and diffusers in new ceiling. See sketch M1-1a.
3. Sheet M1-1A – MECHANICAL PLAN - 1ST FLOOR AREA 'A'
  - a. Add return air grille type G-5, change D-1 diffuser to sidewall mounted R-1. See sketch M1-1Aa.
4. Sheet M3-1A – PLUMBING PLAN - 1ST FLOOR AREA 'A'
  - a. Connect new BFS-1 to existing plumbing, see sketch M3-1Aa.
  - b. Adjust location of storm drains, see sketch M3-1Aa.
5. Sheet M7-2 - MECHANICAL SCHEDULES
  - a. Add grille type G-5. See sketch M7-2a.

### ***electrical items***

#### **specification items**

1. Section 263213 – Packaged Engine Generators
  - a. Page 4, Line 17, Add “4. Generac”

#### **drawing items**

6. Sheet E1-1A – Floor Plan – 1<sup>st</sup> Floor - Area 'A' - Lighting
  - a. Add Type 49 sconce fixture in Hallway C1110 to columns. See sketch E1-1Aa and E1-1Ab.
7. Sheet E1-2A – Floor Plan – 2<sup>nd</sup> Floor - Area 'A' - Lighting
  - a. Delete Type 46 fixture in metal ceiling panel. Add Type 13 fixture in metal ceiling panel. Add cove lighting in gyp ceiling cove. See sketch E1-2Aa and E1-2Ab.
8. Sheet E2-1A – Floor Plan – 1<sup>st</sup> Floor - Area 'A' – Power
  - a. Provide receptacle for water bottle fill station in gym.
9. Sheet E3-2A – Floor Plan – 2<sup>nd</sup> Floor – Area 'A' – Special Systems

- a. Lecture Hall / Testing Center 2000A – Provide two (2) intercom system speakers spaced evenly in room and a volume control located adjacent to the A/V touch screen.
  - b. Lecture Hall / Testing Center 2000
    - i. Provide two (2) intercom system speakers spaced evenly in room and a volume control located adjacent to the A/V touch screen.
    - ii. Speaker on Construction documents with no label is S-1 type.
  - c. Lecture Hall / Testing Center 2000B – Provide two (2) intercom system speakers spaced evenly in room and a volume control located adjacent to the A/V touch screen.
10. Sheet E5-1 – Electrical Schedules
- a. Fixture type 25 shall be considered equal by Prudential and Winona.
  - b. Fixture type 26 shall be considered equal by Prudential and Winona.
  - c. Fixture type 27 shall be considered equal by Prudential and Winona.
  - d. Fixture type 42 shall be considered equal by Insight.
  - e. Fixture type 49 interior fixture shall be considered equal by Insight. Shroud shall be by Lumos as specified.
  - f. Fixture type 51 shall be considered equal by Acolyte.
  - g. Fixture type 56 shall be considered equal by Amerlux.
  - h. Fixture type 57 shall be considered equal by Amerlux.
11. Sheet E5-2 – Electrical Schedules
- a. Provide GFCI receptacle for new water bottle fill station.

***end of addendum***

5

EXISTING 2 PSIG NATURAL GAS SERVICE. EXISTING CONNECTED LOAD APPROXIMATELY 1,066 CFH. ADDITIONAL CONNECTED LOAD BY PROJECT APPROXIMATELY 660 CFH. CONTACT TOM MILLER AT 402-504-7938 TO COORDINATE ALL WORK ASSOCIATED WITH NATURAL GAS SERVICE.



mechanical | electrical | lighting | technology | commissioning

4940 North 118th Street  
Omaha, NE 68164

P: 402.491.4144

[www.morrisseyengineering.com](http://www.morrisseyengineering.com)

## Millard North High School Connector Addition Omaha, NE

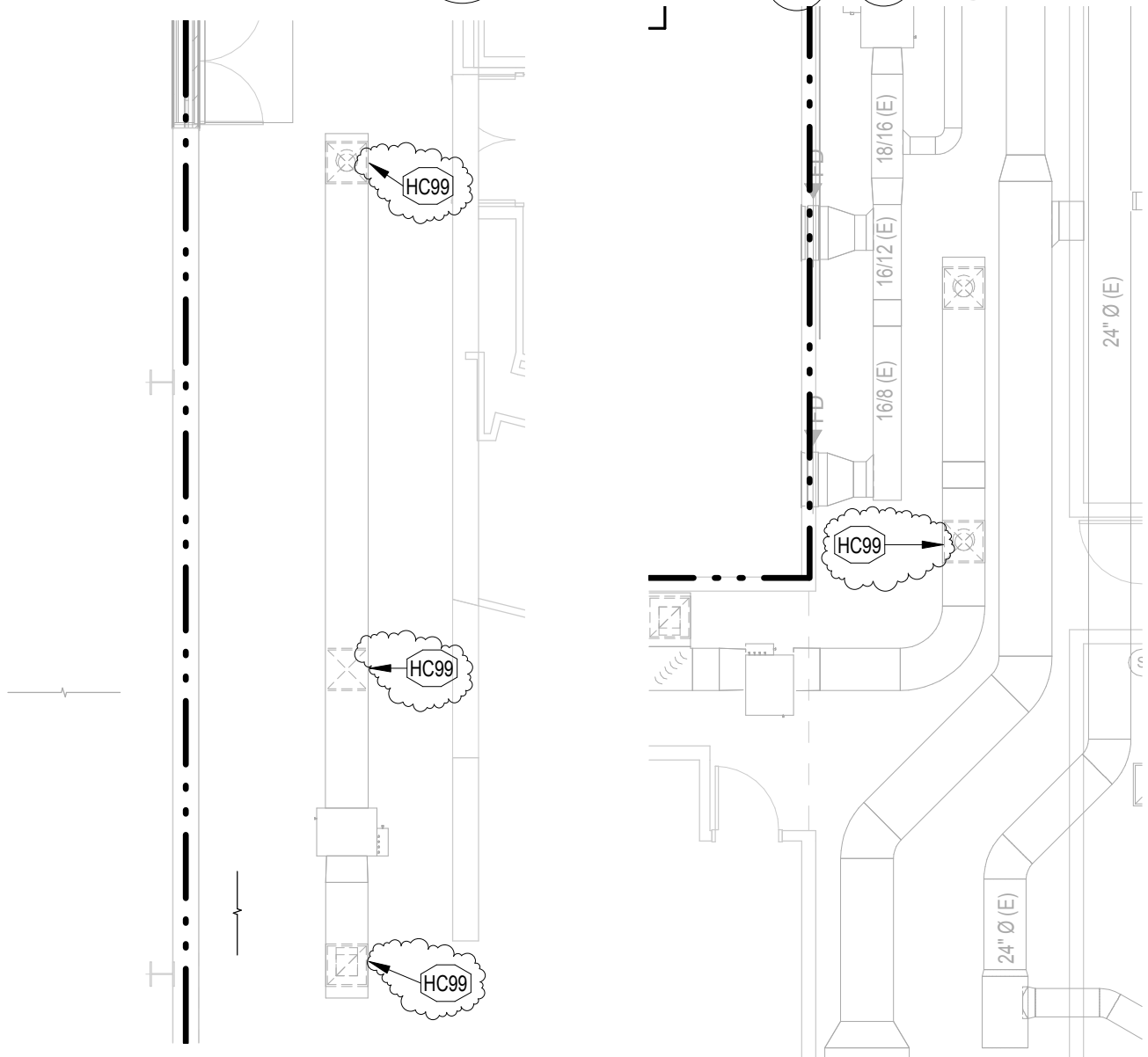
project no.:	14031	drawing referenced:	M1-0
date:	01/21/15	addendum no.:	3

sketch

M1-0a

## KEYNOTES

HC99 REMOVE DIFFUSER/GRILLE FROM EXISTING CEILING AND RELOCATE IN NEW CEILING. COORDINATE EXACT LOCATION WITH NEW CEILING GRID AND LIGHTS. ADJUST DUCTWORK AS REQUIRED FOR NEW LOCATION.



**morrissey  
engineering inc**

mechanical | electrical | technology | commissioning

4940 North 118th Street  
Omaha, NE 68164  
P: 402.491.4144

www.morrisseyengineering.com

## Millard North High School Connector Addition Omaha, NE

project no.: 14031

drawing referenced:

M1-1

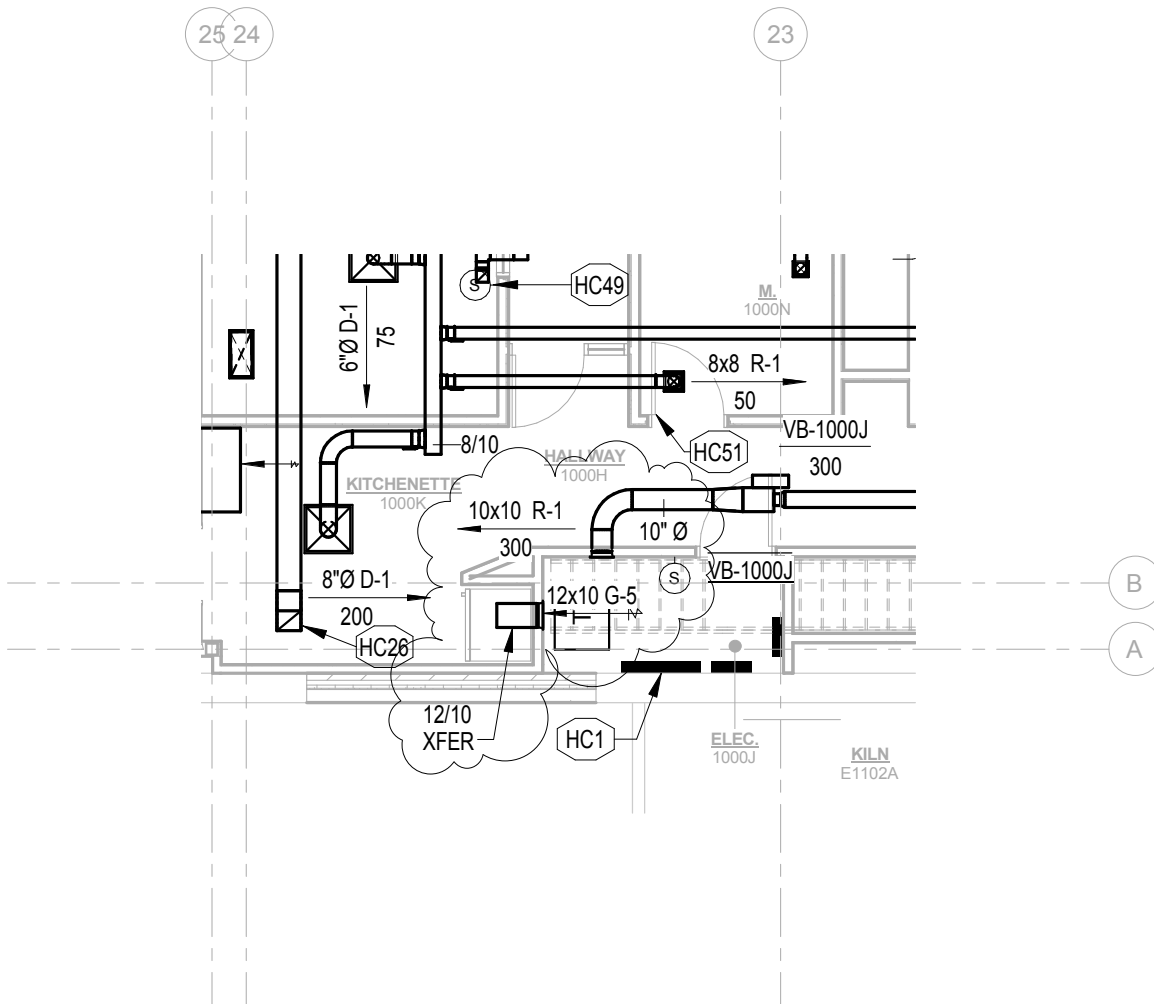
date: 01/21/15

addendum

3

sketch

.M1-1a



**morrissey  
engineering inc**

mechanical | electrical | technology | commissioning

4940 North 118th Street  
Omaha, NE 68164  
P: 402.491.4144

www.morrisseyengineering.com

## Millard North High School Connector Addition Omaha, NE

project no.: 14031

drawing referenced:

M1-1A

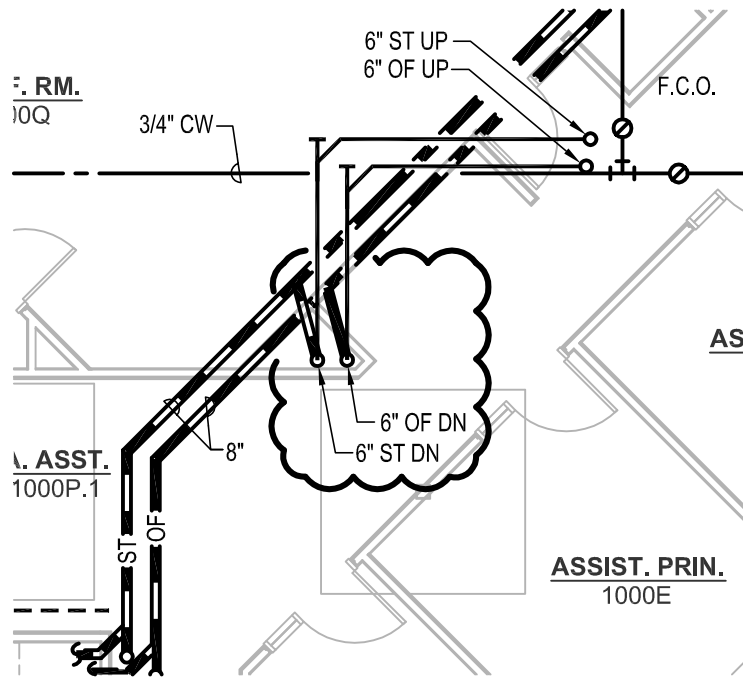
date: 01/21/15

addendum

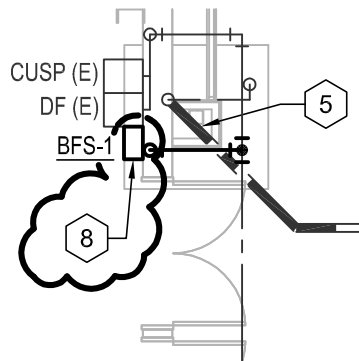
3

sketch

**M1-1Aa**



8 PROVIDE NEW WATER BOTTLE FILLING STATION NEXT TO EXISTING DRINKING FOUNTAIN. EXISTING DRINKING FOUNTAIN WILL NEED TO BE REMOVED TO FACILITATE INSTALLATION. ROUTE NEW CW AND WASTE THROUGH WALL AND CONNECT TO EXISTING PLUMBING.



mechanical | electrical | lighting | technology | commissioning

4940 North 118th Street  
Omaha, NE 68164

P: 402.491.4144

www.morrisseyengineering.com

## Millard North High School Connector Addition Omaha, NE

project no.: 14031

drawing referenced:

M3-1A

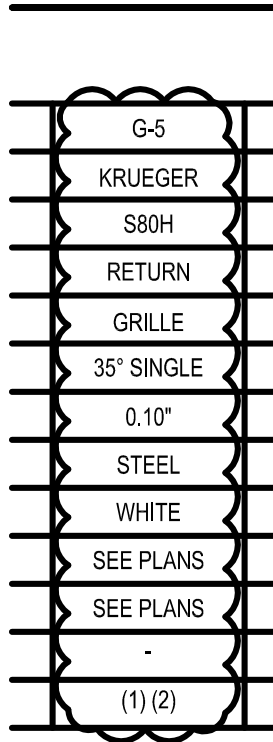
date: 01/21/15

addendum no.:

3

sketch

# M3-1Aa



4940 North 118th Street  
Omaha, NE 68164

P: 402.491.4144

[www.morrisseyengineering.com](http://www.morrisseyengineering.com)

## Millard North High School Connector Addition Omaha, NE

project no.: 14031

drawing referenced: M7-2

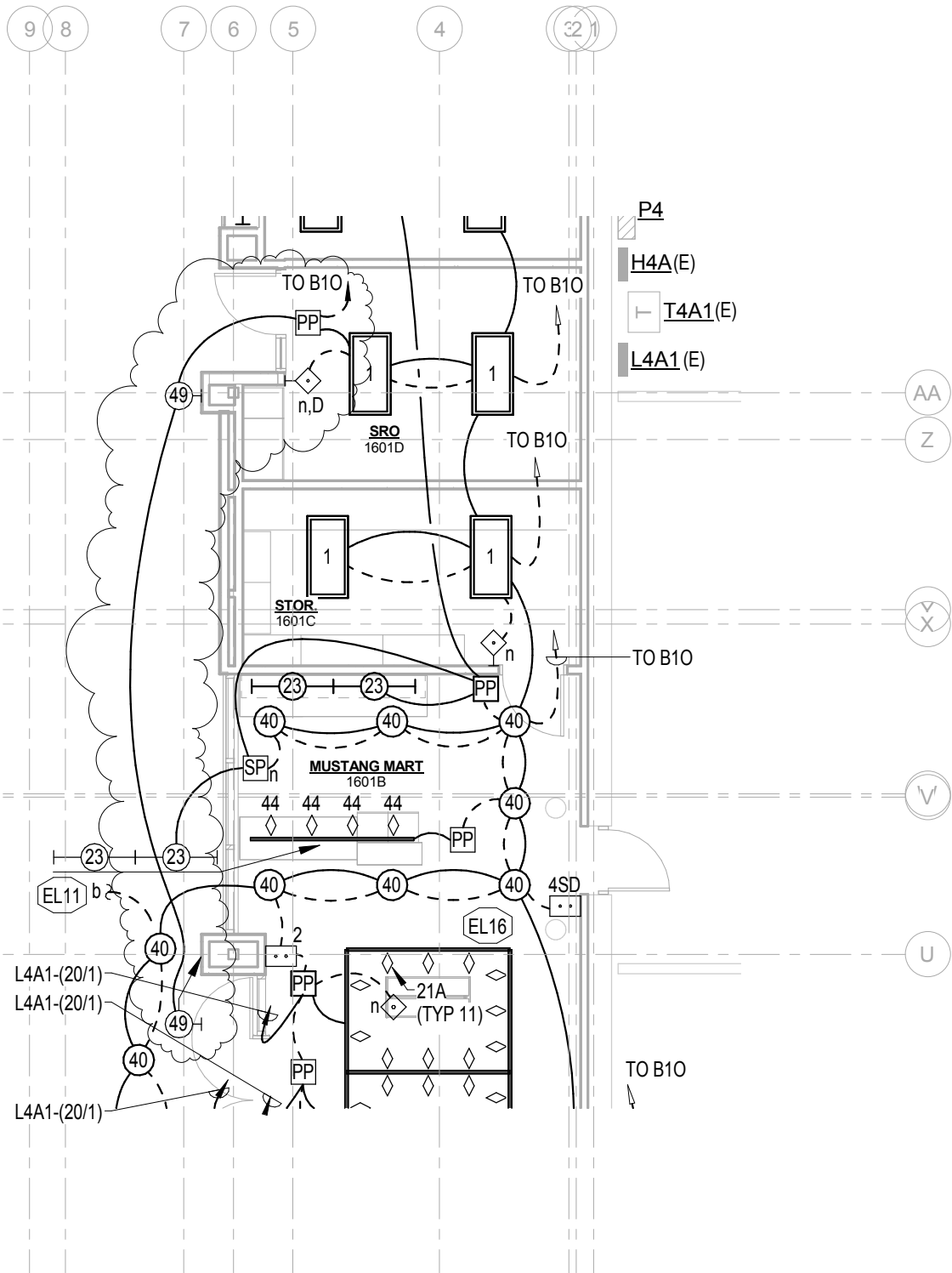
date: 01/21/15

addendum no.: 3

sketch

# M7-2a





**morrissey  
engineering inc**

mechanical | electrical | technology | commissioning

4940 North 118th Street  
Omaha, NE 68164  
P: 402.491.4144

www.morrisseyengineering.com

## Millard North High School Connector Addition Omaha, NE

project no.: 14031

drawing referenced:

E1-1A

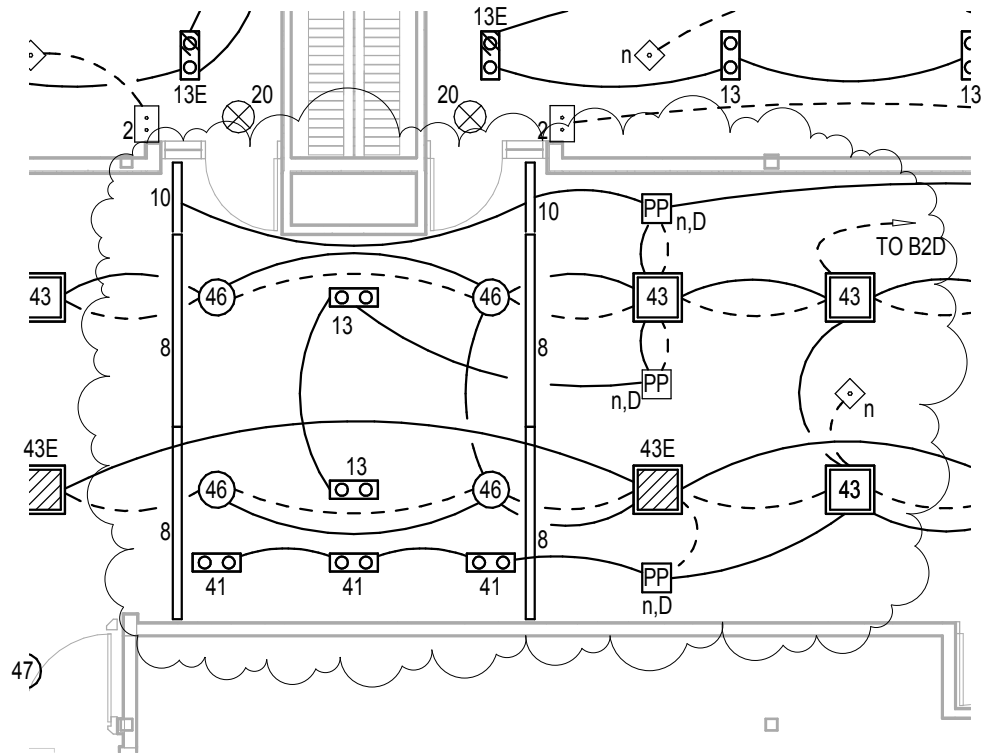
date: 01/21/2015

addendum:

3

sketch

**E1-1Ab**



**morrissey  
engineering inc**

mechanical | electrical | technology | commissioning

4940 North 118th Street  
Omaha, NE 68164  
P: 402.491.4144

www.morrisseyengineering.com

## Millard North High School Connector Addition Omaha, NE

project no.: 14031

drawing referenced:

E1-2A

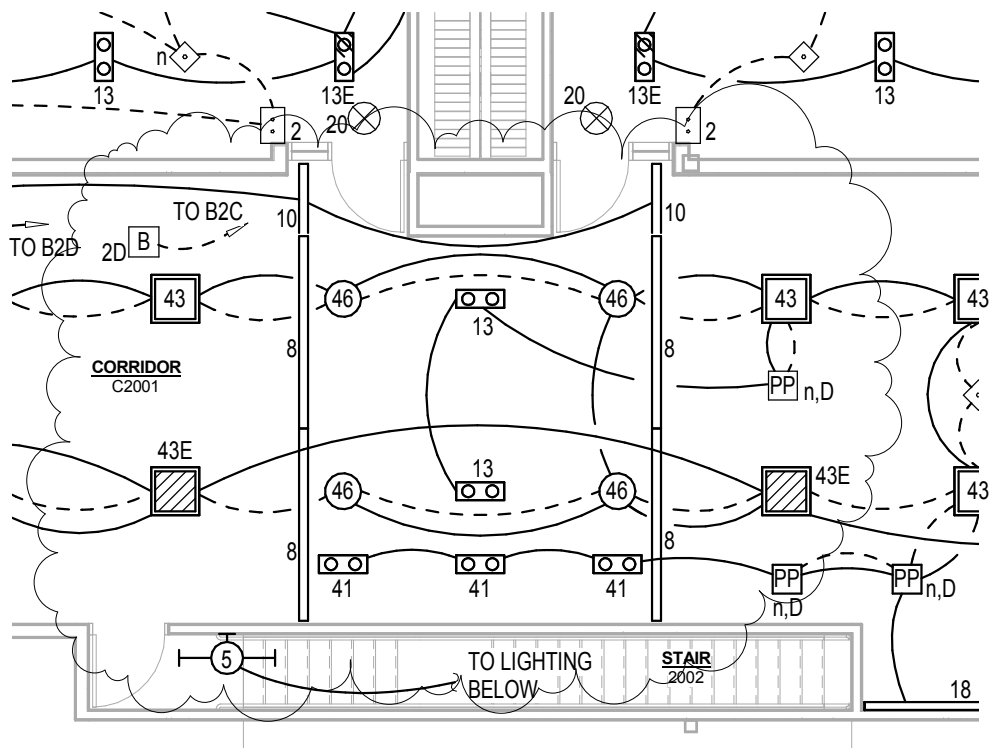
date: 01/21/2015

addendum:

2

sketch

**E1-2Aa**



**morrissey  
engineering inc**

mechanical | electrical | technology | commissioning

4940 North 118th Street  
Omaha, NE 68164  
P: 402.491.4144

www.morrisseyengineering.com

## Millard North High School Connector Addition Omaha, NE

project no.: 14031

drawing referenced:

E1-2A

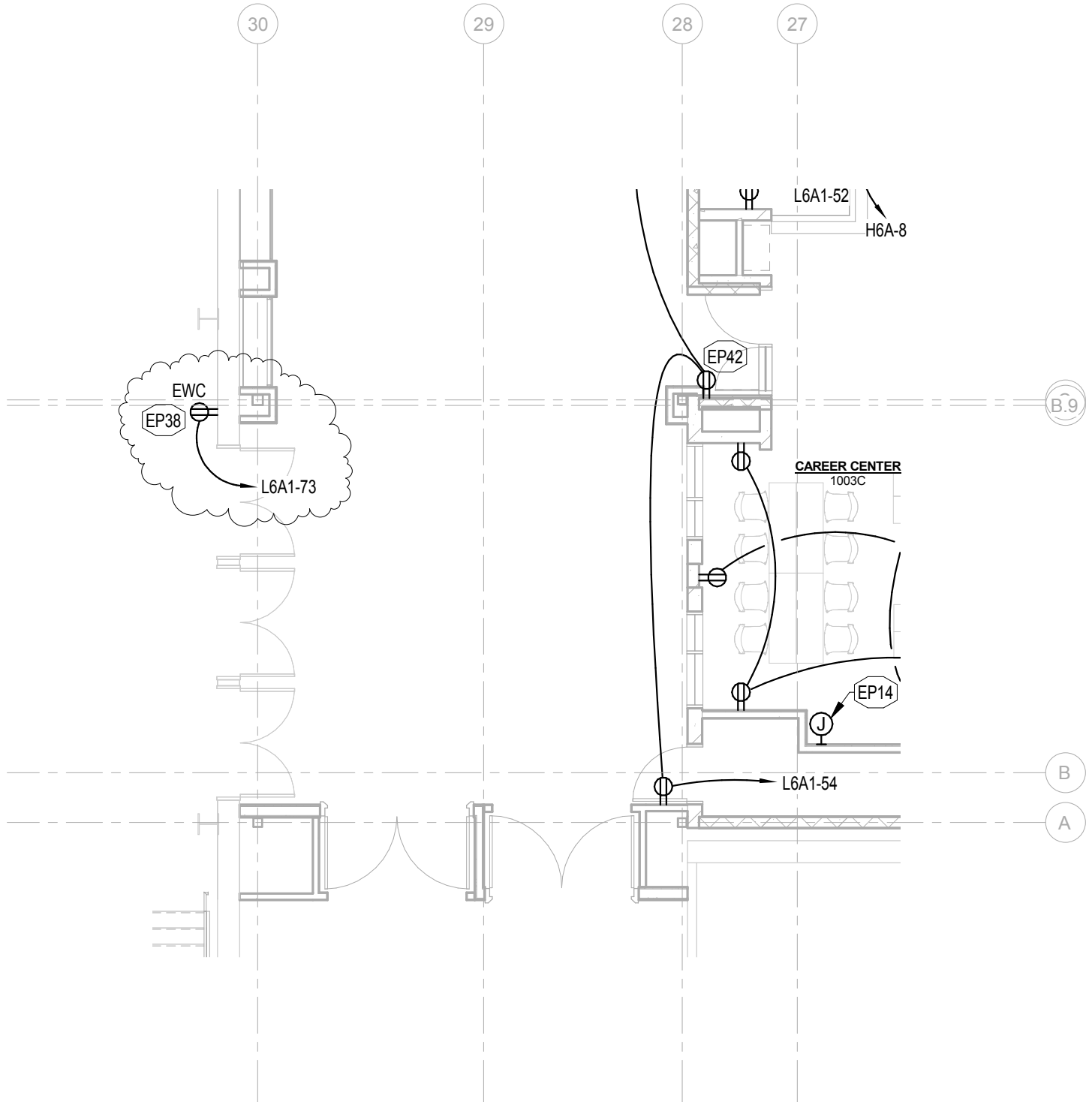
date: 01/21/2015

addendum:

3

sketch

**E1-2Ab**



**morrissey**  
**engineering inc**

mechanical | electrical | technology | commissioning

4940 North 118th Street  
Omaha, NE 68164  
P: 402.491.4144

www.morrisseyengineering.com

## Millard North High School Connector Addition Omaha, NE

project no.: 14031

drawing referenced:

E2-1A

date: 01/21/2015

addendum:

3

sketch

**E2-1Aa**

# Lighting Panel Schedule

**Panel:** L6A1  
**Rating:** 225 A  
**Mounting:** SURFACE  
**Type:** MCB W/ FEED THRU  
 LUGS AND GND. BAR  
**Voltage:** 120/208 Wye  
**Phase:** 3  
**Wire:** 4  
**A.I.C. Rating:** SERIES

## W/ INTEGRAL SPD

Circuit Description	O/C	CKT	A	B	C	CKT	O/C	Circuit Description
REFRIGERATOR	20	1	1	...		2	1	REC - KITCHENETTE
REC - ELEC,CORR,STOR	20	1	3	...		4	1	MICROWAVE
*REC - WATERCOOLER	20	1	5	...		6	1	REC - AREA 'A'
REC - ADMIN ASSIST	20	1	7	...		8	1	REC - PRINCIPAL
REC - ASSIST PRINCIPAL	20	1	9	...		10	1	REC - ASSIST PRINCIPAL
REC - ASSIST PRINCIPAL	20	1	11	...		12	1	REC - ASSIST PRINCIPAL
REC - SECURITY	20	1	13	...		14	1	REC - AREA 'A'
REC - COUNSELOR	20	1	15	...		16	1	REC - COUNSLOR
REC - COUNSELOR	20	1	17	...		18	1	REC - COUNSELOR
REC - COUNSELOR	20	1	19	...		20	1	REC - COUNSELOR
REC - COUNSELOR	20	1	21	...		22	1	REC - SOCIAL WORKER
REC - TOIL,MEN,WOM.	20	1	23	...		24	1	REC - ADMIN OFFICE
REC - CONFERENCE	20	1	25	...		26	1	REC - ADMIN OFFICE
REC - CONFERENCE	20	1	27	...		28	1	REC - ADMIN OFFICE
REC - CONFERENCE	20	1	29	...		30	1	REC - ADMIN OFFICE
REC - CONFERENCE	20	1	31	...		32	1	REC - BOOKKEEPER
REC - COTS	20	1	33	...		34	1	REC - ATHLETIC DIRECTOR
REC - HEALTH	20	1	35	...		36	1	*REC - VENDING
REC - NURSE	20	1	37	...		38	1	*REC - VENDING
REC - HEALTH	20	1	39	...		40	1	*REC - VENDING
REC - HEALTH REFRIG	20	1	41	...		42	1	REC - TOIL, TRNQ, STAFF
REC - STAFF LOUNG REFRIG	20	1	43	...		44	1	REC - TRNQ REFRIG
REC - STAFF LOUNGE	20	1	45	...		46	1	REC - STAFF LOUNGE
REC - STAFF LOUNGE	20	1	47	...		48	1	REC - STAFF LOUNGE
REC - MICROWAVE	20	1	49	...		50	1	REC - ADMIN ASSIST
REC - MICROWAVE	20	1	51	...		52	1	REC - ADMIN ASSIST
FLRBOX - CAREER CENTER...	20	1	53	...		54	1	REC - CORRIDOR
REC - DISPOSAL	20	1	55	...		56	1	LTG - DISPLAY CASE
OPERABLE PARTITION CONF	20	1	57	...		58	1	OPERABLE PARTITION CONF.
REC - STAFF LOUNGE	20	1	59	...		60	1	REC - PRINTER
REC - PRINTER	20	1	61	...		62	1	REC - SHREDDER
REC - EXTERIOR	20	1	63	...		64	1	REC - DISPOSAL
DISHWASHER	20	1	65	...		66	1	DISHWASHER
REC - CAREER CENTER	20	1	67	...		68	1	REC - SECURITY
REC - CAREER CENTER	20	1	69	...		70	1	REC - ADMIN ASSIST
REC - CAREER CENTER	20	1	71	...		72	1	REC - ADMIN OFFICE
*REC - WATER BOTTLE FILL	20	1	73	...		74	1	SPARE
SPARE	20	1	75	...		76	1	SPARE
SPARE	20	1	77	...		78	1	SPARE
SPARE	20	1	79	...		80	1	SPARE
SPACE	--	--	81	...		82	--	SPACE
SPACE	--	--	83	...		84	--	SPACE

\* = PROVIDE GFCI BREAKER



4940 North 118th Street  
 Omaha, NE 68164  
 P: 402.491.4144

www.morrisseyengineering.com

## Millard North High School Connector Addition Omaha, NE

project no.: 14031

drawing referenced:

E5-2

date: 01/21/2015

addendum:

3

sketch

E5-2a