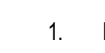


GENERAL NOTES:

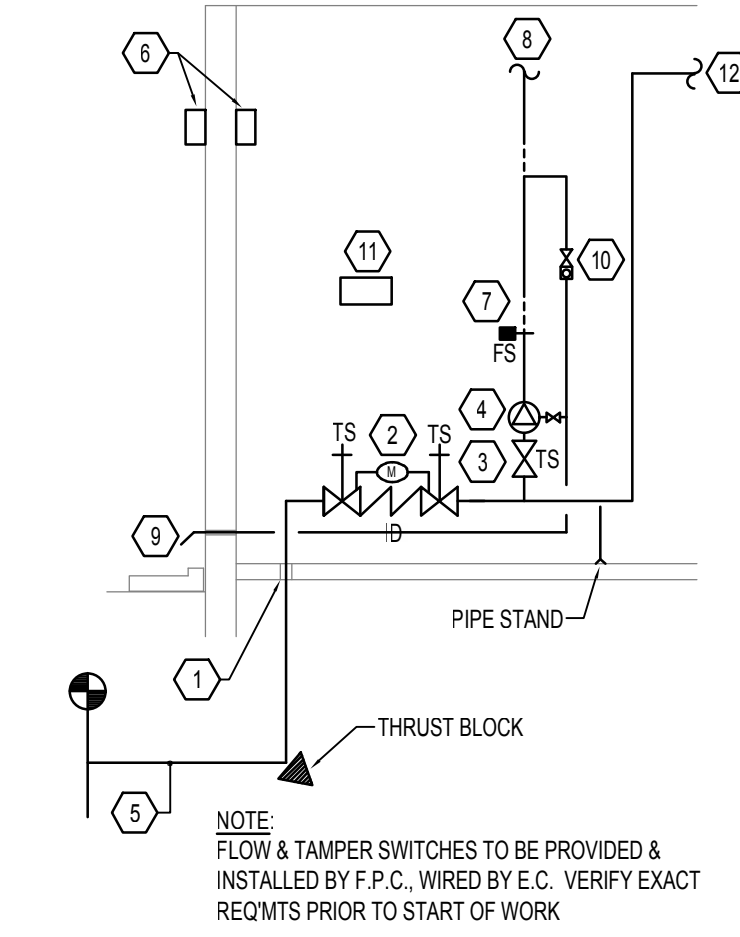
- ROOMS OR AREAS SHOWN SHADED ON THIS PLAN, WITH THE FOLLOWING SHADING TYPE  ARE DEDICATED FOR A SPECIFIC USE. EXAMPLES INCLUDE ELECTRICAL ROOMS, TECHNOLOGY/DATA CLOSETS, EXIT STAIRWELLS, AND ELEVATOR EQUIPMENT ROOMS. UNDER NO CIRCUMSTANCES SHALL PIPING, DUCTWORK, OR EQUIPMENT BE INSTALLED IN OR ROUTED THROUGH THESE ROOMS OR AREAS EXCEPT FOR BRANCH PIPING OR DUCTWORK SPECIFICALLY SERVING THE ROOM OR AREA. DEDICATED SPACE SHALL EXTEND VERTICALLY FROM FLOOR TO STRUCTURAL CEILING.
- THESE DRAWINGS ARE DIAGRAMMATIC AND INDICATE THE GENERAL EXTENT OF WORK. THE CONTRACTOR SHALL BE RESPONSIBLE FOR THE COORDINATION AND PROPER INSTALLATION OF ALL FIRE PROTECTION SYSTEMS.
- THE CONTRACTOR SHALL PROVIDE ALL MISCELLANEOUS SUPPORTING STEEL ETC. FOR THE PROPER INSTALLATION OF ALL FIRE PROTECTION SYSTEMS.
- THE CONTRACTOR SHALL COORDINATE FLOOR, WALL AND ROOF PENETRATIONS WITH THE GENERAL TRADES CONTRACTOR.
- PIPING SHALL NOT BE LOCATED OVER THE TOP OF ANY ELECTRICAL PANELS OR EQUIPMENT.
- THE CONTRACTOR SHALL COORDINATE THE LOCATION OF SPRINKLER HEADS WITH THE ARCHITECTURAL REFLECTED CEILING PLANS. ALL SPRINKLER HEADS ARE TO BE LOCATED IN THE CENTER OF CEILING TILES IN LAY-IN AREAS UNLESS OTHERWISE INDICATED.
- PROVIDE GUARDS FOR SPRINKLERS IN STORAGE AREAS.
- SPRINKLER HEADS AND PIPES ARE SHOWN FOR COORDINATION ONLY. A REGISTERED SPRINKLER CONTRACTOR SHALL BE RESPONSIBLE FOR FINAL DESIGN AND INSTALLATION OF COMPLETE SPRINKLER SYSTEM ALL IN ACCORDANCE WITH NFPA-13, LOCAL FIRE PREVENTION AUTHORITY AND ALL LOCAL CODE REQUIREMENTS.
- FIRE PROTECTION CONTRACTOR SHALL VERIFY EXACT LOCATION OF ALL OBSTRUCTIONS INCLUDING: PIPING, STRUCTURAL STEEL, CONDUIT, DUCTWORK, EQUIPMENT AND MISCELLANEOUS ITEMS BEFORE INSTALLATION OF SPRINKLER SYSTEM TO AVOID INTERFERENCES.
- FABRICATION, ERECTION AND TESTING OF ALL PIPING SYSTEMS SHALL BE IN ACCORDANCE WITH OWNERS' GENERAL REQUIREMENTS, N.F.P.A. #13 & #24 AND LOCAL CODE & AUTHORITIES.
- FIRE PROTECTION CONTRACTOR SHALL MAKE ALL DRAWINGS, SUBMITTALS, TEST CERTIFICATE SUBMITTALS AND PAY ALL REQUIRED FEES TO THE OWNERS INSURING AGENT AND LOCAL AUTHORITIES FOR REQUIRED PERMITS.
- ALL SYSTEMS SHALL BE CHARGED AND OPERATIONAL WHEN THE CONTRACTOR IS NOT ON THE PREMISES.
- FIRE SPRINKLER SYSTEM TO PROVIDE COVERAGE BELOW CEILING IN ALL AREAS PER THE STATE AND LOCAL FIRE MARSHALL.
- CONTRACTOR TO PROVIDE SHOP DRAWINGS AND CALCULATIONS FOR BUILDING DEPARTMENT APPROVAL PRIOR TO INSTALLATION OF SPRINKLER SYSTEM. FIRE SPRINKLER SYSTEM TO MEET REQUIREMENTS OF LANDLORD, NFPA 13, THE STATE AND LOCAL FIRE MARSHALL OR WHICHEVER IS MORE STRINGENT. REFER TO SPECIFICATION SECTION 15300 ON SHEET M-500 FOR FURTHER INFORMATION. SUBMIT SPRINKLER DESIGN TO LANDLORD'S INSURER AND H&M FOR APPROVAL.
- FIRE PROTECTION PLANS (SPRINKLER DRAWINGS) MUST BE ENGINEERED AND WET SEALED BY A LANDLORD APPROVED, LICENSED REGISTERED FIRE PROTECTION CONTRACTOR IN THE LOCAL JURISDICTION.
- REFER TO REFLECTED CEILING PLAN TO LOCATE SPRINKLER HEADS.
- CONTRACTOR IS RESPONSIBLE TO DRAIN AND REFILL BUILDING SYSTEMS EACH DAY DURING ITS WORK.
- FACTORY PAINT CONCEALED SPRINKLER HEAD COVER PLATES TO MATCH CEILING COLOR.
- REFER TO SECTION 15300 ON DWG M500 FOR FIRE PROTECTION SPECS.

FIRE SPRINKLER SYSTEM:

- ALL PIPE, FITTINGS, VALVES, HANGER MATERIAL, ALARM DEVICES, AND SPRINKLER DEVICES SHALL BE INSTALLED PER NFPA 13 AND LOCAL CODE REQUIREMENTS.
- TESTING OF THE SPRINKLER SYSTEM SHALL CONFORM WITH NFPA 13 REQUIREMENTS.
- ALL PIPE 2" AND SMALLER SHALL BE SCHEDULE 40 WITH SCREWED CAST IRON FITTINGS.
- ALL PIPE 2 1/2" AND LARGER SHALL BE SCHEDULE 10 WITH GROOVED FITTINGS AND RIGID COUPLINGS.
- ALARMS SHALL BE INSTALLED PER LOCAL CODE REQUIREMENTS
- FIRE CAULK ALL PENETRATIONS THROUGH FIRE RATED ASSEMBLIES
- SPRINKLER RISER ASSEMBLY TO BE LOCATED ON SOUTHEAST WALL OF SHIPPING ROOM 140. ASSEMBLY TO INCLUDE BACKFLOW PREVENTER AND WET RISER TO FEED BUILDING.
- NO HIGH PILED STORAGE - ALL STORAGE TO BE UNDER 12'-0"

FIRE PROTECTION RISER CODED NOTES:


- SLEEVE AND SEAL THROUGH FLOOR
- DOUBLE CHECK DETECTOR ASSEMBLY BACKFLOW PREVENTER WITH TAMPER SWITCH ON SHUT OFF VALVES
- CONTROL VALVE WITH TAMPER SWITCH
- UL LISTED ALARM CHECK VALVE
- INCOMING FIRE PROTECTION WATER SUPPLY. FIRE PROTECTION WATER SERVICE SIZE TO BE DETERMINED BY FIRE PROTECTION CONTRACTOR BY HYDRAULIC CALCULATIONS PRIOR TO START OF WORK. SEE CIVIL PLANS FOR CONTINUATION.
- INTERIOR AND EXTERIOR BELL (WIRED BY ELECTRICAL)
- FLOW SWITCH WIRED BY E.C.
- TO FIRE PROTECTION WET SYSTEM
- SYSTEM DRAIN PIPED THROUGH EXTERIOR WALL AND TURNED DOWN 45° TO SPLASH BLOCK
- TEST & DRAIN VALVE WITH SIGHT GLASS. SIGN INDICATING FIRE INSPECTORS TEST SHALL BE PROVIDED AND DROPS PAINTED RED.
- SPARE SPRINKLER HEAD CABINET w/ SPRINKLER HEAD WRENCH. SUPPLIED PER NFPA 13 6.2.9.
- TO FIRE DEPARTMENT CONNECTION. TYPE AND LOCATION TO BE APPROVED BY LOCAL FIRE DEPARTMENT.

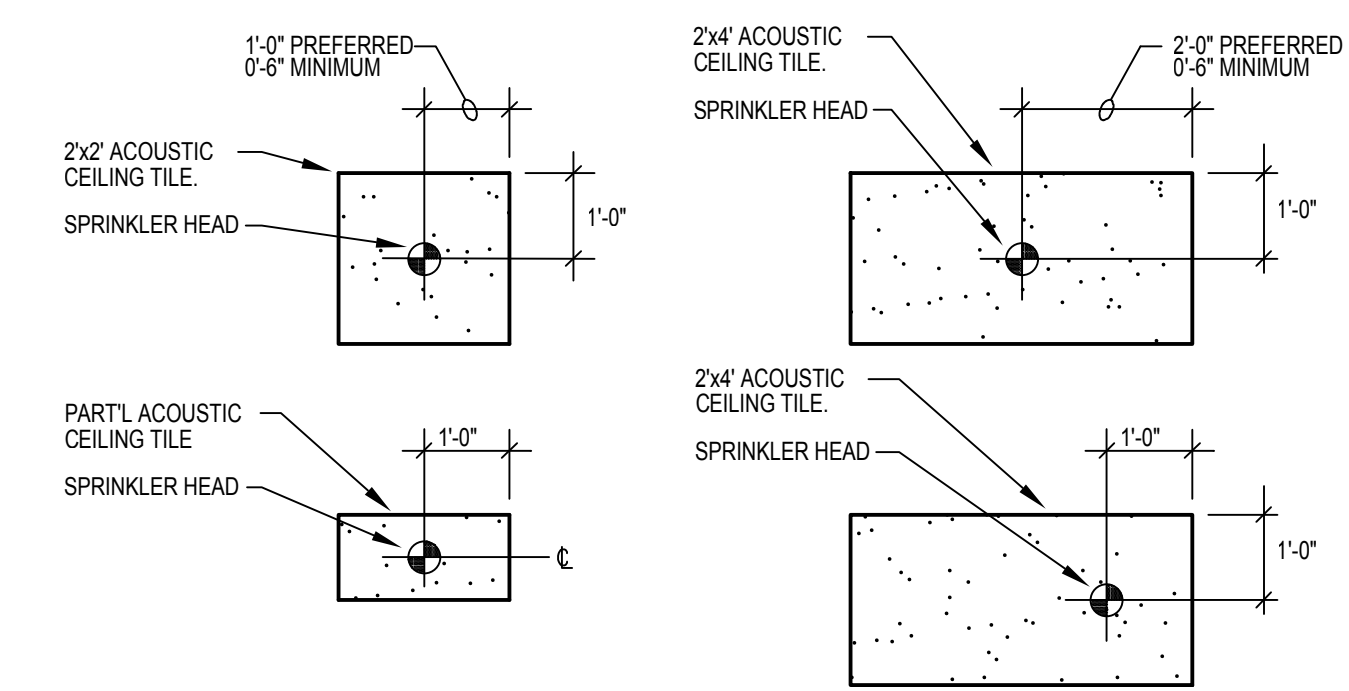


FIRE PROTECTION RISER DETAIL
N.T.S.

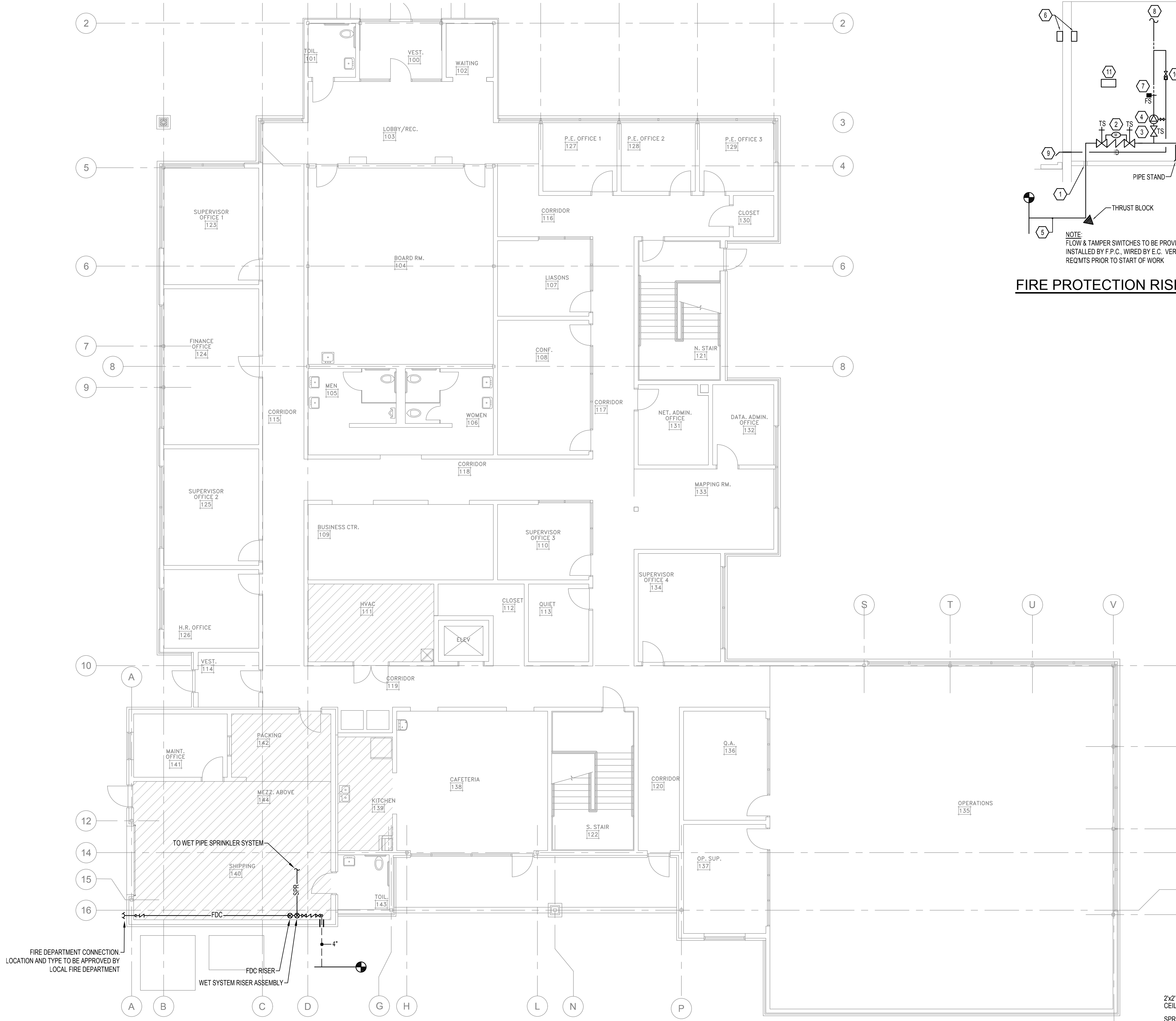
FIRE PROTECTION LEGEND

SPR	SPRINKLER PIPING (WET)
CA	SPRINKLER PIPING (CLEAN AGENT)
FDC	SPRINKLER PIPING (FIRE DEPT. CONNECTION)
TS	SHUT-OFF VALVE WITH TAMPER SWITCH
FS	SPRINKLER FLOW SWITCH
	FIRE DEPARTMENT CONNECTION
AFF	ABOVE FINISHED FLOOR
CTX	CONNECT TO EXISTING
EC	ELECTRICAL CONTRACTOR
ETR	EXISTING TO REMAIN
FHC	FIRE HOSE CABINET
FH	FIRE HYDRANT
FPC	FIRE PROTECTION CONTRACTOR
FP	FIRE PUMP
FS	FLOW SWITCH
GC	GENERAL CONTRACTOR
JP	JOCKEY PUMP
PC	PLUMBING CONTRACTOR
PV	POST INDICATOR VALVE
TS	TAMPER SWITCH
WV	WALL INDICATOR VALVE

 HATCHING INDICATES ORDINARY HAZARD OCCUPANCY. ALL OTHER AREAS ARE TO BE CONSIDERED LIGHT HAZARD OCCUPANCY U.N.O.

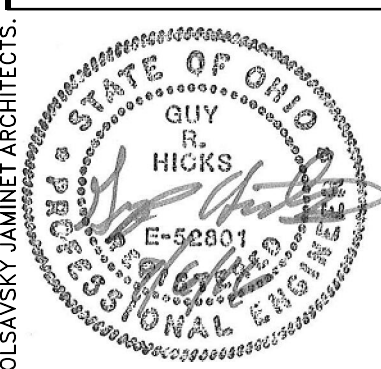


SPRINKLER HEAD LOCATION DETAIL
N.T.S.



1ST FLOOR FIRE PROTECTION PLAN
SCALE: 1/8"=1'-0"

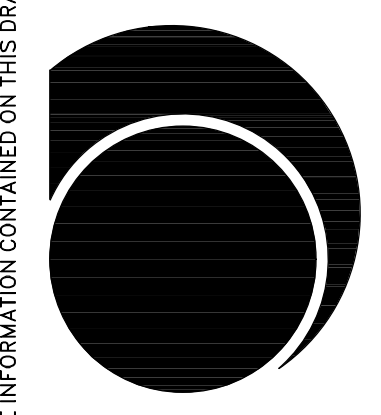
REVISION



114 EAST FRONT STREET
YOUNGSTOWN, OHIO
(330) 744-8981

OLSAVSKY JAMINET • ARCHITECTS

OHIO UTILITIES PROTECTION SERVICE - NEW OFFICE BUILDING
12467 MAHONING AVENUE
NORTH JACKSON, OHIO 44451
- BID PACKAGE B



PROJECT NO.	15-008
ISSUED	9-6-16
DRAWN	TBA

FP-2

TBA
Thorson Baker + Associates
CONSULTING ENGINEERS
3030 West Streetsboro Road
Richfield, Ohio 44286
(330) 659-6688 Ph.
(330) 659-6675 Fax

\\p:\project\2016\2016-08-16\15-008\15-008-FP2.dwg PLOT: 2016-08-16 11:04 AM, 11